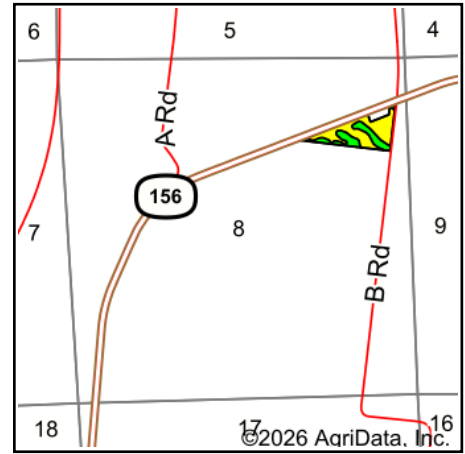
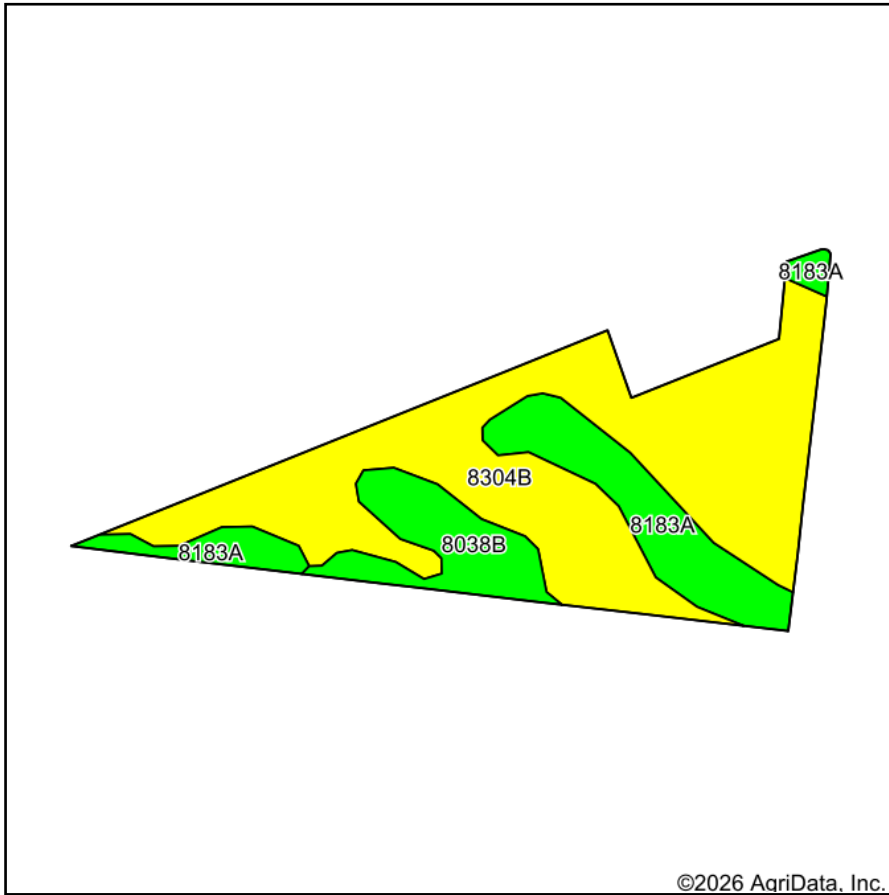


A1140_Tract1_Soils Map



State: **Illinois**
 County: **Monroe**
 Location: **8-3S-11W**
 Township: **Precinct 15**
 Acres: **11.46**
 Date: **3/4/2026**



Soils data provided by USDA and NRCS.

Area Symbol: IL133, Soil Area Version: 18

Code	Soil Description	Acres	Percent of field	Il. State Productivity Index Legend	Subsoil rooting a	Corn Bu/A	Soybeans Bu/A	Wheat Bu/A	Oats Bu/A b	Sorghum c Bu/A	Grass-legume e hay, T/A	Crop productivity index for optimum management
**8304B	Landes very fine sandy loam, 2 to 5 percent slopes, occasionally flooded	7.72	67.3%		FAV	**136	**45	**55	**62	0	**3.00	**101
**8183A	Shaffton clay loam, 0 to 2 percent slopes, occasionally flooded	2.38	20.8%		FAV	**153	**50	**59	**79	0	**5.00	**115
**8038B	Rocher loam, 2 to 5 percent slopes, occasionally flooded	1.36	11.9%		FAV	**149	**47	**57	**76	0	**4.00	**108
Weighted Average						141.1	46.3	56.1	67.2	*-	3.5	104.7

Table: Optimum Crop Productivity Ratings for Illinois Soil EFOTG are sourced from Bulletin 811 calculated Map Unit Base Yield Indices, and adjusted (Adj) for slope, erosion, flooding, and surface texture. Publication Date: 02-08-2023

Crop yields and productivity (B811 EFOTG) are maintained at the following USDA web site: 2023 Illinois Soil Productivity and Yield Indices: <https://efotg.sc.egov.usda.gov/#/state/IL/documents/section=2&folder=52809>

** Base indexes from Bulletin 811 adjusted for slope, erosion, flooding, and surface texture according to the Il. Soils EFOTG

b Soils in the southern region were not rated for oats and are shown with a zero "0".

c Soils in the northern region or in both regions were not rated for grain sorghum and are shown with a zero "0".

e Soils in the well drained group were not rated for grass-legume and are shown with a zero "0".