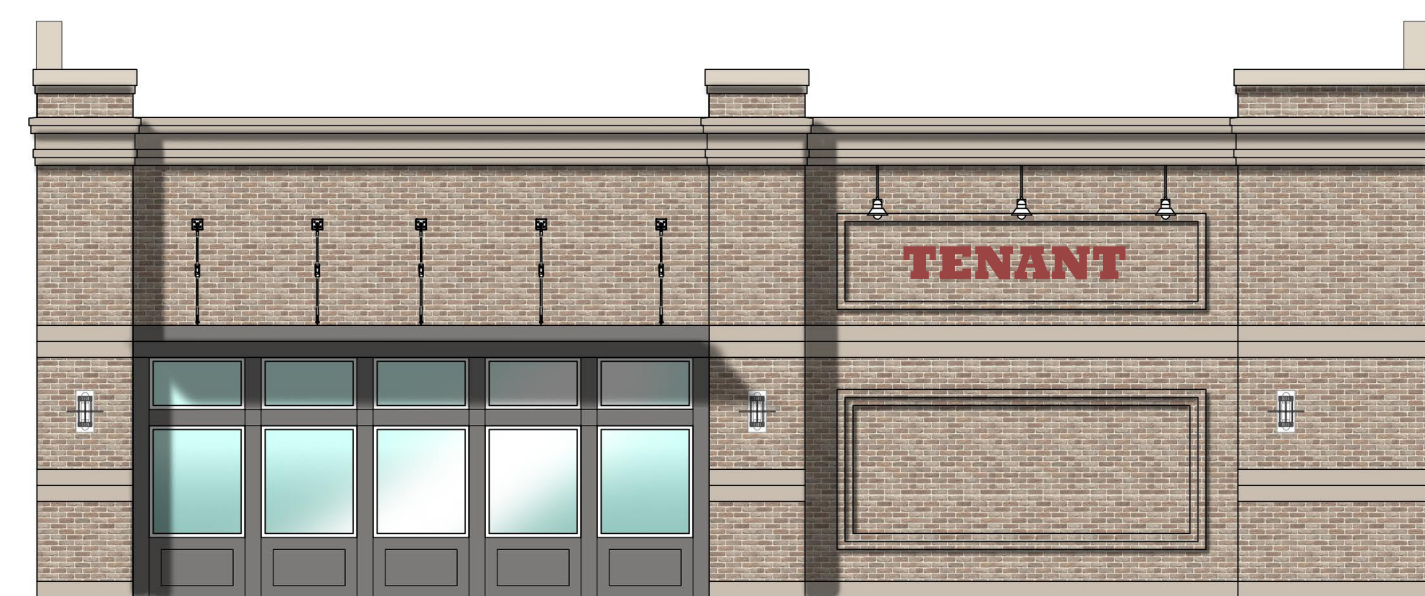
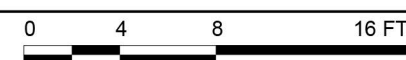




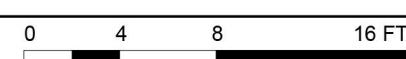
01 EXTERIOR ELEVATION SOUTH
SCALE: 1/8"=1'-0"



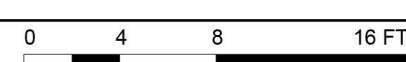
02 EXTERIOR ELEVATION NORTH
SCALE: 1/8"=1'-0"



03 EXTERIOR ELEVATION EAST
SCALE: 1/8"=1'-0"



04 EXTERIOR ELEVATION WEST
SCALE: 1/8"=1'-0"



EXTERIOR FINISH MATERIAL RATIO					
MATERIAL	NORTH	SOUTH	EAST	WEST	TOTAL
MASONRY	1916 SF (81%)	1805 SF (78%)	909 SF (84%)	1273 SF (86%)	5903 SF (82%)
METAL/WOOD	439 SF (19%)	507 SF (22%)	170 SF (16%)	207 SF (14%)	1323 SF (18%)



NTKAD LLC
ntkadev@gmail.com
469-546-5986

CELINA STATION RETAILS
BUILDING 8

SWC OF ASH ST & PRESTON RD
STATE HWY #289, CELINA, TEXAS

MARK	DATE	DESCRIPTION
	8/5/22	SITE PLAN REVIEW

PROJECT NO:	22014
DRAWN BY: -	YH
SHEET NO:	A201