

22630 Haggerty Rd

Farmington Hills, MI

SUITE 150: 24,800 SF PLUG & PLAY OFFICE/FLEX SPACE



Contact Us

Andrew Baines

First Vice President

+1 248 351 2010

andrew.baines@cbre.com

24,800 SF AVAILABLE

22630 Haggerty Rd Farmington Hills, MI

For Sublease

Property Features

24,800 SF

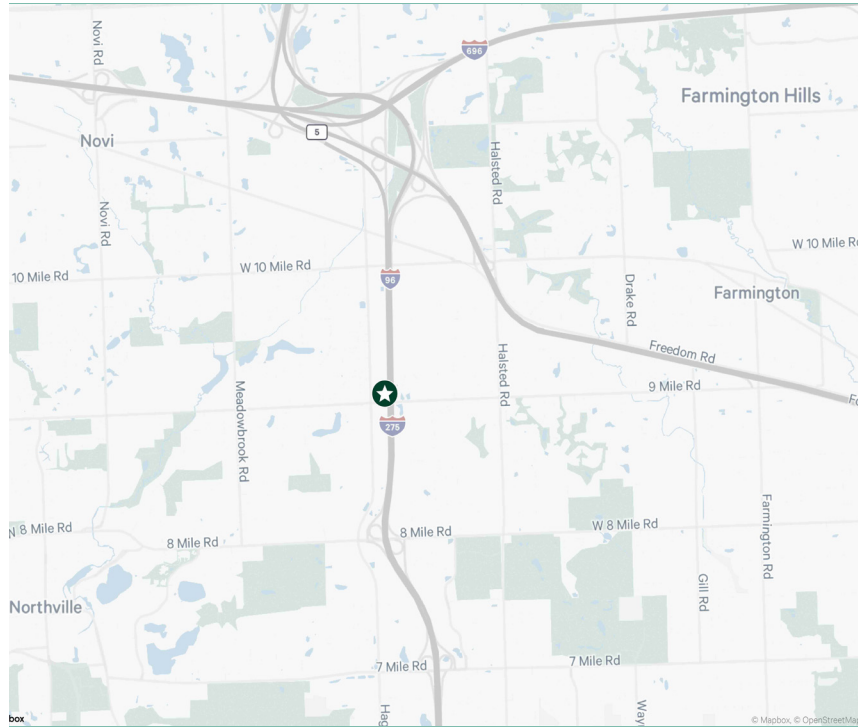
Suite 150

Negotiable

Sublease Asking Rate

November 30, 2029

Lease Expiration Date



| | | | |
|----------------------|--|--------------------------|----------------------------------|
| Building Size | 24,800 SF 2,168 SF Warehouse Area | Parking | +/- 75 Spaces |
| Availability | Immediate | Grade Level Doors | Three (3) Total 12' w x 14' h |
| Power | 480V 3-Phase 120V Single Phase Transformers | Year Built | 2000 |
| Zoning | B1 | Ceiling Height | 10' |
| Furniture | Negotiable | Signage | Signage Possible |

Comments

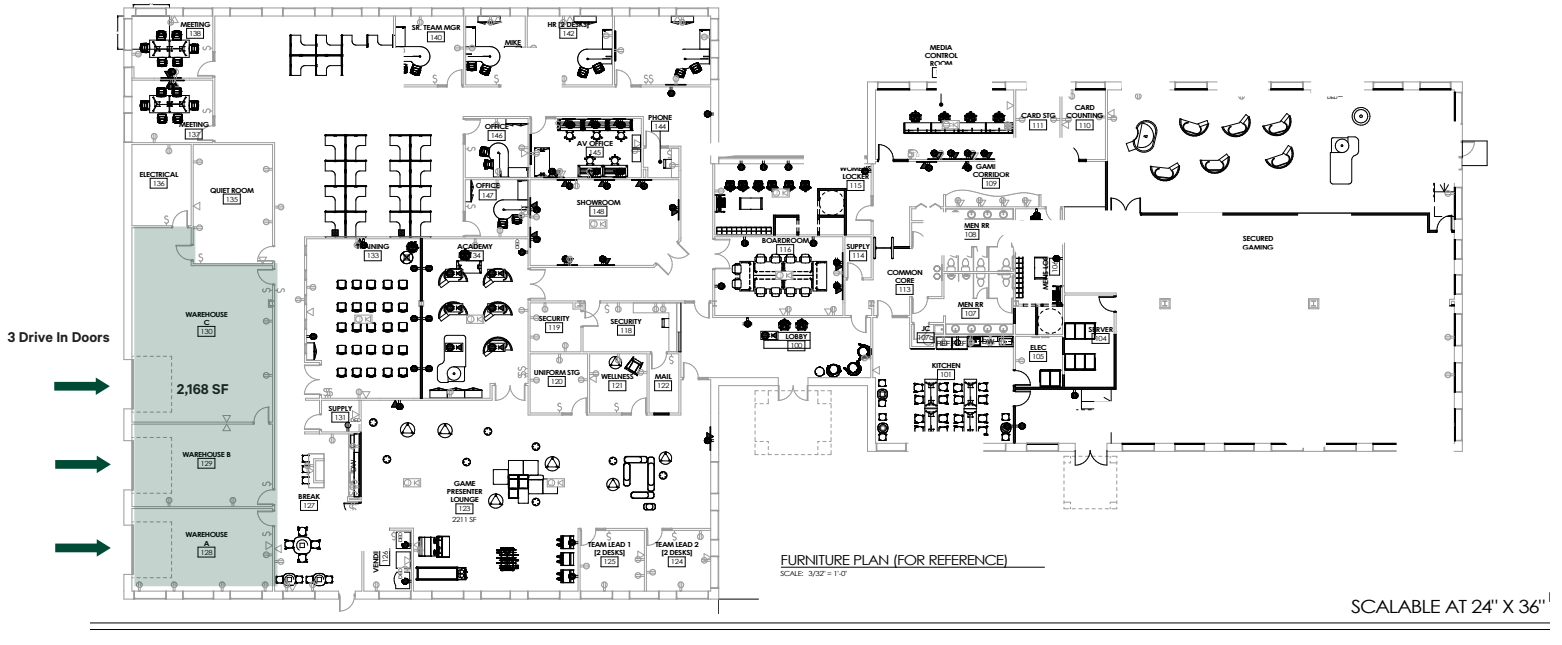
- Located on north-south Haggerty Road between 9 Mile and 10 Mile Road in Farmington Hills
- Lease term through November 30, 2029
- Back up power with UPS on site
- Signage possible
- Divisible

24,800 SF AVAILABLE

22630 Haggerty Rd Farmington Hills, MI

For Sublease

Floor Plan

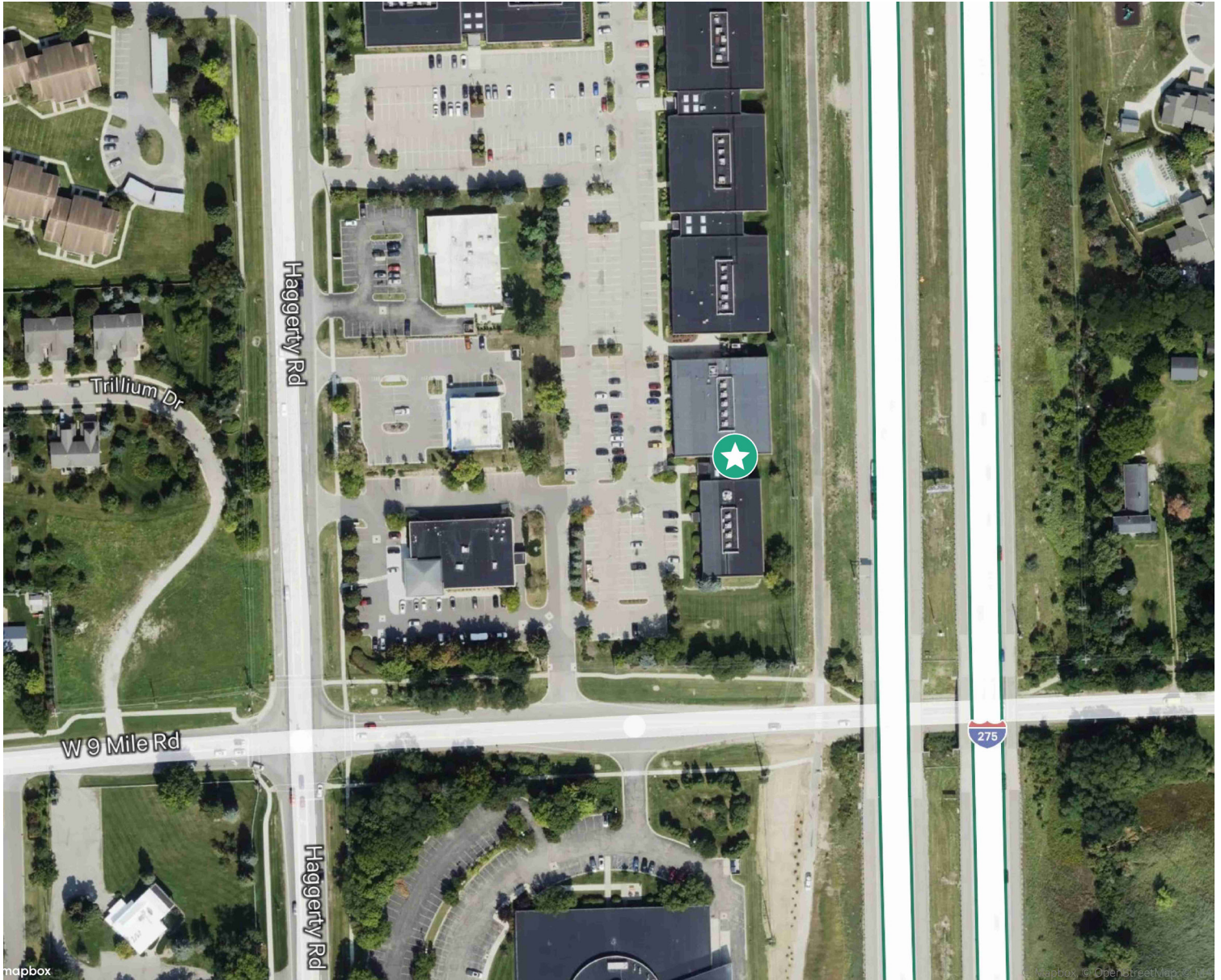


24,800 SF AVAILABLE

22630 Haggerty Rd Farmington Hills, MI

For Sublease

Area Map



Contact Us

Andrew Baines

First Vice President

+1 248 351 2010

andrew.baines@cbre.com

© 2026 CBRE, Inc. All rights reserved. This information has been obtained from sources believed reliable, but has not been verified for accuracy or completeness. You should conduct a careful, independent investigation of the property and verify all information. Any reliance on this information is solely at your own risk. CBRE and the CBRE logo are service marks of CBRE, Inc. All other marks displayed on this document are the property of their respective owners, and the use of such logos does not imply any affiliation with or endorsement of CBRE. Photos herein are the property of their respective owners. Use of these images without the express written consent of the owner is prohibited.