

FOR SUBLEASE

# 660 SOUTH SANTA FE AVE

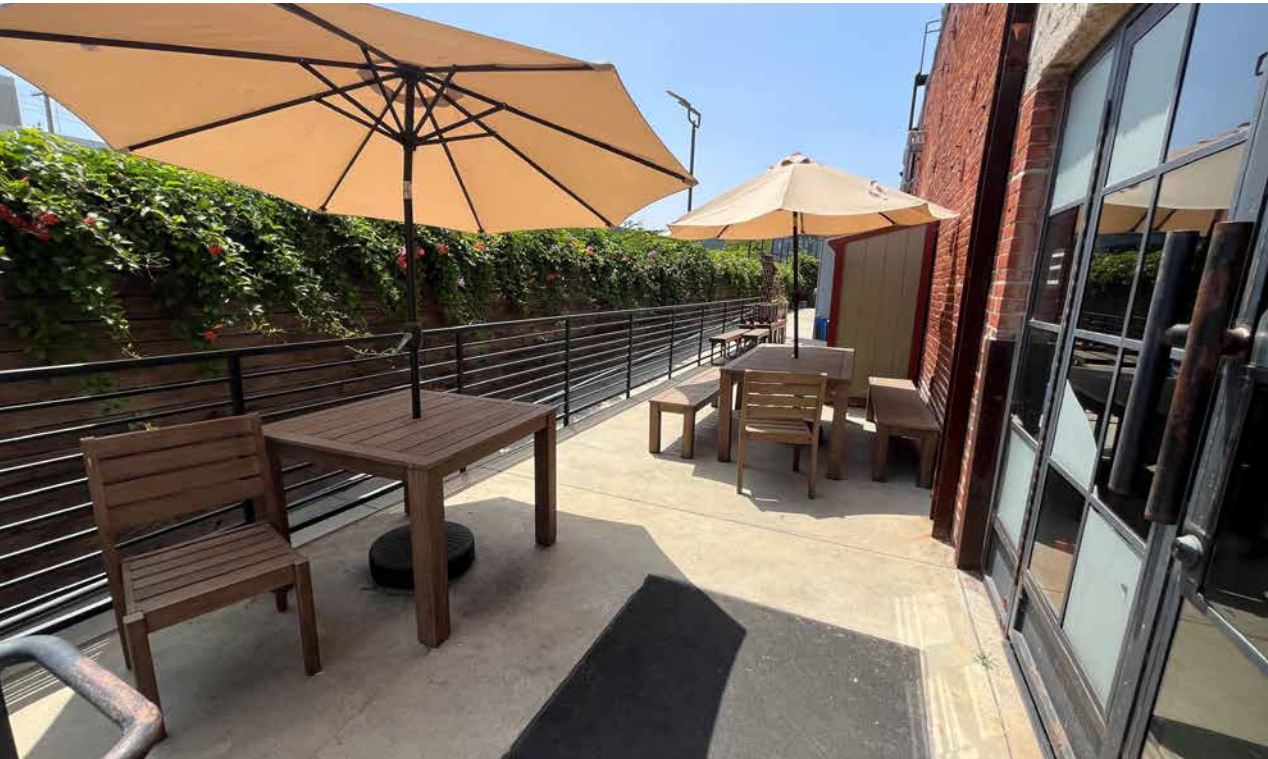
*4,890 SF Creative Office Space  
Available for Sublease*

LOS ANGELES, CA 90021



KIDDER.COM

**km** Kidder  
Mathews



*Creative office sublease ideally located within walking distance of dining, retail, and cultural amenities in the Arts District*

Furniture, fixtures and equipment is negotiable

4 private offices, conference room, show rooms, and work stations

Open kitchen area

Private patio

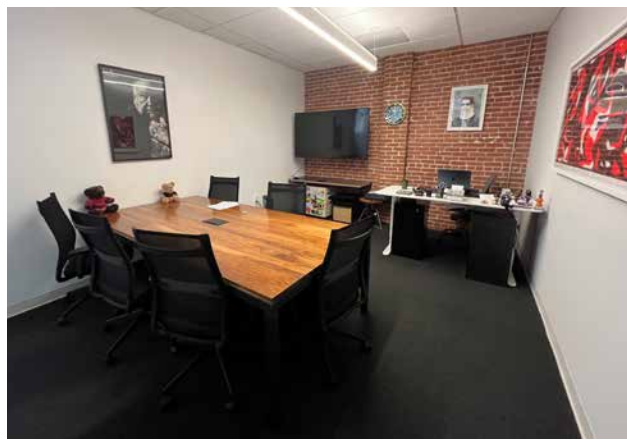
20 gated parking spaces

**4,890 SF**

AVAILABLE

**\$3.00 MG**

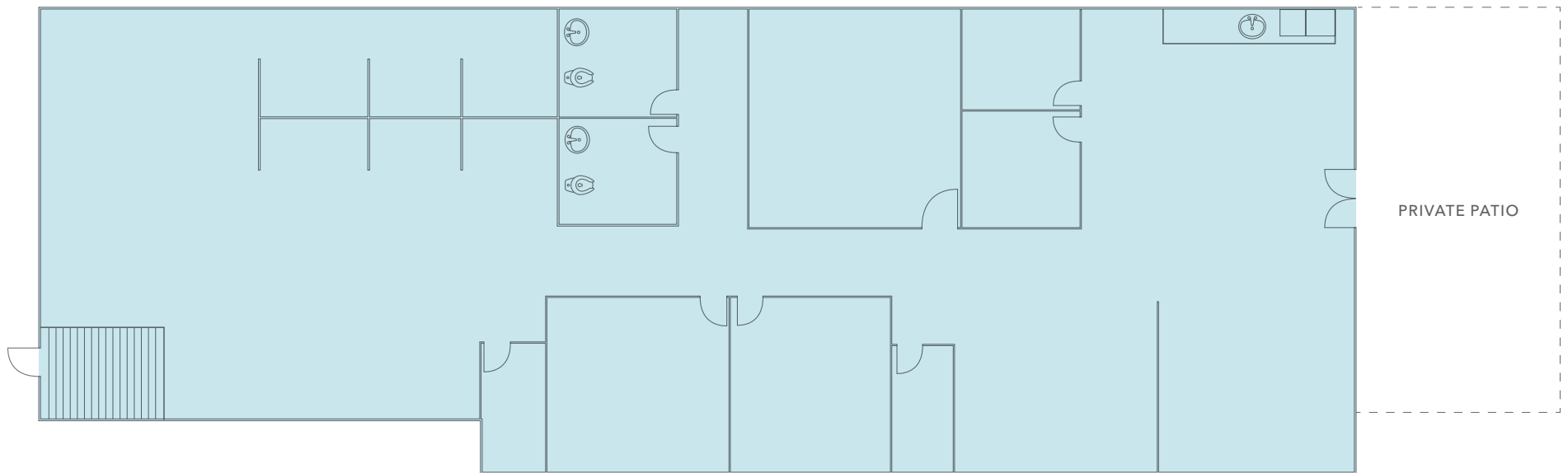
LEASE RATE (PER MONTH)





# FLOOR PLAN

GATED PARKING



Floor plan not to scale and for illustrative purposes only

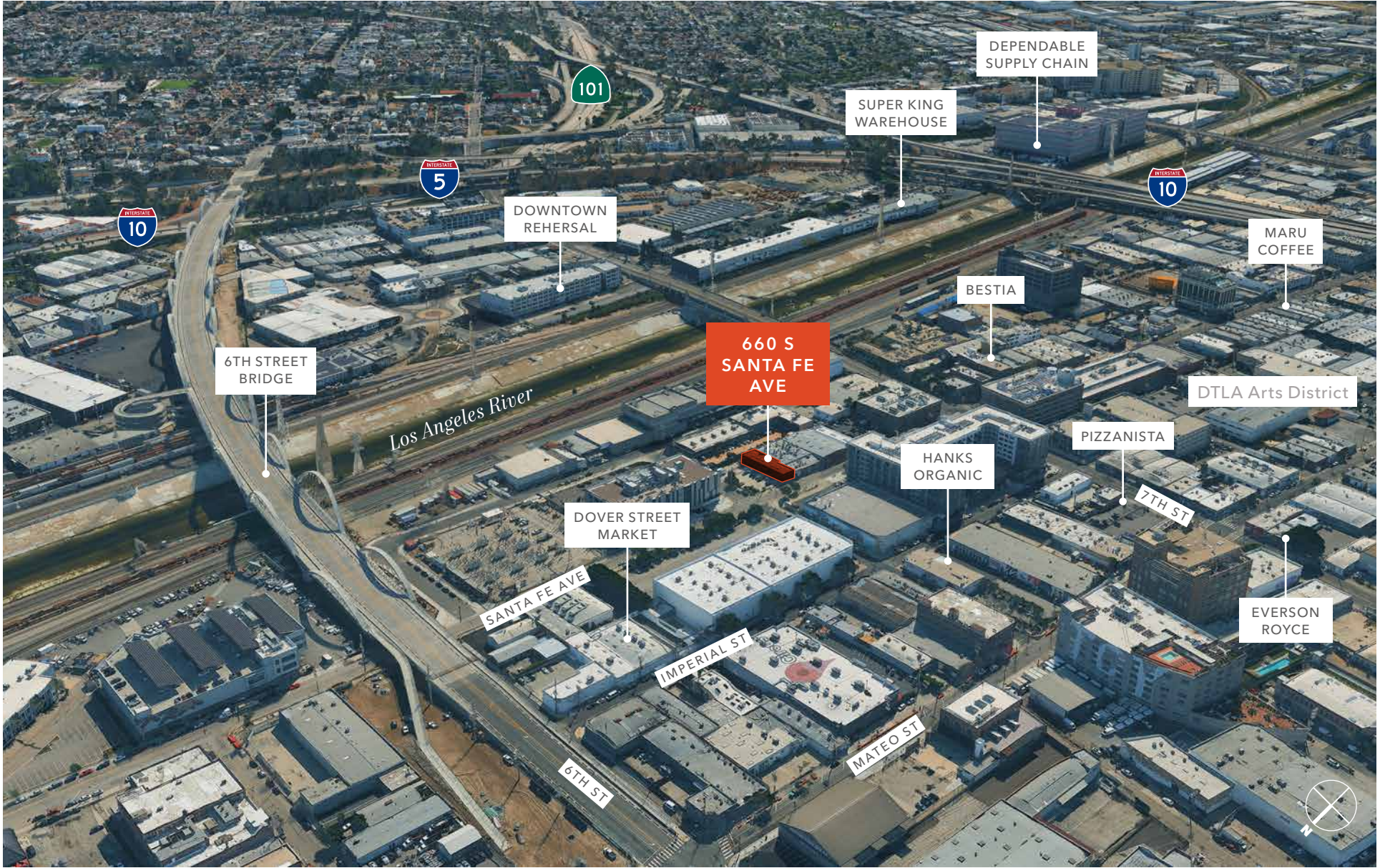
**4,890SF**

AVAILABLE

**\$3.00 MG**

LEASE RATE (PER MONTH)

660 SOUTH SANTA FE AVE





## 660 SOUTH SANTA FE AVE

*For more information,  
please contact*

ALDO BOTTALLA  
213.225.7243  
aldo.bottalla@kidder.com  
LIC N° 02014685

KIDDER.COM

This information supplied herein is from sources we deem reliable. It is provided without any representation, warranty, or guarantee, expressed or implied as to its accuracy. Prospective Buyer or Tenant should conduct an independent investigation and verification of all matters deemed to be material, including, but not limited to, statements of income and expenses. Consult your attorney, accountant, or other professional advisor. All Kidder Mathews designs are the sole property of Kidder Mathews. Branded materials and layouts are not authorized for use by any other firm or person.

