

Industrial Land Development Opportunity

South Rickenbacker

10650 & 10704 Lockbourne-Eastern Rd
Ashville, OH (Columbus)

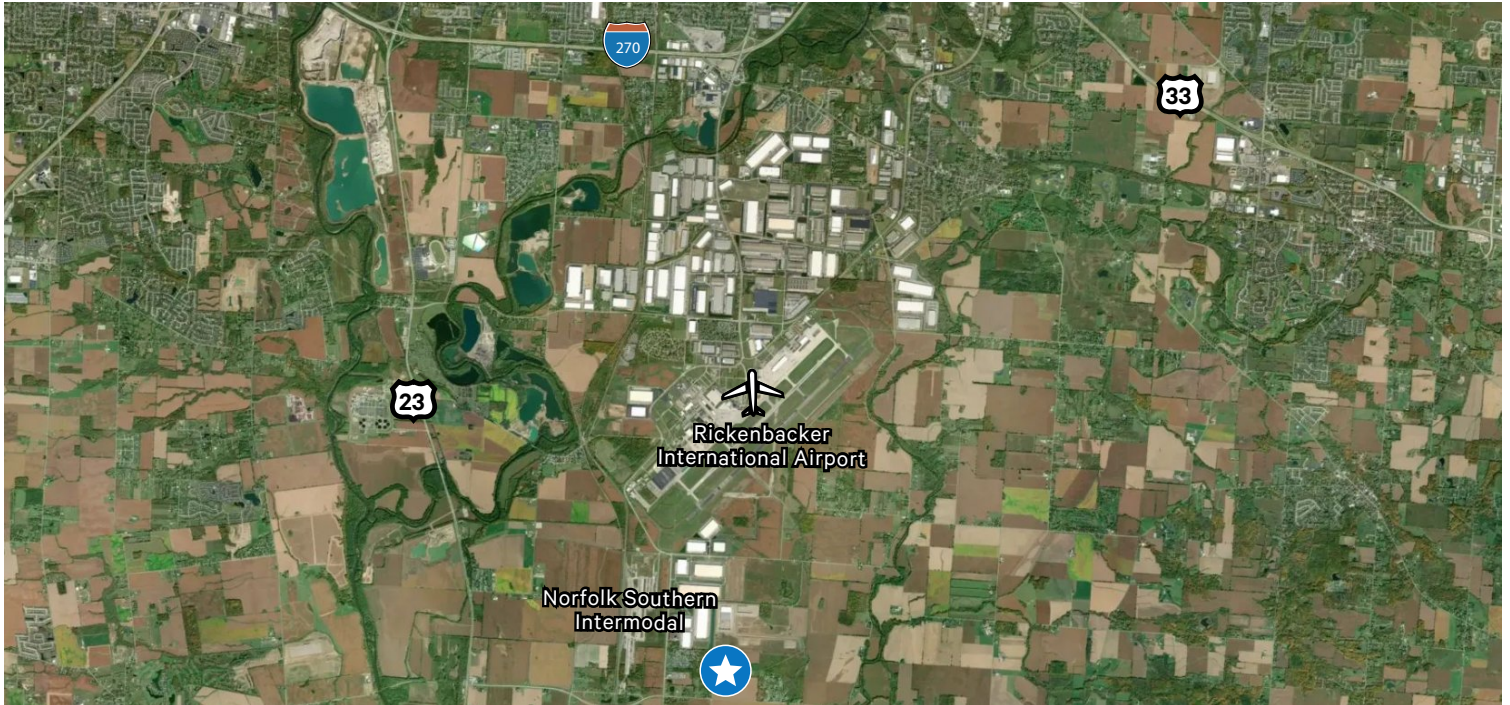


Property Overview

- + Size: 44.36 AC - expandable up to 160± acres
- + Municipality: Madison Township, Pickaway County; Property will need to be annexed into the Northern Pickaway County Joint Economic Development
- + Price: Negotiable
- + Zoning: RBD, Rickenbacker Business District
- + Tax Incentives: Up to 100% real property tax abatement for up to 15 years possible

Utilities

- + 12" Earnhart Hill Water and Sewer District water line nearby
- + 15" City of Columbus Sanitary Sewer Line on Lockbourne-Eastern Road
- + Columbia Gas
- + South Central Power
- + Spectrum internet



Access



Highway:

- 3± miles to US 23
- 8± miles to I-270
- 12± miles to I-71
- 13± miles to I-70



Airport:

- 2± miles to Rickenbacker International Airport (LCK) - Air cargo
- 22± miles to John Glenn International Airport (CMH) - Passenger



Rail:

- 1± mile to Norfolk Southern Intermodal

Contact Us

Rick Trott

Executive Vice President

+1 614 430 5091

rick.trott@cbre.com

Shelby Gumpf

First Vice President

+1 614 430 5041

shelby.gumpf@cbre.com

© 2023 CBRE, Inc. All rights reserved. This information has been obtained from sources believed reliable, but has not been verified for accuracy or completeness. You should conduct a careful, independent investigation of the property and verify all information. Any reliance on this information is solely at your own risk. CBRE and the CBRE logo are service marks of CBRE, Inc. All other marks displayed on this document are the property of their respective owners, and the use of such logos does not imply any affiliation with or endorsement of CBRE. Photos herein are the property of their respective owners. Use of these images without the express written consent of the owner is prohibited.