

10027-150
Park Cedar Drive

Charlotte, NC
28210

OFFICE CONDO
FOR SALE



\$345 PSF For Sale

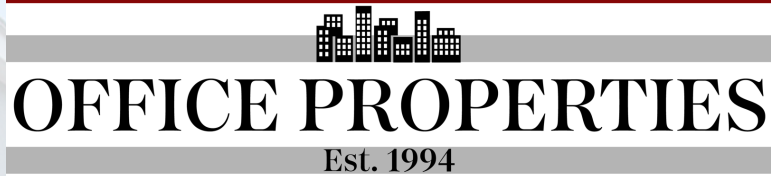
ABOUT PROPERTY

- Convenient south Charlotte location off Highway 51.
- Well designed space with spacious layout.
- Ample parking throughout the day.

PROPERTY DETAILS

- 1,606 SF For Sale at \$345 PSF.
- Leased at \$31,708.38 per year until August 31, 2027.
- Condo dues are \$2.65 PSF per year. Owner says no pending assessments and good reserves by condo association.

**10027-150 Park Cedar Dr
Charlotte, NC 28210**

**OFFICE PROPERTIES**
Est. 1994

PROPERTY CONTACTS:

John Stipp
John@CharlotteOfficeSpace.com
704-540-1260

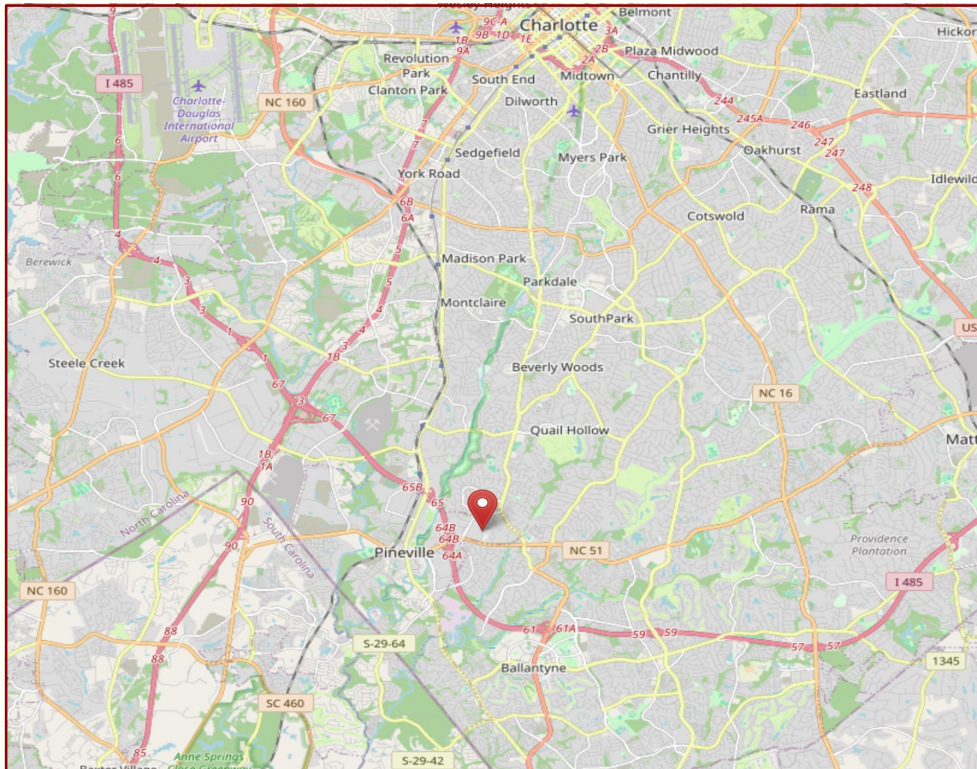
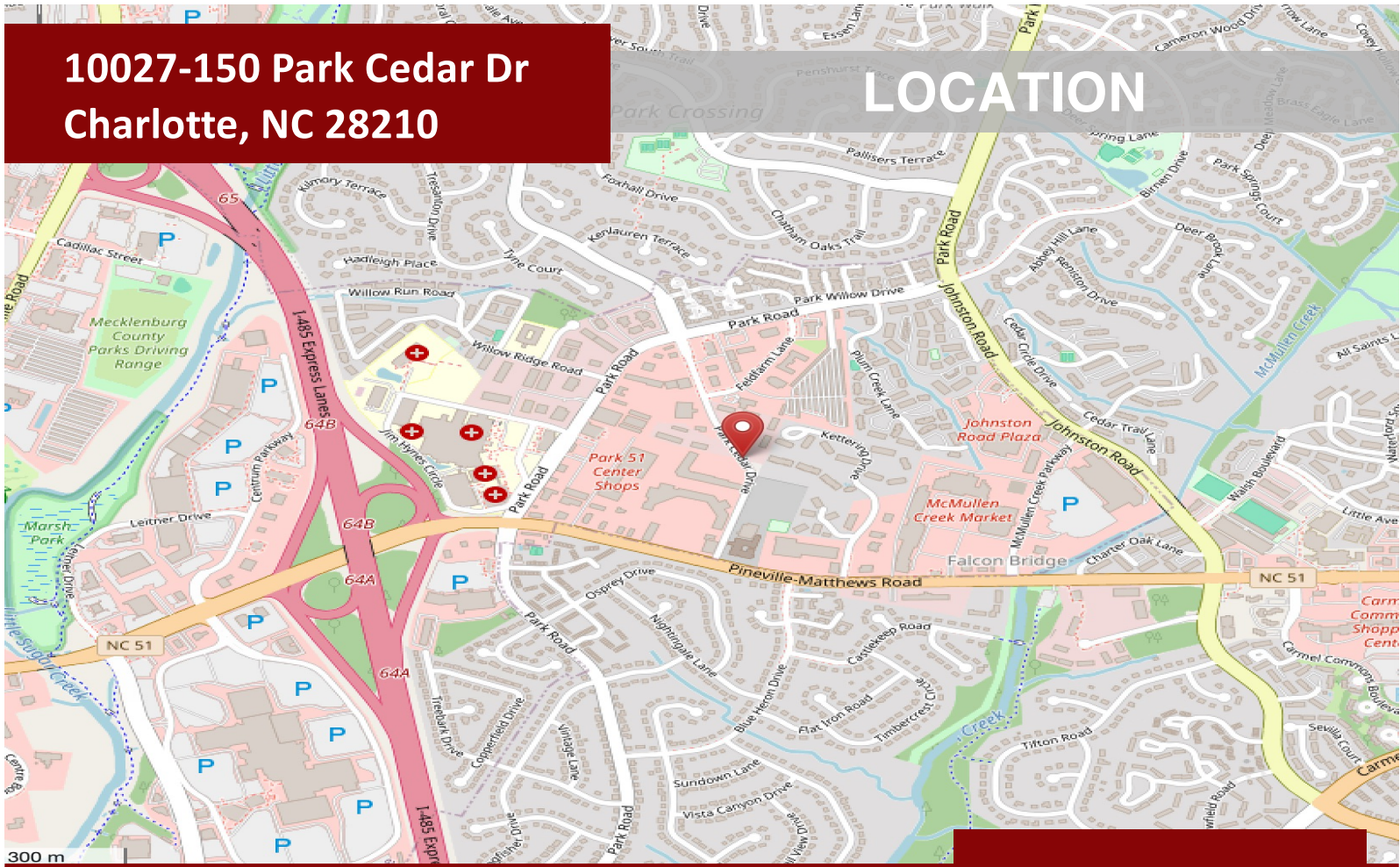
Jackson Stipp
Jackson@CharlotteOfficeSpace.com
704-907-5074

CHARLOTTEOFFICESPACE.COM
8508-124 Park Rd, Charlotte, NC 28210

The information contained herein has been obtained from sources deemed reliable, but we make no guarantees, warranties, or representations as to the completeness or accuracy thereof.

**10027-150 Park Cedar Dr
Charlotte, NC 28210**

LOCATION



© OpenStreetMap contributors



**Located off Highway
51 in South Charlotte**



**YEAR BUILT
1998**



Proximity to I-485




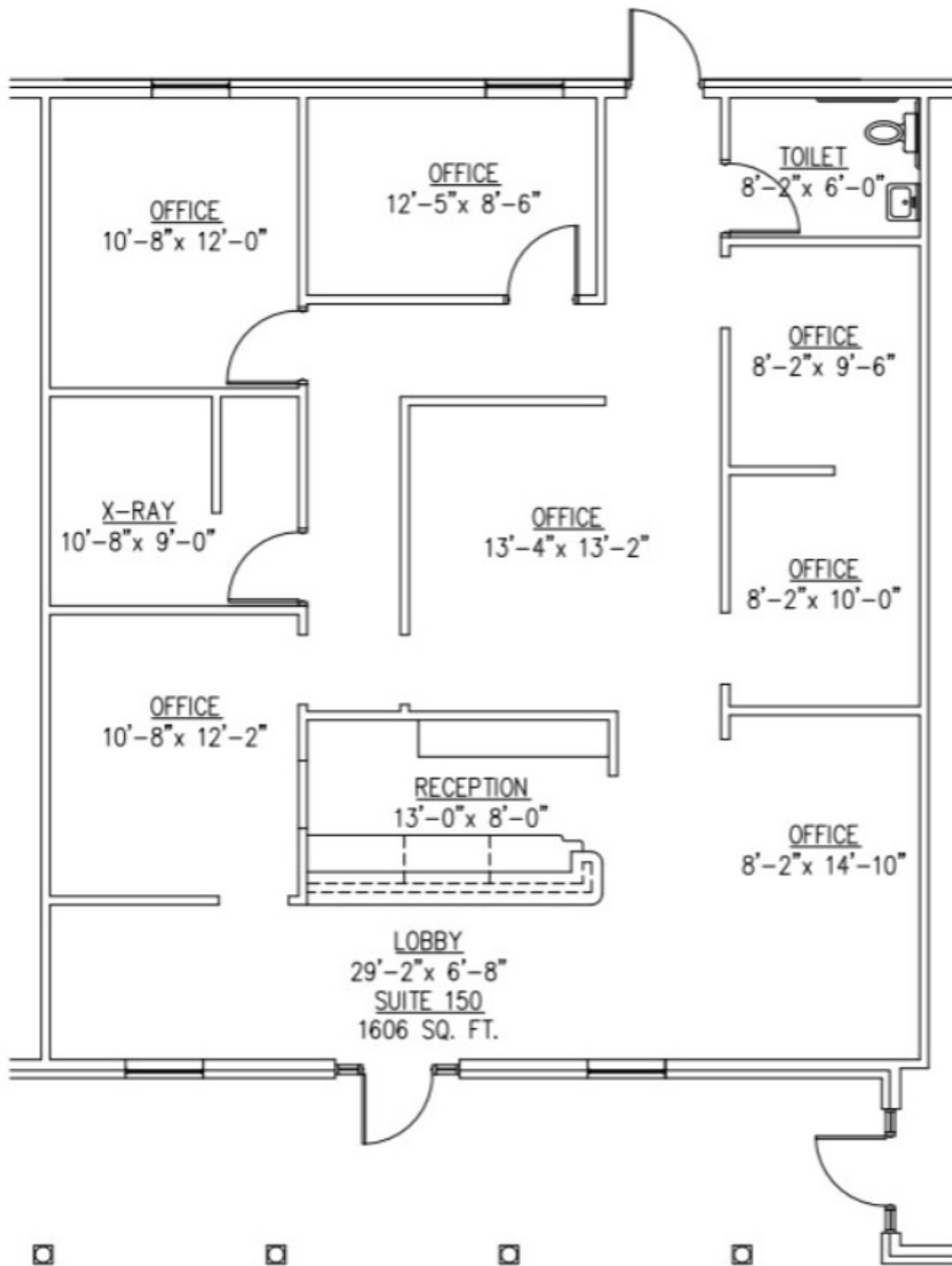
**AVAILABLE SF
1606**

10027-150 Park Cedar Dr
Charlotte, NC 28210

INTERIOR PHOTOS




OFFICE PROPERTIES
Est. 1994



SUITE 150 FLOOR PLAN

SCALE: $\frac{1}{8}" = 1'-0"$