

# Steilacoom Center

Professional Office Space

210 Wilkes St  
Steilacoom, WA 98388  
[www.cbre.com/tacoma](http://www.cbre.com/tacoma)



## Steilacoom Center

210 Wilkes St, Steilacoom WA 98388



# Steilacoom Center

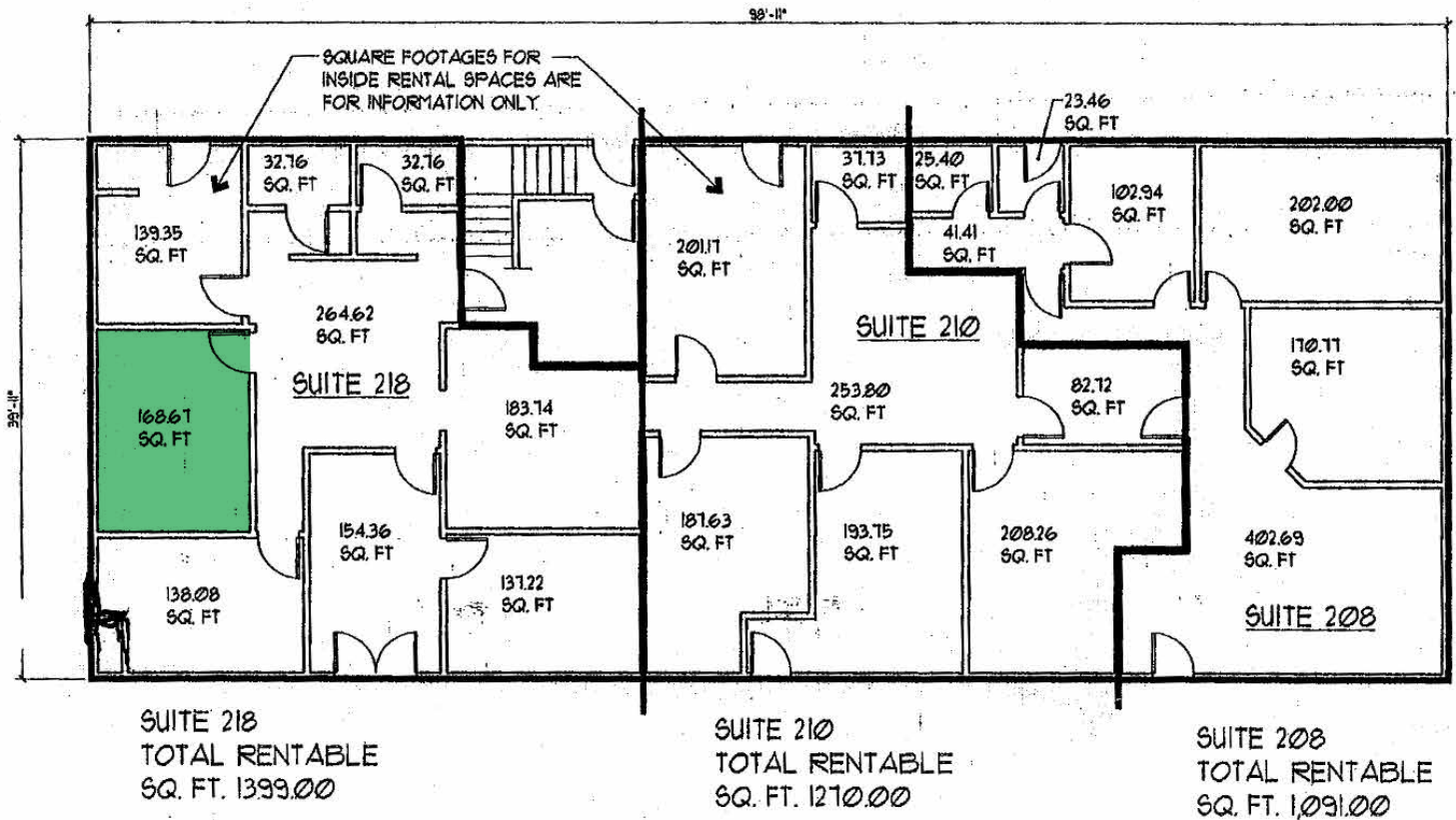
## Property Details

Professional office space, located in the heart of historic Steilacoom, located next to the United States Post Office. Within walking distance to Anderson Island Ferry, farmers market, restaurants, and Pioneer Orchard Park- featuring breathtaking views of the bay.

- + Available February 1, 2026
- + Available Space
  - Space 4-7, 168.67 SF

- + Zoning
  - General Commercial, City of Steilacoom
- + Asking Rate: \$700/month, Gross

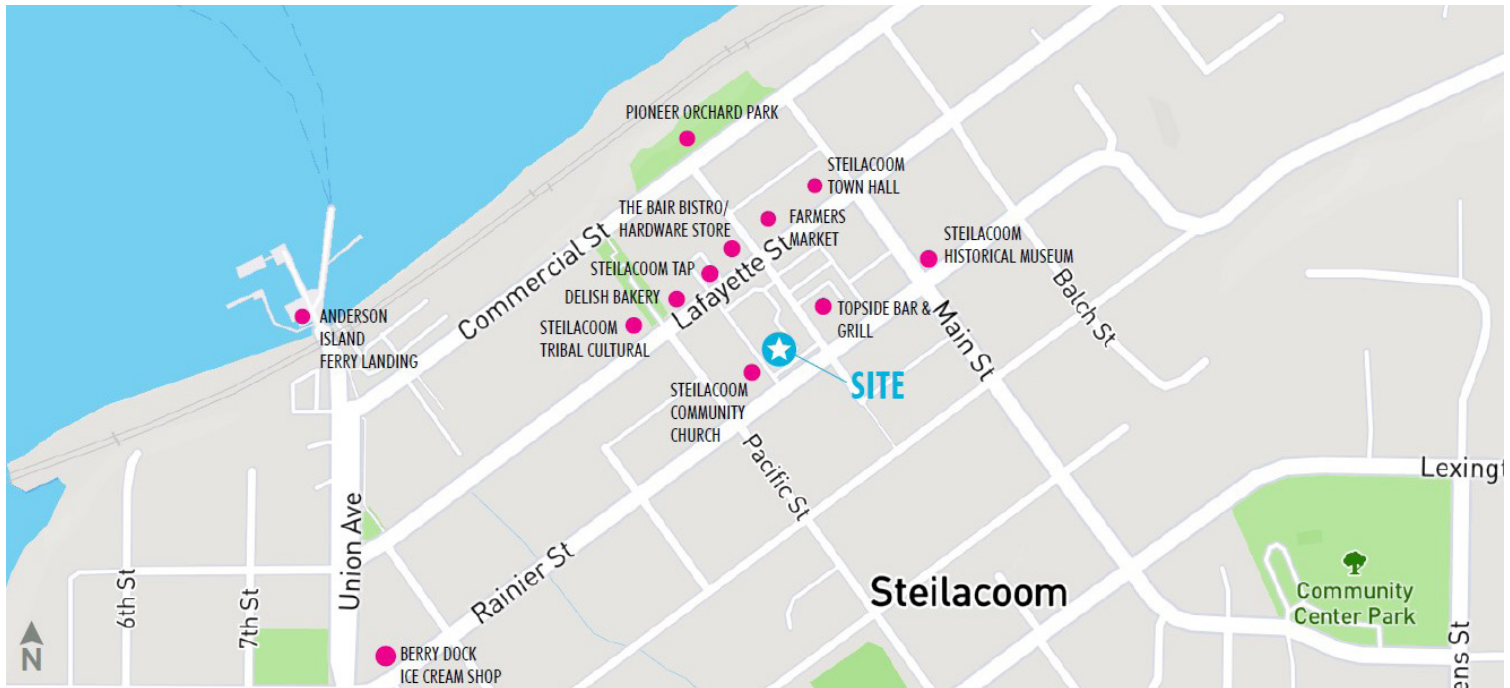
# Floor Plans



# Steilacoom Center

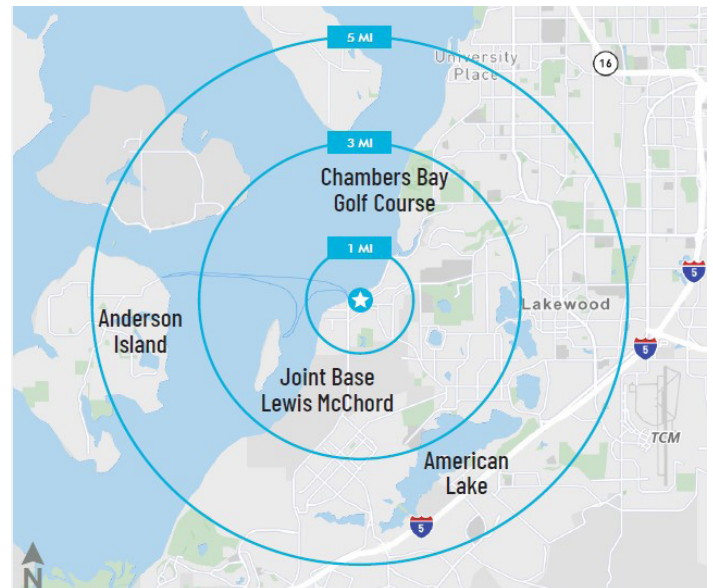
210 Wilkes St, Steilacoom WA 98388

# For Lease



Demographics	1 Mile	3 Miles	5 Miles
Population	6,365	36,769	116,722
Average Household Income	\$140,489	\$121,371	\$116,564
Daytime Population	5,049	29,099	123,451

Source: ESRI 2025



## Contact Us

**Leon Titus**  
Associate  
+1 253 596 0042  
leon.titus@cbre.com

**CBRE, Inc.**  
710 Market Street  
Tacoma, WA 98402

© 2026 CBRE, Inc. All rights reserved. This information has been obtained from sources believed reliable, but has not been verified for accuracy or completeness. You should conduct a careful, independent investigation of the property and verify all information. Any reliance on this information is solely at your own risk. CBRE and the CBRE logo are service marks of CBRE, Inc. All other marks displayed on this document are the property of their respective owners, and the use of such logos does not imply any affiliation with or endorsement of CBRE. Photos herein are the property of their respective owners. Use of these images without the express written consent of the owner is prohibited.