



4390 BELLE OAKS DRIVE

FOR LEASE: 2,500 - 82,061 SF
CHARLESTON, SC 29405



CBRE

Class A Office Space

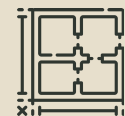
4390 Belle Oaks Drive—a 102,874-SF four-story Class A office building—is located in the Executive Park at Faber Place. With convenient interstate access to I-526, the property is a short drive to dining and retail options in North Charleston or West Ashley. The property features efficient layouts, 14' slab-to-slab ceiling heights, ample parking, and on-site maintenance.



Full-Floor Availability



82,061 SF
Available



**2,500-
26,600 SF**
Suites



\$27.00 PSF
Full Service
Gross

ENTIRE 4TH
3,620 - 26,586 SF

ENTIRE 3RD
3,955 - 26,604 SF

PARTIAL 2ND
3,376 - 14,537 SF

PARTIAL 1ST
4,521 - 14,334 SF

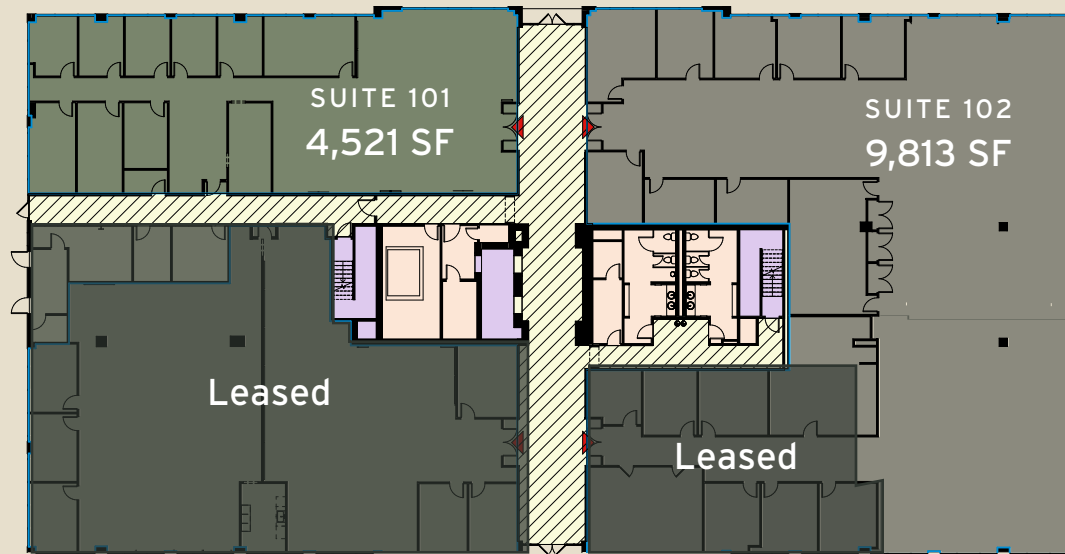


Interstate Facing
Signage Opportunity

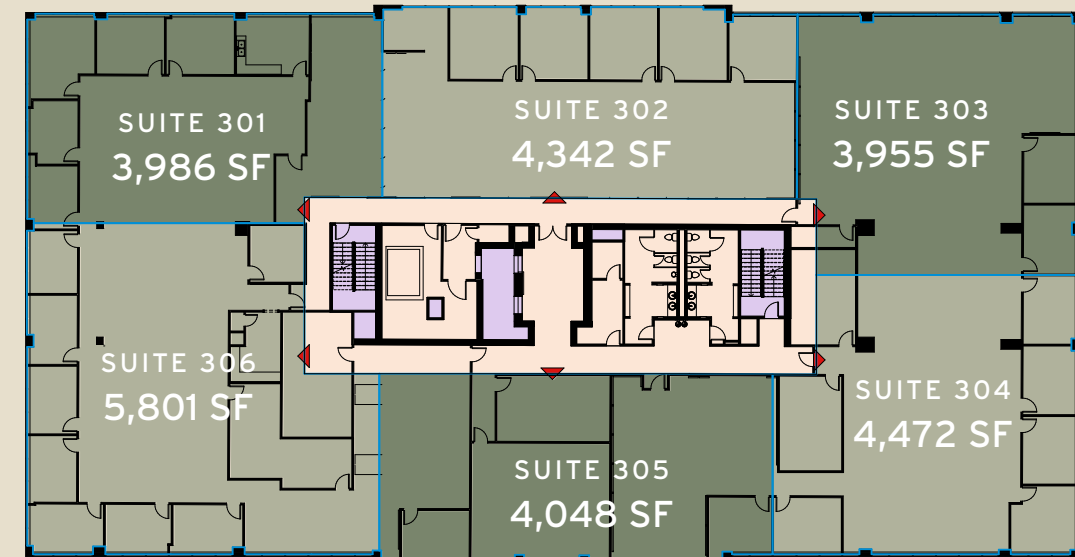
Suites for Lease

Suites for Lease

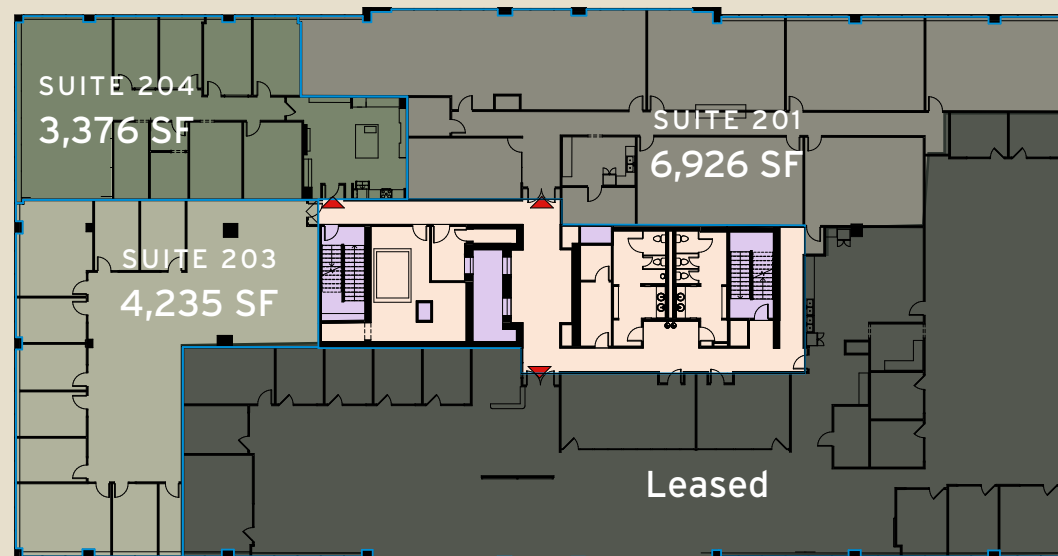
PARTIAL 1ST FLOOR



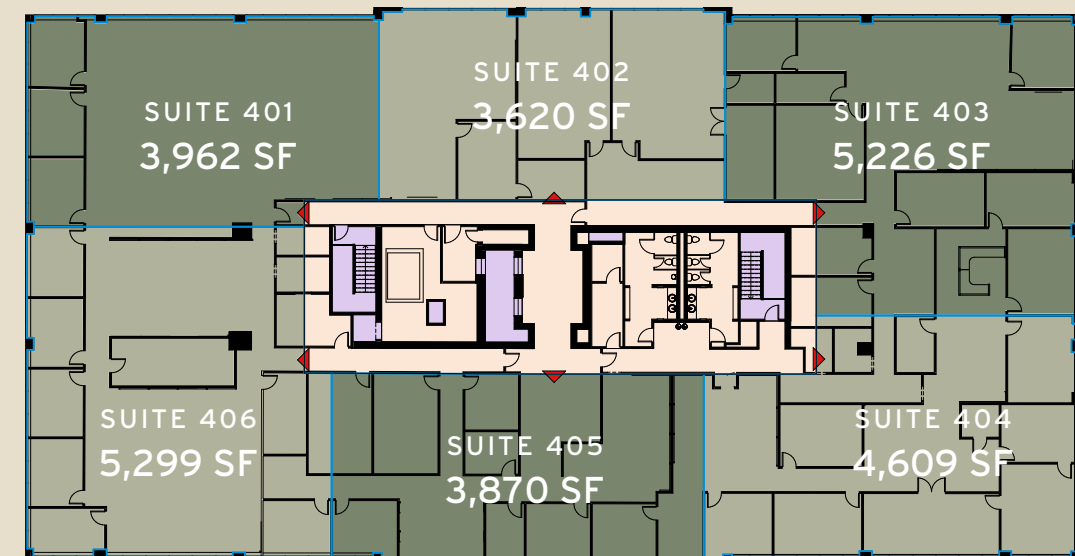
ENTIRE 3RD FLOOR



PARTIAL 2ND FLOOR



ENTIRE 4TH FLOOR



Nearby Places of Interest



Area Amenities

- FOOD & BEVERAGE
- RETAIL
- HOTELS



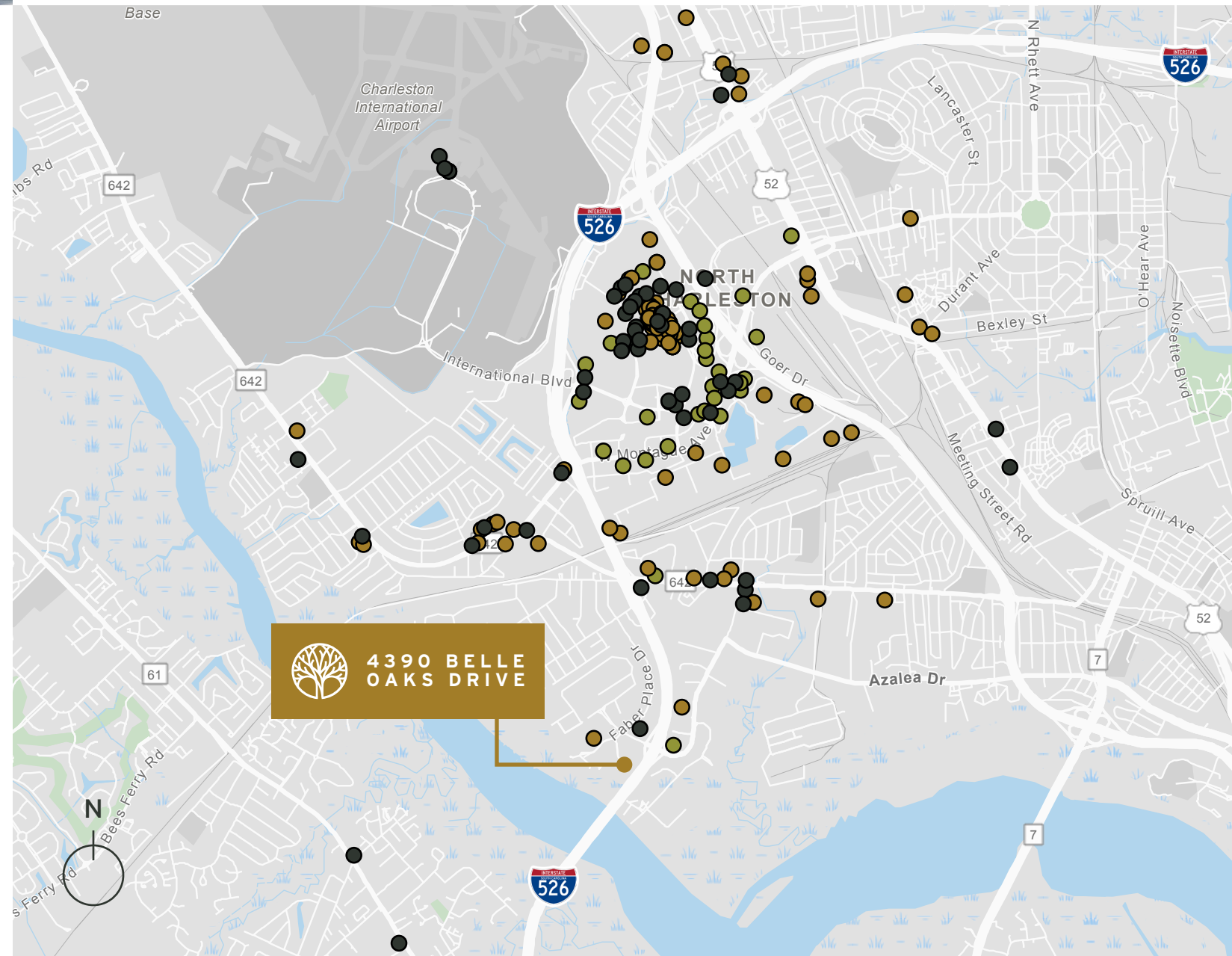
Charleston Int'l Airport



West Ashley, Charleston



Downtown Charleston



I-526

Excellent visibility from
Mark Clark Expressway/I-526



4390 BELLE
OAKS DRIVE

Charles Carmody

Senior Vice President
+1 843 577 1155
charles.carmody@cbre.com

Ryan Carmody

Senior Associate
+1 843 577 1162
ryan.carmody@cbre.com

CBRE



© 2025 CBRE, Inc. This information has been obtained from sources believed reliable. We have not verified it and make no guarantee, warranty or representation about it. Any projections, opinions, assumptions or estimates used are for example only and do not represent the current or future performance of the property. You and your advisors should conduct a careful, independent investigation of the property to determine to your satisfaction the suitability of the property for your needs.

CBRE and the CBRE logo are service marks of CBRE, Inc. and/or its affiliated or related companies in the United States and other countries. All other marks displayed on this document are the property of their respective owners.