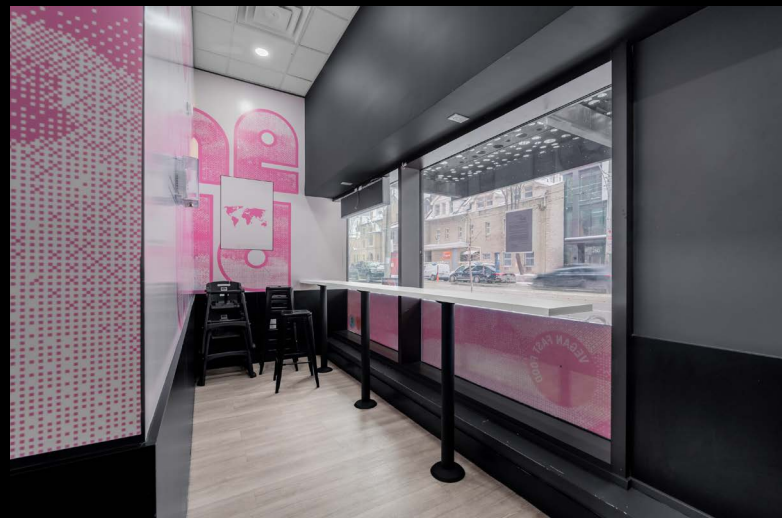


PRIME RETAIL FOR LEASE

215 CHURCH

Located on the Ground Level of Social Condos at Church & Dundas St E



CBRE urban retail team

PRIME RETAIL FOR LEASE

215 CHURCH

Address: 215 Church Street, Toronto

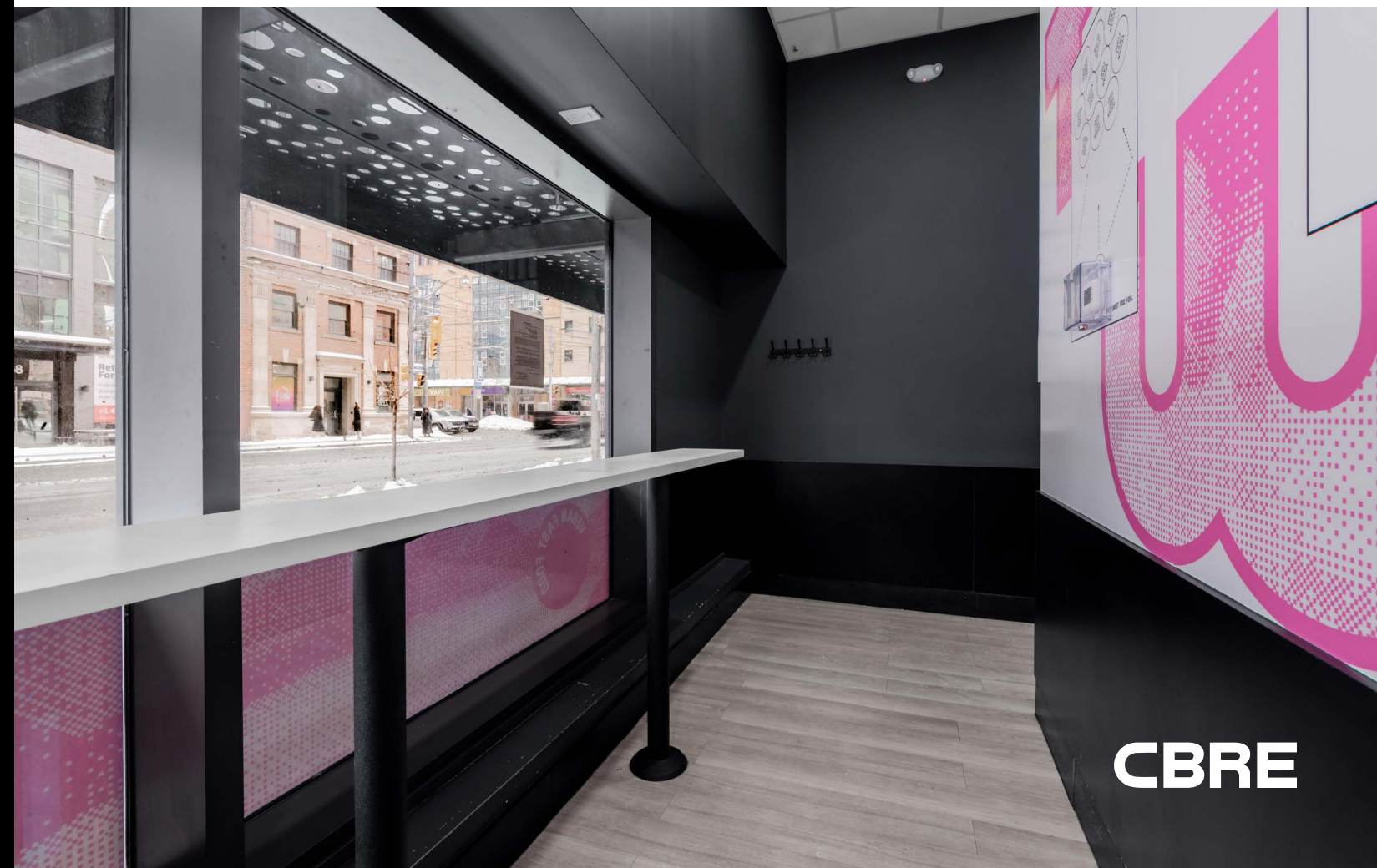
Size: 1,110 sq. ft.

Net Rent: \$75.00 per sq. ft.

TMI: \$22.29 per sq. ft.

Available: Immediately

- Prime retail located on the ground level of Social Condos, a 598 unit condominium building
- Located steps from Yonge-Dundas Square and the Toronto Eaton Centre, two of Toronto's top tourist attractions
- Excellent neighbouring tenants including Krispy Kreme, Tahini's, INS Market, Egg Club and many more
- Benefits from it's proximity to Toronto Metropolitan University
- Within a 3-minute walk to Dundas subway station and directly on the 505 streetcar line
- Ideal for a food use

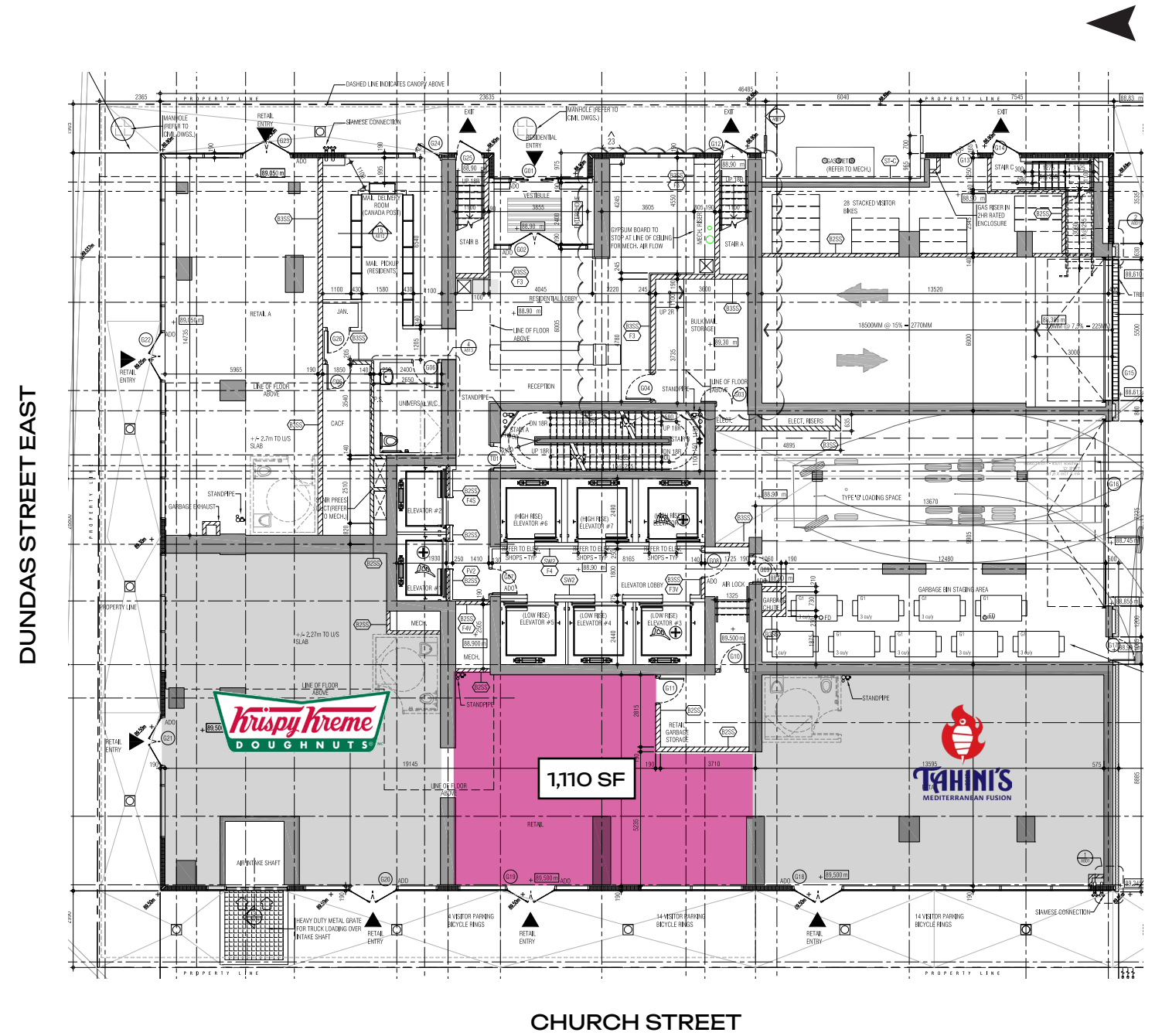


CBRE

INTERIOR IMAGES



FLOOR PLAN



DUNDAS STREET EAST

CHURCH STREET

LOCATION MAP

FINANCIAL CORE

ST. LAWRENCE MARKET

BERCZY PARK

TORONTO CITY HALL

MASSEY HALL

EATON CENTRE

ST. MICHAEL'S HOSPITAL

YONGE-DUNDAS SQUARE

PRIME RETAIL FOR LEASE
215 CHURCH

TORONTO METROPOLITAN UNIVERSITY

QUEEN STREET EAST

JARVIS STREET

SHUTER STREET

YONGE STREET

DUKAS STREET

CHURCH STREET



PRIME RETAIL FOR LEASE

215 CHURCH

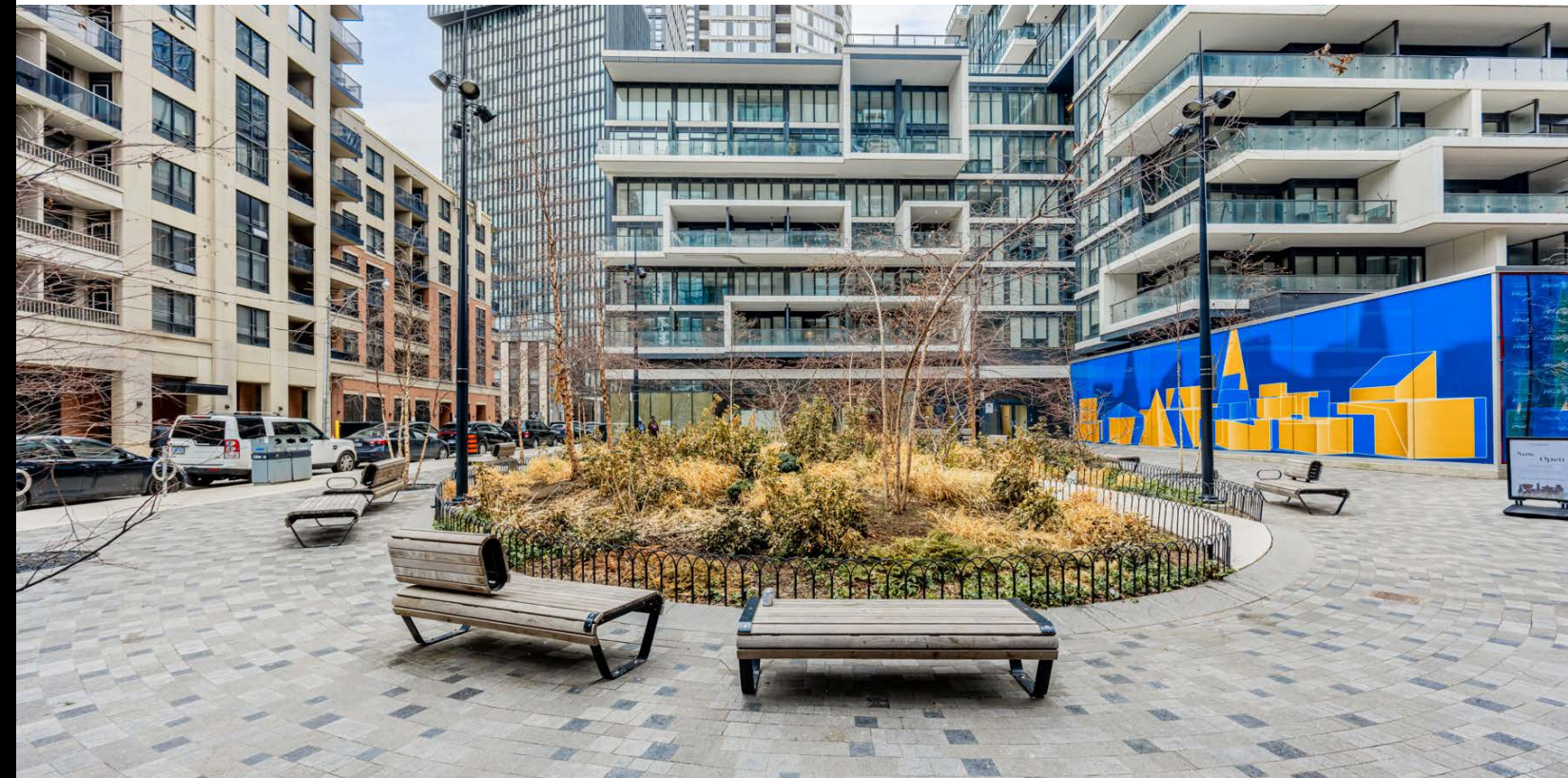
215 Church Street is located in the heart of Toronto's vibrant downtown core. The property is ideally situated within a stone's throw to key landmarks including The Eaton Centre, Toronto Metropolitan University, Massey Hall, and Yonge-Dundas Square.

KEY TRAFFIC GENERATORS

Toronto Eaton Centre is the city's top tourist attraction with over 52 million visitors annually. It is the busiest shopping centre in North America in terms of annual pedestrian count. It is consistently one of the top five performing malls in Canada.

Yonge-Dundas Square is often compared to NYC's Time Square, and is the central hub of downtown Toronto. The square hosts community celebrations, promotions and concerts and sees over 250 events each year with an average of 1,000,000+ event attendees each year.

Toronto Metropolitan University (formally Ryerson University) offers more than 100 undergraduate and graduate programs and is home to over 45,000 students.



TORONTO EATON CENTRE



YONGE-DUNDAS SQUARE



TORONTO METROPOLITAN UNIVERSITY



CONTACT

Arlin Markowitz*
Executive Vice President
416 815 2374
arlin.markowitz@cbre.com

Alex Edmison*
Senior Vice President
416 874 7266
alex.edmison@cbre.com

Jackson Turner**
Senior Vice President
416 815 2394
jackson.turner@cbre.com

Emily Everett*
Sales Associate
647 943 4185
emily.everett@cbre.com

*Sales Representative **Broker

The logo for CBRE, consisting of the letters "CBRE" in a bold, white, sans-serif font.

This disclaimer shall apply to CBRE Limited, Real Estate Brokerage, and to all other divisions of the Corporation; to include all employees and independent contractors ("CBRE"). The information set out herein, including, without limitation, any projections, images, opinions, assumptions and estimates obtained from third parties (the "Information") has not been verified by CBRE, and CBRE does not represent, warrant or guarantee the accuracy, correctness and completeness of the Information. CBRE does not accept or assume any responsibility or liability, direct or consequential, for the Information or the recipient's reliance upon the Information. The recipient of the Information should take such steps as the recipient may deem necessary to verify the Information prior to placing any reliance upon the Information. The Information may change and any property described in the Information may be withdrawn from the market at any time without notice or obligation to the recipient from CBRE. CBRE and the CBRE logo are the service marks of CBRE Limited and/or its affiliated or related companies in other countries. All other marks displayed on this document are the property of their respective owners. All Rights Reserved.