

FUJITEC

Elevators.
Escalators.
Service.

12694



R&D space available in Tukwila, WA

- One grade level door, One dock high door, 22' clear height
- Prime Tukwila location with easy access to I-5, I-405, SR-167 and Sea-Tac Airport
- Professional business park setting with surrounding industrial, office, and logistics users
- Rate of \$9,081.31 NNN/month till November 30, 2026, then \$9,444.56 NNN from December 1, 2026 to November 30, 2027



5,587 rsf available



Built in 1986



2.02/1,000 sf
parking ratio



\$9,081.31 NNN/month
Taxes \$1,177/month
Insurance \$298/month
CAM \$1,507/month

**Get more
information**

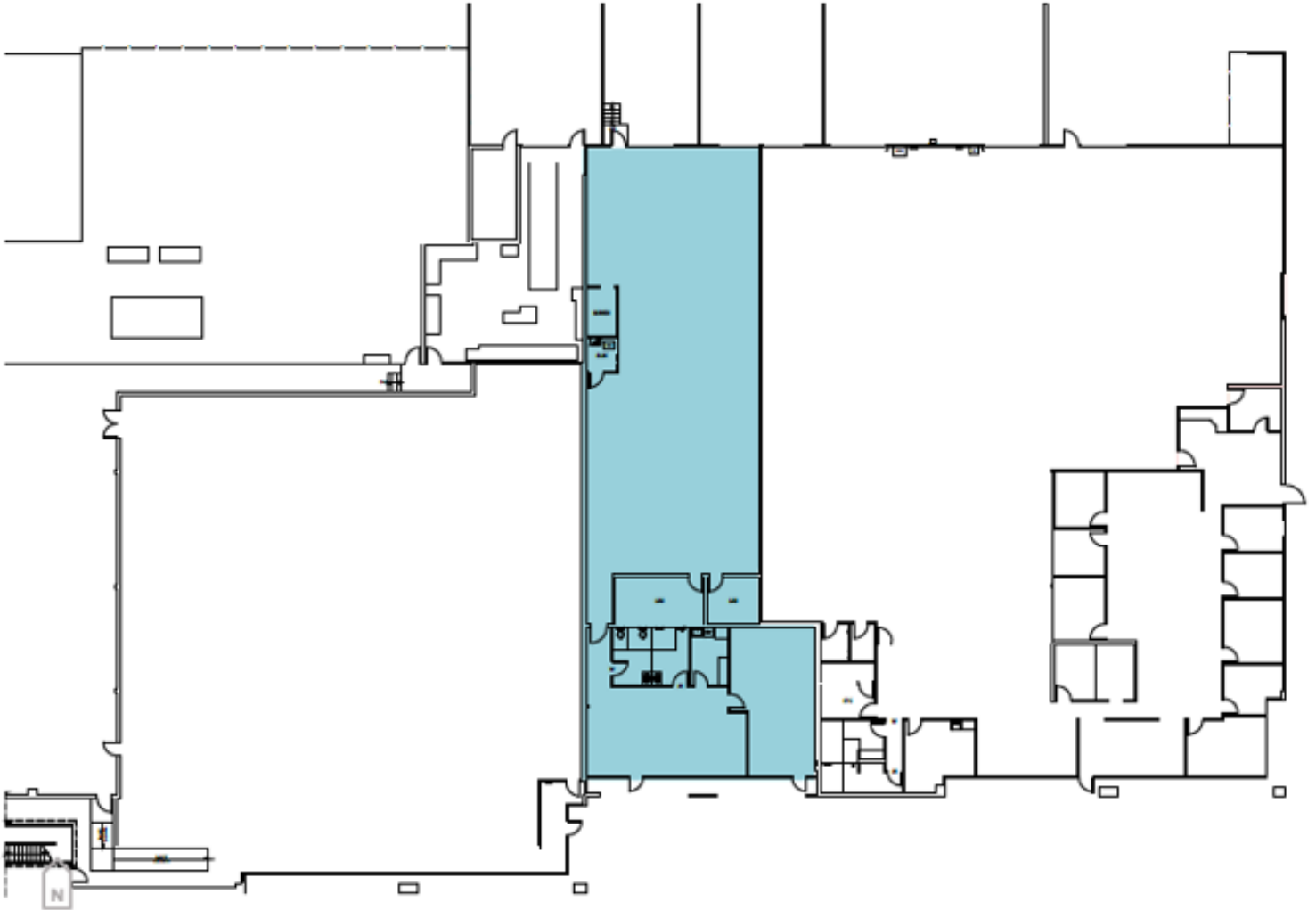
Buddy Turner
Principal
M: 214 269 3138

avisonyoung.com

Floor plan

12694 Gateway Drive S

BUILDING 2 | 5,587 SF



**Get more
information**

Buddy Turner
Principal
M: 214 269 3138

avisonyoung.com