

HIGHLAND HILLS 9, UNIT NO. 3

A PORTION OF THE SW 1/4 OF SECTION 23, T10N, R10E, M10M.

BEING A PORTION OF TRACT 1 OF R.S. 14-132
 COUNTY OF EL DORADO STATE OF CALIFORNIA
 NOVEMBER, 1993
 SCALE: 1"=100'
 CAPLON ENGINEERING INC.
 SHEET 2 OF 2

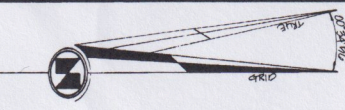
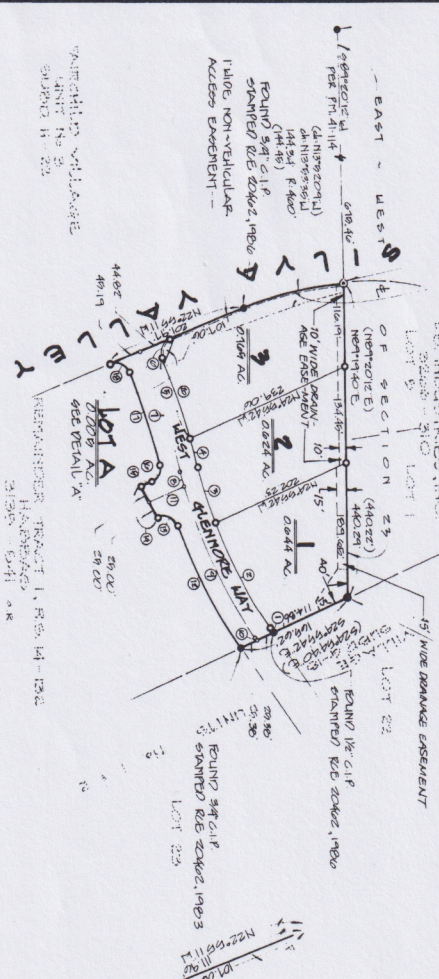
REFERENCES
 SUBD. 9-10
 R.S. 14-132 PH. 4-114
 R.S. 15-144
 R.S. 16-141

RAPIID OF BEARINGS
 THE BEARINGS OF THIS SURVEY ARE IDENTICAL TO THAT OF PH. 4-114 AND 15
 AND NORTH. ALL DISTANCES ARE GROUND DISTANCES.

1 SET 1/2" C.I.P. STAMPED L.S. 4003, 1993
 OVER FOUND 3/4" C.I.P.
 STAMPED R.E. 2002, 1980

FOUND 1/2" C.I.P. STAMPED L.S. 4003, 1993
 MARKING THE N 1/4 CORNER
 OF SECTION 23

REVERSE, REVERSE, OBSERVATION
 SUBD. 9-10
 LANDSCAPING & FENCE MAINTENANCE
 SCHEMATIC, 1993
 OF EL DORADO
 COUNTY, CALIFORNIA



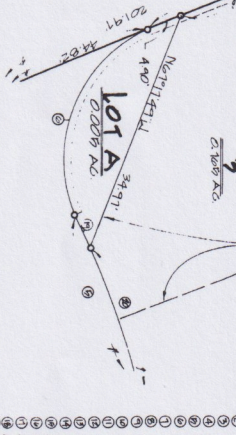
NOTES

1. ALL DISTANCES SHOWN ON CURVED LINES ARE CHORD MEASUREMENTS.
2. ALL RADII ARE CENTERLINE RADII UNLESS OTHERWISE SHOWN.
3. ALL LOT LINES ALONG ROADS ARE PARALLEL TO THE ROAD CENTERLINE, UNLESS OTHERWISE SHOWN.
4. UNIT NO. 3 CONSISTS OF PHASE 1 OF THE TENTATIVE MAP FOR HIGHLAND HILLS, UNIT NO. 3, TM 87-1079

LEGEND

- FOUND MONUMENT AS SHOWN HEREON
- SET 1/2" C.I.P. STAMPED L.S. 4003, 1993
- SET 3/4" C.I.P. STAMPED L.S. 4003, 1993
- COMPUTATION POINT - NO MONUMENTATION
- RECOVER DATA FROM SUBD. 9-10 AND/OR R.S. 14-132
- 100' IRRECOVERABLE OFFSET OF REPLICATION

LANDSCAPING AND FENCE MAINTENANCE SCHEMATIC



DETAIL "A"
 NO SCALE

TABULATION

NO.	BEARING	DISTANCE	AREA
1	S 89° 01' 15" E	114.41'	11,129'
2	S 89° 01' 15" E	114.41'	11,129'
3	S 89° 01' 15" E	114.41'	11,129'
4	S 89° 01' 15" E	114.41'	11,129'
5	S 89° 01' 15" E	114.41'	11,129'
6	S 89° 01' 15" E	114.41'	11,129'
7	S 89° 01' 15" E	114.41'	11,129'
8	S 89° 01' 15" E	114.41'	11,129'
9	S 89° 01' 15" E	114.41'	11,129'
10	S 89° 01' 15" E	114.41'	11,129'
11	S 89° 01' 15" E	114.41'	11,129'
12	S 89° 01' 15" E	114.41'	11,129'
13	S 89° 01' 15" E	114.41'	11,129'
14	S 89° 01' 15" E	114.41'	11,129'
15	S 89° 01' 15" E	114.41'	11,129'
16	S 89° 01' 15" E	114.41'	11,129'
17	S 89° 01' 15" E	114.41'	11,129'
18	S 89° 01' 15" E	114.41'	11,129'
19	S 89° 01' 15" E	114.41'	11,129'
20	S 89° 01' 15" E	114.41'	11,129'
21	S 89° 01' 15" E	114.41'	11,129'
22	S 89° 01' 15" E	114.41'	11,129'
23	S 89° 01' 15" E	114.41'	11,129'
24	S 89° 01' 15" E	114.41'	11,129'
25	S 89° 01' 15" E	114.41'	11,129'
26	S 89° 01' 15" E	114.41'	11,129'
27	S 89° 01' 15" E	114.41'	11,129'
28	S 89° 01' 15" E	114.41'	11,129'
29	S 89° 01' 15" E	114.41'	11,129'
30	S 89° 01' 15" E	114.41'	11,129'
31	S 89° 01' 15" E	114.41'	11,129'
32	S 89° 01' 15" E	114.41'	11,129'
33	S 89° 01' 15" E	114.41'	11,129'
34	S 89° 01' 15" E	114.41'	11,129'
35	S 89° 01' 15" E	114.41'	11,129'
36	S 89° 01' 15" E	114.41'	11,129'
37	S 89° 01' 15" E	114.41'	11,129'
38	S 89° 01' 15" E	114.41'	11,129'
39	S 89° 01' 15" E	114.41'	11,129'
40	S 89° 01' 15" E	114.41'	11,129'
41	S 89° 01' 15" E	114.41'	11,129'
42	S 89° 01' 15" E	114.41'	11,129'
43	S 89° 01' 15" E	114.41'	11,129'
44	S 89° 01' 15" E	114.41'	11,129'
45	S 89° 01' 15" E	114.41'	11,129'
46	S 89° 01' 15" E	114.41'	11,129'
47	S 89° 01' 15" E	114.41'	11,129'
48	S 89° 01' 15" E	114.41'	11,129'
49	S 89° 01' 15" E	114.41'	11,129'
50	S 89° 01' 15" E	114.41'	11,129'
51	S 89° 01' 15" E	114.41'	11,129'
52	S 89° 01' 15" E	114.41'	11,129'
53	S 89° 01' 15" E	114.41'	11,129'
54	S 89° 01' 15" E	114.41'	11,129'
55	S 89° 01' 15" E	114.41'	11,129'
56	S 89° 01' 15" E	114.41'	11,129'
57	S 89° 01' 15" E	114.41'	11,129'
58	S 89° 01' 15" E	114.41'	11,129'
59	S 89° 01' 15" E	114.41'	11,129'
60	S 89° 01' 15" E	114.41'	11,129'
61	S 89° 01' 15" E	114.41'	11,129'
62	S 89° 01' 15" E	114.41'	11,129'
63	S 89° 01' 15" E	114.41'	11,129'
64	S 89° 01' 15" E	114.41'	11,129'
65	S 89° 01' 15" E	114.41'	11,129'
66	S 89° 01' 15" E	114.41'	11,129'
67	S 89° 01' 15" E	114.41'	11,129'
68	S 89° 01' 15" E	114.41'	11,129'
69	S 89° 01' 15" E	114.41'	11,129'
70	S 89° 01' 15" E	114.41'	11,129'
71	S 89° 01' 15" E	114.41'	11,129'
72	S 89° 01' 15" E	114.41'	11,129'
73	S 89° 01' 15" E	114.41'	11,129'
74	S 89° 01' 15" E	114.41'	11,129'
75	S 89° 01' 15" E	114.41'	11,129'
76	S 89° 01' 15" E	114.41'	11,129'
77	S 89° 01' 15" E	114.41'	11,129'
78	S 89° 01' 15" E	114.41'	11,129'
79	S 89° 01' 15" E	114.41'	11,129'
80	S 89° 01' 15" E	114.41'	11,129'
81	S 89° 01' 15" E	114.41'	11,129'
82	S 89° 01' 15" E	114.41'	11,129'
83	S 89° 01' 15" E	114.41'	11,129'
84	S 89° 01' 15" E	114.41'	11,129'
85	S 89° 01' 15" E	114.41'	11,129'
86	S 89° 01' 15" E	114.41'	11,129'
87	S 89° 01' 15" E	114.41'	11,129'
88	S 89° 01' 15" E	114.41'	11,129'
89	S 89° 01' 15" E	114.41'	11,129'
90	S 89° 01' 15" E	114.41'	11,129'
91	S 89° 01' 15" E	114.41'	11,129'
92	S 89° 01' 15" E	114.41'	11,129'
93	S 89° 01' 15" E	114.41'	11,129'
94	S 89° 01' 15" E	114.41'	11,129'
95	S 89° 01' 15" E	114.41'	11,129'
96	S 89° 01' 15" E	114.41'	11,129'
97	S 89° 01' 15" E	114.41'	11,129'
98	S 89° 01' 15" E	114.41'	11,129'
99	S 89° 01' 15" E	114.41'	11,129'
100	S 89° 01' 15" E	114.41'	11,129'

