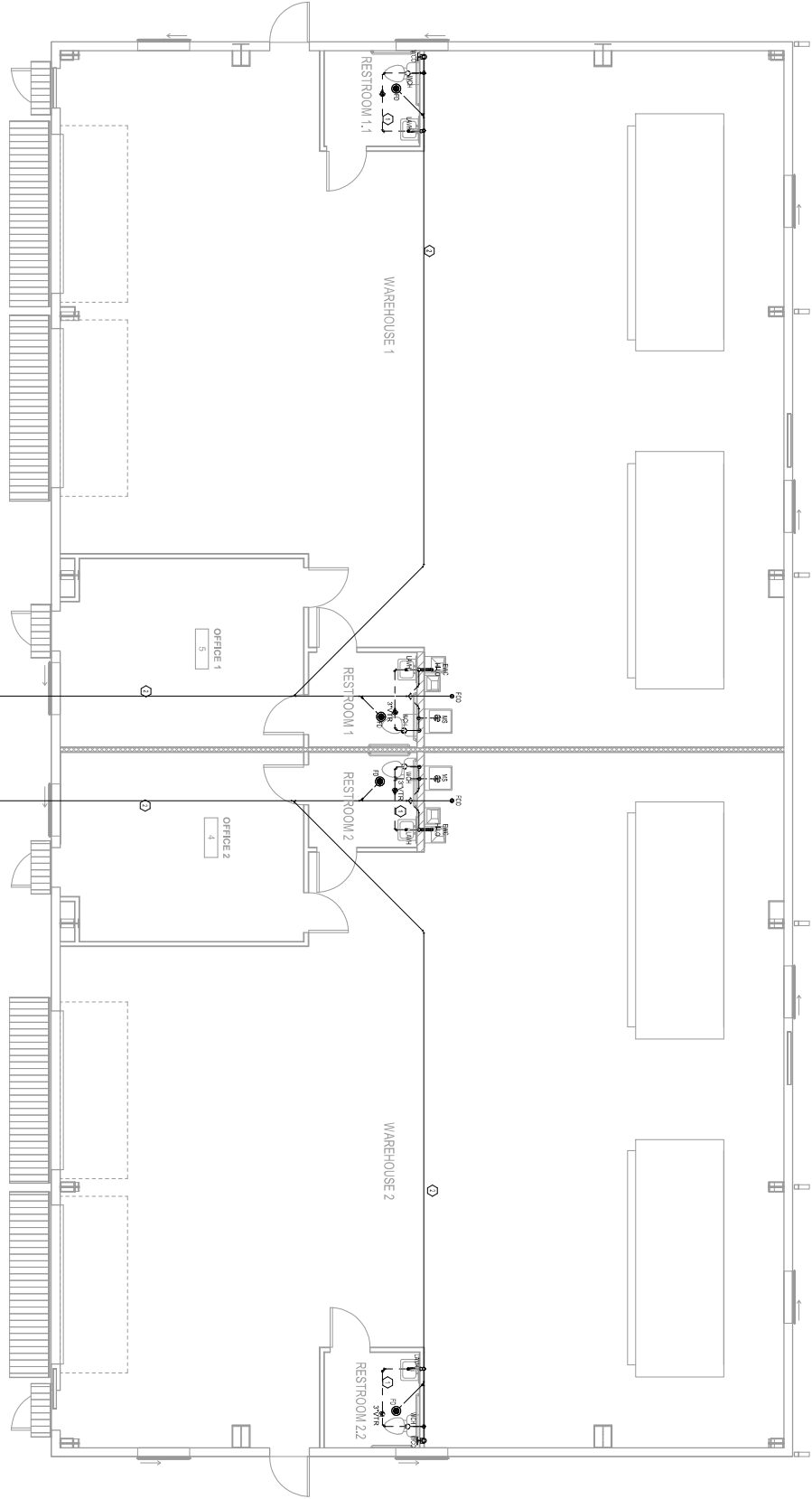


1 Bumping And Associates Inc. Plans Sheet Line
 1/2" / 1/8" = 1' = 0"



Reference Notes	
1	See Notes
2	See Notes
3	See Notes



Farshad Antikchi, PE
 This plan has been signed and sealed using a Digital Signature. Printed copies of this document are not considered signed and sealed and any electronic copies using eSign@net.net

Digitally signed by Farshad Antikchi
 DN: c=US, o=Unaffiliated, ou=A01410C000001681D9EE A79000040ED, cn=Farshad Antikchi
 Date: 2019.09.13 10:42:56 -0400'

#	DESCRIPTION	DATE	BY

DATE: 07/18/2019
 SCALE: AS SHOWN
 JOB NUMBER: 19-0000040ED
 DRAWING TITLE: 560 BARRY STREET WAREHOUSE
 P-1

560 Barry St
 WAREHOUSE
 560 BARRY STREET
 ORLANDO FLORIDA

Engineering Consultants
 EPG
 1205 South Barry Ave
 Orlando, Florida 32806
 (407) 698-7413 phone
 (407) 698-7412 fax
 EPG@aigb.com
 CA87513

BUMPUS AND ASSOCIATES, INC.
 ARCHITECTURE - INTERIOR DESIGN
 www.BUMPUSANDASSOCIATES.com
 603 FRONT STREET
 CELEBRATION, FLORIDA 34747
 Ph: (407) 566-0300
 Fax: (407) 566-2222
 AA C03051 AR 0008045

This is a digital copy. Not valid for printing or signing. For digital signature verification, please refer to the original document.