

FOR LEASE

EVERGLADES PROFESSIONAL OFFICES

3765 - 3785 AIRPORT-PULLING RD N, NAPLES, FL 34105



John Paulich IV
Senior Advisor
239.676.1242
John.Paulich@TrinityCRE.com

Doug Olson
Partner

Matt Fredrickson
Partner

Gianna Grigaliunas
Associate

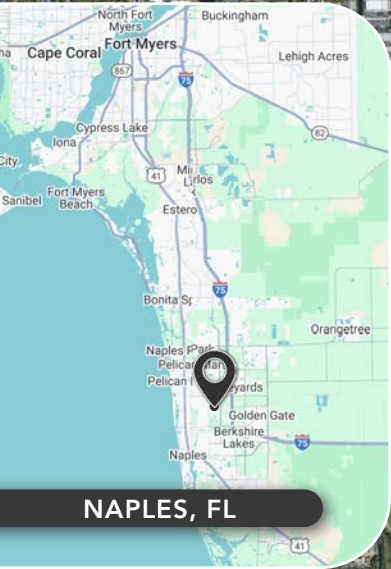


TrinityCRE.com

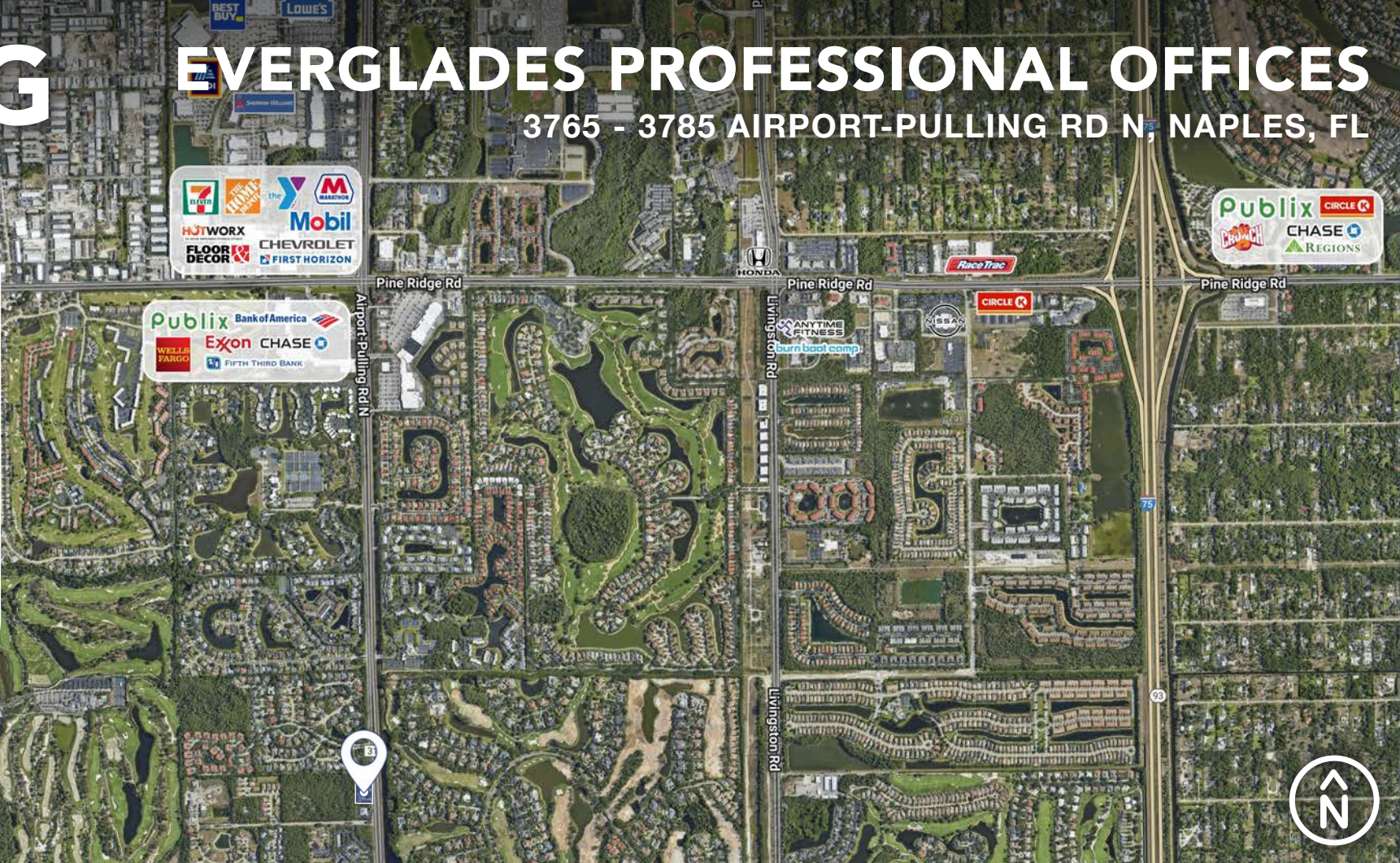


EVERGLADES PROFESSIONAL OFFICES

3765 - 3785 AIRPORT-PULLING RD N, NAPLES, FL



NAPLES, FL



2026 DEMOGRAPHICS



AVERAGE H.H INCOME

	1 MILE	3 MILE	5 MILE
AVERAGE H.H INCOME	\$206,522	\$208,082	\$177,059



POPULATION

POPULATION	4,519	50,430	145,556
------------	-------	--------	---------



EMPLOYMENT DENSITY

EMPLOYMENT DENSITY	1,719	51,663	105,490
--------------------	-------	--------	---------

PROPERTY DETAILS

PRICE	Call for Details
AVAILABLE	Unit 100: 2,475± SF
ZONING	Commercial
LOCATION	This subject site is located on the west side of Airport-Pulling Rd just north of Bailey Ln in Naples, FL



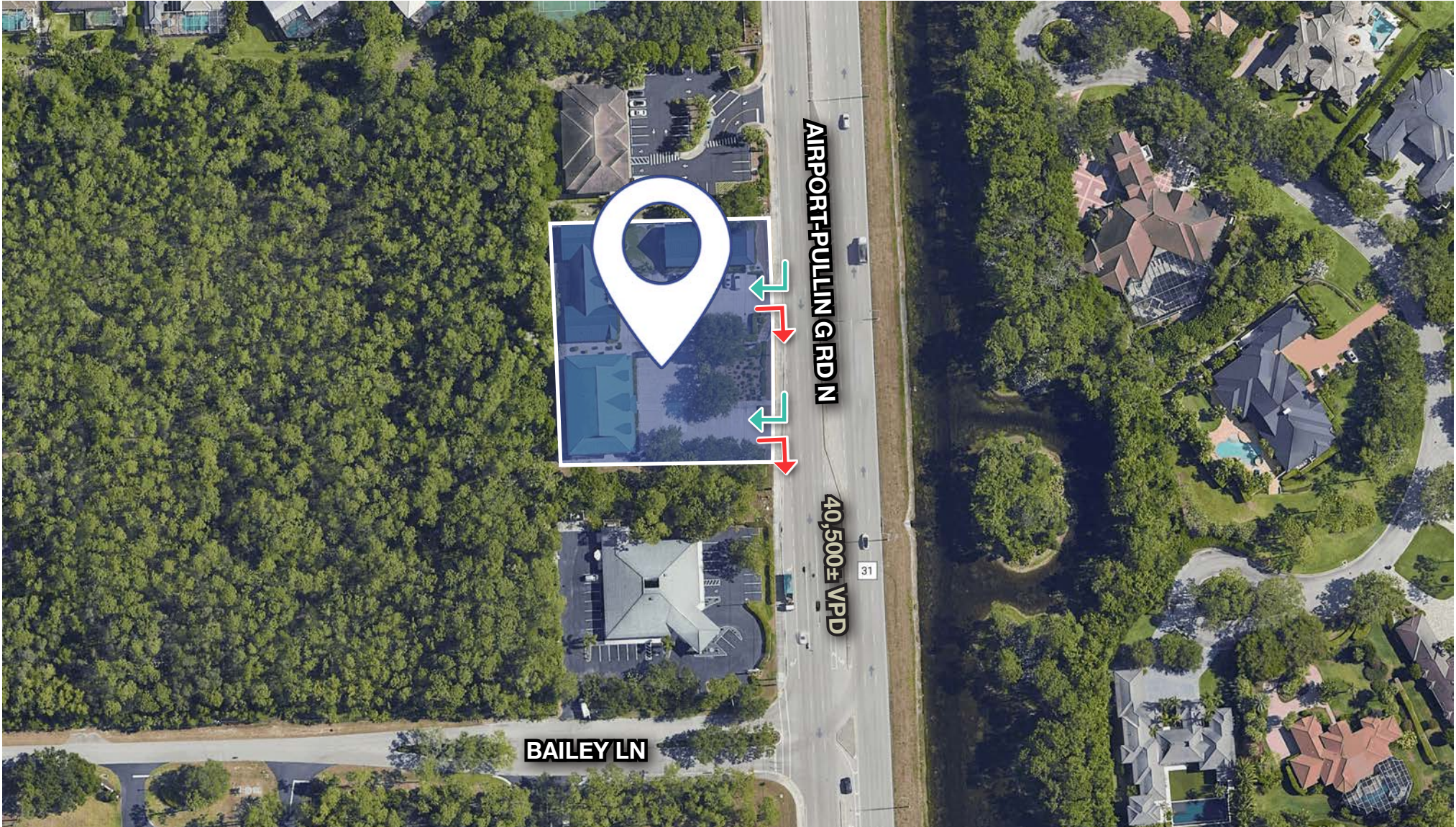
TrinityCRE.com
© Trinity Commercial Group
This information is considered accurate, but not guaranteed.

Experts in the Market
Partners in Your Success



EVERGLADES PROFESSIONAL OFFICES

3765 - 3785 AIRPORT-PULLING RD N, NAPLES, FL



John Paulich IV
Senior Advisor
239.676.1242
John.Paulich@TrinityCRE.com

Doug Olson
Partner

Matt Fredrickson
Partner

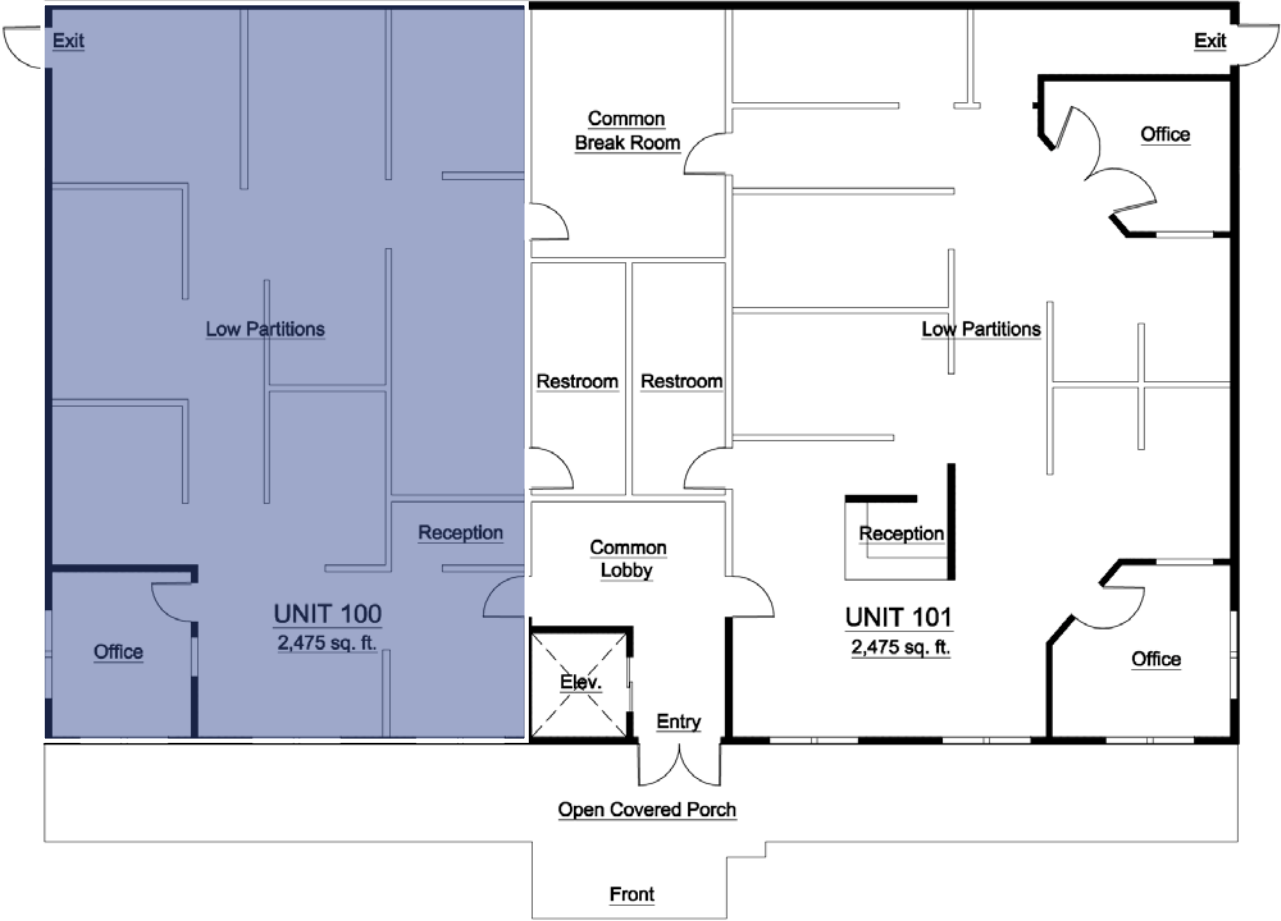
Gianna Grigaliunas
Associate



TrinityCRE.com

EVERGLADES PROFESSIONAL OFFICES

3765 - 3785 AIRPORT-PULLING RD N, NAPLES, FL



UNIT 100



John Paulich IV
Senior Advisor
239.676.1242
John.Paulich@TrinityCRE.com

Doug Olson
Partner
Matt Fredrickson
Partner

Gianna Grigaliunas
Associate

