

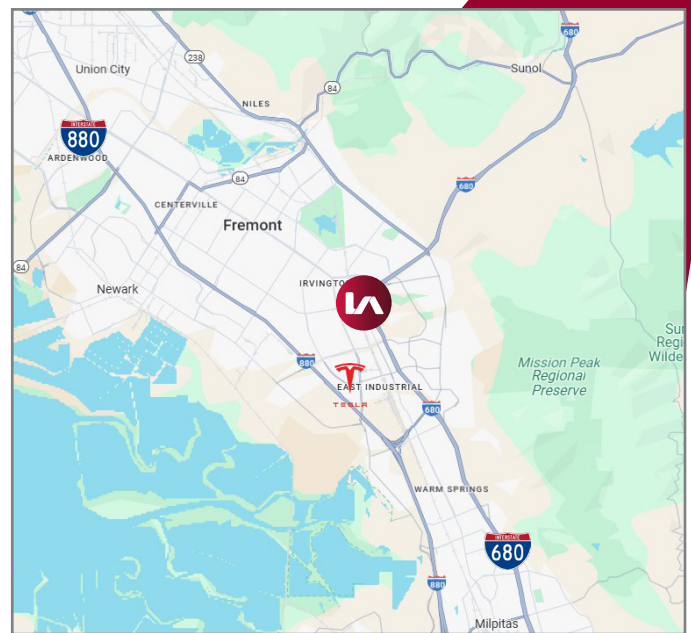
AVAILABLE FOR SUBLEASE

3345 SELDON COURT | FREMONT, CA



LISTING DATA:

- 7,178± SF Warehouse
- Small Fenced Yard
- 3,400± SF Office Area on 2 Floors
- 3 Restrooms & Breakroom
- 2 Grade Level Doors
- 16.5' Clear Height
- Located in the Jonce Thomas Industrial Park & off of Osgood Road
- Excellent Access to I-680 & I-880 via Auto Mall Parkway
- Lease Rate: \$1.45/SF, NNN + \$0.15/SF Opex
- LED: 5/31/2026
- Available Now



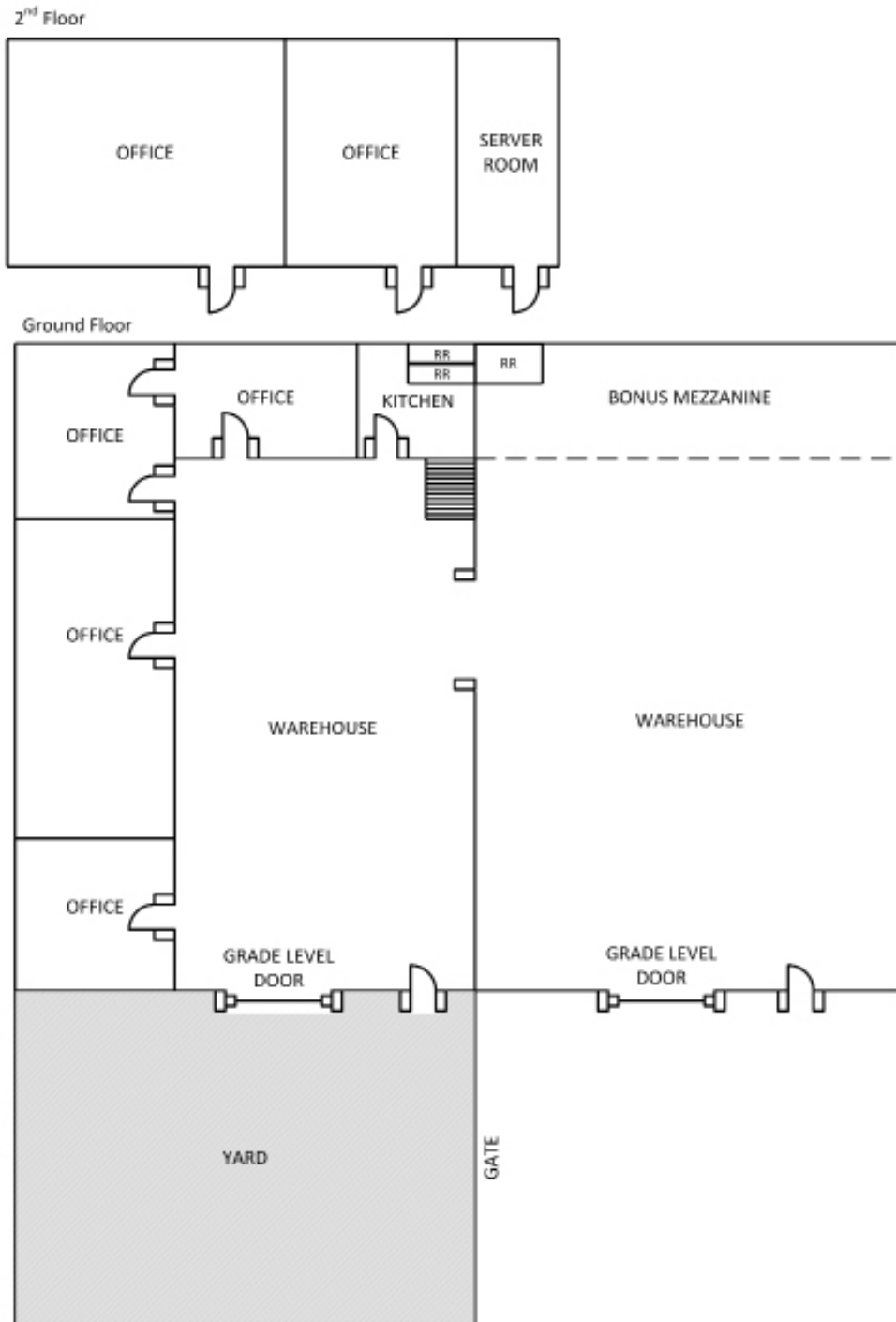
EXCLUSIVE AGENTS:

Ryan Martens, Principal
E \\ rmartens@lee-associates.com
P \\ 510.903.7605 | LIC# 01709157

Nathan Vance, Principal
E \\ nvance@lee-associates.com
P \\ 510.907.3021 | LIC# 02039163

AVAILABLE FOR SUBLEASE

3345 SELDON COURT | FREMONT, CA



EXCLUSIVE AGENTS:

Ryan Martens, Principal

E \\ rmartens@lee-associates.com

P \\ 510.903.7605 | LIC# 01709157

Nathan Vance, Principal

E \\ nvance@lee-associates.com

P \\ 510.907.3021 | LIC# 02039163