



# BARE HILLS BUSINESS CENTER

1421 Clarkview Road | Baltimore, MD 21209

DEMOGRAPHICS	1 MILE	3 MILE	5 MILE
Population	7,991	110,424	366,012
Households	3,523	45,047	149,405
Avg. HH Income	\$102,403	\$95,424	\$75,454
Zoning	ML - IM		
Traffic Count	15,346 vehicles per day		

## PROPERTY FEATURES

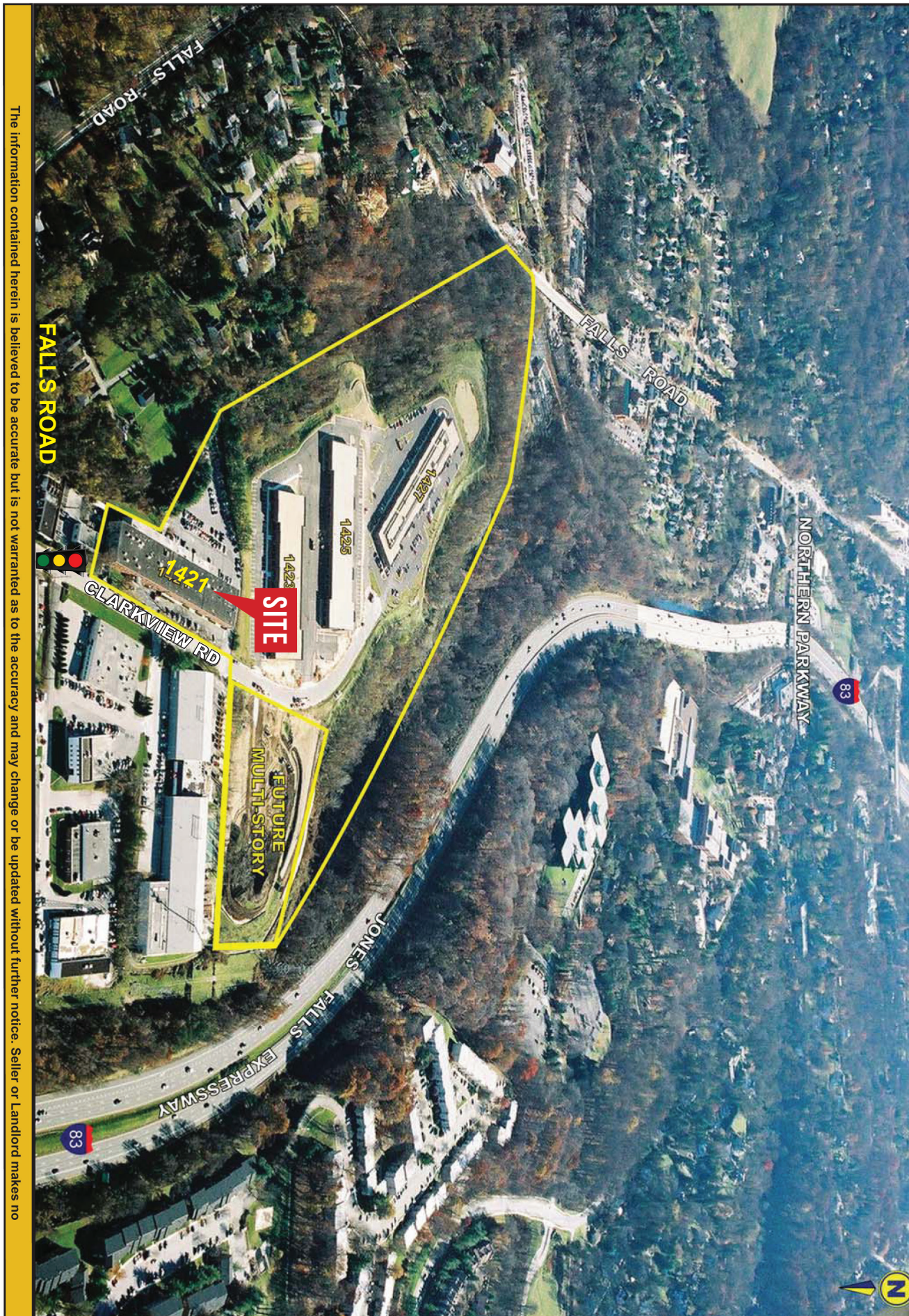
- 55,000 total sf
- Land Area: 3.92 acres
- Ceiling Height: 18 ft
- Parking: 4 spaces per 1,000 sf
- Office, Retail and Warehouse
- Convenient access to downtown Baltimore and Central Baltimore County

## FOR INFORMATION CONTACT

**LAWRENCE RIEF**  
lawrencer@crcrealty.com  
443.921.4341

The information contained herein is believed to be accurate but is not warranted as to the accuracy and may change or be updated without further notice. Seller or Landlord makes no representation as to the condition of the property and recommends purchaser's or tenant's independent investigation.

## OTHER NEARBY BUSINESSES



The information contained herein is believed to be accurate but is not warranted as to the accuracy and may change or be updated without further notice. Seller or Landlord makes no



## BARE HILLS BUSINESS CENTER

Suite	Tenant	Area (SF)
100 A-B	Connor	7,763
100 C	No Limit Fitness	4,305
107	<b>AVAILABLE</b>	1,304
108-109	SOS Technologies	3,300
110	<b>AVAILABLE</b>	1,608
112	Roland Park Orthodontics	2,400
114-116	Jones Lighting	5,020
118	International Violin Company	2,500
120	Roland Park Dental	2,500
122	<b>AVAILABLE</b>	2,500
124	<b>AVAILABLE</b>	2,500
126	Acorn Health	2,000
128-130	Acorn Health	4,000
200	Goral Trading	2,400
206	Sustainable-Chi	3,067
205	Avid Practice	2,251
204	Realty One Group	1,433
208	Realty One Group	1,433
<b>TOTAL:</b>		<b>52,284</b>

Landlord does not covenant that any occupant indicated hereon will be a tenant in the space marked or in this shopping center. Nothing contained herein shall be deemed to imit, waive, or lessen the rights of Landlord under the lease. This exhibit shows only Tenant's location in the Landlord's property and is not a scale drawing showing size, etc.

