

5908

Triangle Dr
Raleigh, NC 27617

Centrally Located, Full Building Sublease Opportunity

FOR SUBLEASE



Located off Glenwood near I-540 and RDU International

NEWMARK

4242 Six Forks Road, Suite 930, Raleigh, NC 27609
919-390-0281 | nmrk.com

For more information, please contact our exclusive agent:

Issac Brown
Managing Director

t 919-390-0282 | issac.brown@nmrk.com

Cole Gonet
Managing Director

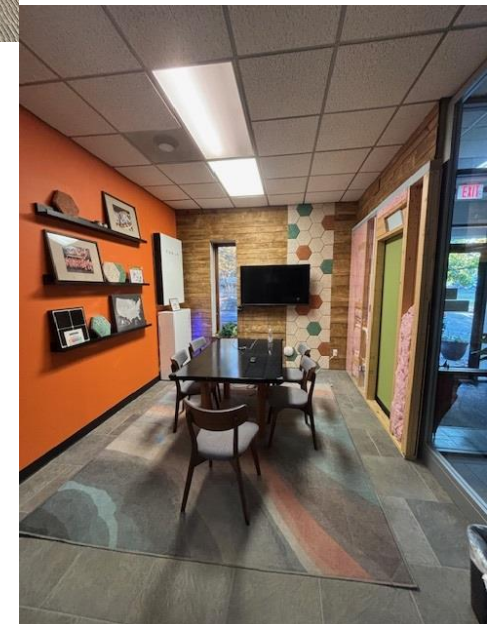
t 919-390-0322 | cole.gonet@nmrk.com

Triangle Dr Sublease

5908 Triangle Dr, Raleigh, NC 27617

Overview

- 16,800 SF building on 3.4 acre site
- Can sublease the entire building OR 6k SF office
- Available with 90-120 days notice
- Sublease expiration **August 31, 2028**
- Building and Monument Signage Available
- Ample parking ratio of 3 / 1,000 SF
- Approximately 50 / 50 office to warehouse ratio
- 18' clear height in warehouse
- (2) dock doors located the side of the building
- Mezzanine storage in back of warehouse
- Small outdoor patio
- Zoned I-2
- Great location within the market near RTP
- Convenient access to Glenwood Ave, I-540 and RDU International Airport

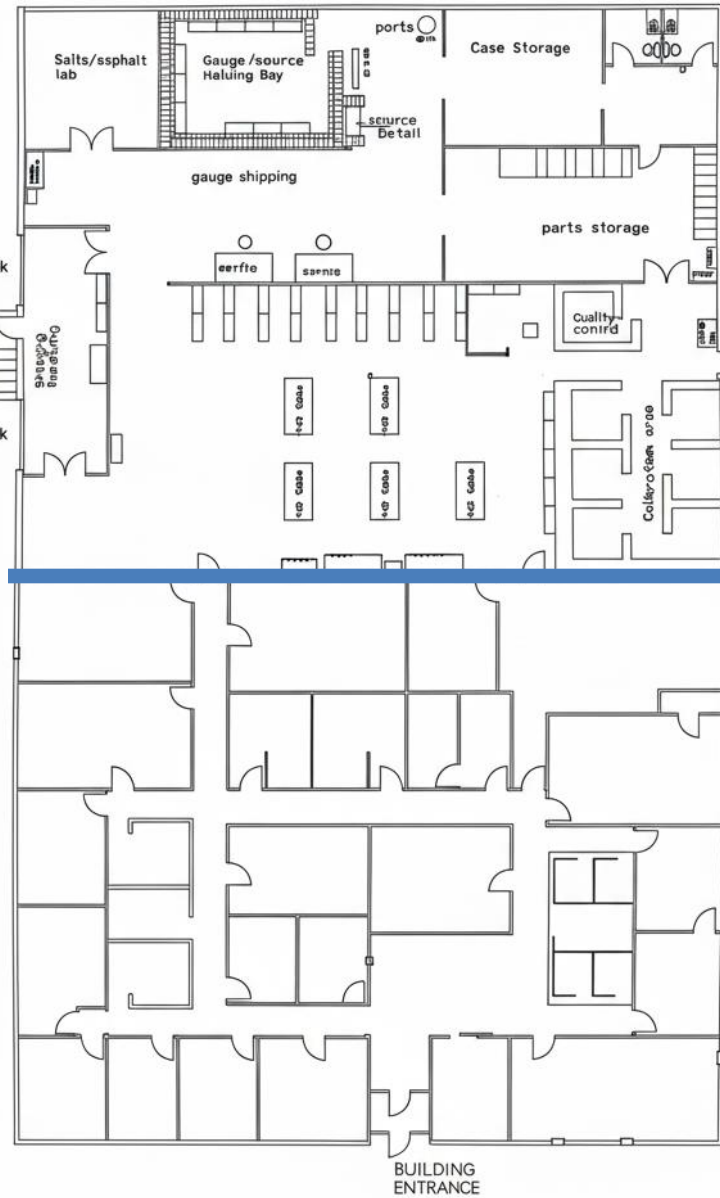
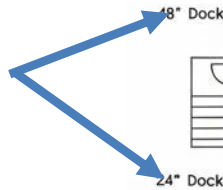


Triangle Dr Sublease

5908 Triangle Dr, Raleigh, NC 27617

Floor Plan

Dock Doors



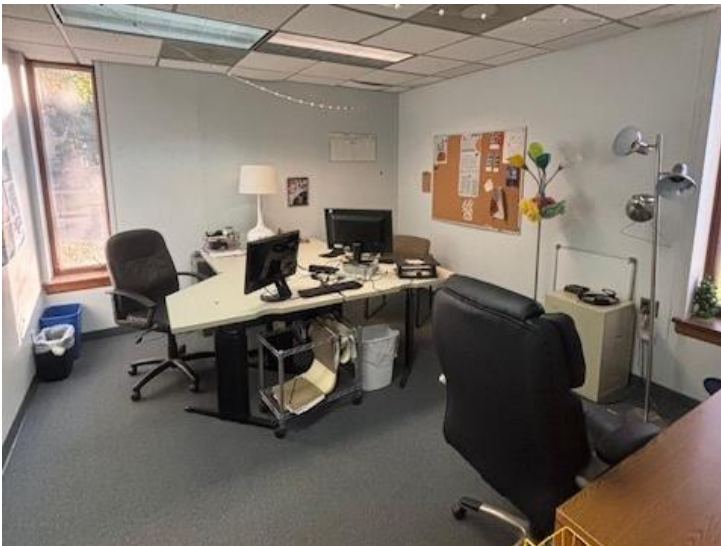
Warehouse

Office

Triangle Dr Sublease

5908 Triangle Dr, Raleigh, NC 27617

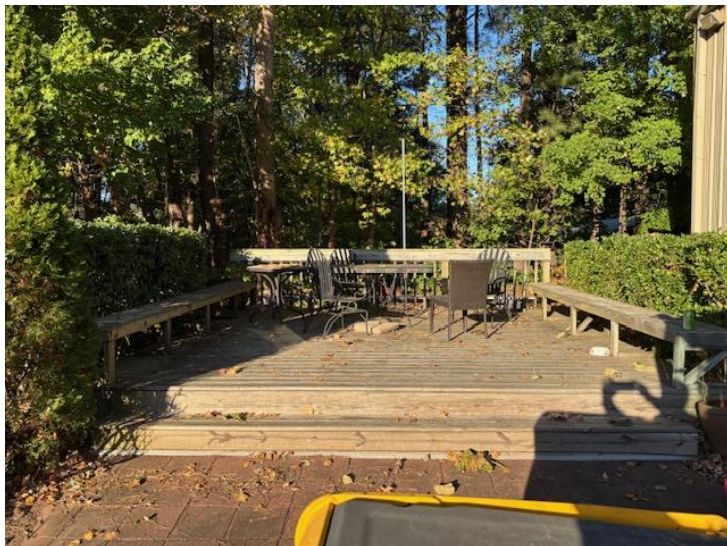
Space Photos



Triangle Dr Sublease

5908 Triangle Dr, Raleigh, NC 27617

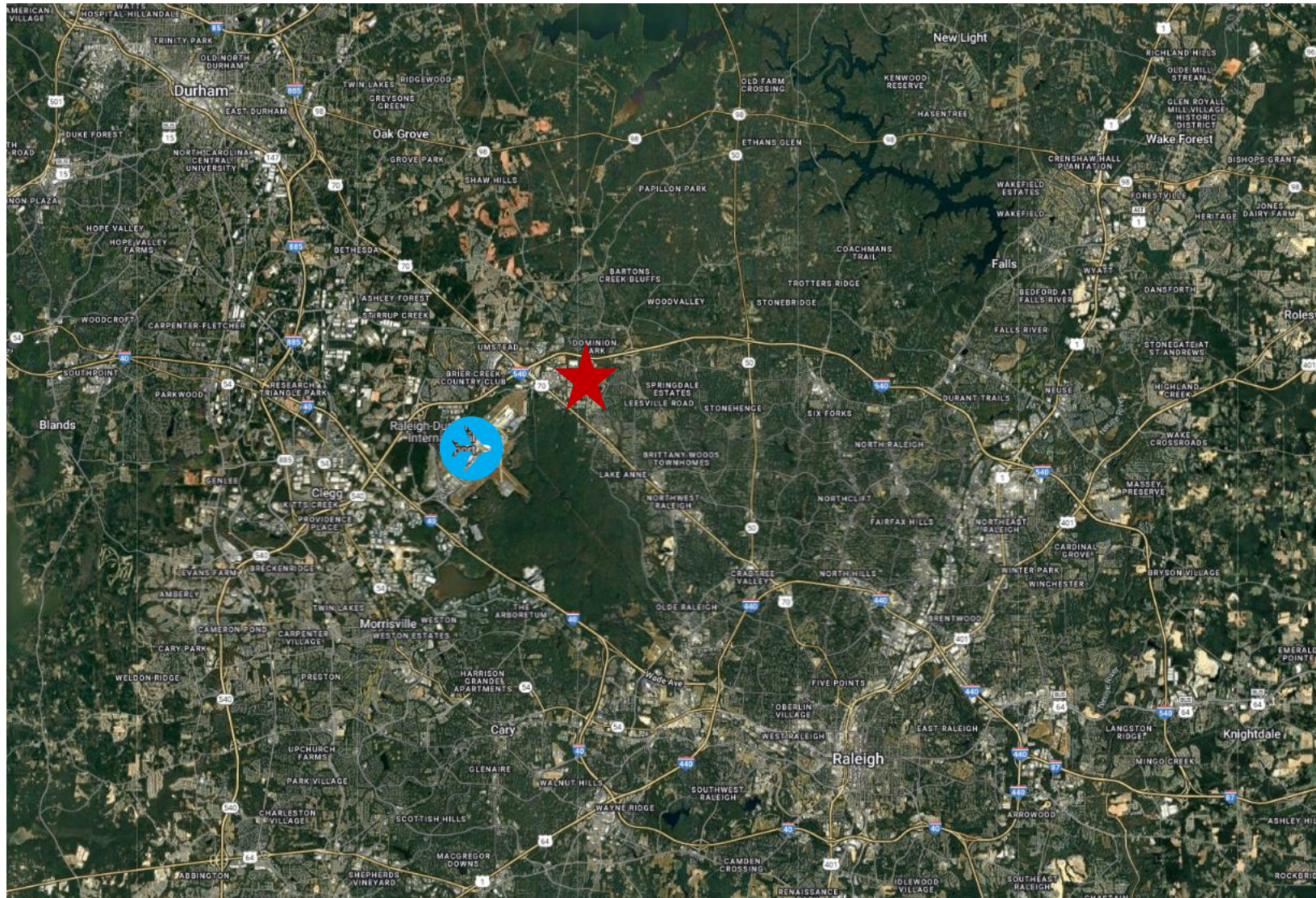
Space Photos



Triangle Dr Sublease

5908 Triangle Dr, Raleigh, NC 27617

Aerial Map





For more information:

Issac Brown
Managing Director

t 919-390-0282
issac.brown@nmrk.com

Cole Gonet
Managing Director

t 919-390-0322
Cole.gonet@nmrk.com

Raleigh / Durham Office
4242 Six Forks Road
Suite 930
Raleigh, NC 27609
t 919-390-0281

nmrk.com