

ESSEX MEDICAL CENTER



769 Northfield Ave, West Orange, NJ

CONSTRUCTION COMPLETED

State-of-the-art medical building in Essex County

This class A medical office building is centrally located minutes from major medical centers.

- Building size: ±70,000 sf
- Multi-million dollar renovation complete
- 24/7 access
- Building and monument signage
- On-site property manager
- Fully ADA accessible
- Institutional ownership



AVAILABLE FOR LEASE

LOWER LEVEL – 1,800 SF / 6,000 RSF
ENTIRE SECOND FLOOR – 27,000 RSF
PENTHOUSE LEVEL – 3,500 RSF

For more information:

Steven Geltzeiler
Senior Vice President
+1 973 898 4013
steven.geltzeiler@avisonyoung.com

Jeffrey L. Heller, SIOR
Principal & Executive Director
+1 973 753 1100
jeff.heller@avisonyoung.com

OWNED



LEASED & MANAGED



ESSEX MEDICAL CENTER

769 Northfield Ave, West Orange, NJ



For more information:

Steven Geltzeiler
Senior Vice President
+1 973 898 4013
steven.geltzeiler@avisonyoung.com

Jeffrey L. Heller, SIOR
Principal & Executive Director
+1 973 753 1100
jeff.heller@avisonyoung.com

OWNED

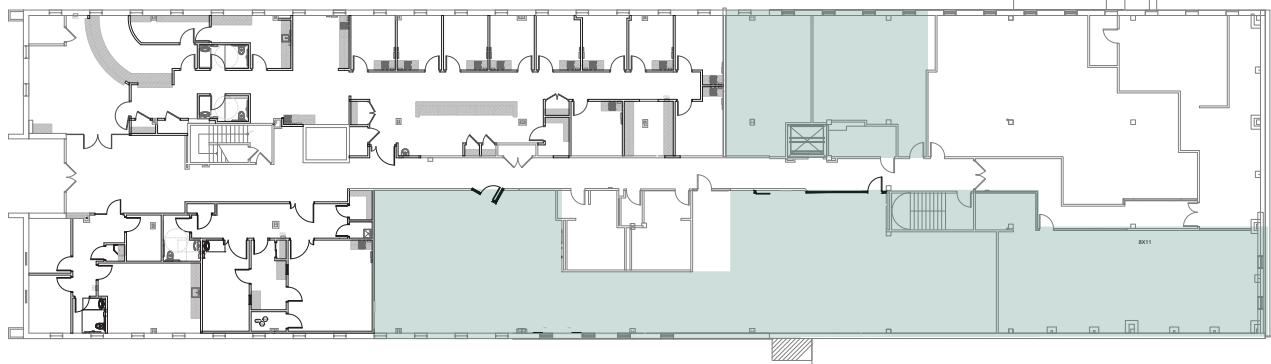


LEASED & MANAGED

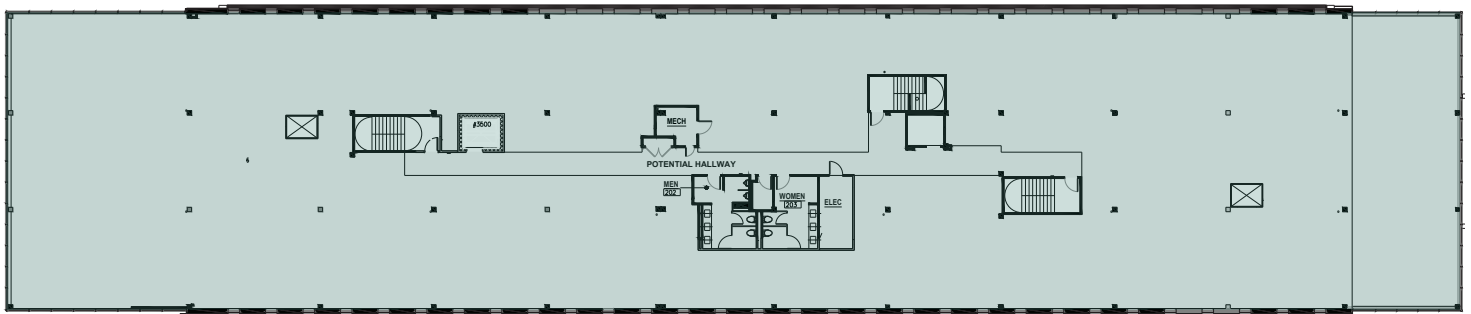


© 2025 Avison Young. Information contained herein was obtained from sources deemed reliable and, while thought to be correct, have not been verified. Avison Young does not guarantee the accuracy or completeness of the information presented, nor assumes any responsibility or liability for any errors or omissions therein.

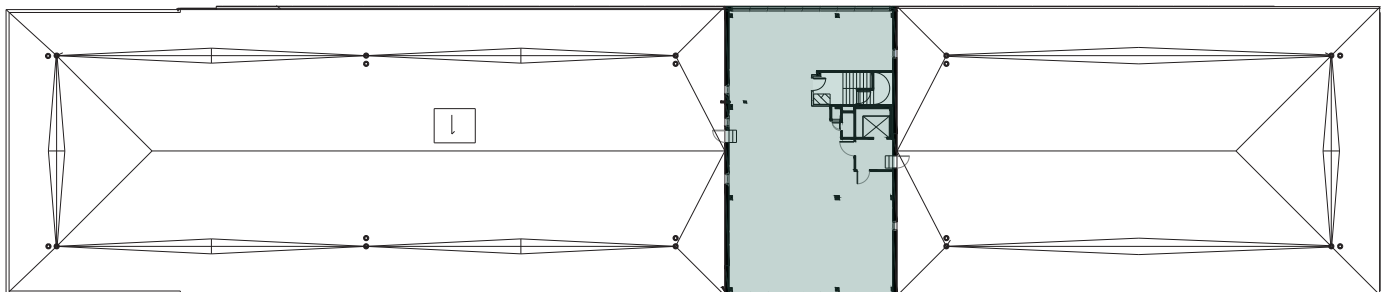
LOWER LEVEL – 1,800 RSF / 6,000 RSF



ENTIRE SECOND FLOOR – 27,000 RSF



PENTHOUSE LEVEL – 3,500 RSF



For more information:

Steven Geltzeiler
Senior Vice President
+1 973 898 4013
steven.geltzeiler@avisonyoung.com

Jeffrey L. Heller, SIOR
Principal & Executive Director
+1 973 753 1100
jeff.heller@avisonyoung.com

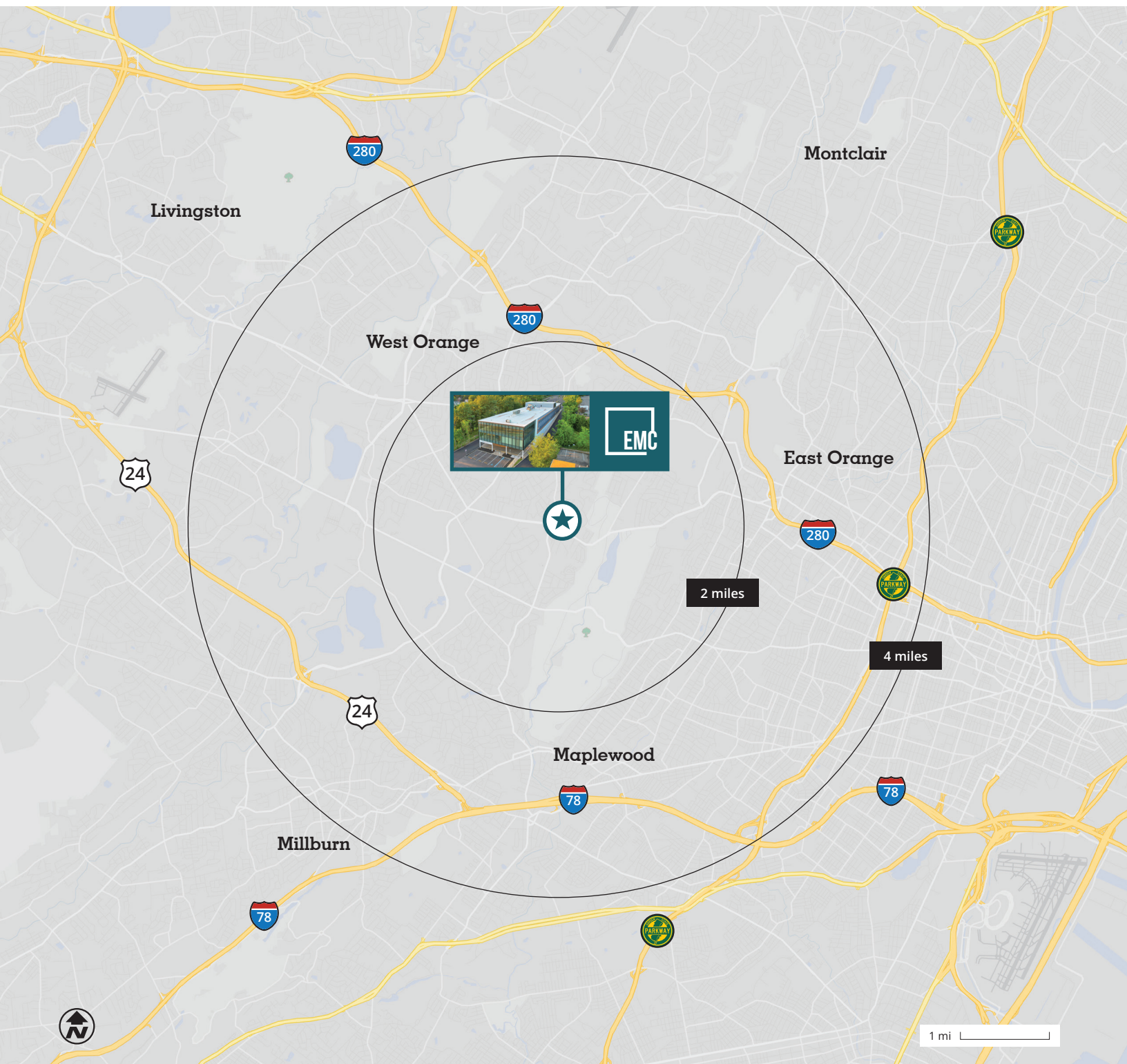
OWNED

LEASED & MANAGED



ESSEX MEDICAL CENTER

769 Northfield Ave, West Orange, NJ



For more information:

Steven Geltzeiler
Senior Vice President
+1 973 898 4013
steven.geltzeiler@avisonyoung.com

Jeffrey L. Heller, SIOR
Principal & Executive Director
+1 973 753 1100
jeff.heller@avisonyoung.com

OWNED



LEASED & MANAGED

