

1827-1855 NORTHFIELD DR.

UNIT #1841 & #1855

ROCHESTER HILLS, MICHIGAN

INDUSTRIAL FOR LEASE

5,600 & 7,412 Square Feet Units Available



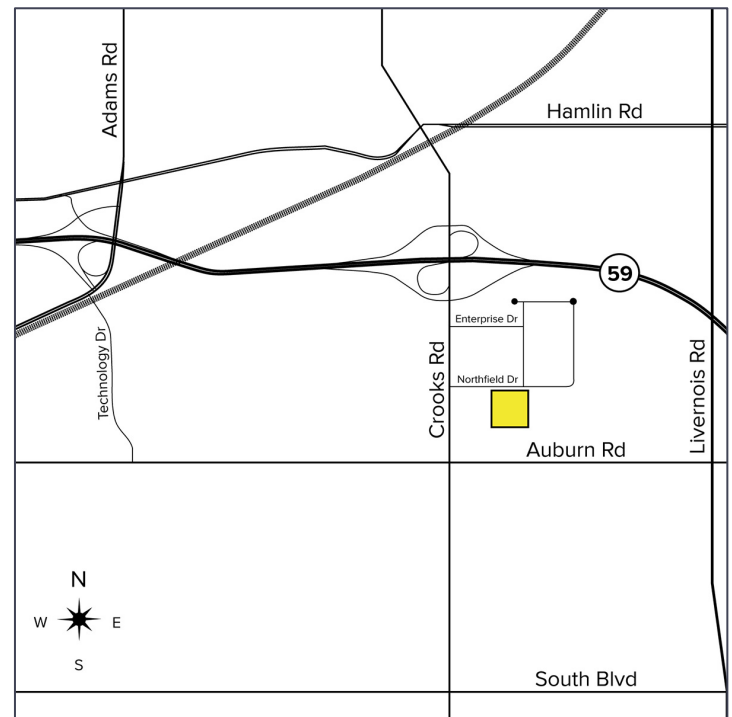
**SIGNATURE  
ASSOCIATES**  
KNOW SIGNATURE | KNOW RESULTS

**TAN INDUSTRIAL PARK**



## PROPERTY FEATURES

- 5,600 - 7,412 square feet available
- 800 - 1,200 square feet office
- 16' clear height
- (1) 12'x14' grade level door per unit
- 600 amps, 240/480 volts power
- Very nice and clean unit
- Quick access to M-59 and I-75
- Drive-through capability
- Two private offices
- Tenant Responsibility: Taxes, insurance, CAM: \$2.45/sq. ft.
- Lease Rate: \$10.50/sq. ft. NNN



For more information, please contact:

**KRIS PAWLOWSKI**

(248) 359 3801

kpawlowski@signatureassociates.com

**PAUL HOGE**

(248) 948 0103

paulhoge@signatureassociates.com

**SIGNATURE ASSOCIATES**

One Towne Square, Suite 1200

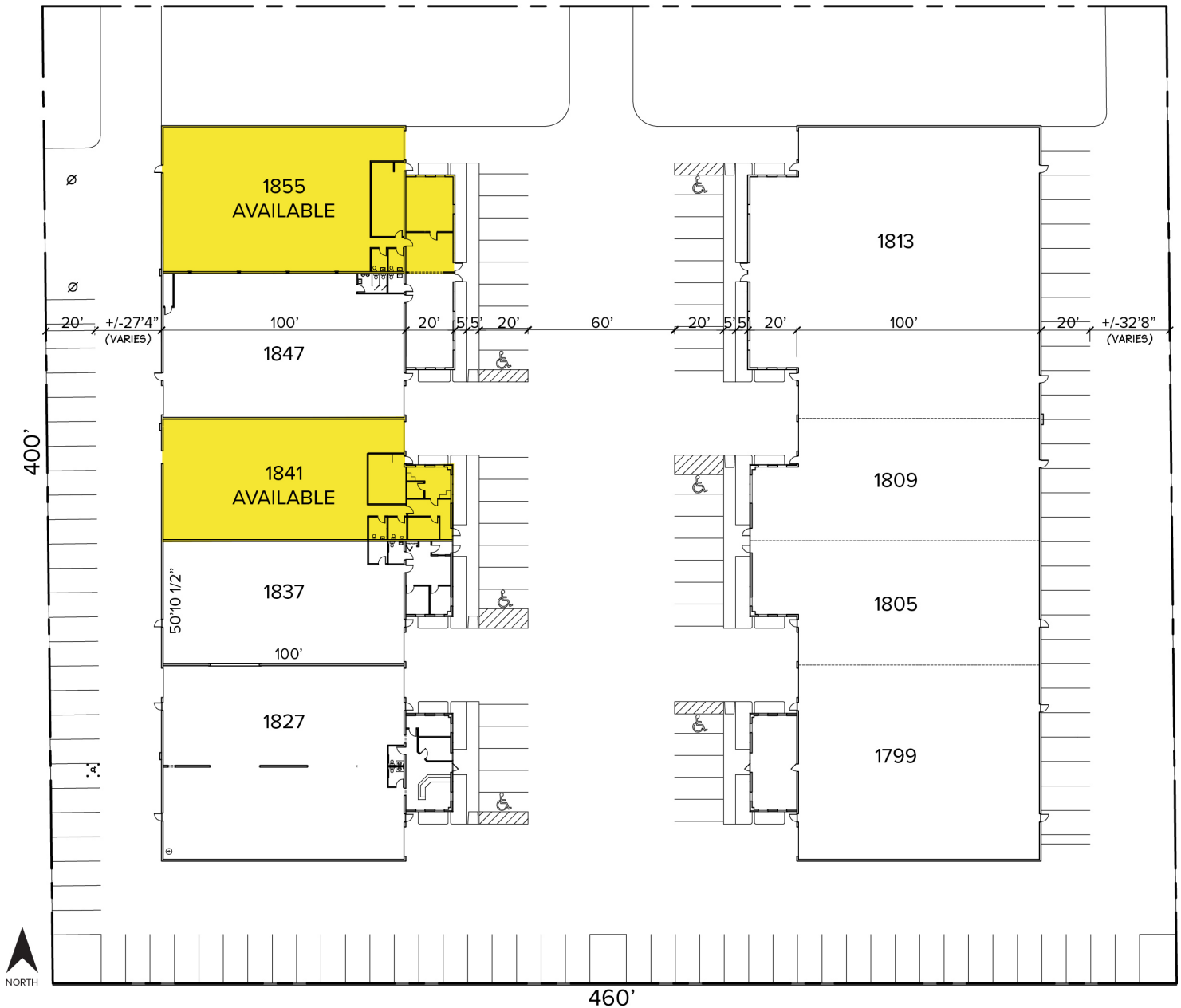
Southfield, MI 48076

www.signatureassociates.com

### Site Plan

AVAILABILITY		
UNIT	TOTAL SF	OFFICE SF
1841	5,600	800
1855	7,412	1,200

#### NORTHFIELD DRIVE



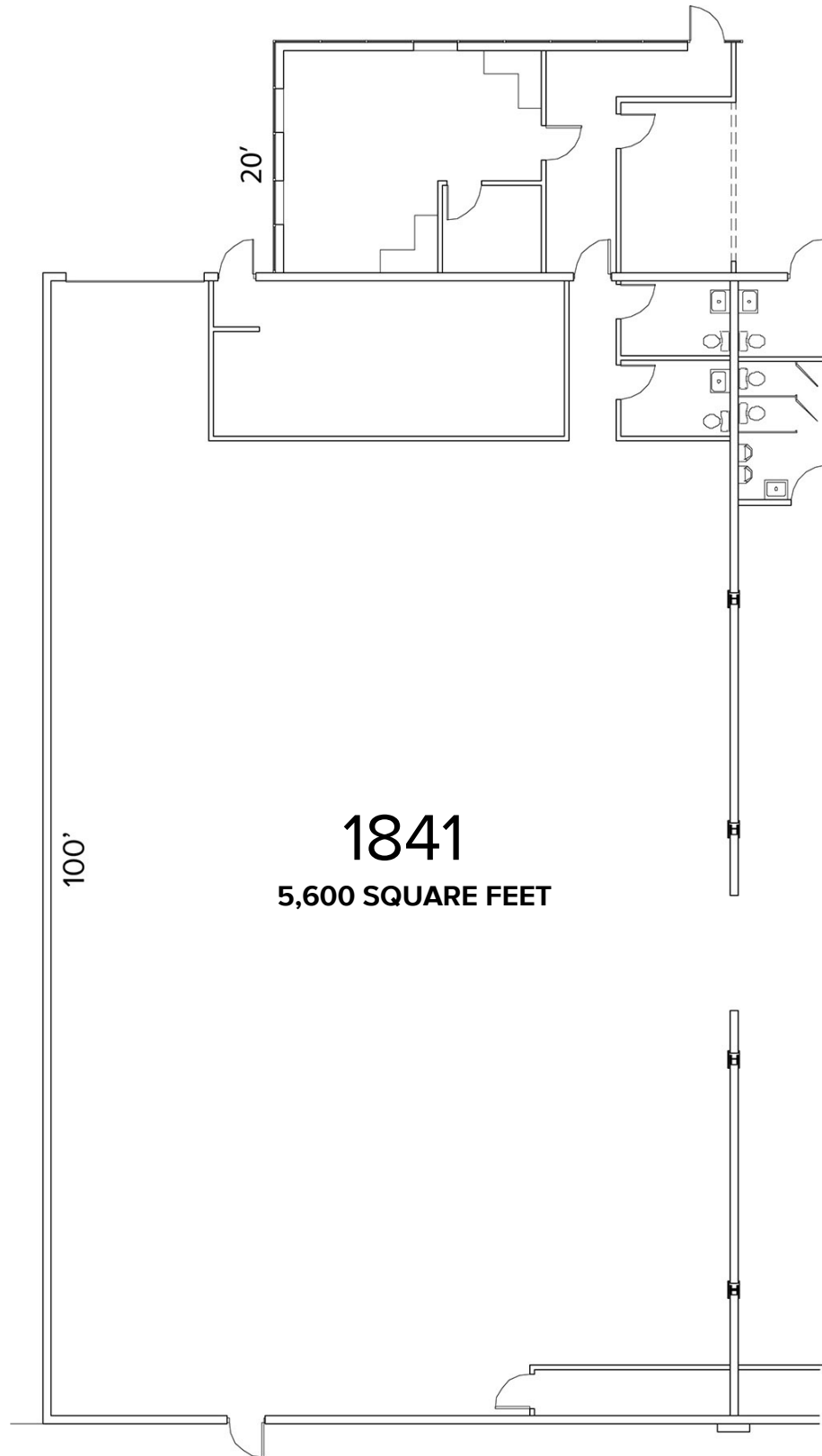
For more information, please contact:

**KRIS PAWLOWSKI**  
(248) 359 3801  
kpawlowski@signatureassociates.com

**PAUL HOGE**  
(248) 948 0103  
paulhoge@signatureassociates.com

**SIGNATURE ASSOCIATES**  
One Towne Square, Suite 1200  
Southfield, MI 48076  
www.signatureassociates.com

Floor Plan



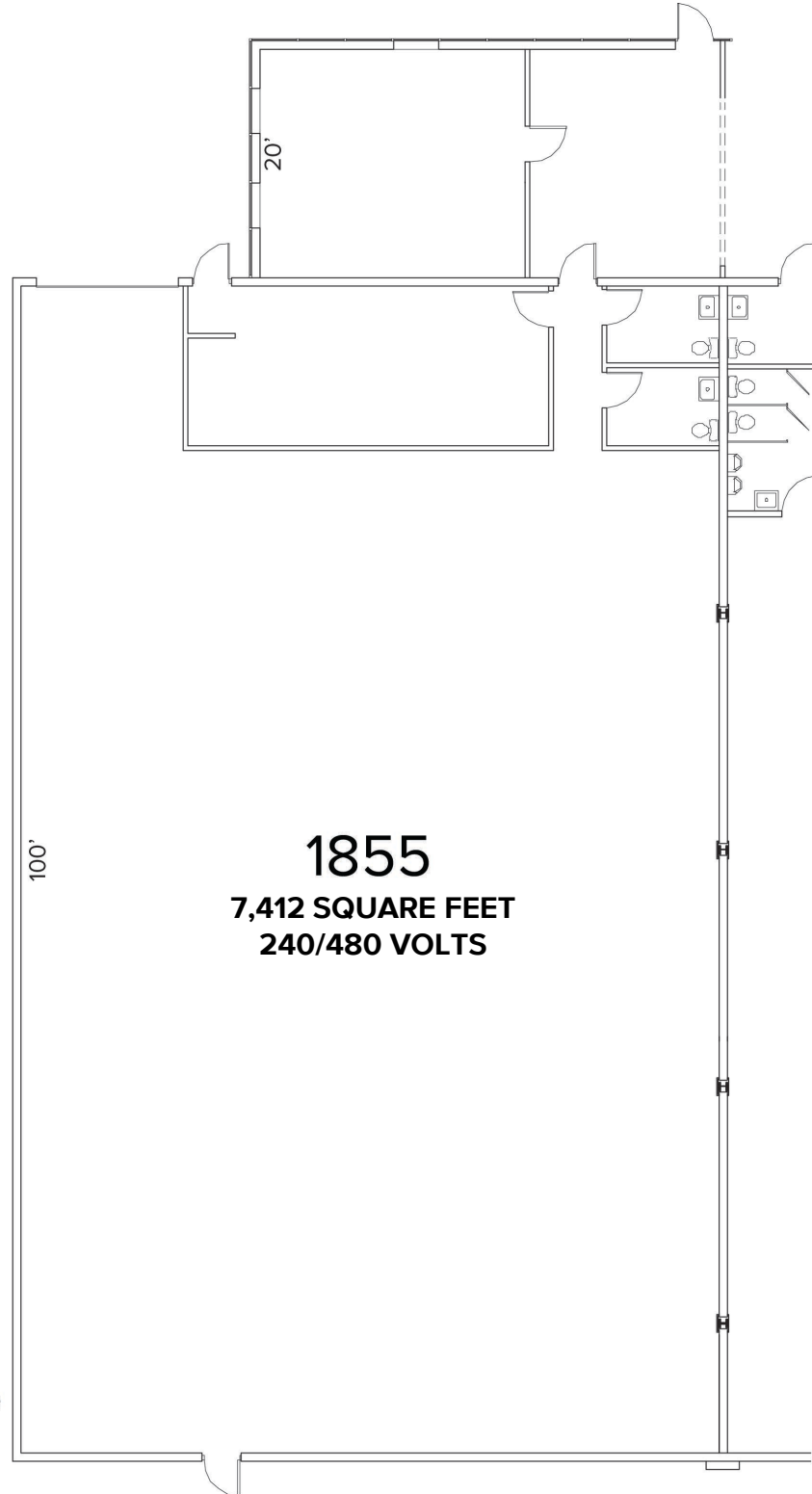
For more information, please contact:

**KRIS PAWLOWSKI**  
(248) 359 3801  
kpawlowski@signatureassociates.com

**PAUL HOGE**  
(248) 948 0103  
paulhoge@signatureassociates.com

**SIGNATURE ASSOCIATES**  
One Towne Square, Suite 1200  
Southfield, MI 48076  
www.signatureassociates.com

Floor Plan



For more information, please contact:

**KRIS PAWLOWSKI**  
(248) 359 3801  
kpawlowski@signatureassociates.com

**PAUL HOGE**  
(248) 948 0103  
paulhoge@signatureassociates.com

**SIGNATURE ASSOCIATES**  
One Towne Square, Suite 1200  
Southfield, MI 48076  
www.signatureassociates.com

1827-1855 Northfield Dr. Unit – Rochester Hills, MI  
Industrial For Lease

5,600 - 7,412  
Square Feet  
AVAILABLE

Aerial



For more information, please contact:

**KRIS PAWLOWSKI**  
(248) 359 3801  
kpawlowski@signatureassociates.com

**PAUL HOGE**  
(248) 948 0103  
paulhoge@signatureassociates.com

**SIGNATURE ASSOCIATES**  
One Towne Square, Suite 1200  
Southfield, MI 48076  
www.signatureassociates.com