

volume

+

light

+

character

neckinger mills
162-164 abbey street
bermondsey se1

for rent or sale

c.2,200 sq ft

stylish self contained ground
floor office unit with car
parking within a former
victorian factory



www.pilcher.london | 020 7399 8600

● neckinger mills, 162-164 abbey street, bermondsey



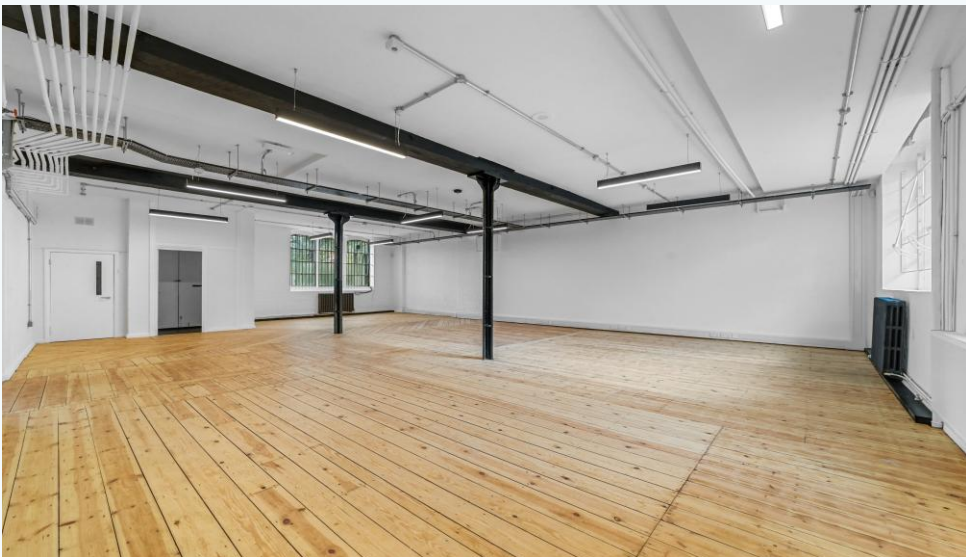
accomodation:

this self contained unit, full of volume, light and character with original features is arranged on the ground floor of neckinger mills which is a brick-built, former victorian factory. the building now comprises this cool office space - c.2,200 sq ft

location:

the property is located on abbey street, close to the junction of jamiaca road, which is in the heart of bermondsey. bermondsey underground station (jubilee line) is within a 5 minute walking distance

● neckinger mills, 162-164 abbey street, bermondsey



PILCHER ● LONDON

www.pilcher.london | 0207399 8600

● neckinger mills, 162-164 abbey street, bermondsey

amenities:

- recently refurbished
- self contained
- original warehouse factory
- good natural light
- generous floor to ceiling height
- car parking
- solid wood flooring throughout
- wooden beams
- steel columns
- demised wcs
- led, track lighting throughout

terms:

for rent – c.£32.50 psf pax

or

for sale - 999 year lease at nil ground rent

price - c.£1.15m subject to contract

outgoings:

rates - c.£8.45 psf pa

service charge - £6,500 pa + vat

one of the partners at pilcher london has an interest in this property

PILCHER ● LONDON

bespoke commercial property consultants



taylor rosen

07834 789 346

taylorrosen@pilcher.london

neckinger mills, 162-164 abbey street, bermondsey