

6-Bay Multi-Tenant Industrial Building For Lease

13928 Lincoln Street NE, Ham Lake, MN

AVAILABLE SPACE

- 6-Bay multi-tenant building
- Total building size 22,000 SF
- Bay size 36' W x 100' Deep
 - Totaling 3,699 RSF / bay
- Drive-in loading each bay (14' x 14')
- Great access off Hwy 65
- Coming Summer of 2025

PROPERTY DETAILS

Lease Rate \$6.50 / RSF
Estimated CAM / Tax (2025)
\$3.50 / SF

FOR MORE INFORMATION, CONTACT

Marty Fisher / Mike Fisher

763-862-2005

mfisher@premiercommercialproperties.com

mikefisher@premiercommercialproperties.com



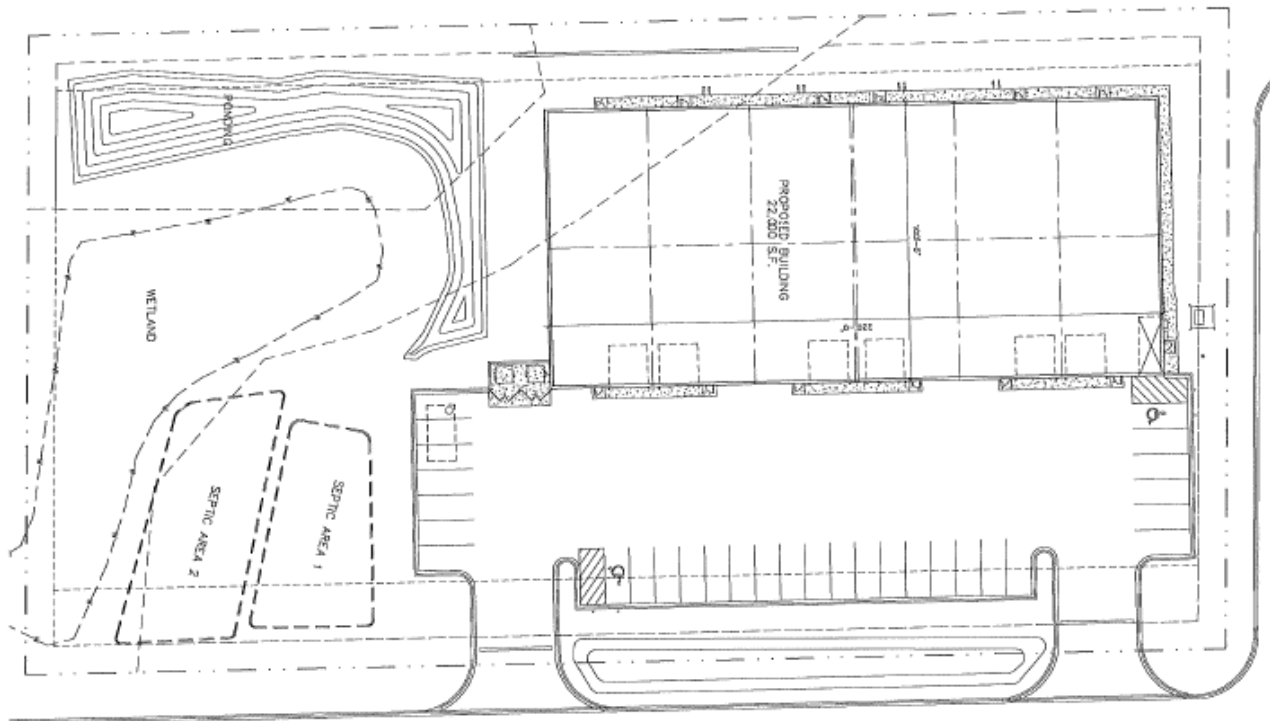
PREMIER
COMMERCIAL
PROPERTIES

FOR LEASE

CONTACT: Marty Fisher

MOBILE: 612-708-2873

EMAIL: mfisher@premiercommercialproperties.com



LINCOLN STREET N.E.

Access to Lincoln Street via Bunker Lake Boulevard



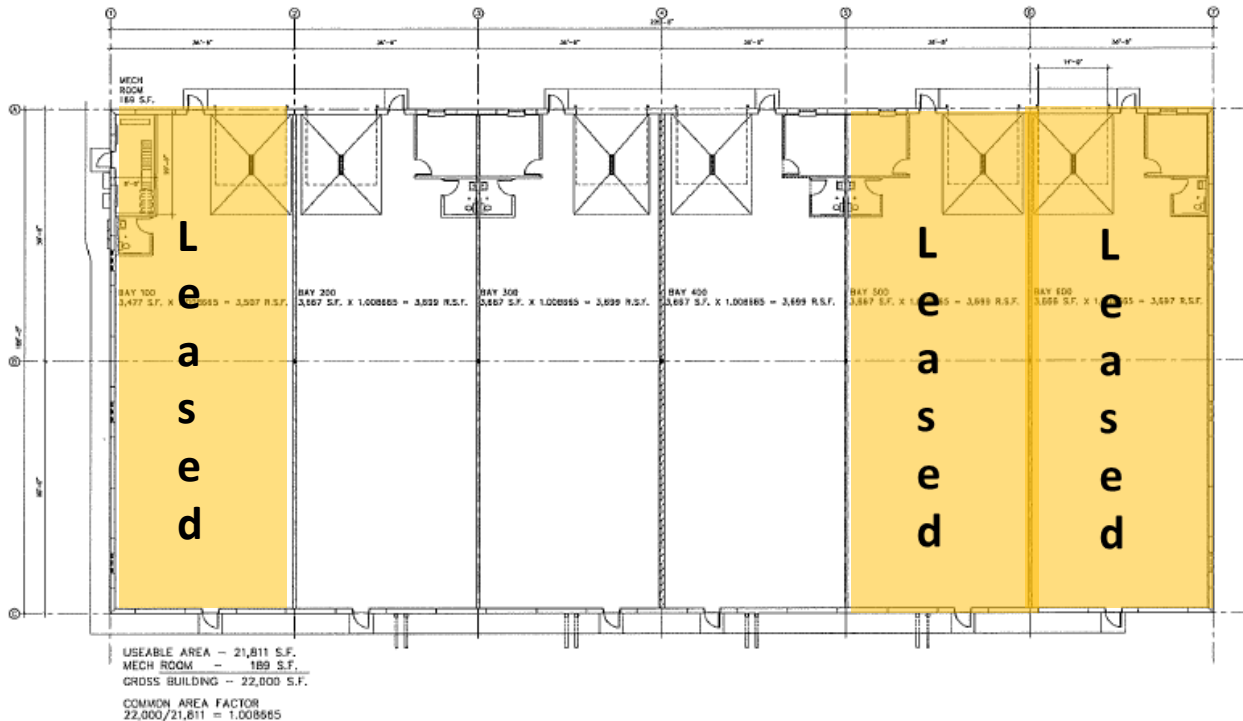
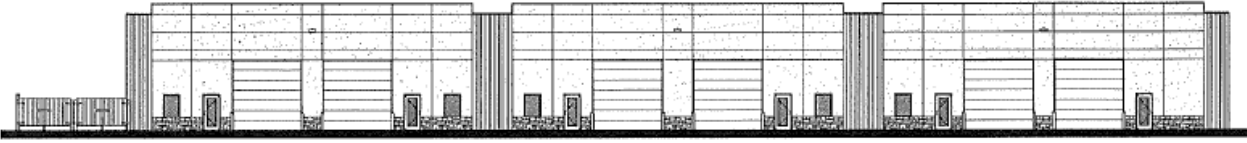
PREMIER
COMMERCIAL
PROPERTIES

FOR LEASE

CONTACT: Marty Fisher

MOBILE: 612-708-2873

EMAIL: mfisher@premiercommercialproperties.com



- Bay size approx. 36' wide x 100' deep
- 3,699 RSF / bay
- Drive-in loading (14' x 14' door)
- Light industrial zoning (City of Ham Lake)
- 18' clear height
- Floor drains in each bay
- 200 Amp 120/208 3 – phase / bay
- Comes with ADA Unisex bathroom and LED lighting



PREMIER
COMMERCIAL
PROPERTIES

FOR LEASE

CONTACT: Marty Fisher

MOBILE: 612-708-2873

EMAIL: mfisher@premiercommercialproperties.com

