

**FOR LEASE**  
**18,837 SF - 42,426 SF**  
**AVAILABLE**



# For Lease | 18,837 SF - 42,426 SF

2707 N Garey Ave, Pomona, CA 91767

Clear Span Buildings

---

## PROPERTY

Bldg. 1 = 23,589 SF

Bldg. 2 = 18,837 SF

Total = 42,426 SF

## AVAILABLE

NOW

**Wesley Sherburne**

C: 949.322.4043

[wesley@hrs-commercial.com](mailto:wesley@hrs-commercial.com)

License 02042855

**Matt Sherburne**

C: 949.525.8062

[matt@hrs-commercial.com](mailto:matt@hrs-commercial.com)

License 02061641



COMMERCIAL ADVISORY

[hrs-commercial.com](http://hrs-commercial.com)

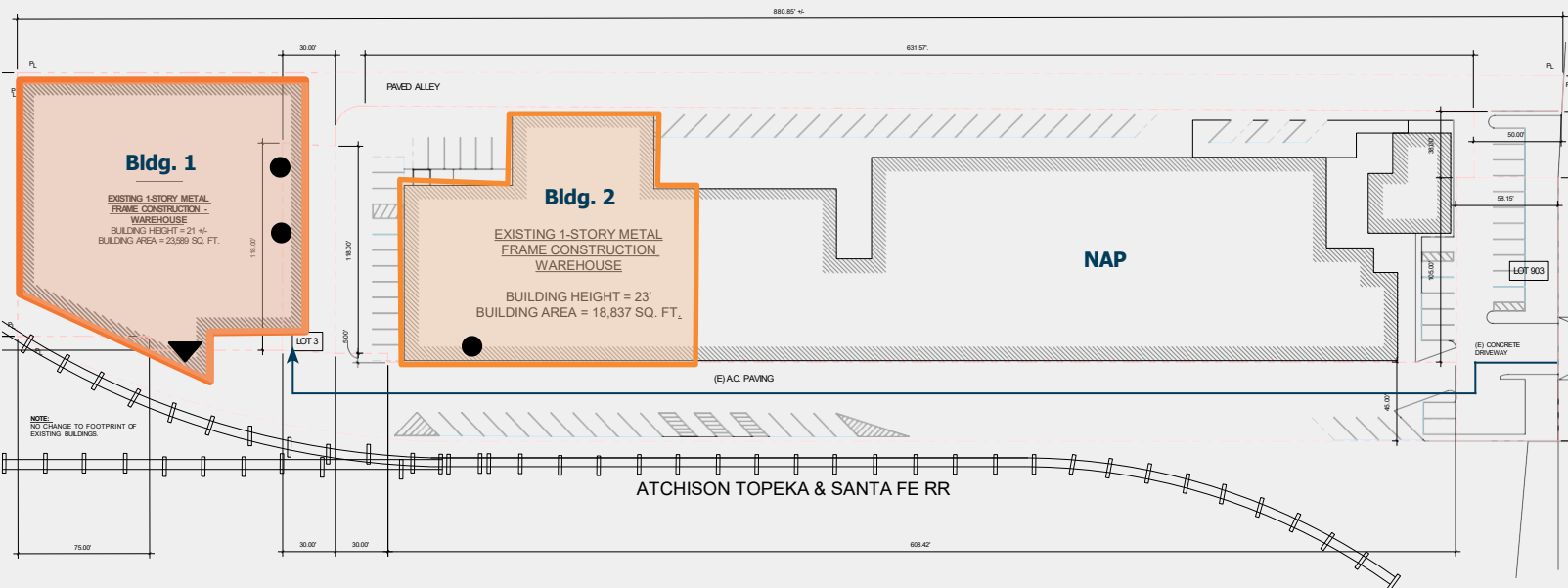
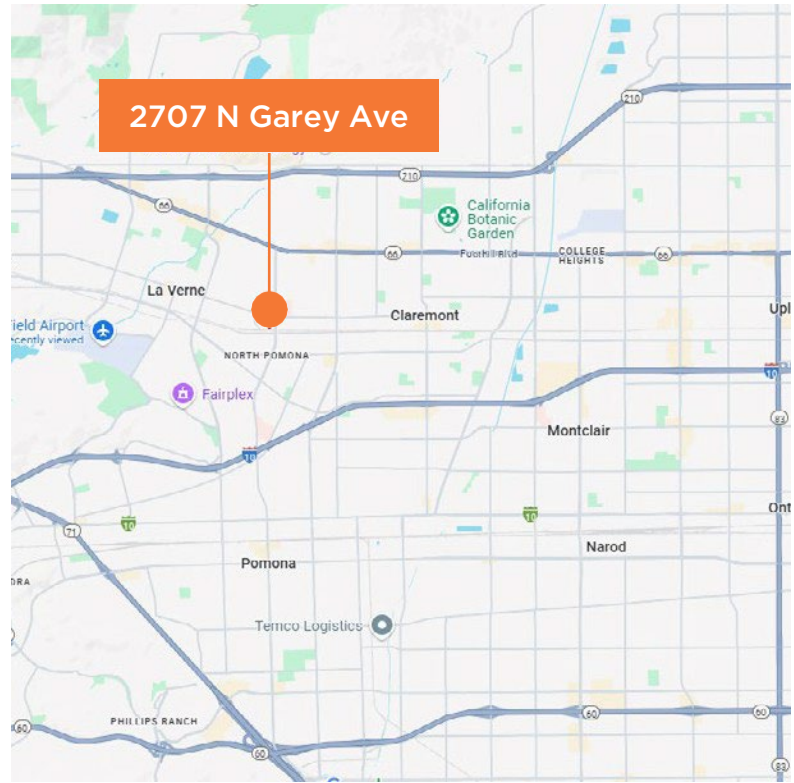
# Site Plan

2707 N GAREY AVE,  
POMONA, CA 91767

## PROPERTY HIGHLIGHTS

	BUILDING 1	BUILDING 2	TOTAL
SF	23,589	18,837	42,426
CLEAR	21'	23'	—
DH	1	0	1
GL	2	1	3

- New Exterior and Interior paint
- New Warehouse Lighting
- Heavy Power - 2,000 Amps (Verify)
- Fully Sprinklered
- Immediate Access to I-10 & I-210
- Fenced + Secured Gated Site



- ▼ - Dock High
- - Grade Level

# Site Access

2707 N GAREY AVE,  
POMONA, CA 91767

## AIRPORTS

**Ontario International**  
±11 Miles/17 minutes

**Los Angeles**  
±47.8 Miles / 37 minutes

**Orange County**  
±21.5 Miles / 45 minutes

## PORTS

**Los Angeles**  
±48.1 Miles / 66 minutes

**Long Beach**  
±50.4 Miles / 72 minutes

## FREEWAYS

**CA-66**  
±1.2 Miles / 4 minutes

**CA-10**  
±1.7 Miles / 6 minutes

**CA-210**  
±3.8 Miles / 9 minutes



**Wesley Sherburne**

C: 949.322.4043

[wesley@hrs-commercial.com](mailto:wesley@hrs-commercial.com)

License O2042855

**Matt Sherburne**

C: 949.525.8062

[matt@hrs-commercial.com](mailto:matt@hrs-commercial.com)

License O2061641



COMMERCIAL ADVISORY

[hrs-commercial.com](http://hrs-commercial.com)