

**±64,080 SF
AVAILABLE
FOR LEASE**



INTERWOOD BUSINESS CENTER

14445 HEATHROW FOREST PARKWAY
HOUSTON, TX 77032

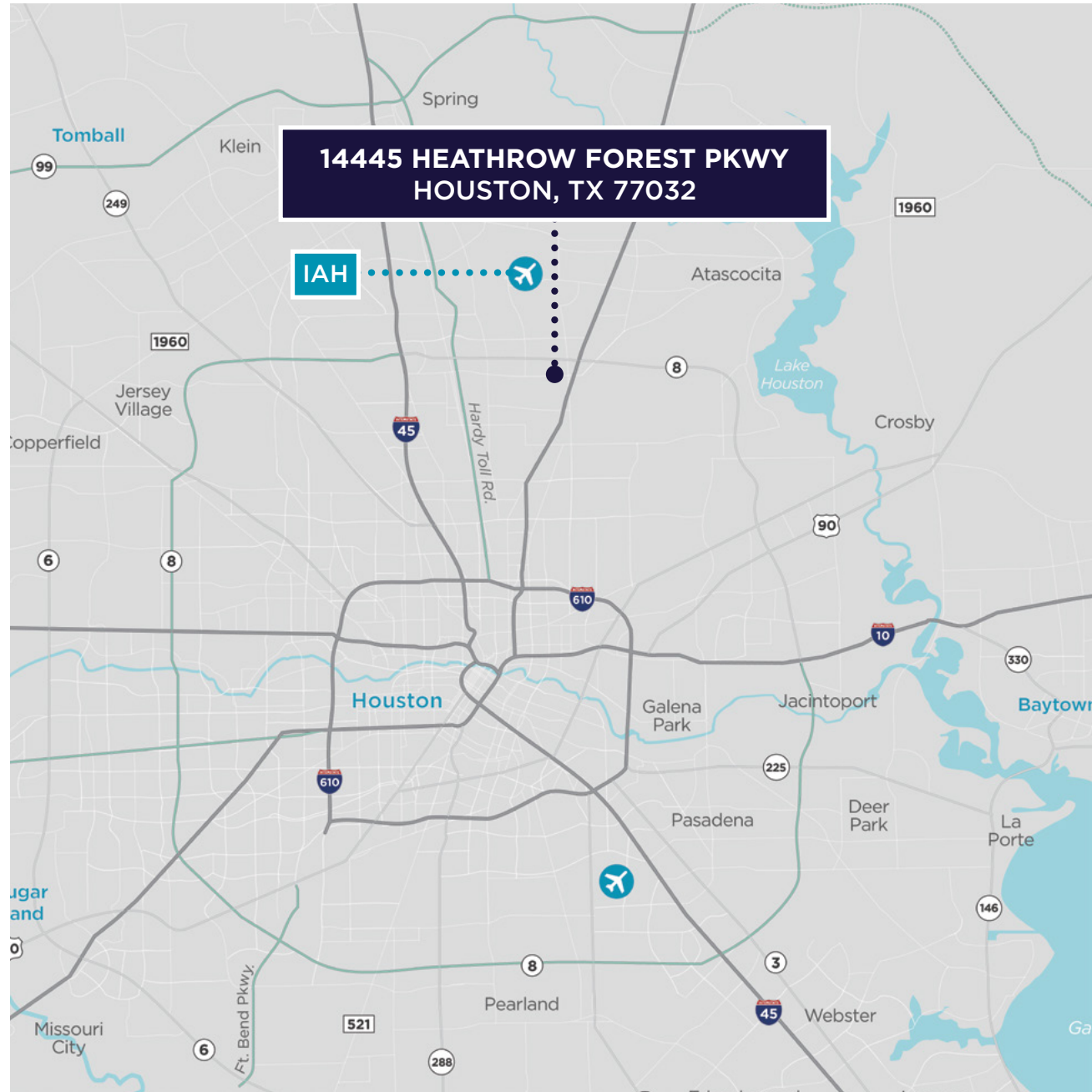


INTERWOOD BUSINESS CENTER

14445 HEATHROW FOREST PARKWAY
HOUSTON, TX 77032

PROPERTY INFORMATION

- ±64,080 SF Available SF
- ±6,650 SF Office A
- ±1,395 SF Office B
- ±56,035 SF Warehouse
- Front Load
- 24' Clear
- (14) Dock High Doors
- (3) Drive-in Doors
- Oversized Ramp
- 75+ Car Parks
- 190' Shared Truck Court
- ±10,000 SF IOS
- Sprinkler System
- Concrete Tilt-Wall Construction
- 40' x 42' Column Spacing
- 3 HVLS Warehouse Fans
- One (1) Mile South of George Bush Intercontinental (IAH) Airport
- Located within Master-Planned & Deed Restricted Interwood Business Park
- Available July 2026

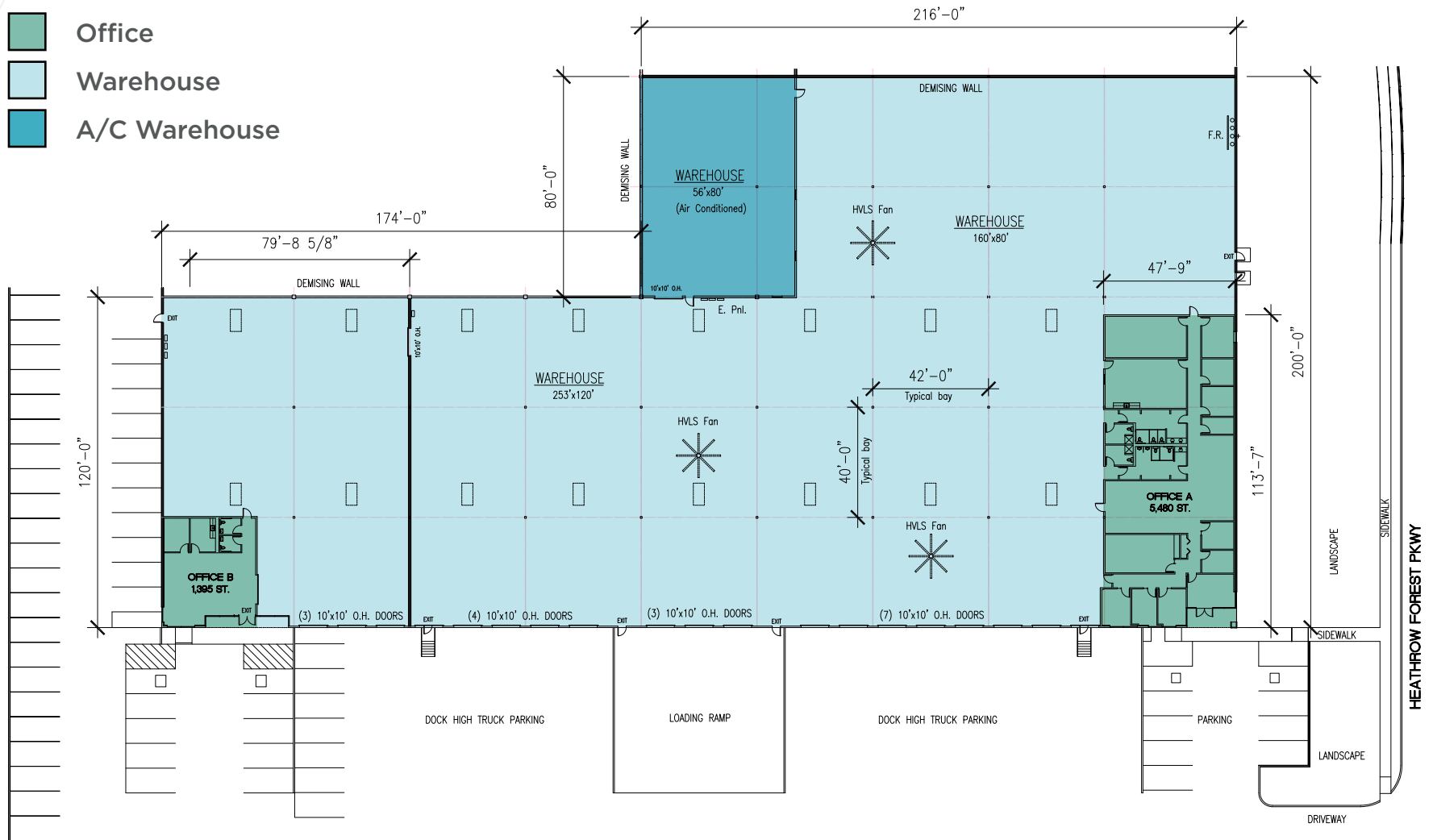


INTERWOOD BUSINESS CENTER

14445 HEATHROW FOREST PARKWAY
HOUSTON, TX 77032

FLOOR PLAN

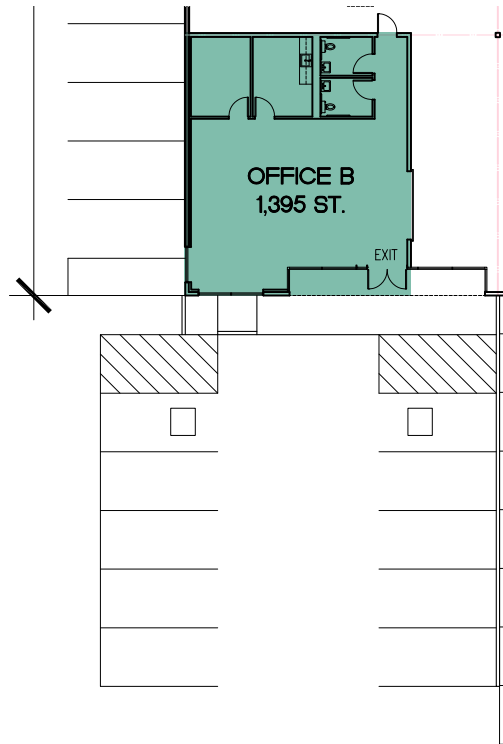
- Office
- Warehouse
- A/C Warehouse



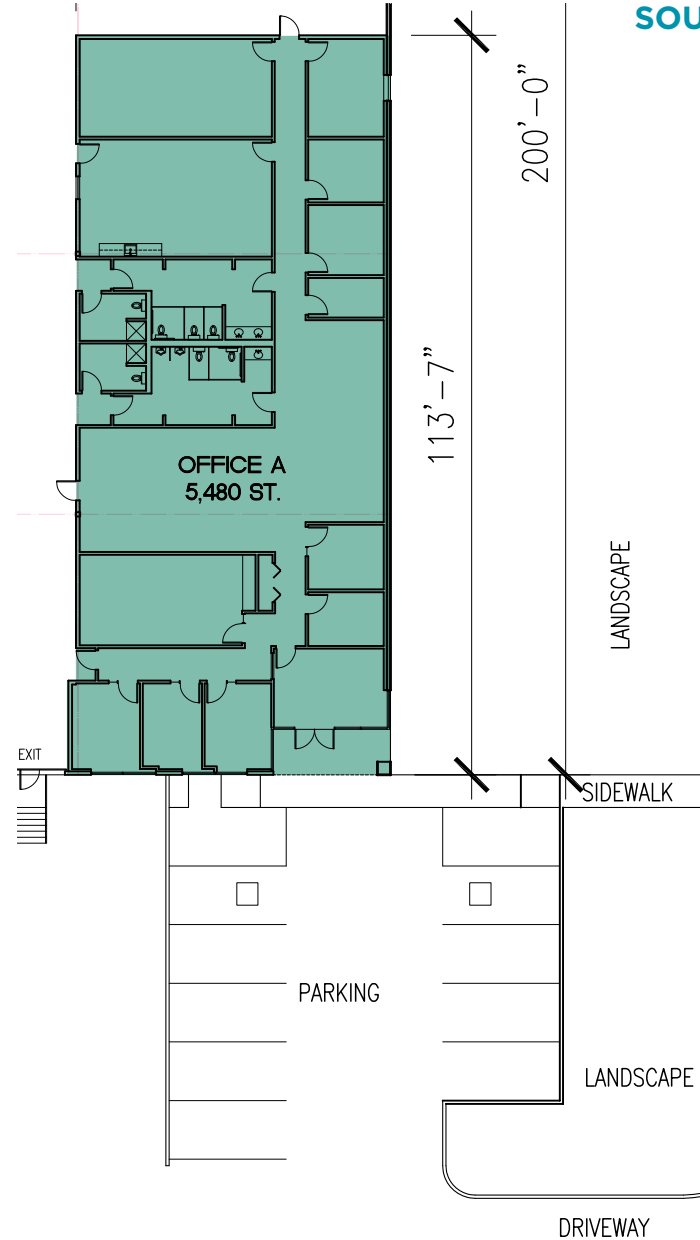
INTERWOOD BUSINESS CENTER

14445 HEATHROW FOREST PARKWAY
HOUSTON, TX 77032

OFFICE PLANS



NORTH OFFICE



SOUTH OFFICE

INTERWOOD BUSINESS CENTER

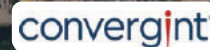
14445 HEATHROW FOREST PARKWAY
HOUSTON, TX 77032

CORPORATE NEIGHBORS



8

N Sam Houston Pkwy E



John F Kennedy Blvd



Interwood North Pkwy



Aeropark Dr



Interwood South Pkwy



Heathrow Forest Pkwy



Aldine Bender Rd

Aldine Bender Rd

INTERWOOD
BUSINESS
CENTER



Heathrow Forest Pkwy





GEORGE BUSH
INTERCONTINENTAL
AIRPORT (IAH)
1 MILE

64,080 SF

Aldine-Bender Rd

John F Kennedy Blvd

Heathrow Forest Pkwy

FOR MORE INFORMATION, CONTACT:

JOHN KRUSE
Managing Director
Direct: +1 281 688 9234
Mobile: +1 713 304 4919
john.kruse@cushwake.com

1330 Post Oak Blvd.
Houston, Texas 77056
+1 713 877 1700
cushmanwakefield.com

©2026 Cushman & Wakefield. All rights reserved. The information contained in this communication is strictly confidential. This information has been obtained from sources believed to be reliable but has not been verified. NO WARRANTY OR REPRESENTATION, EXPRESS OR IMPLIED, IS MADE AS TO THE CONDITION OF THE PROPERTY (OR PROPERTIES) REFERENCED HEREIN OR AS TO THE ACCURACY OR COMPLETENESS OF THE INFORMATION CONTAINED HEREIN, AND SAME IS SUBMITTED SUBJECT TO ERRORS, OMISSIONS, CHANGE OF PRICE, RENTAL OR OTHER CONDITIONS, WITHDRAWAL WITHOUT NOTICE, AND TO ANY SPECIAL LISTING CONDITIONS IMPOSED BY THE PROPERTY OWNER(S). ANY PROJECTIONS, OPINIONS OR ESTIMATES ARE SUBJECT TO UNCERTAINTY AND DO NOT SIGNIFY CURRENT OR FUTURE PROPERTY PERFORMANCE. PD-191045-V1

