

# Piccadilly Plaza

*The Premier Retail Center at the Gateway to Worcester*  
*Signalized Access on Shrewsbury St and Belmont St (Route 9)*  
*Opposite UMASS Medical Center, Biotech Center, and McDonald's*  
*490 Shrewsbury Street, Worcester, MA*  
***1,000 SF - 2,000 SF Endcap Available***

- Premier retail destination at the gateway to Downtown Worcester
- 2 signalized curb cuts with excellent ingress/egress at Shrewsbury St. and Belmont St. (Rt. 9)
- Best parking ratio in the city
- Exceptional storefront visibility and pylon signage
- Traffic counts : Shrewsbury St. - 22,500+ ADT  
Belmont St. - 30,000+ ADT
- Strong daytime population driven by Worcester's medical and biotech corridor
- Tropeiro's Grill Brazilian Steakhouse recently opened
- Opposite UMASS Medical Campus and Biotech Center



# Piccadilly Plaza

490 Shrewsbury Street | Worcester, MA

## Retail Market



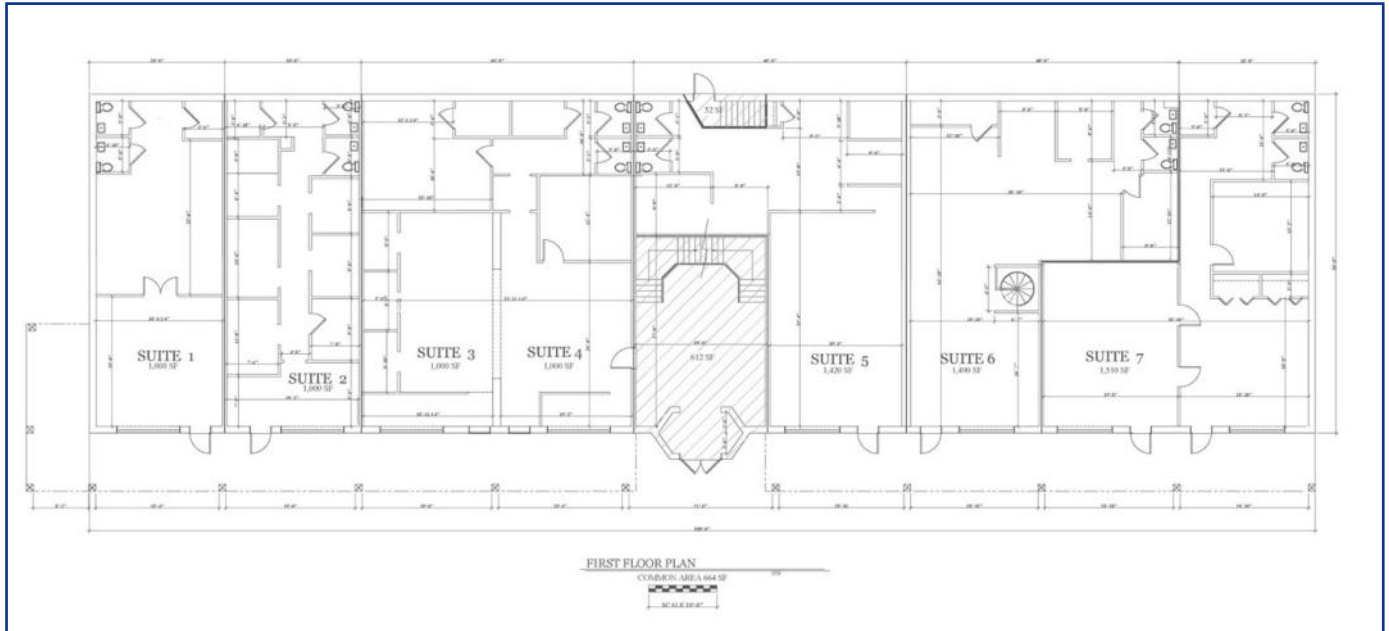
With over 390,000 residents and an average household income exceeding \$110,000 within 10 miles, the trade area delivers exceptional spending power and employment density.

2025 Demographics	1 Mile	3 Mile	5 Mile
Population	13,806	144,163	256,652
Households	6,084	57,426	100,068
Daytime Employees	18,455	98,301	133,820
Average Household Income	\$84,471	\$90,441	\$106,887

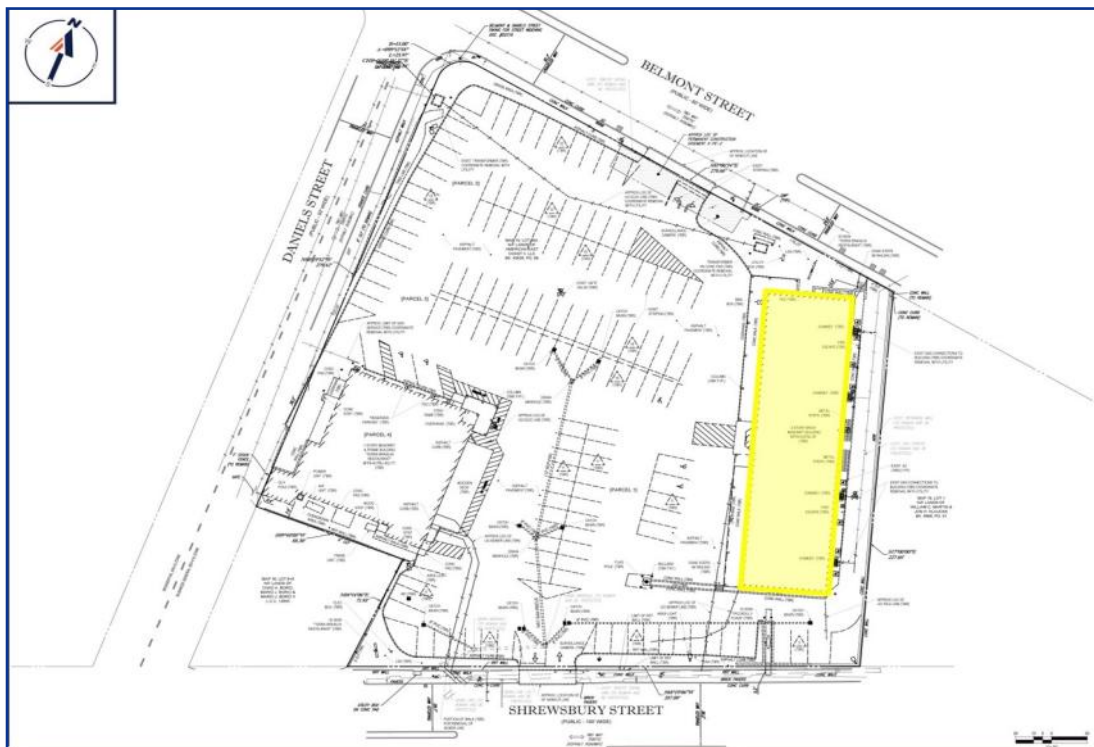
# Piccadilly Plaza

490 Shrewsbury Street | Worcester, MA

## Ground-Level Floor Plan



## Site Plan



## Piccadilly Plaza

490 Shrewsbury Street | Worcester, MA



### Contact Us



**Dusty Burke III**  
 508-735-5976  
[dusty3@acreco.com](mailto:dusty3@acreco.com)



**Dusty Burke**  
 508-735-6378  
[dusty@acreco.com](mailto:dusty@acreco.com)



#### American Commercial Real Estate

11 Apex Drive, Suite 300A #200, Marlborough, Massachusetts 01752  
 Tel: (508) 735-6378 | Email: [dusty@acreco.com](mailto:dusty@acreco.com) | [www.acreco.com](http://www.acreco.com)