

**FOR LEASE**

**@Clarion Plaza**

**NAI Capital**

COMMERCIAL REAL ESTATE SERVICES, WORLDWIDE

**HAIR SALON**  
ALL SERVICE



499

WAX  
COLOR



501



**501 N Ventu Park Rd**  
Newbury Park, CA 91320

**Evelyn Hamilton**

818.742.1646

ehamilton@naicapital.com

CA DRE #01925029

**Mickey Belt**

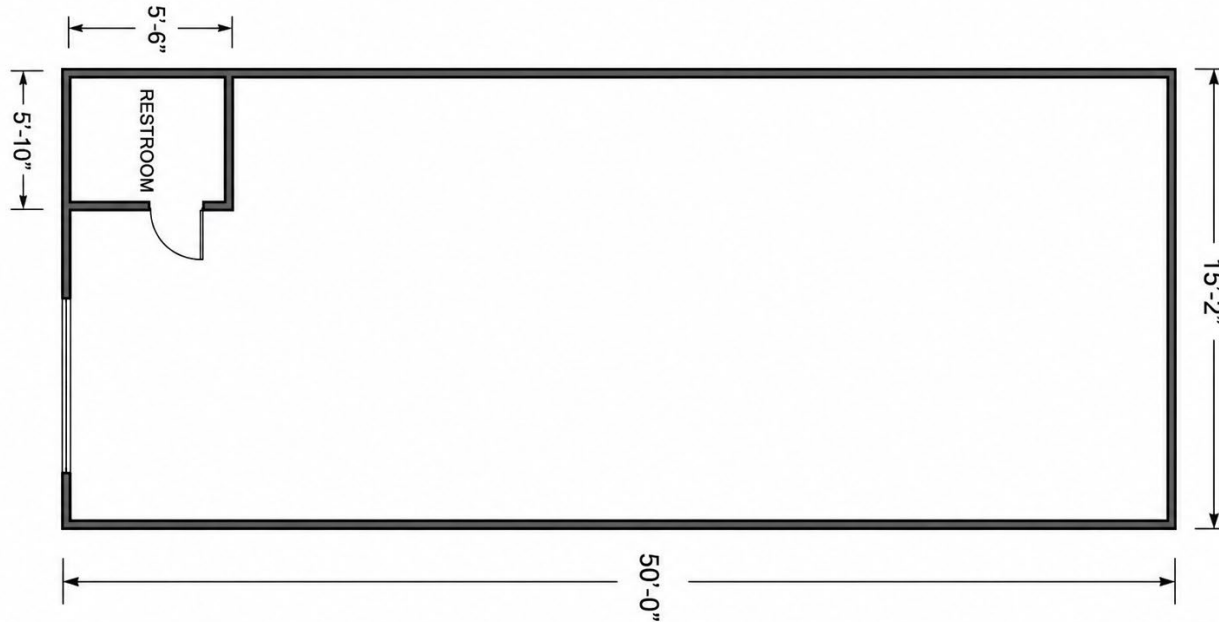
818.468.4189

mbelt@naicapital.com

CA DRE #00697813

No warranty, express or implied, is made as to the accuracy of the information contained herein. This information is submitted subject to errors, omissions, change of price, rental or other conditions, withdrawal without notice, and is subject to any special listing conditions imposed by our principals. Cooperating brokers, buyers, tenants and other parties who receive this document should not rely on it, but should use it as a starting point of analysis, and should independently confirm the accuracy of the information contained herein through a due diligence review of the books, records, files and documents that constitute reliable sources of the information described herein. Logos are for identification purposes only and may be trademarks of their respective companies. NAI Capital Commercial, Inc. CAL DRE Lic. #02130474

**CLARION PLAZA**  
 501 N Ventu Park Rd, Newbury Park, CA 91320



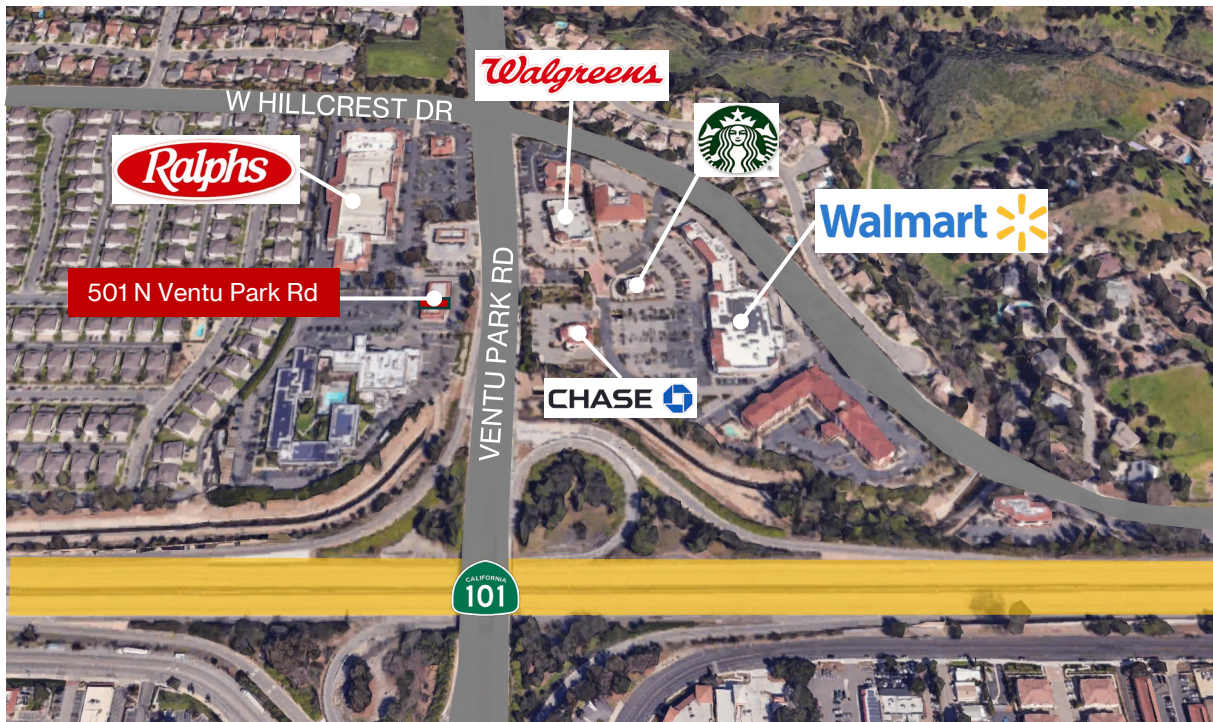
FLOOR	UNIT	SIZE	RATE	AVAILABILITY
1	501	835 RSF	\$2.50/SF, NNN	VACANT

**Evelyn Hamilton**  
 818.742.1646  
 ehamilton@naicapital.com  
 CA DRE #01925029

**Mickey Belt**  
 818.468.4189  
 mbelt@naicapital.com  
 CA DRE #00697813

No warranty, express or implied, is made as to the accuracy of the information contained herein. This information is submitted subject to errors, omissions, change of price, rental or other conditions, withdrawal without notice, and is subject to any special listing conditions imposed by our principals. Cooperating brokers, buyers, tenants and other parties who receive this document should not rely on it, but should use it as a starting point of analysis, and should independently confirm the accuracy of the information contained herein through a due diligence review of the books, records, files and documents that constitute reliable sources of the information described herein. Logos are for identification purposes only and may be trademarks of their respective companies. NAI Capital Commercial, Inc. CAL DRE Lic. #02130474

Located in the heart of Newbury Park with prime frontage along N. Ventu Park Rd. This highly visible location offers exceptional accessibility and exposure, directly across the street from Walmart and Walgreens, and adjacent to Ralphs. Surrounded by strong national retailers and steady daily traffic, the property is ideally positioned for a variety of retail, office, or service-oriented uses.



## UNIT FEATURES

- ❑ Great frontage along North Ventu Park Road
- ❑ Prominent signage opportunity
- ❑ Strong daytime and residential population in the surrounding area
- ❑ Located within an established neighborhood commercial center
- ❑ Convenient access to the Ventura (101) Freeway

**Evelyn Hamilton**

818.742.1646

[ehamilton@naicapital.com](mailto:ehamilton@naicapital.com)

CA DRE #01925029

**Mickey Belt**

818.468.4189

[mbelt@naicapital.com](mailto:mbelt@naicapital.com)

CA DRE #00697813

No warranty, express or implied, is made as to the accuracy of the information contained herein. This information is submitted subject to errors, omissions, change of price, rental or other conditions, withdrawal without notice, and is subject to any special listing conditions imposed by our principals. Cooperating brokers, buyers, tenants and other parties who receive this document should not rely on it, but should use it as a starting point of analysis, and should independently confirm the accuracy of the information contained herein through a due diligence review of the books, records, files and documents that constitute reliable sources of the information described herein. Logos are for identification purposes only and may be trademarks of their respective companies. NAI Capital Commercial, Inc. CAL DRE Lic. #02130474

CLARION PLAZA  
501 N Ventu Park Rd, Newbury Park, CA 91320

**NAI**Capital  
COMMERCIAL REAL ESTATE SERVICES, WORLDWIDE

Storefront Facing  
N Ventu Park Rd



**Evelyn Hamilton**  
818.742.1646  
ehamilton@naicapital.com  
CA DRE #01925029

**Mickey Belt**  
818.468.4189  
mbelt@naicapital.com  
CA DRE #00697813

No warranty, express or implied, is made as to the accuracy of the information contained herein. This information is submitted subject to errors, omissions, change of price, rental or other conditions, withdrawal without notice, and is subject to any special listing conditions imposed by our principals. Cooperating brokers, buyers, tenants and other parties who receive this document should not rely on it, but should use it as a starting point of analysis, and should independently confirm the accuracy of the information contained herein through a due diligence review of the books, records, files and documents that constitute reliable sources of the information described herein. Logos are for identification purposes only and may be trademarks of their respective companies. NAI Capital Commercial, Inc. CAL DRE Lic. #02130474