

## **SKEES ROAD INDUSTRIAL PARK**



### **1,500 SF OFFICE / WAREHOUSE FOR LEASE 1426 SKEES ROAD, UNIT D WEST PALM BEACH, FL 33411**

**Zoning:** Industrial  
**Property Type:** Office /Warehouse  
**Space Available:** 1,500 SF  
**Min Divisible:** 1,500 SF  
**Lease Type:** NNN

**CALL FOR PRICING !**



This unit features approximately 50% office buildout, including a professional storefront entrance, open reception area, kitchenette area, and three private offices. The warehouse space consists of a 14' x 14' overhead door and 18' clear ceiling height, providing excellent functionality for a variety of industrial or flex uses.

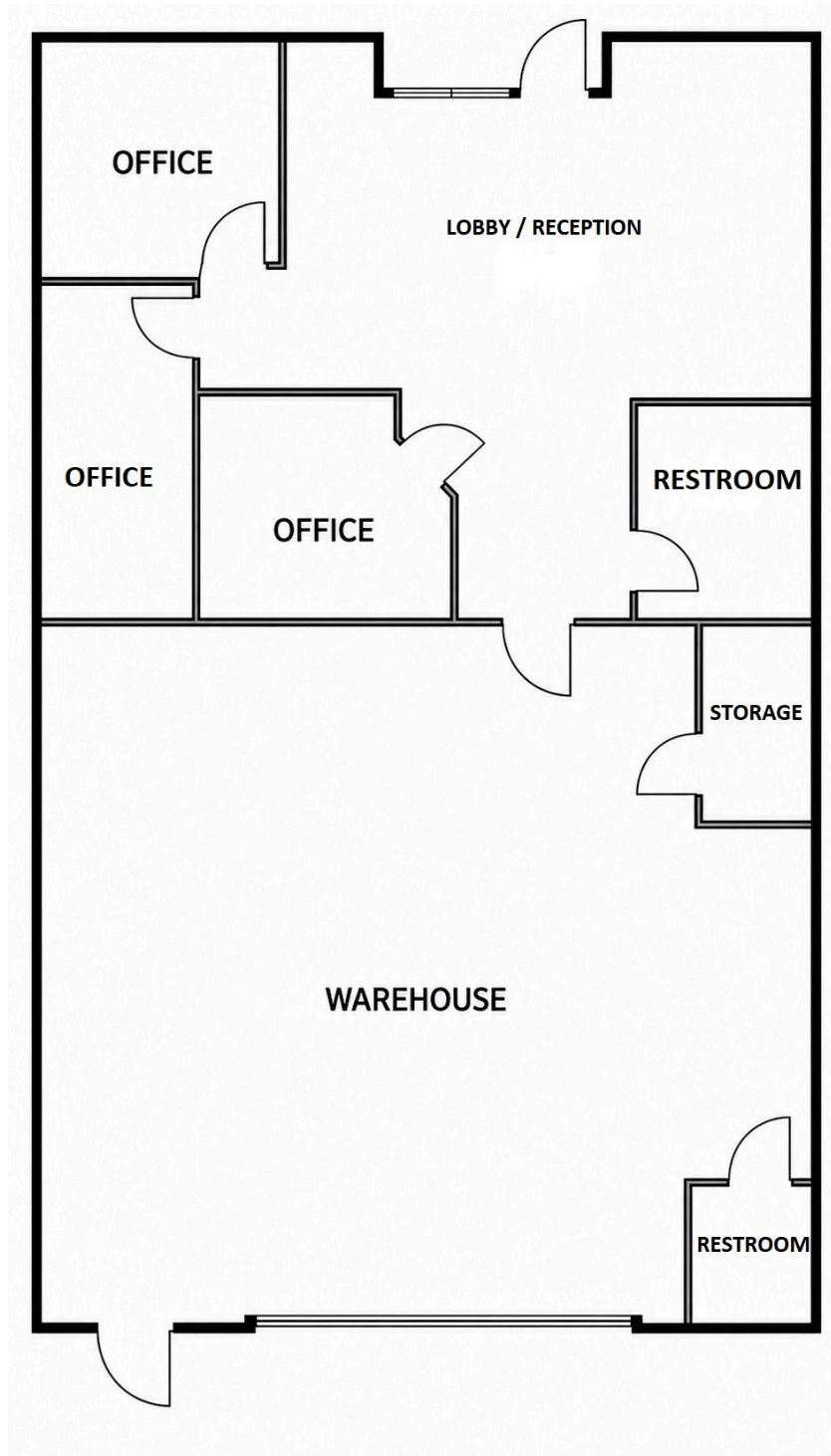
# CORNERSTONE

Realty, Inc.

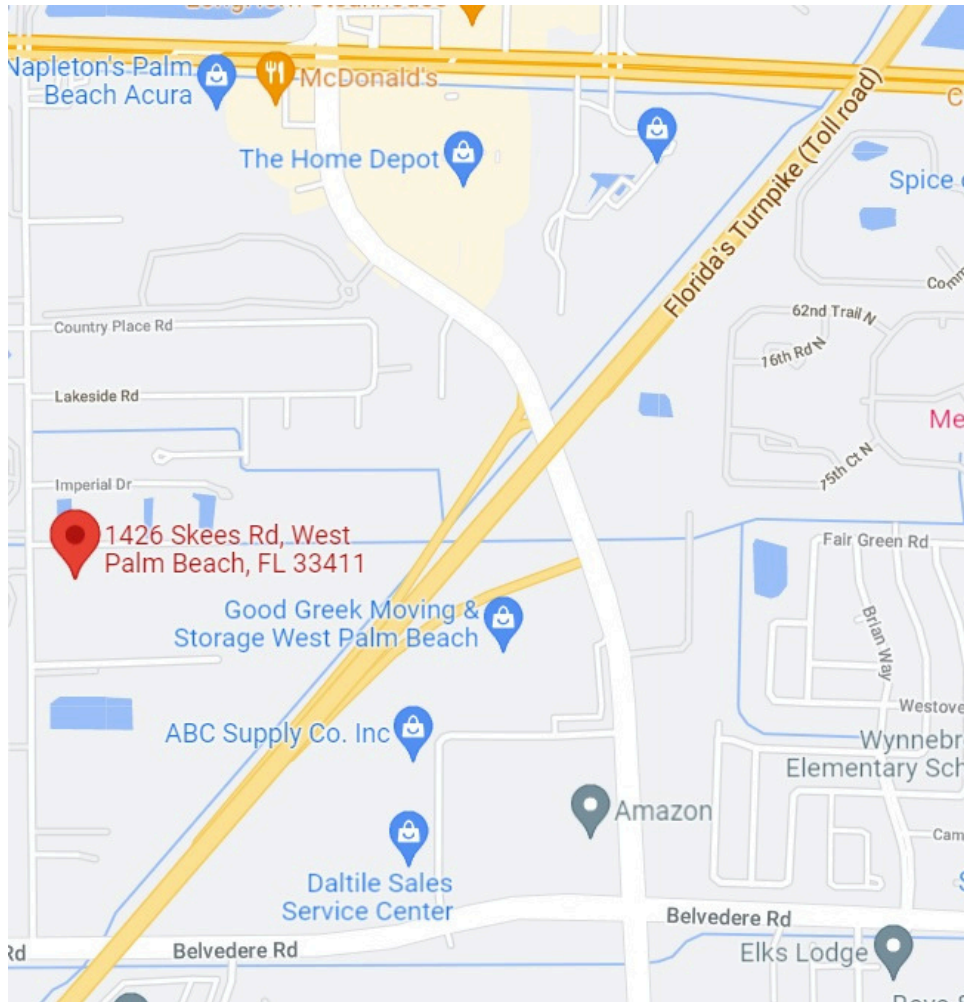




# Floor Plan Unit 1426 D



Great Location! 3 Phase electric! This industrial complex consists of 9 buildings totaling 73,000 sf. The buildings are CBS and metal construction. Each unit has a glass storefront entrance and 14 X 14 foot Grade Level Roll-up Doors. Ceiling heights are 18 to 21 ft Clear. Great Location for a variety of businesses! This complex is located on the east side of Skees Road in between Belvedere Road and Okeechobee Boulevard. Directly across from the Hippocrates Health Institute.



Contact: Devin Schmidt  
devin@cri-re.com  
561-793-9810

Cornerstone Realty, Inc  
8233 Gator Lane, Suite 18  
West Palm Beach, FL 33411  
(561)793-9810  
www.cri-re.com

