



# Office Space For Lease

## Building Highlights

- > High speed internet access available
- > Individual HVAC units
- > Highly visible and accessible at the confluence I-25, US-36, and I-76
- > Responsive, professional management

For more information please visit:  
[www.clearcreekleasing.com](http://www.clearcreekleasing.com)

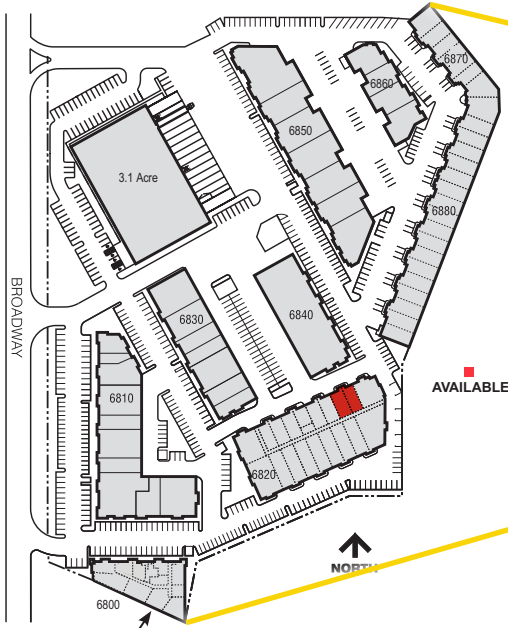
## Clear Creek Business Center

6820 N. Broadway | H-I | Denver, CO 80221

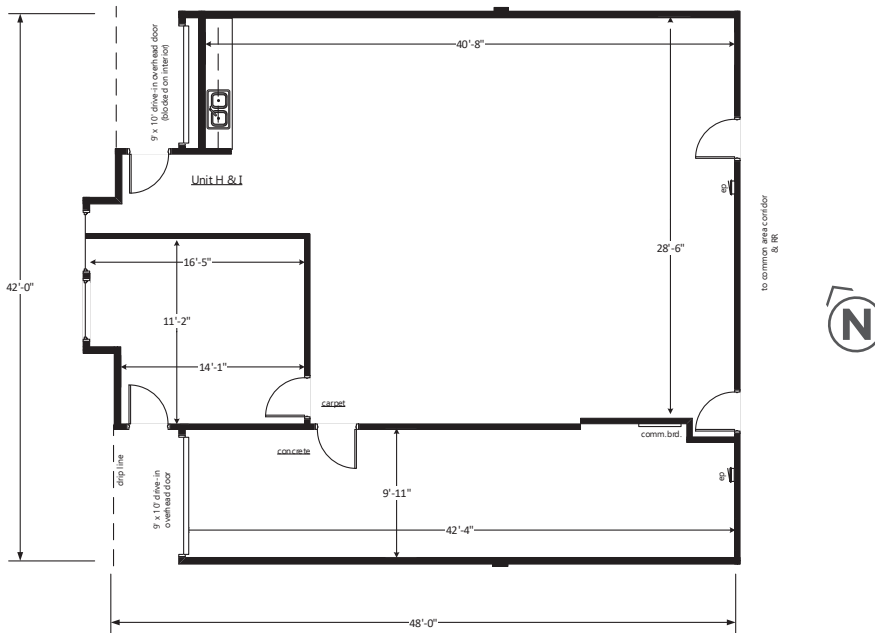
### Suite Information

Unit:	H-I
Size:	2,336 SF
Office:	75%
Loading:	One (1) Drive-In Door (Additional Drive-In possible)
Lease Rate:	\$10.50/SF NNN
Est. 2025 Op. Ex.:	\$7.38/SF
Power:	100 Amp, 120/208 Volt, 3-Phase (TBV)
Zoning:	PUD
Parking:	2.7:1,000 SF parking ratio
Sprinkler:	No
Available:	Immediately

# For Lease



## Floor Plan | H-I



### Contact us:

**T.J. Smith, SIOR**

Principal  
+1 303 283 4576  
[tj.smith@colliers.com](mailto:tj.smith@colliers.com)

**Matt Keyerleber**

Principal  
+1 720 284 7100  
[matt.keyerleber@colliers.com](mailto:matt.keyerleber@colliers.com)



BROKERAGE  
DISCLOSURE

### Colliers

4643 S. Ulster Street, Suite 1000  
Denver, CO 80237  
P: +1 303 745 5800  
F: +1 303 745 5888

This communication has been prepared by Colliers Denver for advertising and/or general information only. Colliers Denver makes no guarantees, representations or warranties of any kind, expressed or implied, regarding the information including, but not limited to, warranties of content, accuracy and reliability. Any interested party should undertake their own inquiries as to the accuracy of the information. Colliers Denver excludes unequivocally all inferred or implied terms, conditions and warranties arising out of this document and excludes all liability for loss and damages arising therefrom. This publication is the copyrighted property of Colliers Denver and/or its licensor(s). © 2025. All rights reserved. This communication is not intended to cause or induce breach of an existing listing agreement.