

OUTPATIENT MEDICAL SPACE



Centerpoint Medical Building
19550 E 39th St | Independence, Missouri

Property Features

- 968-7,883 RSF divisible medical suites available
- Plentiful surrounding support services including restaurants, banks, shopping
- Attached to Centerpoint Medical Center on each floor - easy access to/from the hospital
- Flexible Tenant Improvement Allowance options available to custom upgrade your suite
- Exposure to excellent East Jackson County area demographics
- Ample parking for any medical use

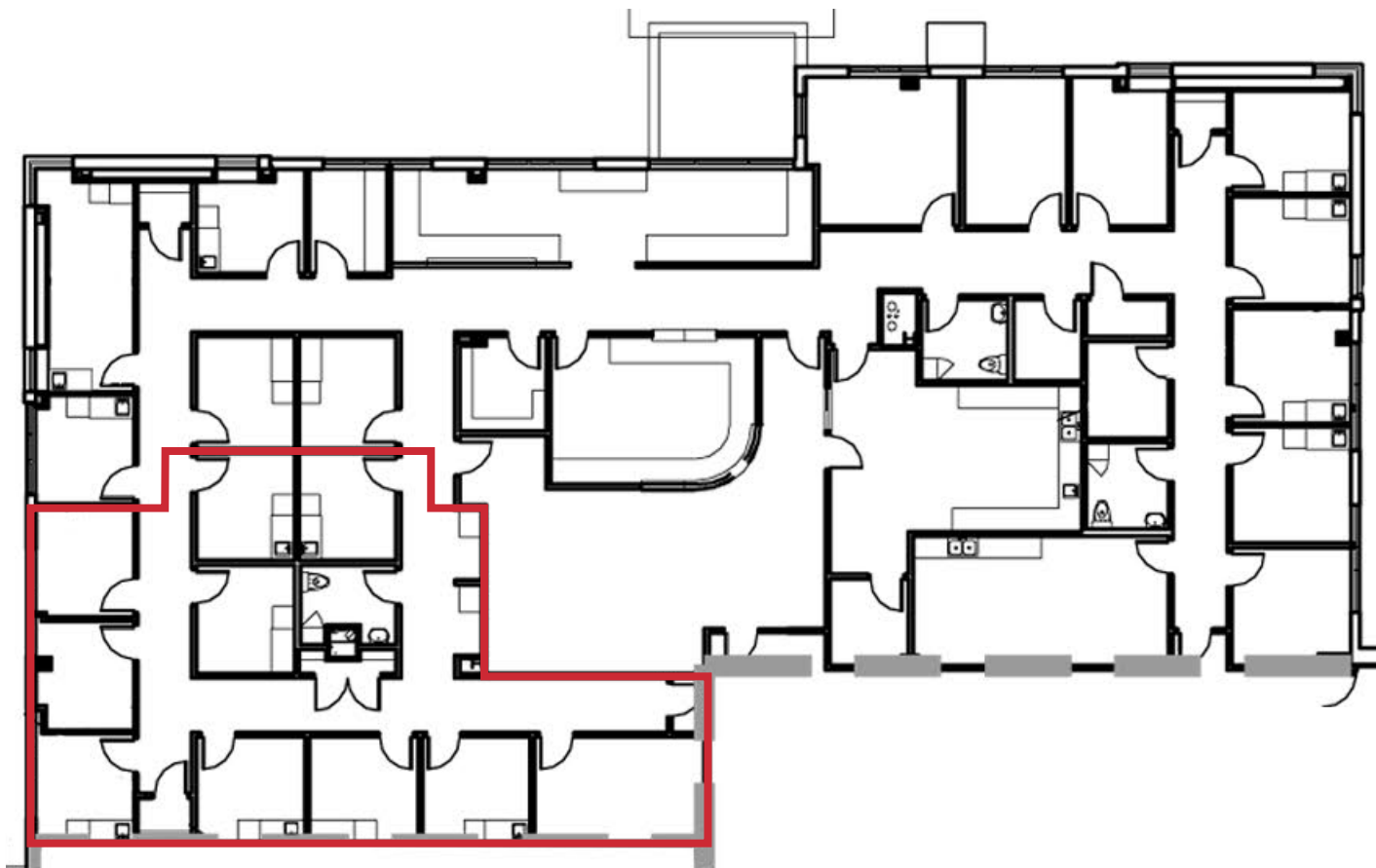
DEMOGRAPHICS	1 MILE	3 MILES	5 MILES
Population:	4,767	51,592	131,504
Median HH Income:	\$70,168	\$74,929	\$75,291

NO WARRANTY OR REPRESENTATION, EXPRESS OR IMPLIED, IS MADE AS TO THE ACCURACY OF THE INFORMATION CONTAINED HEREIN, AND THE SAME IS SUBMITTED SUBJECT TO ERRORS, OMISSIONS, CHANGE OF PRICE, RENTAL OR OTHER CONDITIONS, PRIOR SALE, LEASE OR FINANCING, OR WITHDRAWAL WITHOUT NOTICE, AND OF ANY SPECIAL LISTING CONDITIONS IMPOSED BY OUR PRINCIPALS NO WARRANTIES OR REPRESENTATIONS ARE MADE AS TO THE CONDITION OF THE PROPERTY OR ANY HAZARDS CONTAINED THEREIN ARE ANY TO BE IMPLIED.

4400 College Boulevard, Suite 170
Overland Park, Kansas 66211
+1 913 362 1000
nai-heartland.com

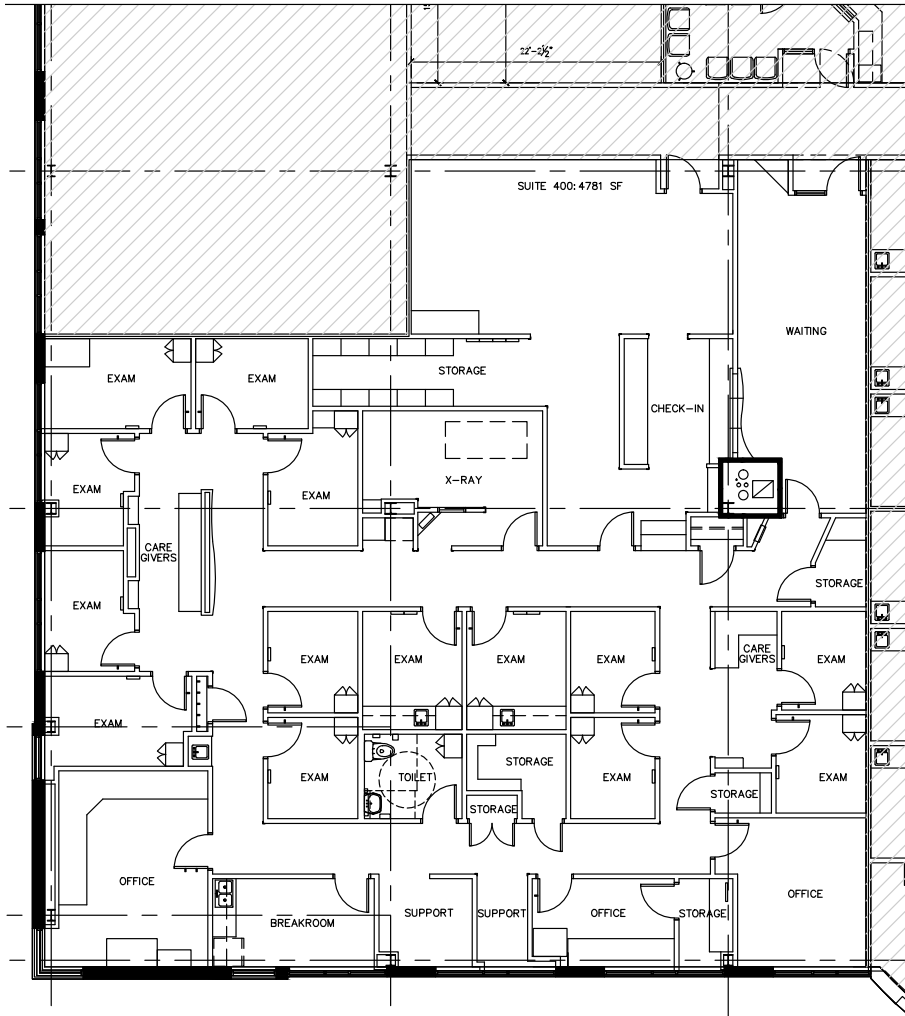
AVAILABLE SUITES

SUITE 245: 7,883 SF (Divisible to \pm 1,500-1,900 SF as Shown Below in Red)



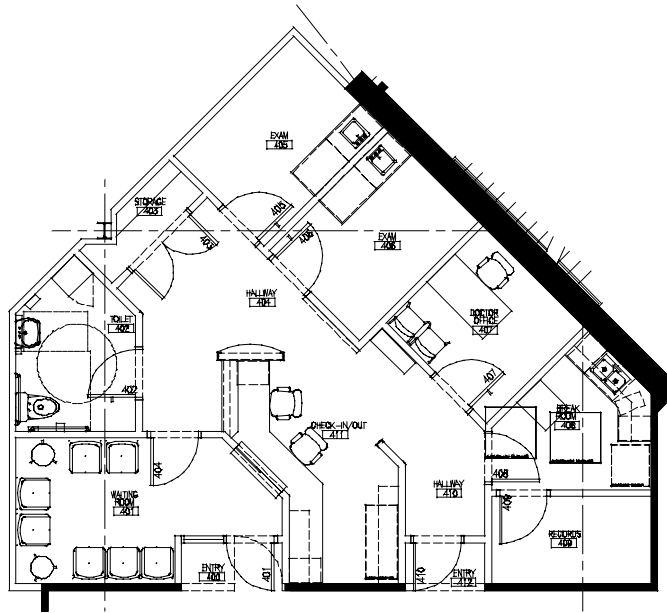
AVAILABLE SUITES

SUITE 400: 5,276 SF

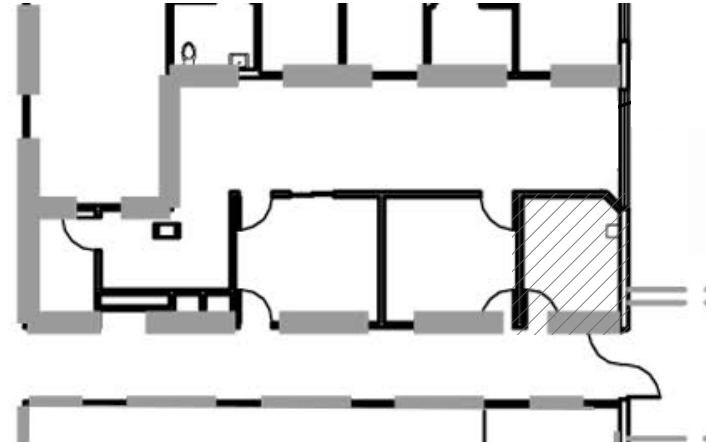


AVAILABLE SUITES

SUITE 415: 1,080 SF



SUITE 420: 968 SF (Available on 30 Day Notice)



FOR LEASE



INDEPENDENCE COMMONS
Kohl's
BEST BUY
ROSS DRESS FOR LESS
AMC THEATRES
Marshall's
SHOE CARNIVAL
FIVE BELOW

1955
E 39TH
STREET

Centerpoint
MEDICAL CENTER
TCA MidWest HEALTH SYSTEM

INDEPENDENCE CENTER
Dillard's
FOREVER 21
carhartt
DICK'S SPORTING GOODS
H&M

PAVILIONS AT HARTMAN HERITAGE
WORLD MARKET
PARTY CITY
GOLD STONE CREAMERY
HARDY BOOKS
TJ MAXX
TOP GUN



291

70

70

291

LITTLE BLUE PKWY



FOR LEASING INFORMATION, PLEASE CONTACT:

MIKE SONNENBERG, CCIM

+1 913 956 5812

mike@nai-heartland.com

Healthpeak® | DOC LISTED NYSE

NAIHeartland

NO WARRANTY OR REPRESENTATION, EXPRESS OR IMPLIED, IS MADE AS TO THE ACCURACY OF THE INFORMATION CONTAINED HEREIN, AND THE SAME IS SUBMITTED SUBJECT TO ERRORS, OMISSIONS, CHANGE OF PRICE, RENTAL OR OTHER CONDITIONS, PRIOR SALE, LEASE OR FINANCING, OR WITHDRAWAL WITHOUT NOTICE, AND OF ANY SPECIAL LISTING CONDITIONS IMPOSED BY OUR PRINCIPALS NO WARRANTIES OR REPRESENTATIONS ARE MADE AS TO THE CONDITION OF THE PROPERTY OR ANY HAZARDS CONTAINED THEREIN ARE ANY TO BE IMPLIED.