



1100 SPRING ST

ESTABLISHED 1970

1100 SPRING STREET NW
ATLANTA, GA 30309

Located in the popular Midtown area of Atlanta, this highly accessible office building is conveniently located near fine shops and restaurants, minutes from the Arts Center and Midtown Marta Stations and the I-75/I-85 connector. Amenities include: fitness center, cafe, on-site management and maintenance, and covered, gated parking. Located in Midtown Opportunity Zone.

**EXCLUSIVELY
MARKETED BY:**

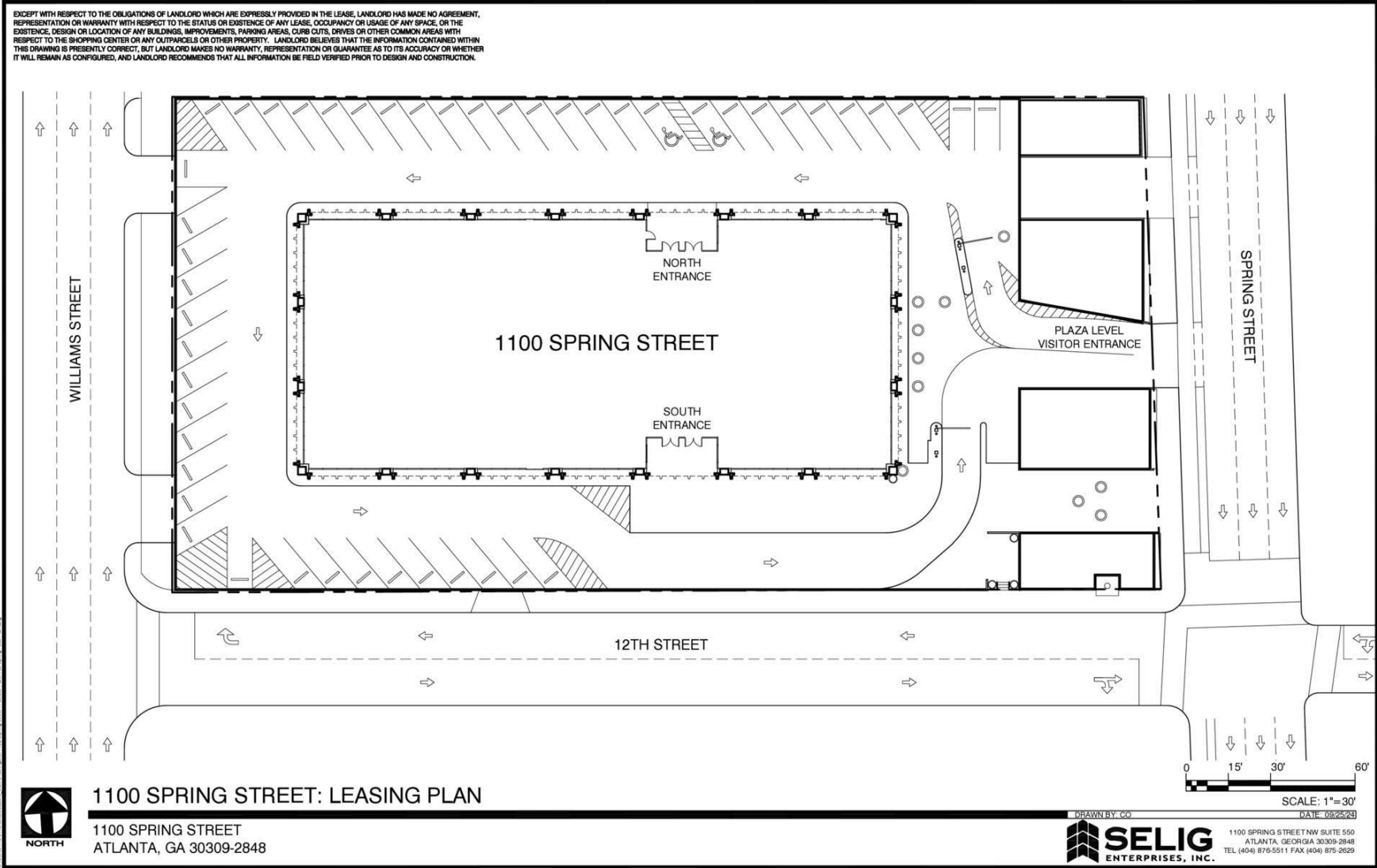


JIM SAINE

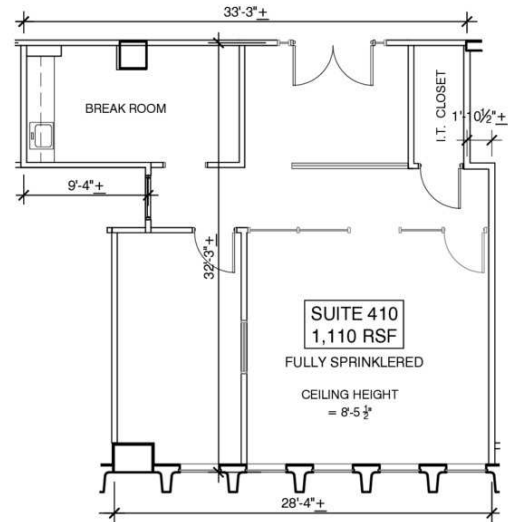
404.898.9010

jsaine@seligenterprises.com





EXCEPT WITH RESPECT TO THE QUALITY OF LANDLORD WHICH ARE EXPRESSLY PROVIDED IN THE LEASE, LANDLORD HAS MADE NO REPRESENTATION OR WARRANTY WITH RESPECT TO THE EXISTENCE OR EXISTENCE OF ANY LEASE, OCCUPANCY OR USAGE OF ANY SPACE, OR THE ACCURACY, DESIGN OR LOCATION OF ANY BUILDING, IMPROVEMENTS, FIXTURES, MECHANICAL, ELECTRICAL, PLUMBING OR OTHER COMMON AREAS WITH RESPECT TO THE SHOPPING CENTER OR ANY OUTPARCELS OR OTHER PROPERTY. LANDLORD BELIEVES THAT THE INFORMATION CONTAINED WITHIN THIS DRAWING IS PRESENTLY CORRECT, BUT LANDLORD MAKES NO WARRANTY, REPRESENTATION OR GUARANTEE AS TO ITS ACCURACY OR WHETHER IT WILL REMAIN AS COMPLETED, AND LANDLORD RECOMMENDS THAT ALL INFORMATION BE FIELD VERIFIED PRIOR TO DESIGN AND CONSTRUCTION.



1100 SPRING STREET: SUITE 410 - FLOOR PLAN

1100 SPRING STREET, SUITE 410
ATLANTA, GA. 30309-2848



DRAWN BY: CO

 1100 SPRING STREET NW SUITE 550
ATLANTA, GEORGIA 30309-2848
TEL (404) 875-5511 FAX (404) 875-2829

