



4,575 SF Available For Sublease
In Woodfield Business Center

1000 E. State Pkwy, Unit A Schaumburg, IL

Property overview

- Building Size: 48,800 SF
- Available: Unit A - 4,575 SF
- Office: 2,379 SF
- Property Type: Industrial/Flex
- Loading Docks: 2 exterior - common
- Drive-in Doors: 2
- Ceiling Height: 14' clear
- Power: 200 amps
- Sprinkler: Fully
- Parking Ratio: 3 per 1,000 SF
- Lease Rate: \$15.00 psf modified gross
- Taxes: \$4.16/SF (2026 estimate)
- Opex: \$2.13/SF (2026 estimate)

Comments

- Quick access to all major expressways
- High image flex space with excellent loading and parking
- Minutes from restaurants, shopping and amenities

Contact us:

Kelly Joyce, CCIM

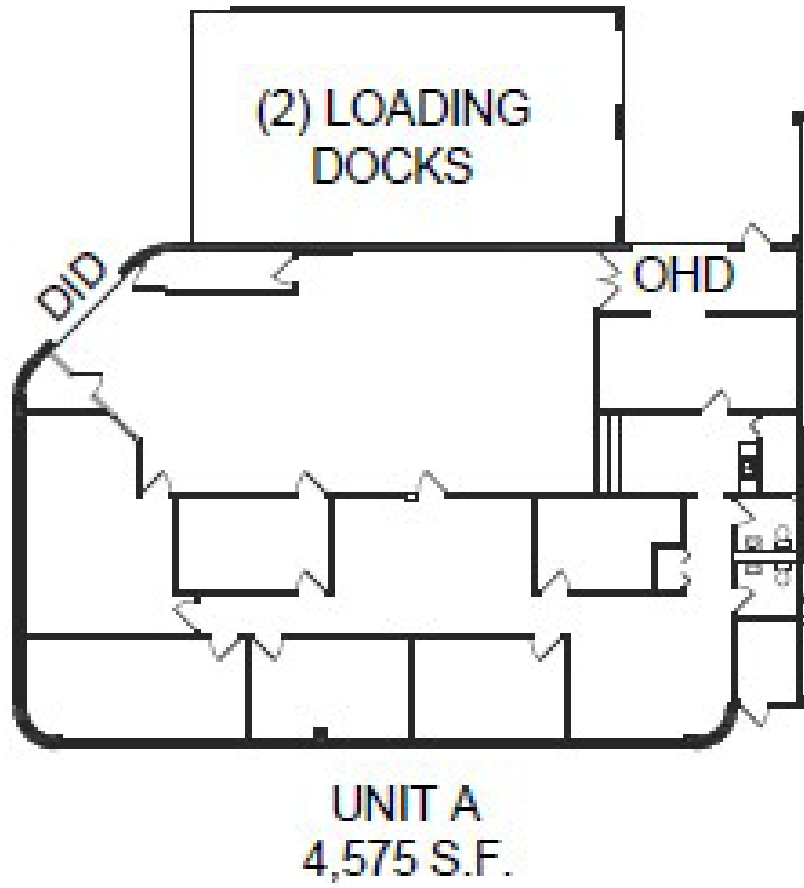
Senior Vice President
+1 847 698 8276
kelly.joyce@colliers.com



6250 N. River Road, Suite 11-100
Rosemont, IL 60018
colliers.com

Copyright © 2026 Colliers International.

Information herein has been obtained from sources deemed reliable, however its accuracy cannot be guaranteed. The user is required to conduct their own due diligence and verification.



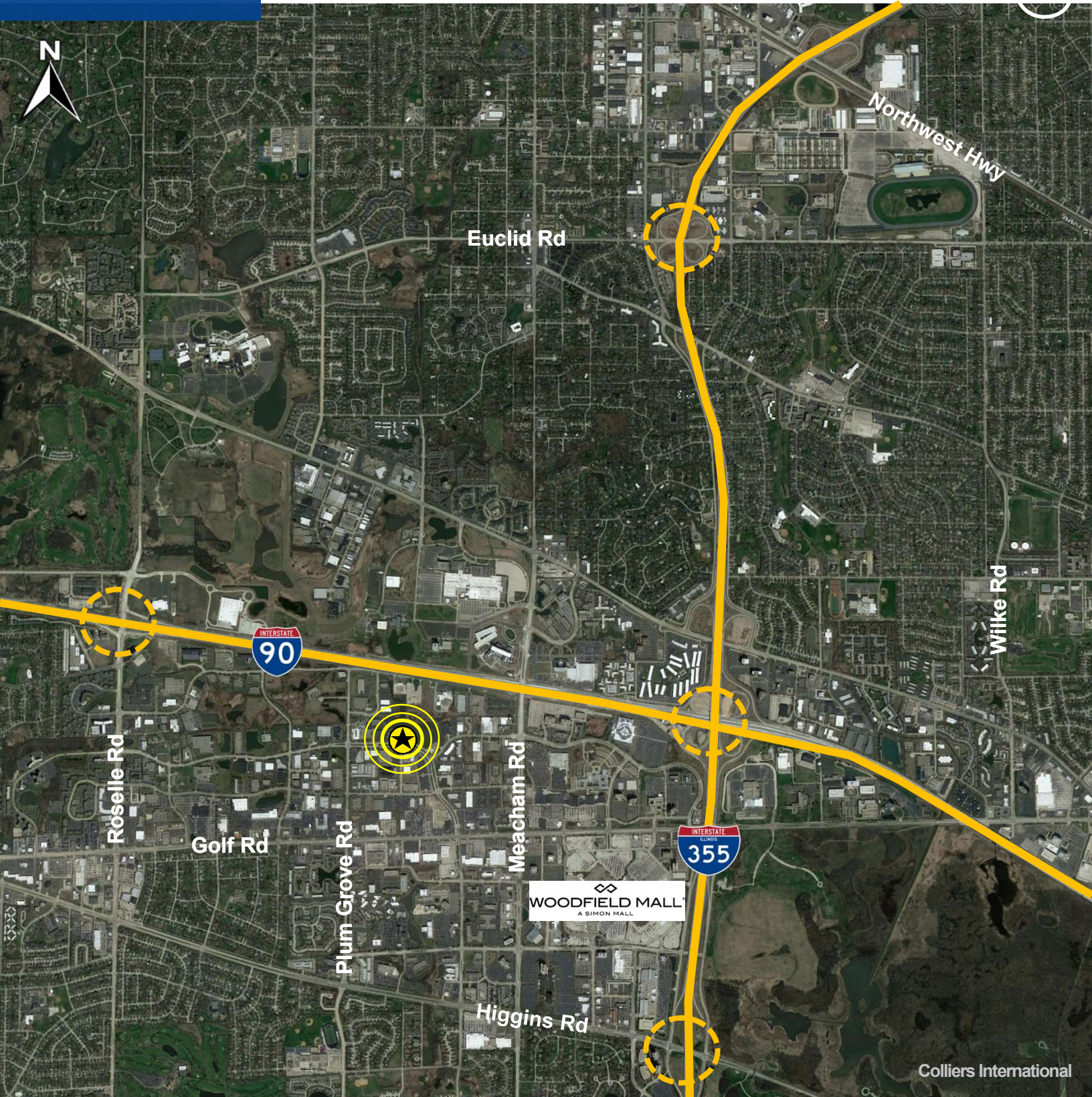
Kelly Joyce, CCIM
Senior Vice President
+1 847 698 8276
kelly.joyce@colliers.com

Building Photos



Kelly Joyce, CCIM
Senior Vice President
+1 847 698 8276
kelly.joyce@colliers.com

Aerial



Kelly Joyce, CCIM
Senior Vice President
+1 847 698 8276
kelly.joyce@colliers.com

Colliers International