



THE WAGER BUILDING

220-222  
*W Second Ave*

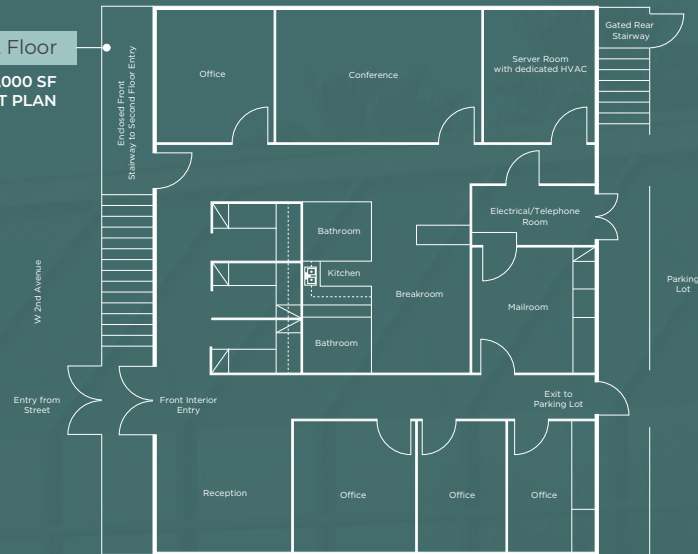
2 story office building  
available for lease in

*Escondido, Ca*

 LEE &  
ASSOCIATES  
COMMERCIAL REAL ESTATE SERVICES

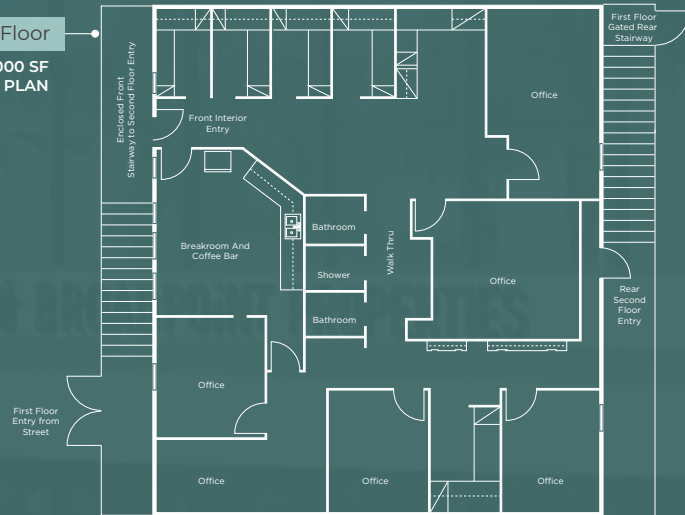
**First Floor**

**2,000 SF  
AS BUILT PLAN**



**Second Floor**

**2,000 SF  
AS BUILT PLAN**



# Property Highlights



**APPROXIMATELY 4,000 SF**

Two-story professional office building



**18 PARKING SPACES**

Plus, abundant on-street parking



**WALKING DISTANCE**

To Downtown Escondido restaurants, shops, and amenities



**PROFESSIONAL OFFICE LAYOUT**

With in suite restrooms, showers, kitchen, conference rooms, private offices, server with dedicated HVAC and open area



**EYEBROW SIGNAGE**

Available facing busy 2nd Avenue



**GREAT ACCESSIBILITY**

To I-15 & Hwy-78

**LEASE OPPORTUNITY**

Entire building or half available at **\$1.85/SF NNN** with 1-5 year terms.

Floorplans not to scale, for reference only.

FOR LEASE

## THE WAGER BUILDING

### 220-222 W Second Ave, Escondido, CA 92025

A versatile 4,000 SF professional building in Downtown Escondido, featuring a high-end "as-built" layout with 18 dedicated parking spaces.

#### Flexible Leasing Opportunities

Strategic floor-by-floor pricing designed to accommodate high-traffic medical practitioners and budget-conscious professional firms alike.

- **Entire Building (4,000 SF): \$1.85/SF NNN | \$10,000/mo total**  
The most cost-effective option for a single-tenant headquarters.
- **First Floor – Medical/ADA (2,000 SF): \$2.95/SF NNN | \$7,200/mo total**  
Premium ground-floor space with high visibility, patient accessibility, and medical-ready infrastructure.
- **Second Floor – General Office (2,000 SF): \$0.75/SF NNN | \$2,800/mo total**  
Incentive-priced walk-up space. Ideal for administrative, billing, or creative uses at an unbeatable price point.

#### Key Property Features

- **Medical Infrastructure:** Includes a server room with dedicated HVAC, in-suite restrooms, and private showers.
- **Parking & Access:** 18 private spaces plus abundant on-street parking. Walking distance to Downtown amenities.
- **Signage:** High-visibility eyebrow signage available facing busy 2nd Avenue.
- **Transit:** Rapid accessibility to I-15 and Hwy-78.

#### TRAFFIC COUNTS

STREET NAME	CROSS STREET	TRAFFIC COUNT	DISTANCE
W 2nd Ave	S Maple St SW	16,700	0.05 mi
W Grand Ave	S Maple St NE	11,601	0.06 mi
S Escondido Blvd	Alley NW	16,217	0.06 mi

#### NNN Breakdown

EXPENSE CATEGORY	ANNUAL TOTAL	MONTHLY TOTAL	PER SF/MONTH
Property Taxes (Actual 2025)	\$14,472.30	\$1,206.03	\$0.30
Property Insurance (Estimated)	\$4,800.00	\$400.00	\$0.10
CAM / Operating Expenses (Estimated)	\$12,000.00	\$1,000.00	\$0.25
Total Estimated NNN Fees	\$31,272.30	\$2,606.03	\$0.65

#### LEASE RATES

LEASE SCENARIO	SF	BASE RENT (NNN)	EST. NNN	MONTHLY TOTAL
Entire Building	4,000 SF	\$1.85/SF	\$0.65/SF	\$10,000.00
First Floor (Medical)	2,000 SF	\$2.95/SF	\$0.65/SF	\$7,200.00
Second Floor (Office)	2,000 SF	\$0.75/SF	\$0.65/SF	\$2,800.00

# Property Photos





CALIFORNIA  
15

- IHOP
- LA FITNESS
- DAIRY QUEEN
- STARBUCKS

- SWAMI'S CAFE
- REGAL ESCONDIDO
- NORTHGATE MARKET
- FILIPPI'S PIZZA GROTTTO

220  
*W Second Ave*

- TOYOTA ESCONDIDO
- EL SUPER
- FOOD 4 LESS
- LITTLE CAESAR'S PIZZA

- TJ TACOS
- BEST PIZZA & BREW
- ESCONDIDO ANTIQUE MALL
- BURGER BENCH

- DUTCH BROS COFFEE
- LATITUDE 33
- PETSMART
- SMART & FINAL

- 24 HOUR FITNESS
- ROSS DRESS FOR LESS
- TARGET
- CHICK-FIL-A

- SPROUTS FARMERS MARKET
- STARBUCKS
- BURGER KING
- BRIGANTINE SEAFOOD
- JIMBO'S
- BETTER BUZZ COFFEE
- TRADER JOE'S
- MAJOR MARKET

- LITTLE CAESARS PIZZA
- PETERSON'S DONUT CORNER
- LOS PANCHOS MEXICAN GRILL
- LOURDES MEXICAN FOOD

220-222 W SECOND AVENUE, ESCONDIDO

*Area Amenities*

# Escondido

Settled in a long valley in the coastal mountains of Southern California, Escondido, which means "hidden" in Spanish, lies about 18 miles inland, 100 miles south of Los Angeles, and 30 miles northeast of San Diego. Surrounded by avocado and citrus groves, our award-winning City is a diverse, vibrant community.

More and more people are making Escondido their "City of Choice." As the heart of San Diego North, it is one of the few remaining communities where people of all income levels can enjoy the Southern California lifestyle. We offer attractive homes in a wide range of prices, two lakes, several parks, a sports center, golf courses, restaurants, wineries, shopping centers, comprehensive healthcare, and the nearby San Diego Zoo Safari Park. In addition, the California Center for the Arts, Escondido, brings world-class entertainment to the area along with Queen Califia's Magical Circle, a sculpture garden in Kit Carson Park donated by late internationally renowned artist Niki de Saint Phalle. In recent years Escondido was named by Money Magazine as the Best Place in the West in which to retire and, at the other end of the spectrum, was named a Kid-Friendly City for our broad range of youth programs. Ladies Home Journal also ranked Escondido number eight among the Top Ten Cities for Government.

Established in 1888, the city's rich past brings charm and stability to the community. You can see it in the historic homes of Old Escondido or experience it in the thriving downtown area and the weekly blast to the past, "Cruisin' Grand." Yet integrated with Escondido's treasured heritage is a progressive future, bright and brimming with promise. New jobs, new cultural amenities, new entertainment venues, new choices for residential living, and a new vision for Escondido's future, make Escondido a city to watch.

30 MINUTES TO TEMECULA

.07 MILES TO ESCONDIDO TRANSIT CENTER

30.3 MILES TO SAN DIEGO AIRPORT

**140,289**

—  
2024 POPULATION  
3 MILE RADIUS

**57,845**

—  
DAYTIME EMPLOYEES  
3 MILE RADIUS

**\$1.5B**

—  
CONSUMER SPENDING  
3 MILE RADIUS

**\$94,552**

—  
AVERAGE HH INCOME  
3 MILE RADIUS

**36**

—  
MEDIAN AGE  
3 MILE RADIUS

**\$676,134**

—  
MEDIAN HOME VALUE  
3 MILE RADIUS



220-222  
W Second Ave

Escondido, Ca

For information or tours,  
please contact:

RICK CHATHAM  
Senior Associate

t 253.988.8802  
rchatham@lee-associates.com  
CA RE Lic. #0210796

 LEE &  
ASSOCIATES  
COMMERCIAL REAL ESTATE SERVICES

All information furnished regarding property for sale, rental or financing is from sources deemed reliable, but no warranty or representation is made to the accuracy thereof and same is submitted subject to error, omissions, change of price, rental or other conditions prior to sale, lease or financing or withdrawal without notice. No liability of any kind is to be imposed on the broker herein.