

8481 DUKE BLVD.

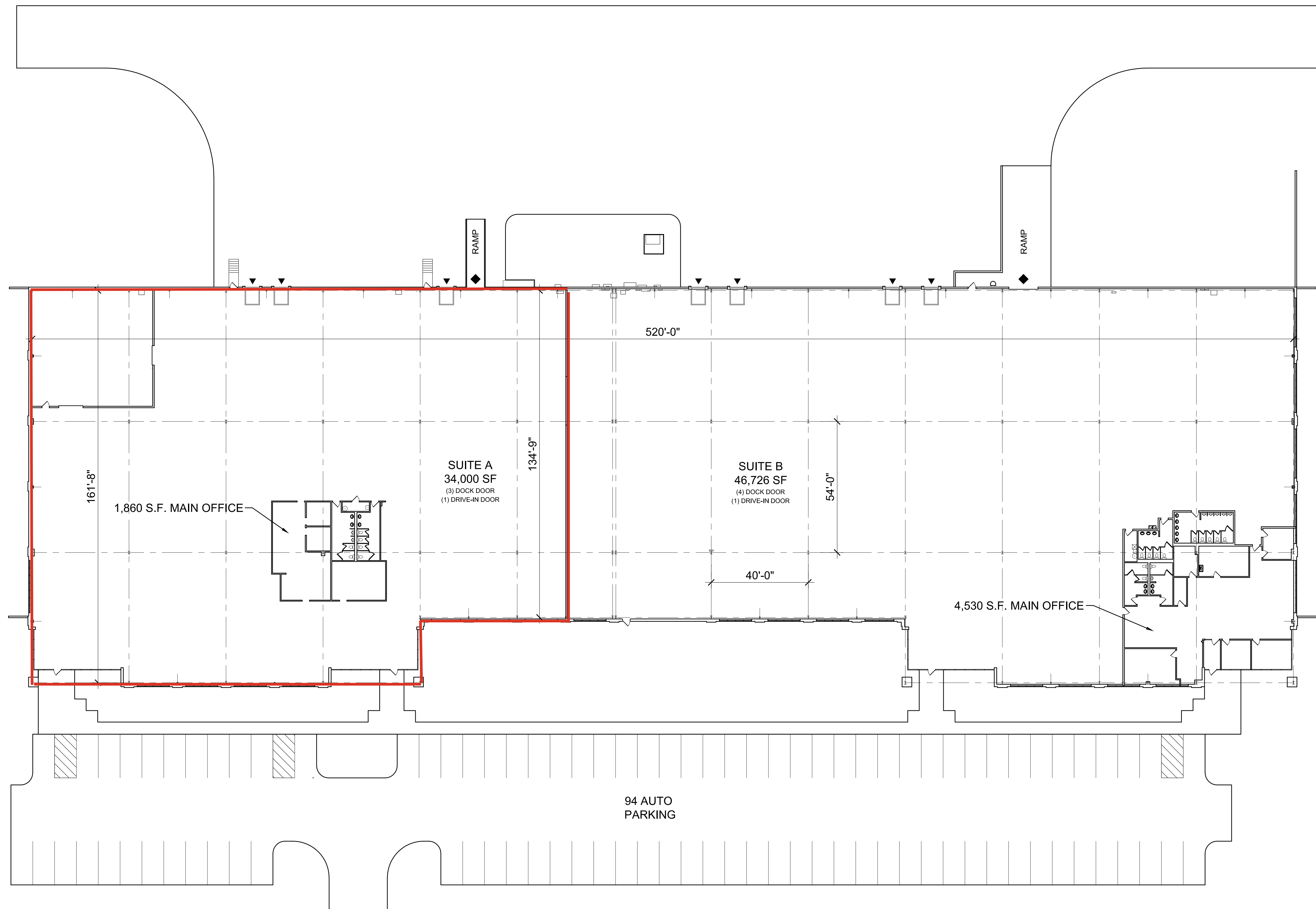
Mason, OH 45040

PROPERTY INFORMATION

TOTAL ACRES:	4.937 AC
BUILDING TOTAL:	80,726 SF
AUTO PARKING SPACES:	94
DOCK DOORS:	7
DRIVE-IN DOORS:	2

LEGEND:

- ▲ DOCK POSITION
- ◆ DRIVE-IN DOOR



NOTE: THIS CONCEPTUAL PLAN IS FOR MARKETING PURPOSES ONLY AND HAS BEEN PREPARED BASED ON PRELIMINARY AVAILABLE SITE INFORMATION DEEMED RELIABLE. ALL DIMENSION AREA CALCULATIONS ARE SUBJECT TO VERIFICATION BY A PROFESSIONAL ENGINEER FOR COMPLIANCE WITH ALL FEDERAL, STATE, AND LOCAL REGULATIONS.

SITE PLAN



101 West Elm Street, Suite 600
Conshohocken, PA 19428



1063 Central Avenue Cincinnati, Ohio 45202
p: 513.241.4422 f: 513.241.5560 www.ata-b.com

SEPTEMBER 22, 2021 PROJECT #: 21113

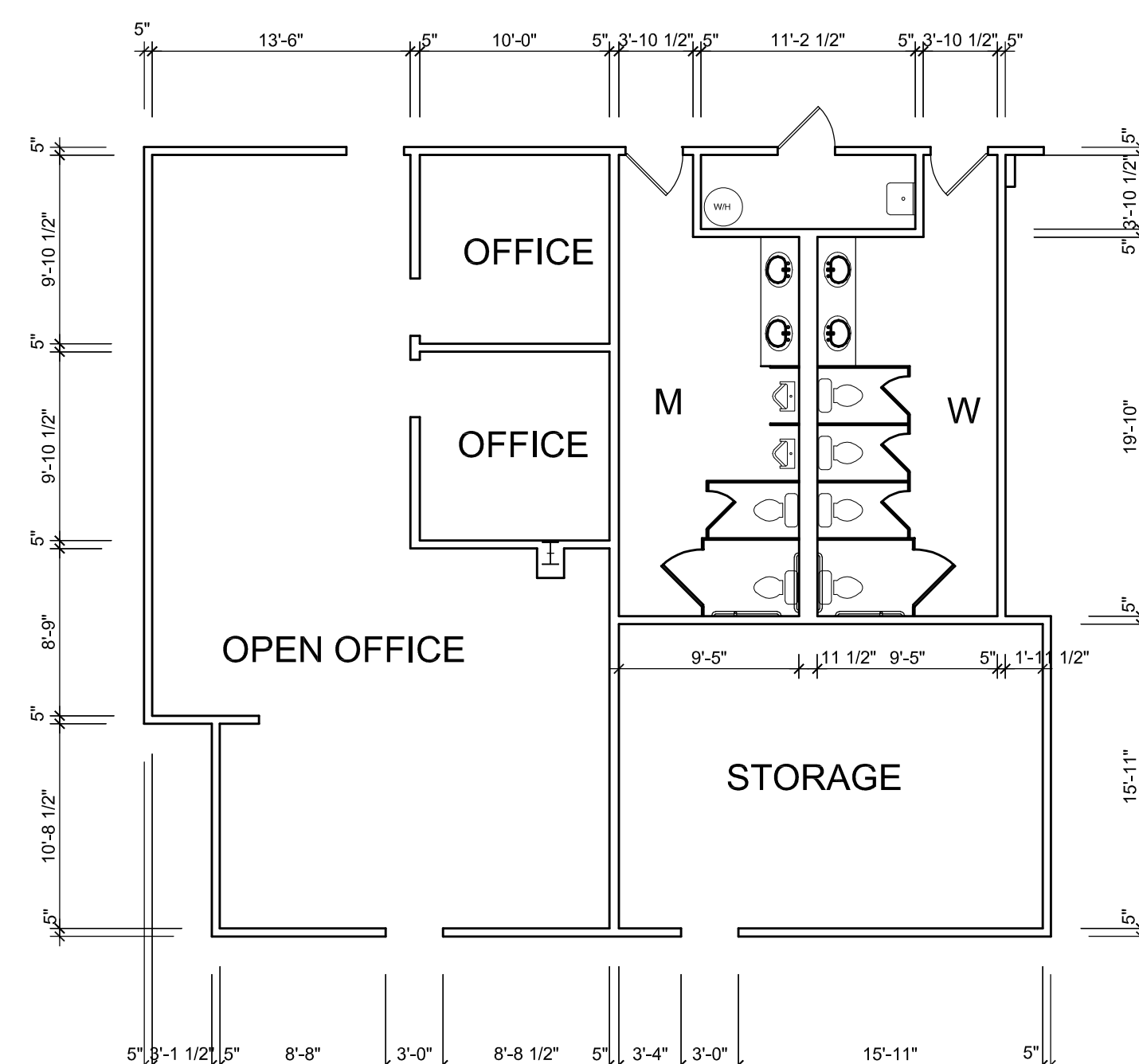
8481 DUKE BLVD.

Mason, OH 45040

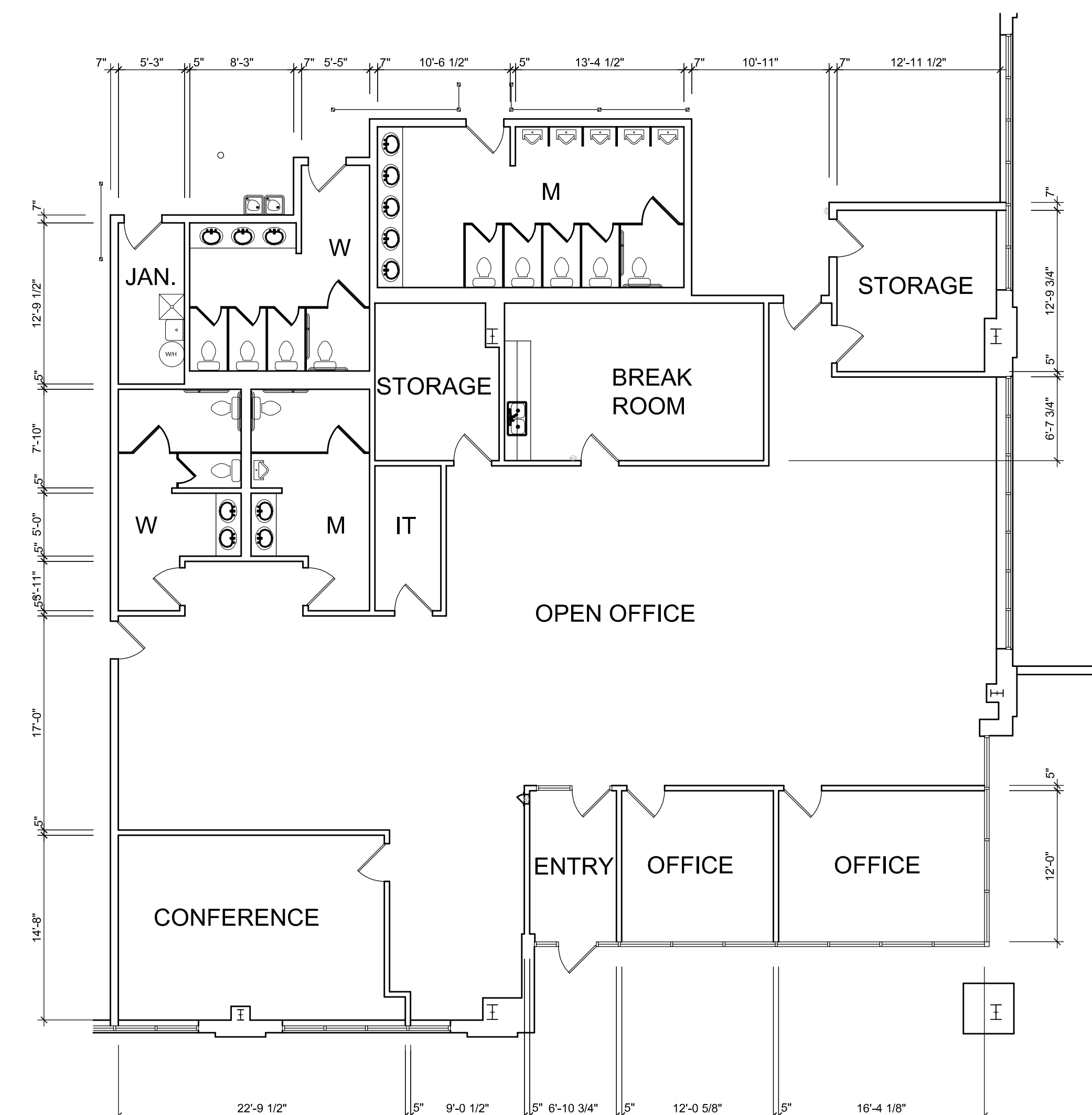
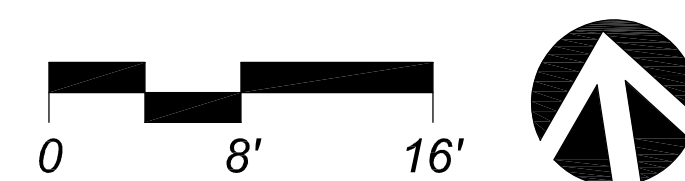
PROPOSED OFFICE

SUITE A
OFFICE AREA: 1,860 SF

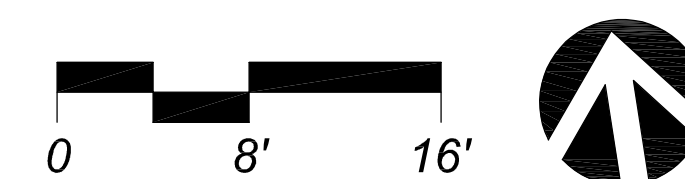
SUITE B
OFFICE AREA: 4,530 SF



OFFICE PLAN



OFFICE PLAN



NOTE: THIS CONCEPTUAL PLAN IS FOR MARKETING PURPOSES ONLY AND HAS BEEN PREPARED BASED ON PRELIMINARY AVAILABLE SITE INFORMATION DEEMED RELIABLE. ALL DIMENSION AREA CALCULATIONS ARE SUBJECT TO VERIFICATION BY A PROFESSIONAL ENGINEER FOR COMPLIANCE WITH ALL FEDERAL, STATE, AND LOCAL REGULATIONS.



101 West Elm Street, Suite 600
Conshohocken, PA 19428



1063 Central Avenue Cincinnati, Ohio 45202
p: 513.241.4422 f: 513.241.5560 www.ata-b.com

SEPTEMBER 22, 2021 PROJECT #: 21113