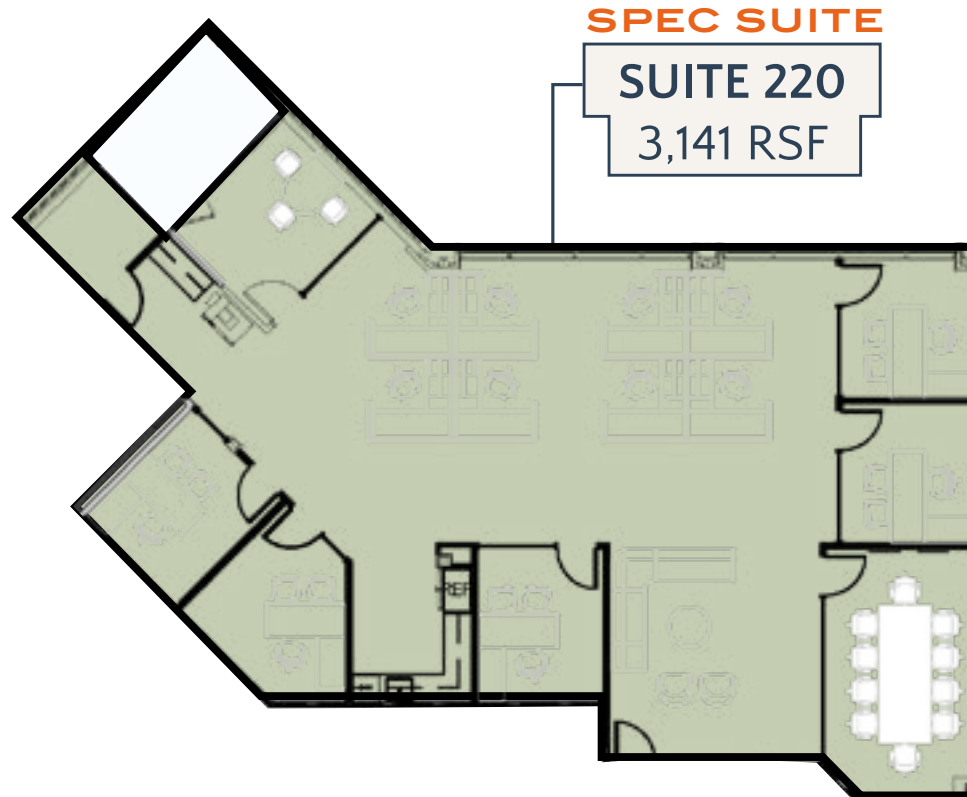
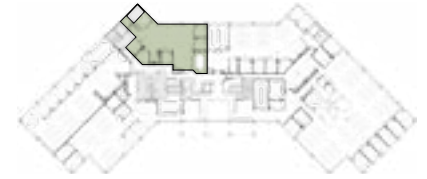


# SUITE 220

1800 PERIMETER PARK DRIVE | MORRISVILLE, NC 27560

move-in-ready spec suite

# 1800 PERIMETER



## LEASING CONTACTS

**William Allen**

Managing Partner

919.415.4390 | wallen@trinity-partners.com

**Alex Dunn**

Director, Office Leasing

919.415.4405 | adunn@trinity-partners.com