

Specifications

±35,000 SF
TOTAL BUILDING SIZE

±1.83 AC (Block 627, Lot 1)
Paved and Fenced
LOT ACREAGE

Block and Steel with Brick Facade
CONSTRUCTION

12' – 18' Clear
CEILING HEIGHTS

400 Amps
POWER

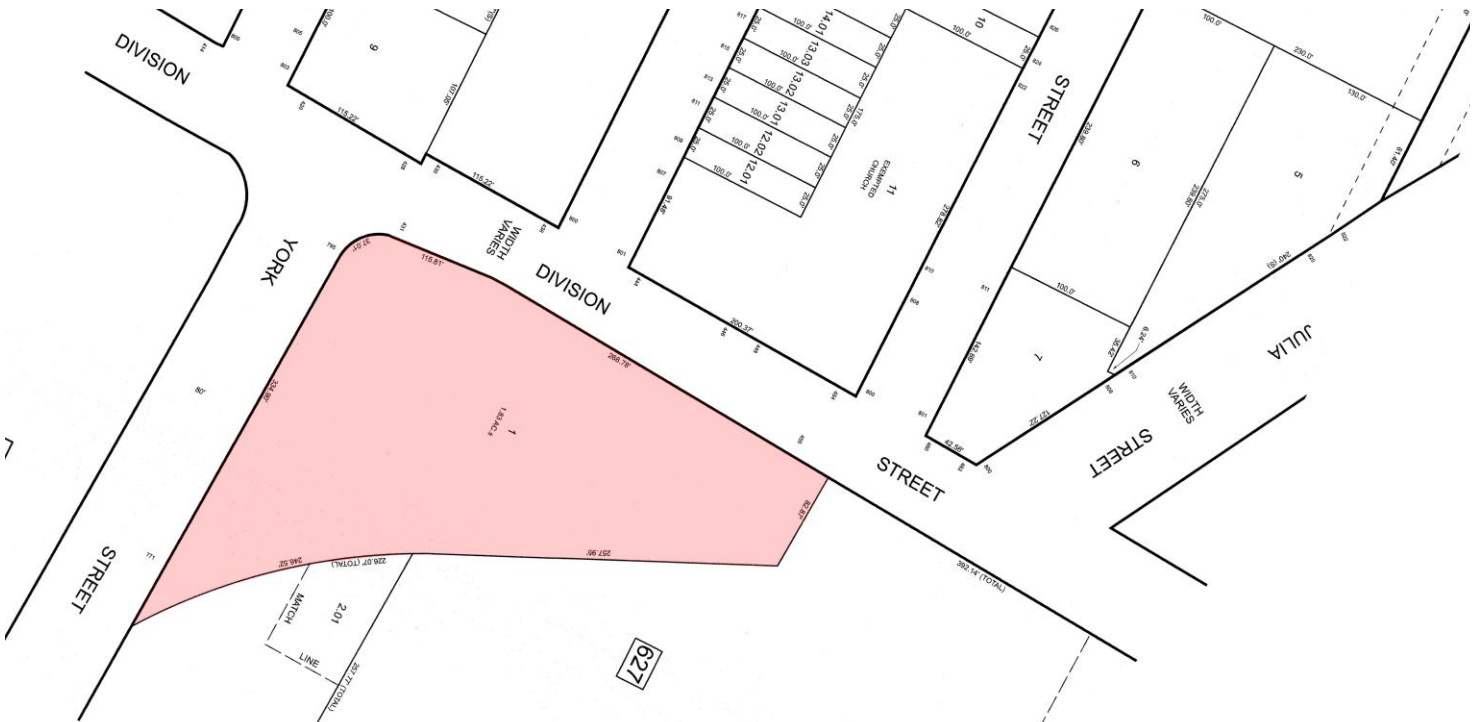
Gas Suspended Heaters
HEAT

5 Docks
TAILBOARD LOADING

2 Drive-Ins
GRADE LEVEL DOORS

For additional property information or to arrange an inspection, please contact the exclusive brokers:

Kenneth F. Crimmins, CCIM, SIOR, Chairman, 973.379.6644 x 111, kfcrimmins@blauberg.com
Jason M. Crimmins, CCIM, SIOR, Chief Executive Officer, 973.379.6644 x 122, jmcrimmins@blauberg.com
Laura L. Crimmins, SIOR, Executive Director, 973.379.6644 x 142, lcrimmins@blauberg.com



For additional property information or to arrange an inspection, please contact the exclusive brokers:

- Kenneth F. Crimmins, CCIM, SIOR, Chairman**, 973.379.6644 x 111, kfcrimmins@blauberg.com
- Jason M. Crimmins, CCIM, SIOR, Chief Executive Officer**, 973.379.6644 x 122, jmcrimmins@blauberg.com
- Laura L. Crimmins, SIOR, Executive Director**, 973.379.6644 x 142, lcrimmins@blauberg.com

The information contained herein has been obtained from sources considered to be reliable, but no guarantee of its accuracy is made by this company. In addition, no representation is made respecting zoning, condition of title, dimensions, or any matters of a legal or environmental nature. Such matters should be referred to legal counsel for determination. Terms and conditions are subject to change without prior notice. Subject to errors and omissions.



5 MILES

- Total Population: 678,499
- Households: 240,668
- Median Household Income: \$81,151
- Average Household Size: 2.8
- Transportation to Work: 333,168
- Labor Force: 539,922

10 MILES

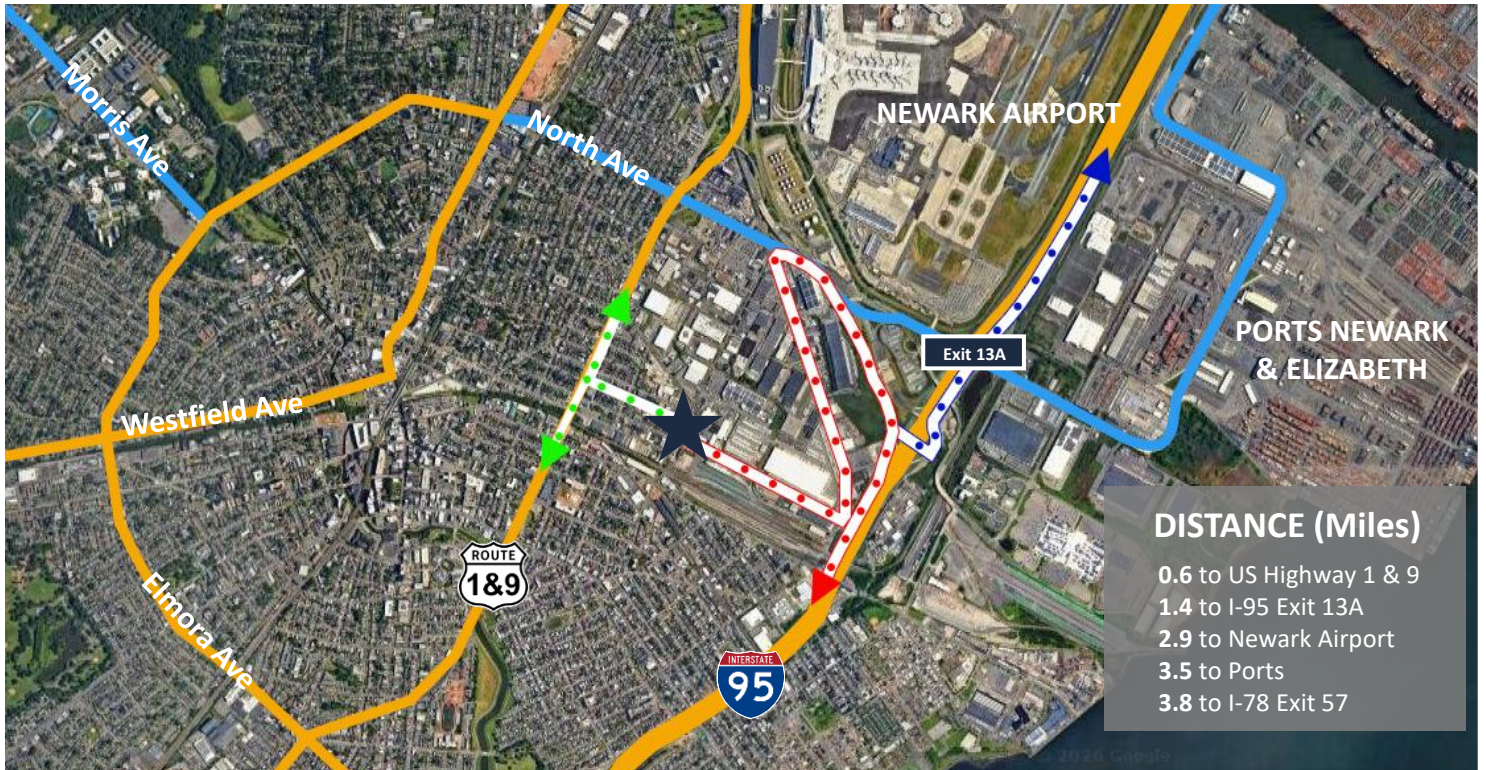
- Total Population: 2.46M
- Households: 915,894
- Median Household Income: \$104,177
- Average Household Size: 2.6
- Transportation to Work: 1.25M
- Labor Force: 1.98M

15 MILES

- Total Population: 6.85M
- Households: 2.75M
- Median Household Income: \$115,811
- Average Household Size: 2.4
- Transportation to Work: 3.64M
- Labor Force: 5.63M

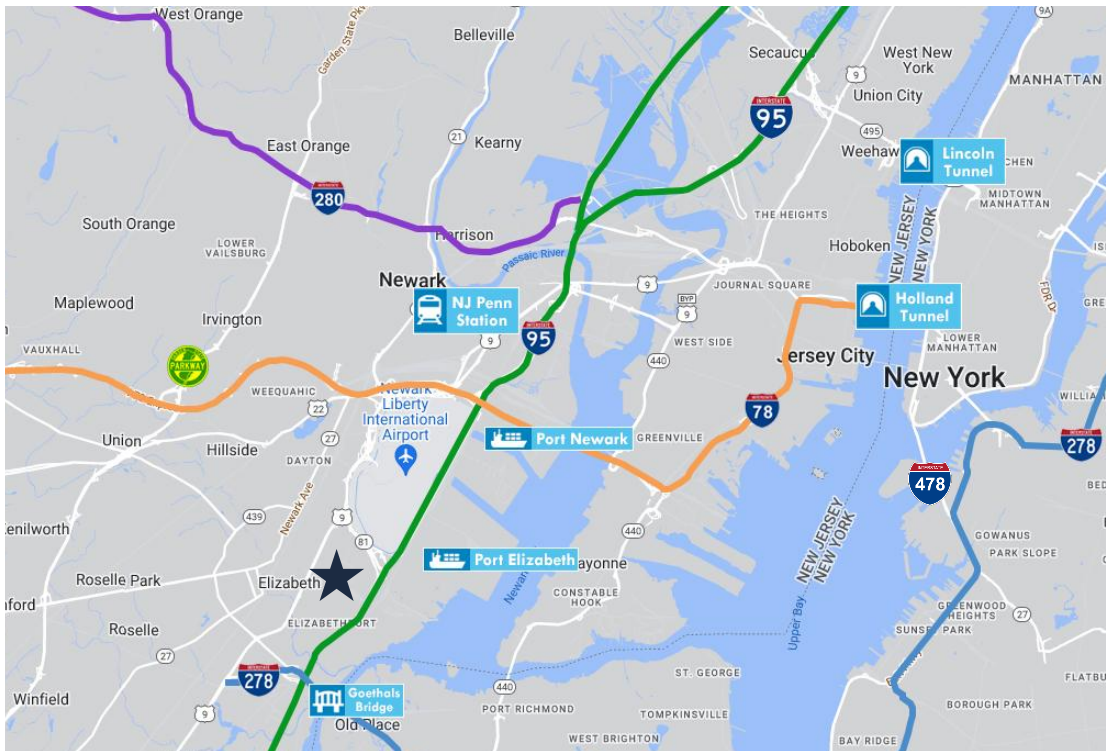
For additional property information or to arrange an inspection, please contact the exclusive brokers:

Kenneth F. Crimmins, CCIM, SIOR, Chairman, 973.379.6644 x 111, kfcrimmins@blauberg.com
Jason M. Crimmins, CCIM, SIOR, Chief Executive Officer, 973.379.6644 x 122, jmcrimmins@blauberg.com
Laura L. Crimmins, SIOR, Executive Director, 973.379.6644 x 142, lcrimmins@blauberg.com



DISTANCE (Miles)

- 0.6 to US Highway 1 & 9
- 1.4 to I-95 Exit 13A
- 2.9 to Newark Airport
- 3.5 to Ports
- 3.8 to I-78 Exit 57



ACCESSIBILITY

	4.2 MI I-278
	4.9 MI Goethals Bridge
	5.9 MI Newark Penn Station
	12.9 MI Holland Tunnel
	15.0 MI Lincoln Tunnel

For additional property information or to arrange an inspection, please contact the exclusive brokers:

Kenneth F. Crimmins, CCIM, SIOR, Chairman, 973.379.6644 x 111, kfcrimmins@blauberg.com
Jason M. Crimmins, CCIM, SIOR, Chief Executive Officer, 973.379.6644 x 122, jmcrimmins@blauberg.com
Laura L. Crimmins, SIOR, Executive Director, 973.379.6644 x 142, lcrimmins@blauberg.com

The information contained herein has been obtained from sources considered to be reliable, but no guarantee of its accuracy is made by this company. In addition, no representation is made respecting zoning, condition of title, dimensions, or any matters of a legal or environmental nature. Such matters should be referred to legal counsel for determination. Terms and conditions are subject to change without prior notice. Subject to errors and omissions.