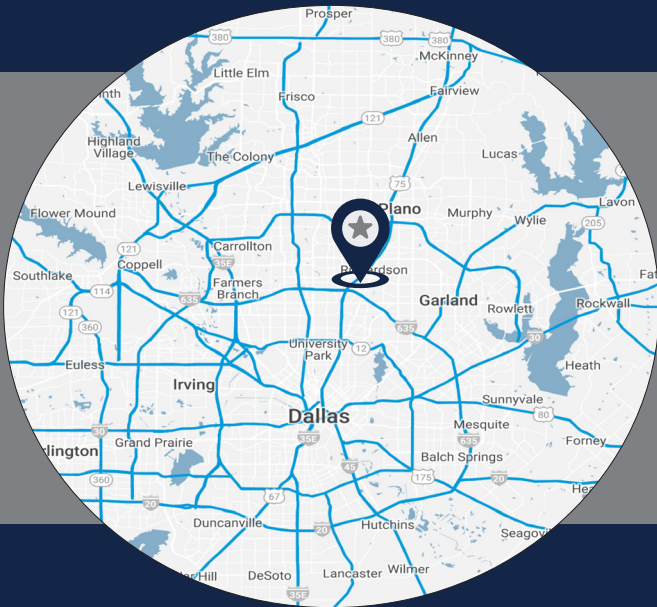


FOR LEASE



TI BUSINESS PARK

1400 S SHERMAN ST & 1351 TI BLVD | RICHARDSON, TX 75081



LISTING HIGHLIGHTS

- | | |
|----------------------|---|
| ADDRESS: | 1400 S Sherman St, 1351 TI Blvd |
| AVAILABLE SF: | +/- 100,206 SF |
| YEAR BUILT: | 1981 |
| PARKING: | 233 Parking spaces |
| NOTES: | <ul style="list-style-type: none">• Three buildings• Easy access to Central Expressway and Hwy 635 |

FOR LEASING INFORMATION:

Jessica Reinhardt
jreinhardt@lee-associates.com
972.934.4005
972.891.5236

Susan Cancemi
scancemi@lee-associates.com
972.934.4005
469.236.3386

OWNED BY:



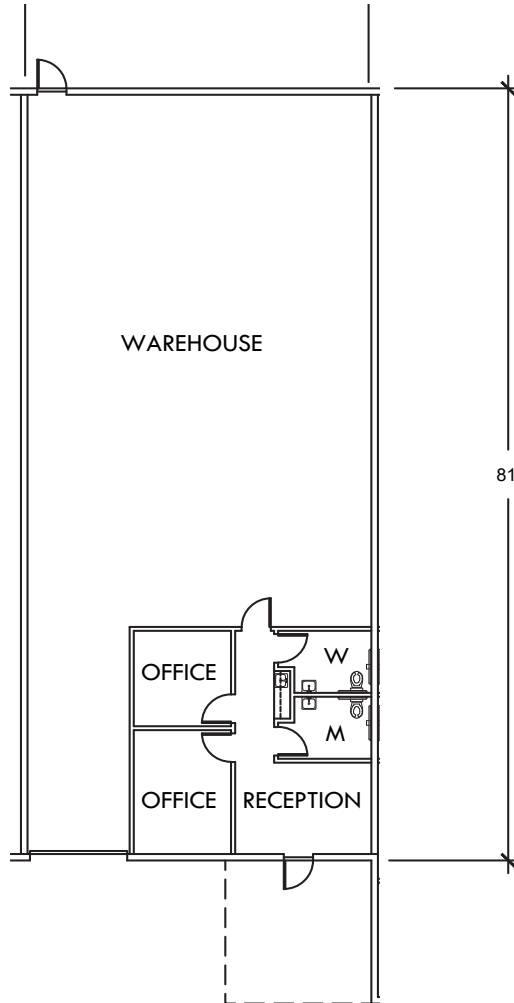
LEASED BY:



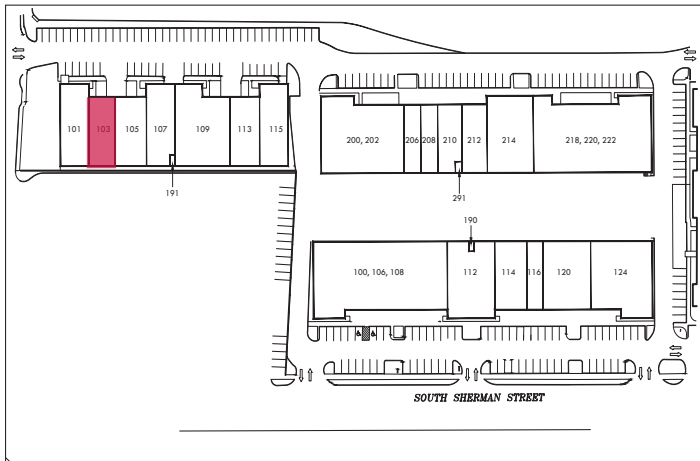
SUITE 103

2,895 SF

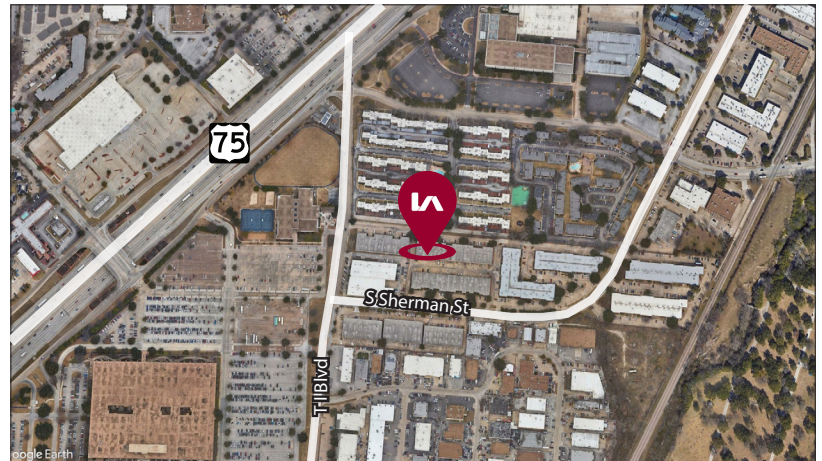
- 1 Grade level door



SITE PLAN



AERIAL



All information furnished regarding property for sale, rental or financing is from sources deemed reliable, but no warranty or representation is made to the accuracy thereof and same is submitted to errors, omissions, change of price, rental or other conditions prior to sale, lease or financing or withdrawal without notice. No liability of any kind is to be imposed on the broker herein.

Jessica Reinhardt

jreinhardt@lee-associates.com

972.934.4005

972.891.5236

Susan Cancemi

scancemi@lee-associates.com

972.934.4005

469.236.3386

OWNED BY:

CIP REAL ESTATE

LEASED BY:

LEE & ASSOCIATES
COMMERCIAL REAL ESTATE SERVICES