

**5%**  
CO-BROKE



## 54 NORTH 45TH AVENUE

PHOENIX, ARIZONA 85043

14,557 Square Feet, Suites A & B

\$1.14 Per Square Foot, Modified Gross

A-1 Zoning

Dock High Loading

Minimal Office

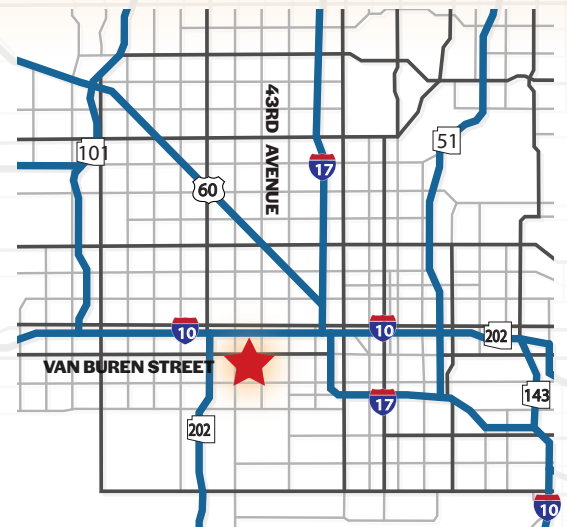
18' Clear Height

Excellent Freeway Access

Evap Cooled Warehouse

Monument Signage

5% Co-Broke to Tenant Rep Broker with Executed Lease



**Adam Shteir**

Partner  
602.769.0521  
adam@citywidecre.com

**Todd Hamilton, SIOR, CCIM**

Managing Partner/Designated Broker  
602.909.8759  
todd@citywidecre.com

**Christian Butura**

Sales & Leasing  
480.290.8377  
cb@citywidecre.com

**Aimee Sanderson, CCIM**

Sales & Leasing  
480.678.0809  
aimee@citywidecre.com

1645 East Missouri Avenue, Suite 230 • Phoenix, Arizona 85016 • 602.313.1000 • citywidecre.com



**Adam Shteir**

Partner  
602.769.0521  
adam@citywidecre.com

**Todd Hamilton, SIOR, CCIM**

Managing Partner/Designated Broker  
602.909.8759  
todd@citywidecre.com

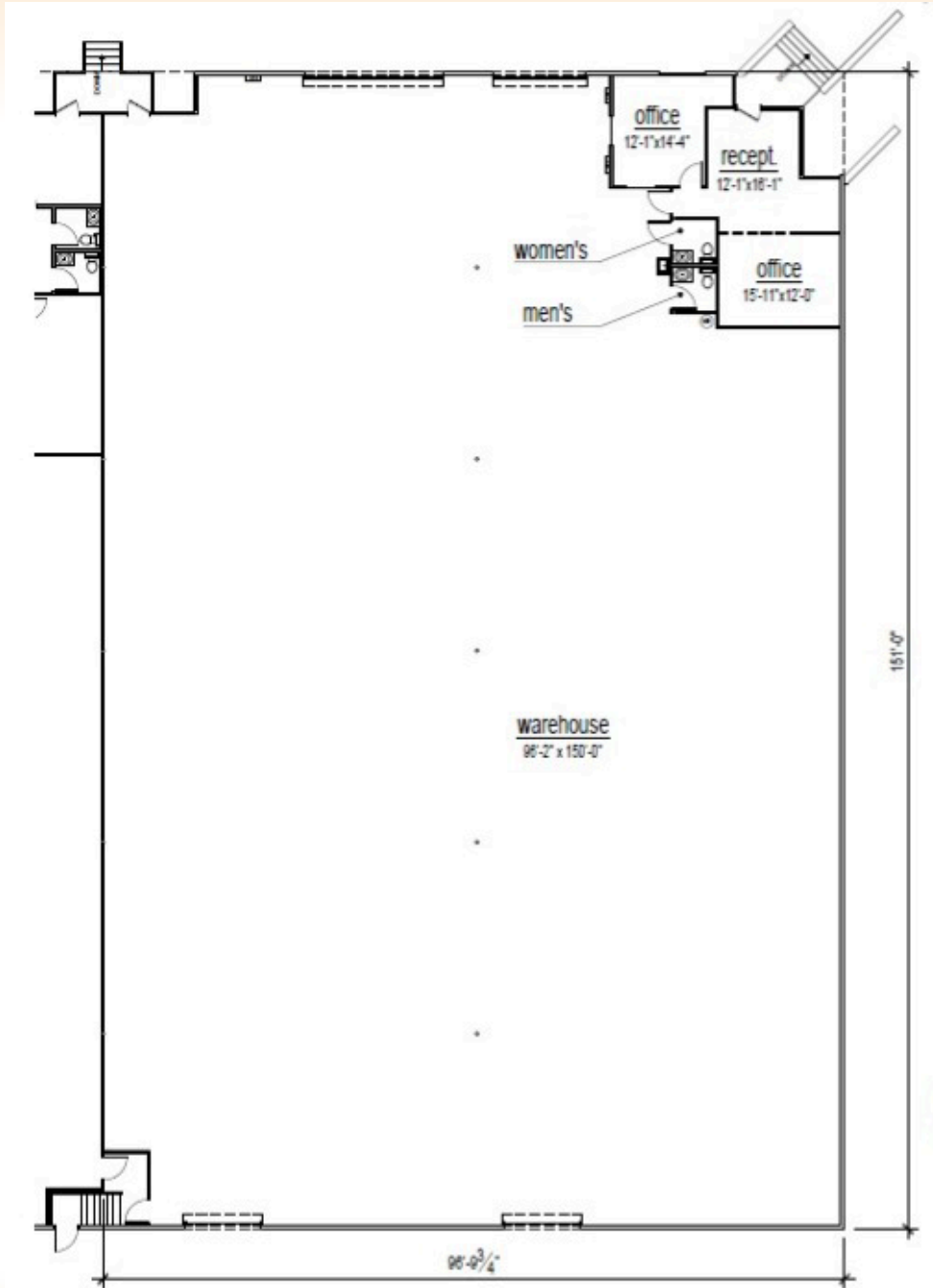
**Christian Butura**

Sales & Leasing  
480.290.8377  
cb@citywidecre.com

**Aimee Sanderson, CCIM**

Sales & Leasing  
480.678.0809  
aimee@citywidecre.com

1645 East Missouri Avenue, Suite 230 • Phoenix, Arizona 85016 • 602.313.1000 • citywidecre.com



**Adam Shteir**

Partner  
602.769.0521  
adam@citywidecre.com

**Todd Hamilton, SIOR, CCIM**

Managing Partner/Designated Broker  
602.909.8759  
todd@citywidecre.com

**Christian Butura**

Sales & Leasing  
480.290.8377  
cb@citywidecre.com

**Aimee Sanderson, CCIM**

Sales & Leasing  
480.678.0809  
aimee@citywidecre.com

1645 East Missouri Avenue, Suite 230 • Phoenix, Arizona 85016 • 602.313.1000 • citywidecre.com