

REMINGTON VILLAGE

110 Remington Dr | Oviedo, FL 32765
Pre-Leasing New Office/Medical



LQ Commercial
REAL ESTATE SERVICES

LQCRE.COM



**\$35.00 PSF
RATE**

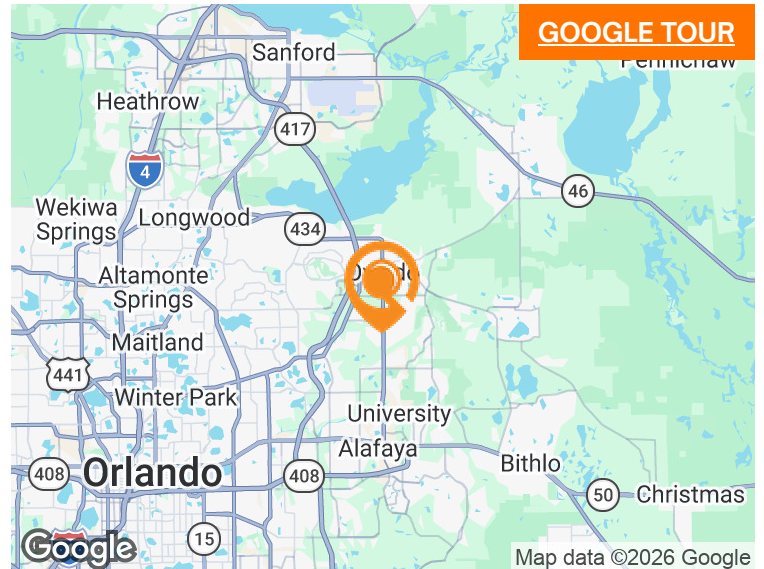


**1,000 - 6,300 SF
SIZE AVAILABLE**



**45,000 AADT
ALAFAYA TRL (SR-436)**

- Pre-leasing new office/medical space from 1,000 - 6,300 SF in Oviedo, FL
- Three miles from the newly renovated Oviedo Medical Center (44,083 SF addition completed in late 2025)
- Convenient access to Alafaya Trl (SR-436) (45,000 AADT) providing connectivity to SR-417 (65,300 AADT), Orlando, and UCF
- Strategically positioned in Oviedo, one of Seminole County's fastest growing suburbs
- Robust population of 194,664 in a five mile radius and strong household income of \$122,203
- A variety of shopping, dining, and entertainment options with Oviedo Mall four miles away
- Less than two miles from University of Central Florida (UCF)



GOOGLE TOUR

Map data ©2026 Google

PROPERTIES.LQCRE.COM/REMINGTON-VILLAGE



**5-MI TOTAL POPULATION
197,664**



**5-MI AVG HH INCOME
\$122,203**



**5-MI ESTIMATED HH
68,713**

 **LQ Commercial**
REAL ESTATE SERVICES
500 Winderley Pl #104
Maitland, FL 32751
LQCRE.COM

Julia Sosa
Founding Principal - Orlando
D: 407.775.4358
C: 407.257.8246
jsosa@lqcre.com

Eva Royal
Principal, Senior Associate
D: 407.705.2217
C: 407.421.3532
eroyal@lqcre.com

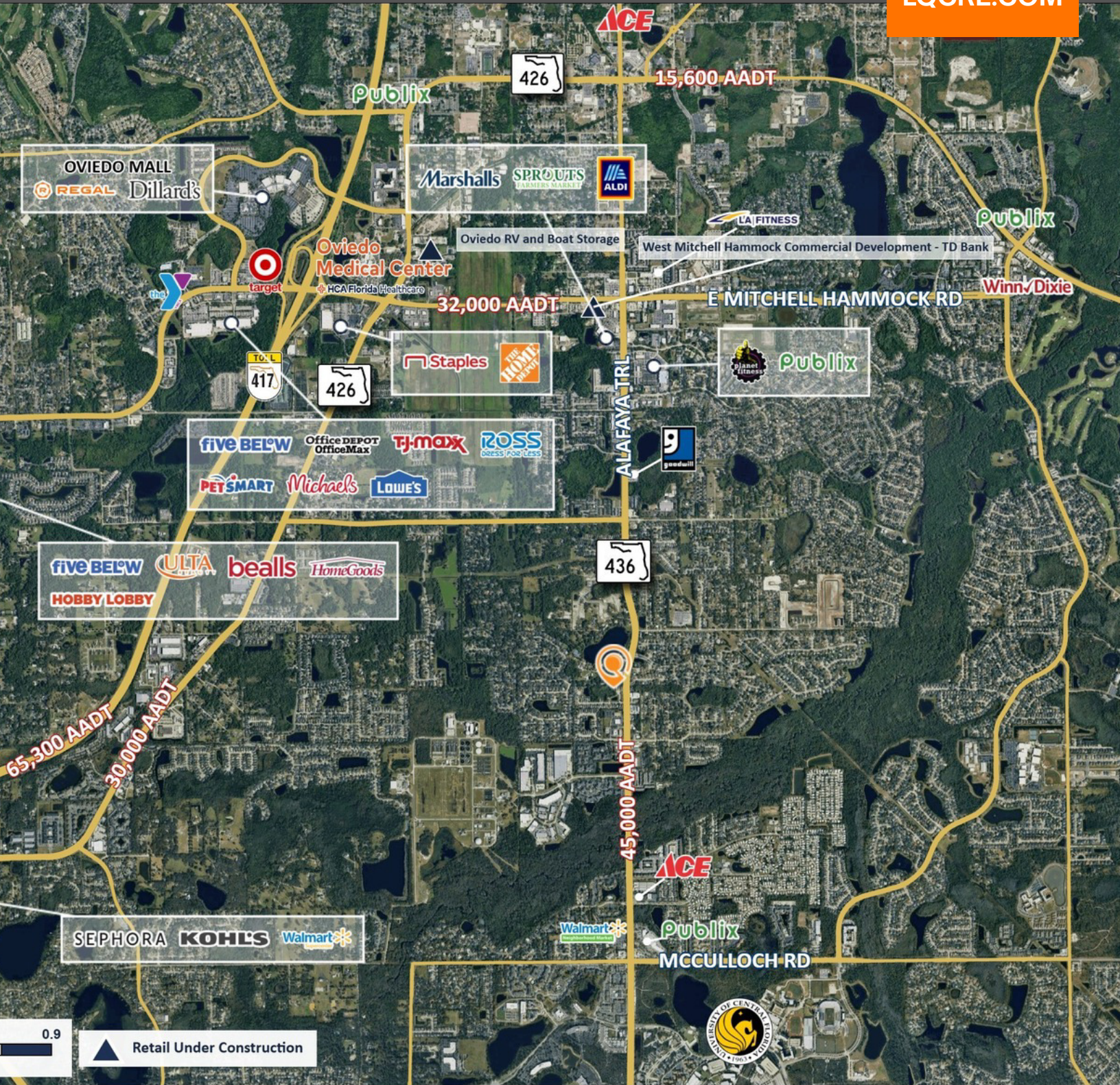
REMINGTON VILLAGE

110 Remington Dr | Oviedo, FL 32765
Pre-Leasing New Office/Medical



LQ Commercial
REAL ESTATE SERVICES

LQCRE.COM



 **LQ Commercial**
REAL ESTATE SERVICES
500 Winderley Pl #104
Maitland, FL 32751
LQCRE.COM

Julia Sosa
Founding Principal - Orlando
D: 407.775.4358
C: 407.257.8246
jsosa@lqcre.com

Eva Royal
Principal, Senior Associate
D: 407.705.2217
C: 407.421.3532
eroyal@lqcre.com