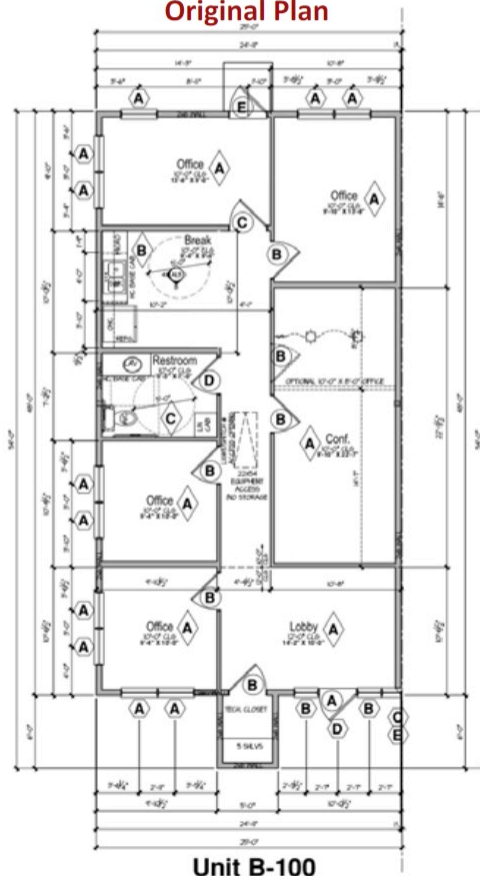


# Floor Plan and Change Orders

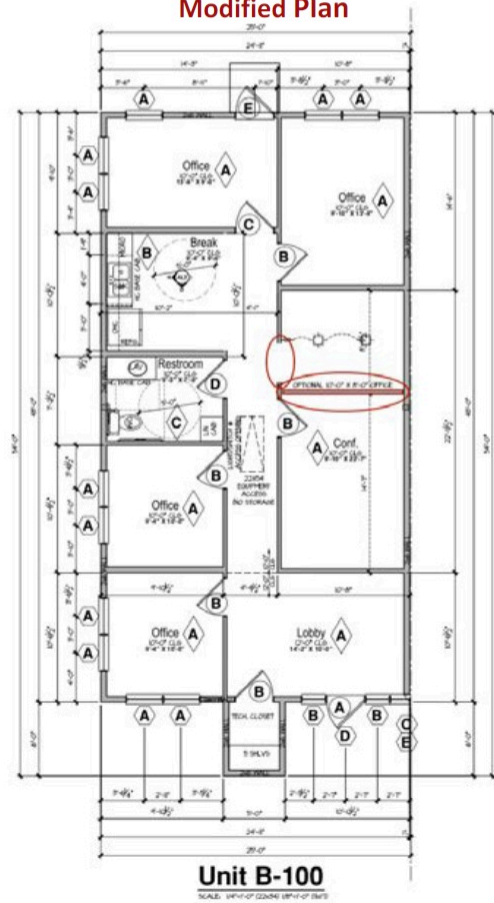
## Professional Office 1,230 Sqft - Office Building B

<b>Suite #</b>	<b>2100</b>	<b>Buyer</b>	<b>Fort Glenn Services, LLC</b>
----------------	-------------	--------------	---------------------------------

**Original Plan**



**Modified Plan**



**CONSTRUCTION ASSEMBLIES:**

- T** THE FOLLOWING KEYNOTES REFERENCE THE SYMBOLS AS SHOWN ON FLANG.
- A. ROOF CONSTRUCTION. METAL ROOF ON UNDERLAYMENT ON ROOF SHEATHING ON ROOF FRAMING MEMBERS (AS NOTED ON FRAMING PLANS PER ENG). CEILING: 5/8" GYPSUM BOARD WITH INSULATION ABOVE.
  - B. TYPICAL STUCCO WALL CONSTRUCTION. 5 COAT STUCCO ON METAL LATH INSTALLED PER MFR'S SPECS. OVER WATER RESISTANT BARRIER ON EXTERIOR. WALL SHEATHING ON 2x4 OR 2x6 STUDS, 1/2" O.G. W/ INSULATION IN CAVITIES. INTERIOR: 1/2" GYPSUM BOARD.
  - B2. TYPICAL STONE VENEER WALL CONSTR. ADHERED SYNTHETIC STONE VENEER (INSTALLED PER MFR'S SPECS.) OVER WATER RESISTANT BARRIER ON EXTERIOR. WALL SHEATHING ON 2x4 OR 2x6 STUDS, 1/2" O.G. W/ INSULATION IN CAVITIES. INTERIOR: 1/2" GYPSUM BOARD.
  - C. CONCRETE SLAB CONSTRUCTION. CONCRETE SLAB OVER 6 MIL. POLYETHYLENE VAPOUR BARRIER OVER 4" MINIMUM GRAVELAR FILL. SEE ENG. FLANG FOR FOUNDATION PLAN.