



VALUE INDUSTRIAL PARTNERS, LLC

Industrial Real Estate Investment, Brokerage and Management

477 W. Wrightwood Avenue, Elmhurst, Illinois 60126 TEL: 630-333-1900 FAX: 630-333-1910



1151 Atlantic Drive, Unit 3 West Chicago, Illinois

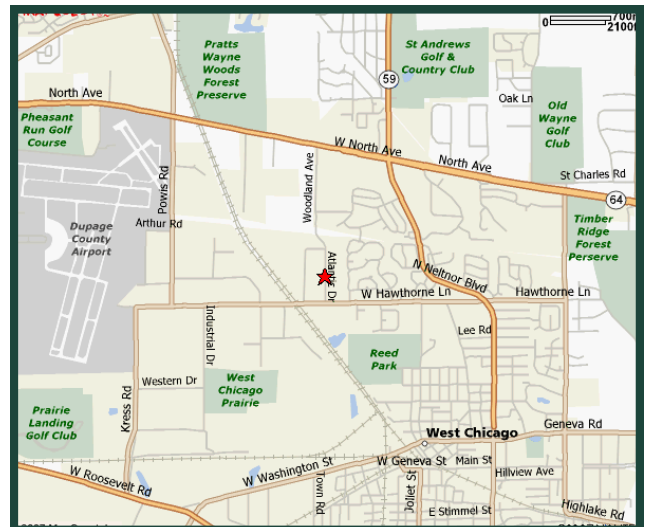
FOR LEASE 9,375 SF

Building Specifications

Available Sizes:	9,375 Square Feet
Building Size:	50,000 Square Feet
Office:	+/- 10%
Ceiling Height:	18'
Loading:	2 Docks 1 Drive-in Door (12' X 14')
Power:	800 Amps
Sprinklered:	Yes
Real Estate Taxes:	Included with Current Stop
CAM:	Included with Current Stop

Comments:

- Professionally owned and managed
- Great loading
- Heavy power



For Further Information, Please Contact:

Brian P. Gedvilas, Director of Leasing
bgedvilas@valueindustrialpartners.com

Brian M. Liston, Principal
bliston@valueindustrialpartners.com

TEL: 630-333-1900 FAX: 630-333-1910

Officers of the firm have an ownership interest in this property.
Submitted subject to error, change in status, or withdrawal without notice.

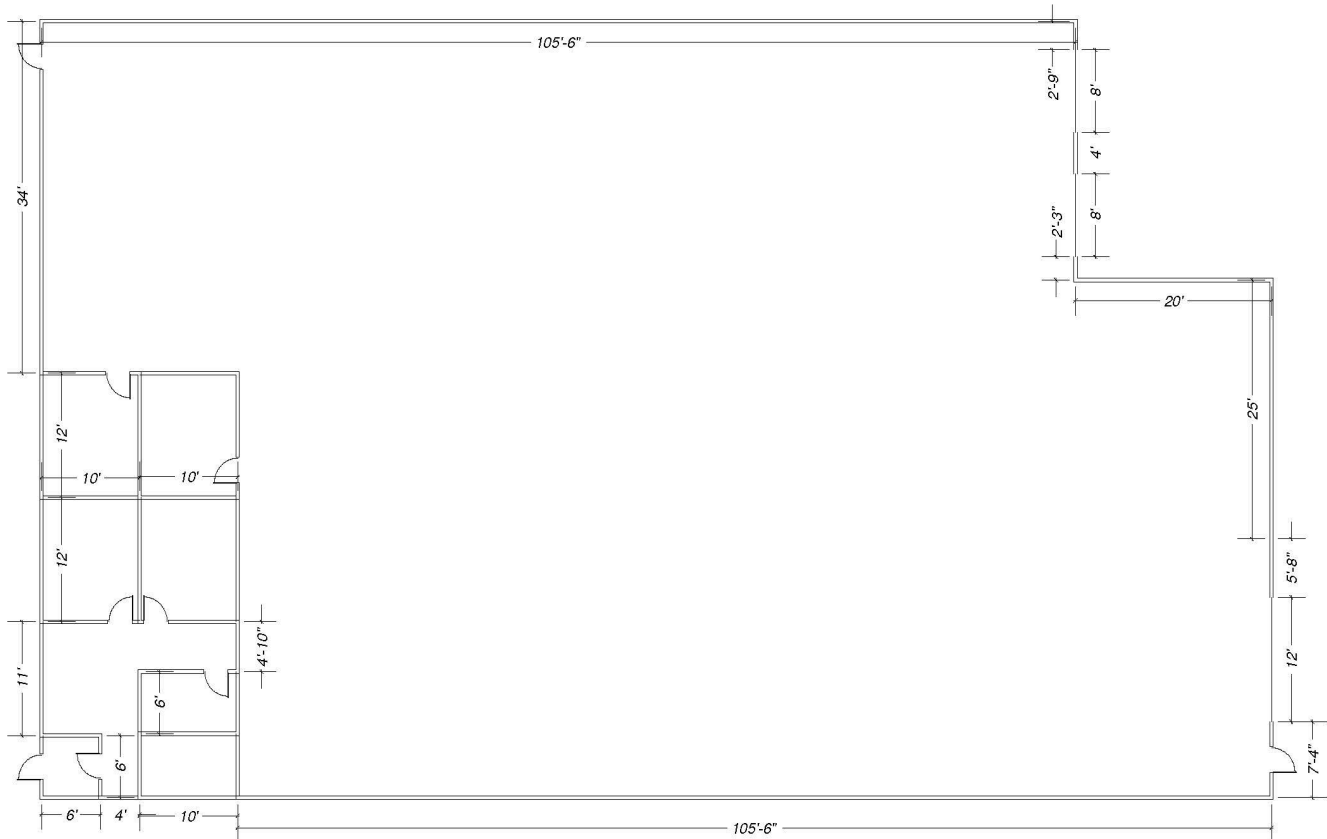


VALUE INDUSTRIAL PARTNERS, LLC

Industrial Real Estate Investment, Brokerage and Management

477 W. Wrightwood Avenue, Elmhurst, Illinois 60126 TEL: 630-333-1900 FAX: 630-333-1910

LAYOUT



FOR ILLUSTRATION PURPOSES ONLY

Officers of the firm have an ownership interest in this property.
Submitted subject to error, change in status, or withdrawal without notice.