

FOR LEASE

CLASS A EXECUTIVE OFFICE SPACE

5331 Primrose Lake Circle Tampa FL, 33647



PROPERTY OVERVIEW



- 2-story Upscale Executive Office Building
- Superbly Landscaped Professional Park nestled along the Tranquil Banks of Primrose Lake
- Flexible Range of Suite Sizes 155-1,370 SF
- Responsive On-site Management and Maintenance
- Convenient Access to Interstate 75, Interstate 4, and within a 5 mile radius of USF Campus
- Exquisite Grand Entrances with Custom High End Finishes throughout the building
- Frontier FiOS Smart Park
- Access to 24 hour Controlled Access and Conference Rooms
- Ample Parking

FLOOR PLAN

5331 PRIMROSE LAKE CIRCLE

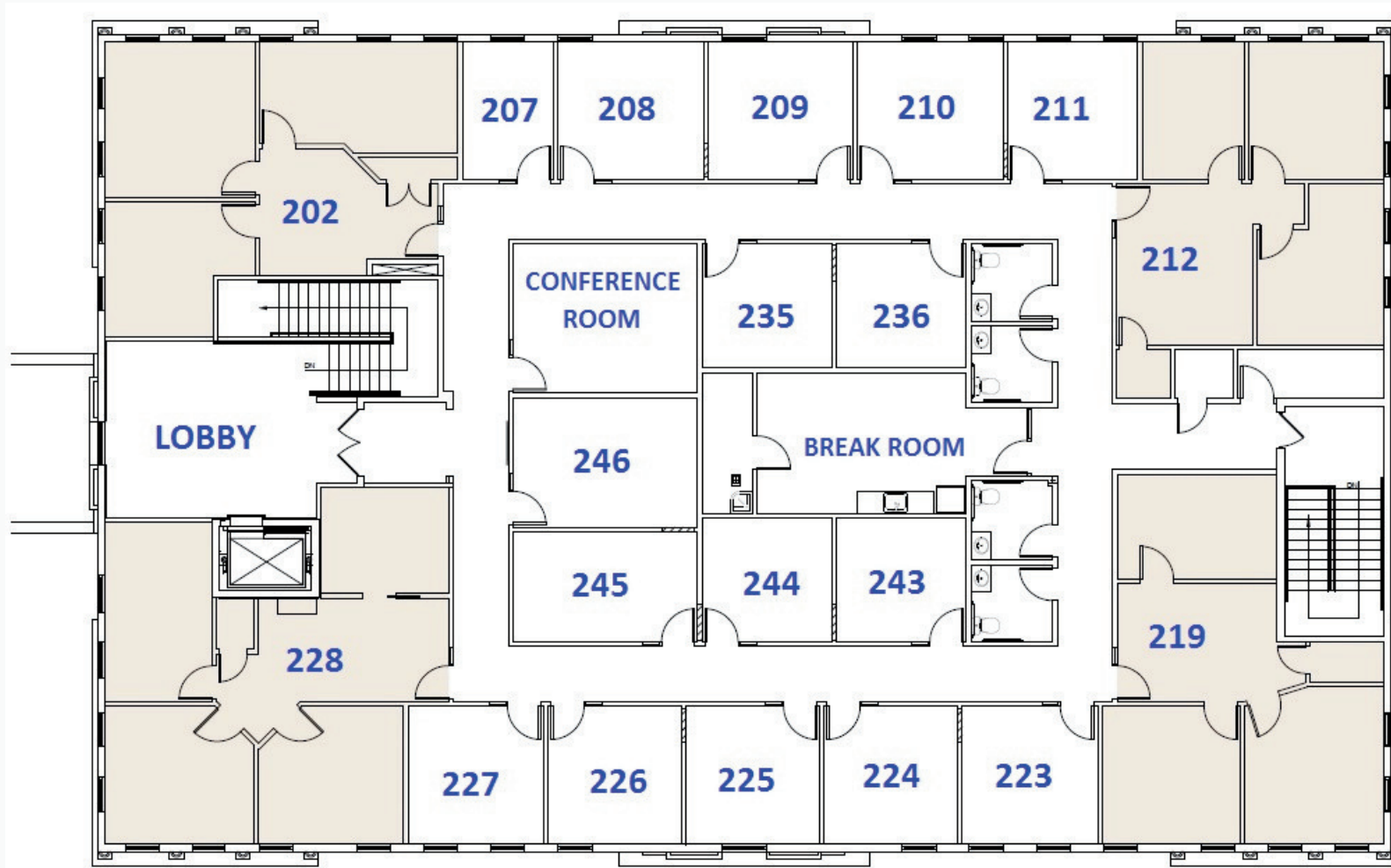
FIRST FLOOR



FLOOR PLAN

5331 PRIMROSE LAKE CIRCLE

SECOND FLOOR



LOCATION MAP

5331 PRIMROSE LAKE CIRCLE



PRICING OVERVIEW

APPLICATION FEE	One time fee, Covers background check.	\$150
ADMIN FEE	One time fee, Covers key card and signage.	\$200
RENT	Monthly base rent fee. (This will be monthly rent price with internet and sales tax excluded).	SPECIFIC TO UNIT
INTERNET	Monthly, TPPC internet already set up. 2G internet speed. Fire wall between each office for security purposes. If business requires landline, phone must be voice over IP.	\$65
SALES TAX	Monthly, 3.5% of Sales Tax.	SPECIFIC TO UNIT
INSURANCE	Monthly, Insurance fee only if business does not already have Insurance . If business already has insurance, please provide COI.	\$25
SECURITY DEPOSIT	One time Fee, Refundable at move out based on damages.	EQUAL TO FIRST MONTH'S RENT

For additional
information,
please contact

AVAILABLE SPACE

5331 PRIMROSE LAKE CIRCLE

EXECUTIVE SUITES

Get More Information



Amber Peterson
Marketing Manager
(813) 876-7697 EXT 1
marketing@tampapalmscenter.com



Tampa Palms Professional Center
17427 Bridge Hill Court, Suite C
Tampa, FL 33647
www.tampapalmscenter.com

