



For Lease - Freezer/Cooler Warehouse

Contact us:

Nathan Monan

Senior Broker
+1 501 372 6161
nathan.monan@colliers.com

Darren Ross

Vice Chair, Principal
+1 404 877 9279
darren.ross@colliers.com

James Feiber

Associate
+1 404 991 4887
james.feiber@colliers.com

Stewart Metcalfe

EVP, Sales Representative
+1 416 274 8987
stewart.metcalfe@colliers.com

1400 Gregory St
North Little Rock, AR 72114

165,552 SF Available for Lease

- Rack storage and ammonia refrigeration systems
- Building height: 40'
- 20,694 pallet positions
- -10 degrees freezer capability
- 192 blast freezer pallet locations
- Automatic sprinkler protection

Colliers

1 Allied Drive, Suite 1500
Little Rock, AR 72202
P: +1 501 372 6161

Copyright © 2025 Colliers International. Information herein has been obtained from sources deemed reliable, however its accuracy cannot be guaranteed. The user is required to conduct their own due diligence and verification.

For Lease

Property Highlights

Address: 1400 Gregory St, Little Rock, AR 72114

PID: 33N-207-03-002-00

Building SF: 165,552

Lot Size: 50.62 AC

Year Built: 1996

Loading: 20

Clear Height: 32-40

Construction: 2020

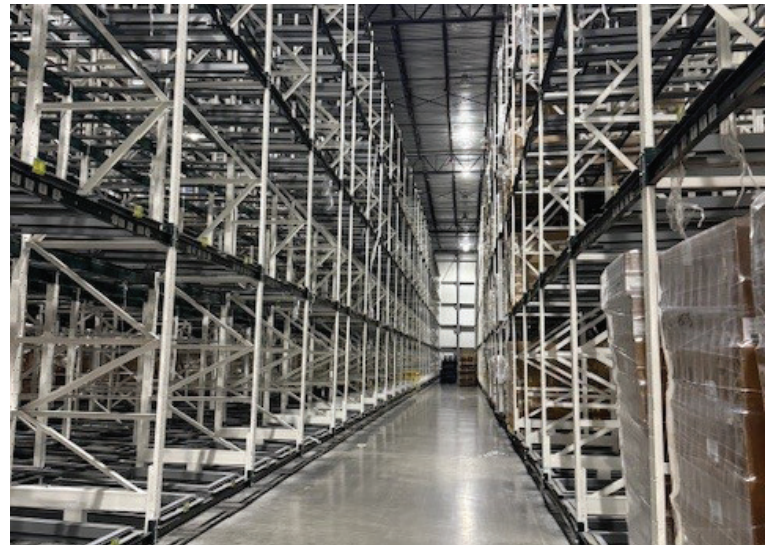
Parking: 50

Sprinkler: -Freezer/cooler: dry systems
-Non-refrigerated areas: wet system

Column Spacing: 30' W x 40' D

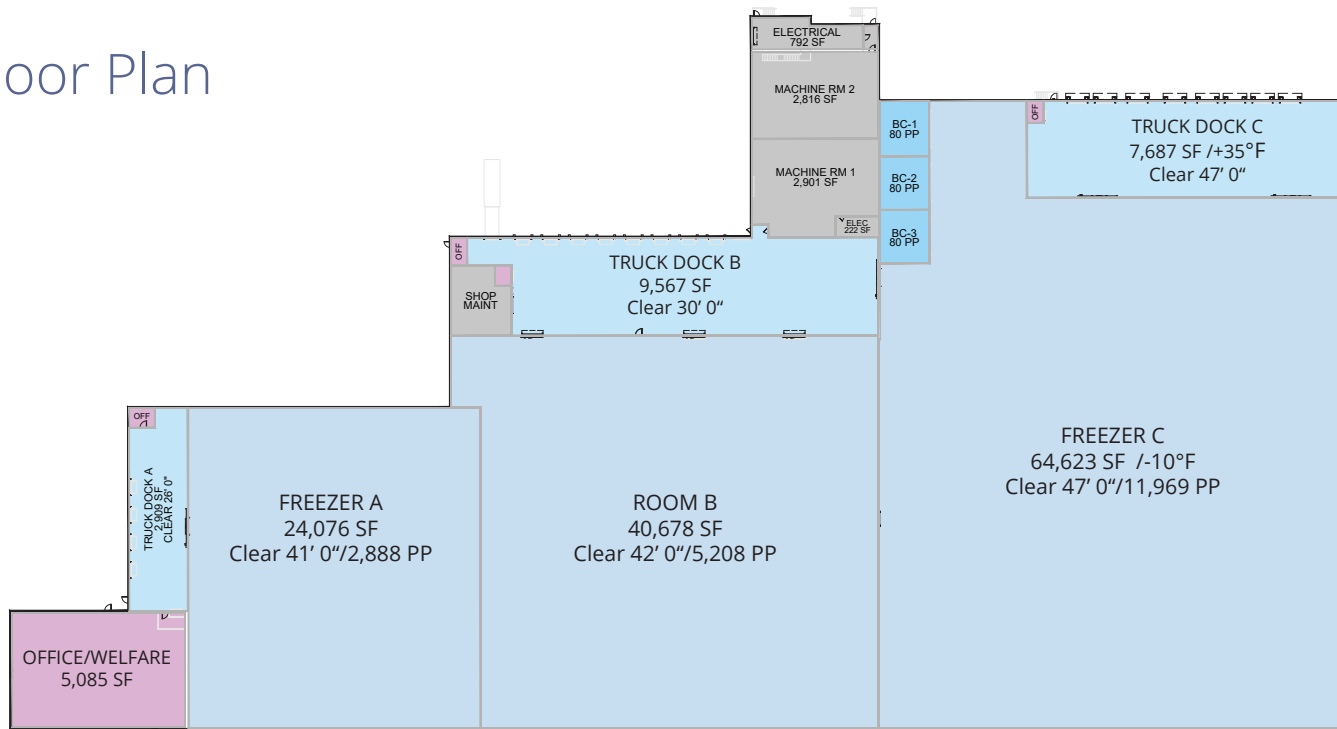
Power: 2500-2000 KVA

Rail: Union Pacific Railroad

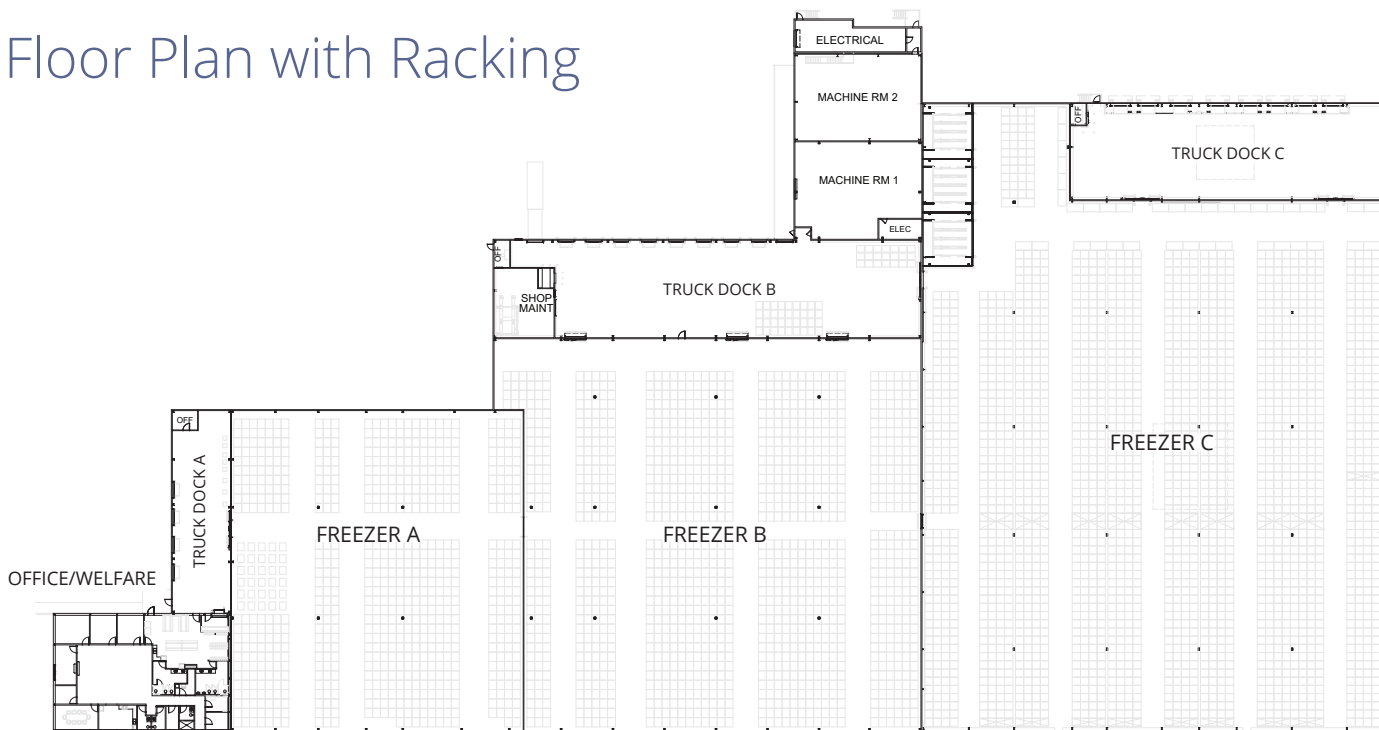


Property Plans

Floor Plan

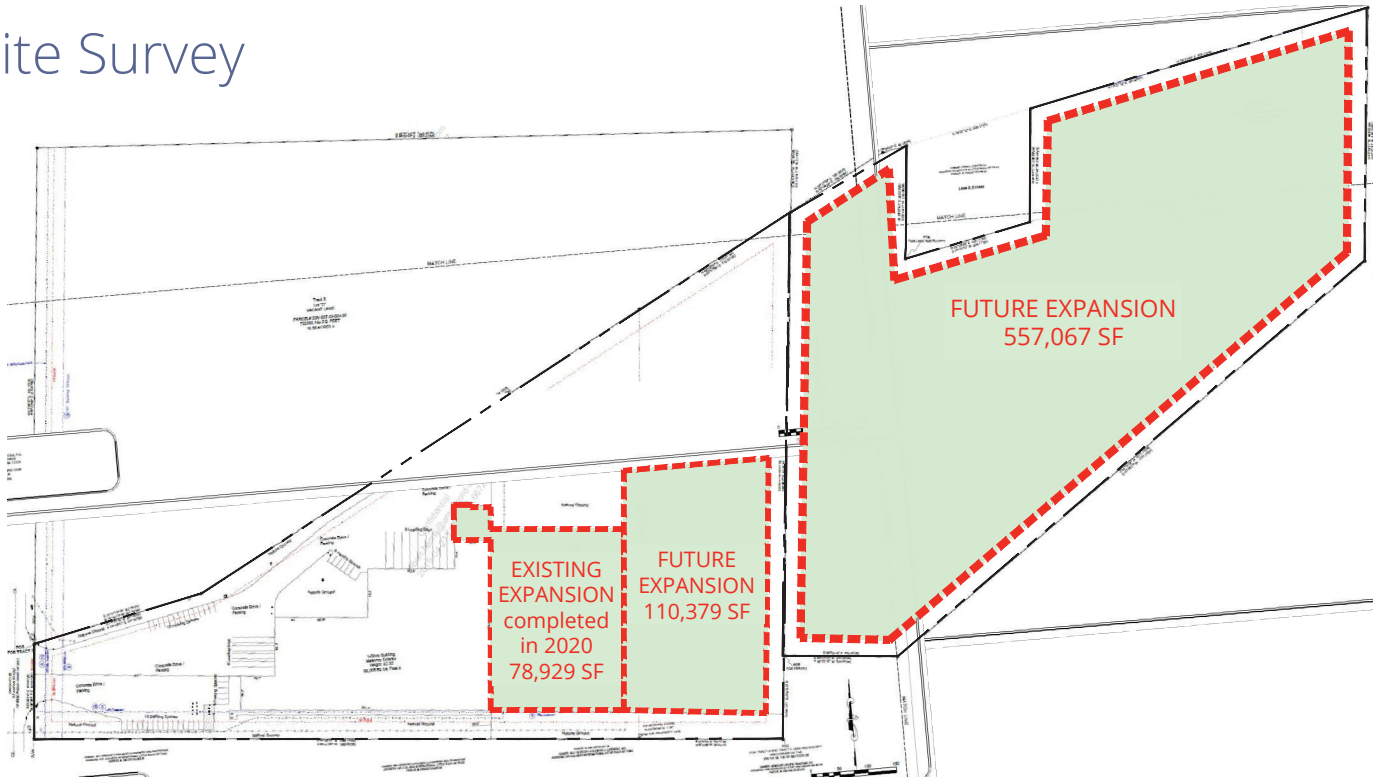


Floor Plan with Racking



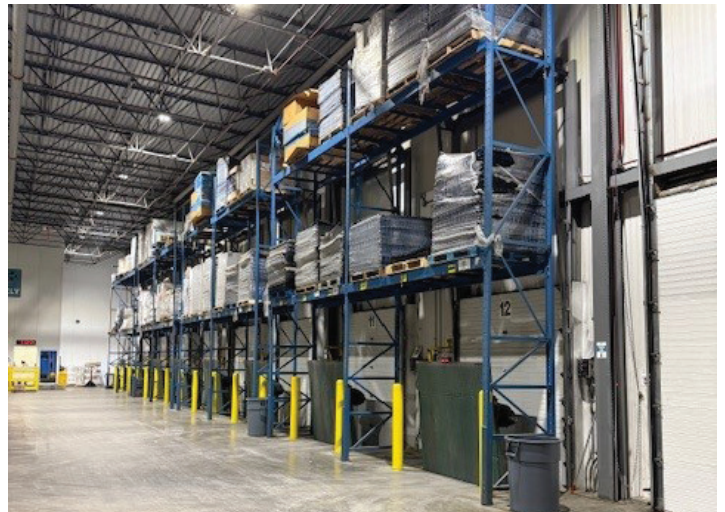
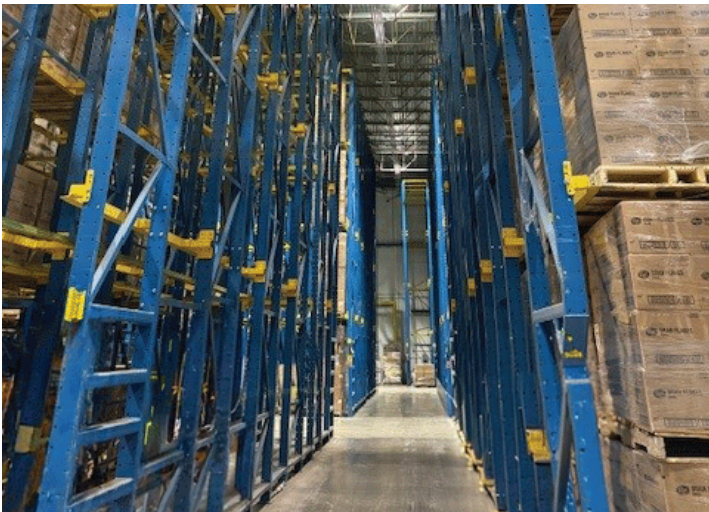
Property Plans

Site Survey



NORTH VIEW

Property Gallery



Location Overview



2 MILES
to I-30 & I-40



2 MILES
to UP Railroad



8 MILES
to LIT Airport



6 MINS
Downtown Little
Rock

Demographics - 2025

	1 Mile	3 Miles	5 Miles
Estimated Population	1,993	45,023	104,643
Workforce: Ages 16+	792	24,344	53,183
Average HH Income	\$40,546	\$76,025	\$85,999
Median HH Income	\$21,350	\$52,625	\$58,665
Businesses	174	4,543	7,268