

5329 CHAMBERLIN STREET  
PORTAGE, MICHIGAN

SPECIALTY FOR SALE  
4,038 Square Feet Available



**SIGNATURE  
ASSOCIATES**  
KNOW SIGNATURE | KNOW RESULTS

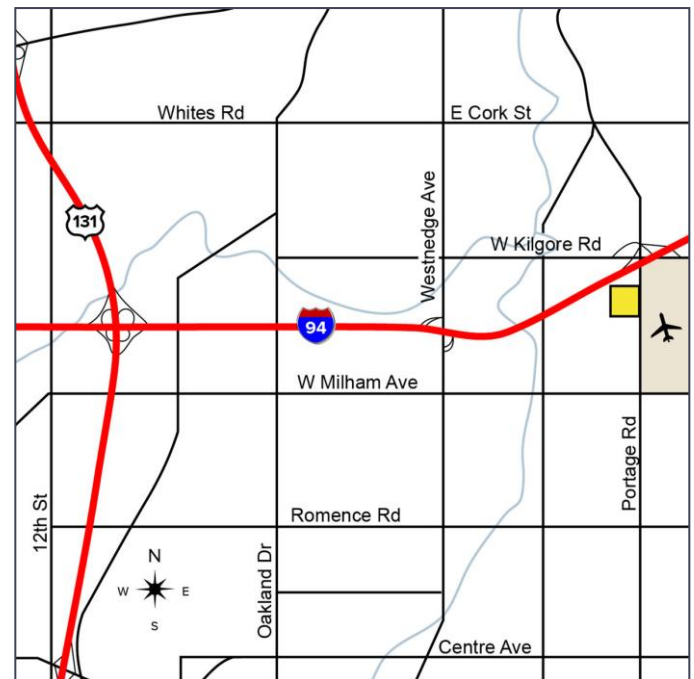
**CHURCH**



## PROPERTY FEATURES

- 4,038 main floor square footage
- Located on 0.303 acres
- Zoned R-1B
- Sales Price: \$649,000

**Comments:** Beautiful church in the heart of Portage, MI. Bi-Level building is uniquely situated in a residential neighborhood, near Portage Road and I-94 Interchange. The lower level is a functional space with 5 classrooms and open space for a variety of uses. There are 2 restrooms and a small kitchenette near play area. The main level is an open Sanctuary with vaulted ceilings, hardwood floors, a stage area with handicap access and also two restrooms. Site has approximately 20 parking spaces. Great for redevelopment or church. Basement gives you double the square footage.



For more information, please contact:

**JOE RIZQALLAH**  
(616) 822 6310  
jrizqallah@signatureassociates.com

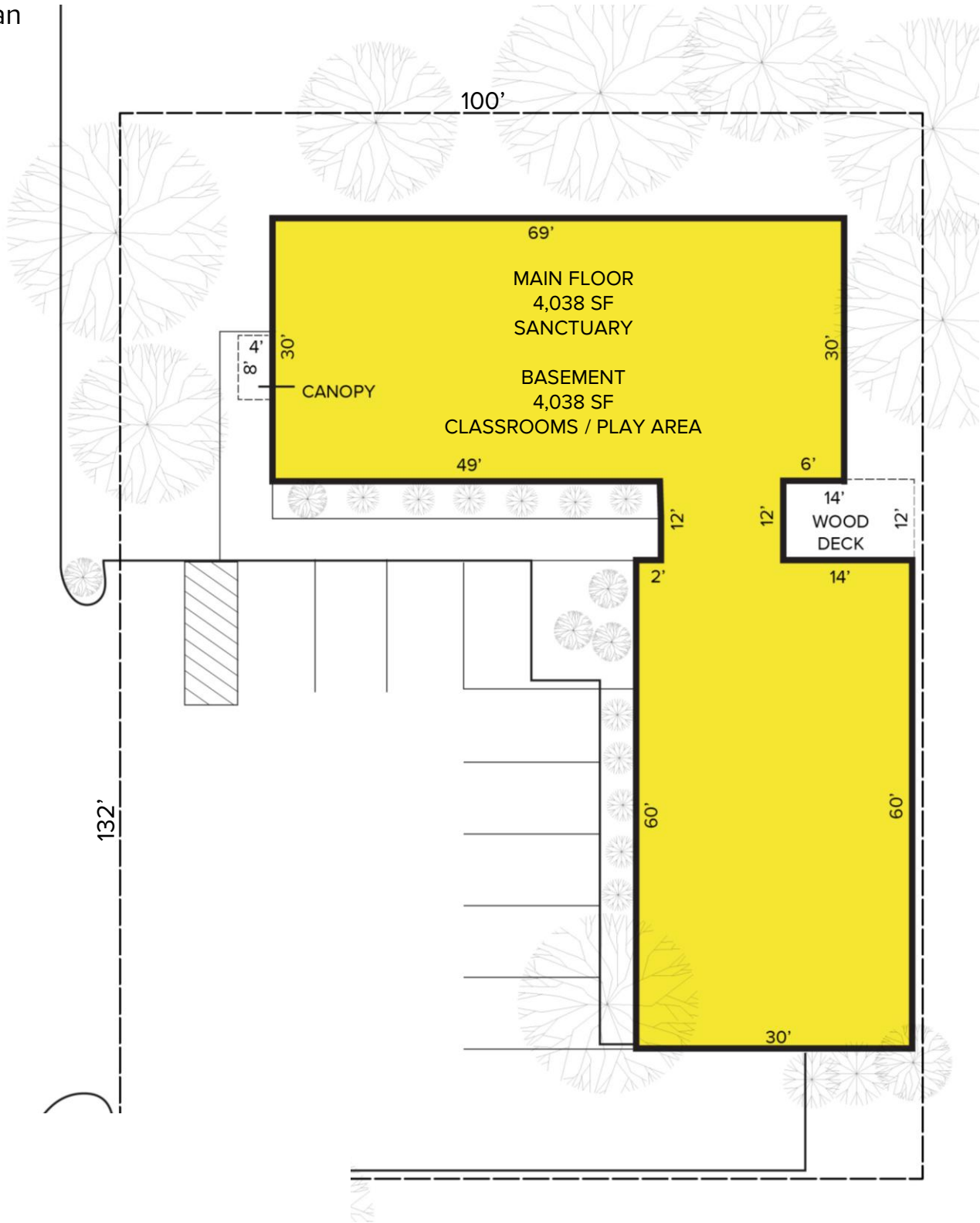
**SIGNATURE ASSOCIATES**  
1188 East Paris Ave SE, Suite 220  
Grand Rapids, MI 49546  
www.signatureassociates.com

# 5329 Chamberlin Street – Portage, MI

Specialty for Sale

4,038  
Square Feet  
AVAILABLE

## Site Plan



For more information, please contact:

**JOE RIZQALLAH**  
(616) 822 6310  
jrizqallah@signatureassociates.com

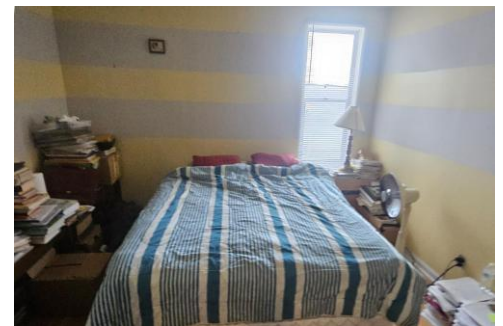
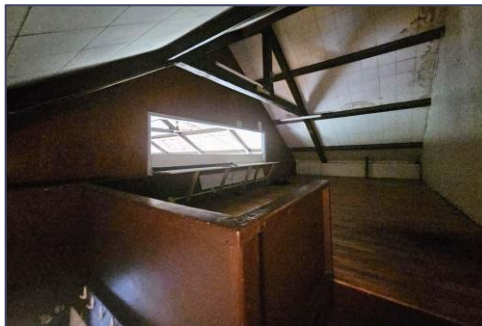
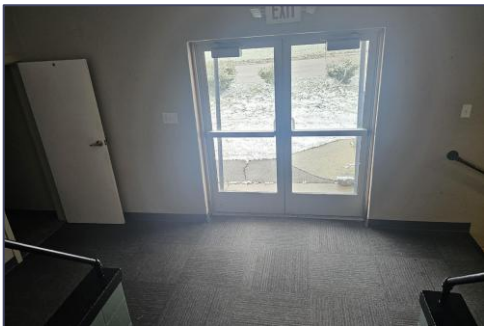
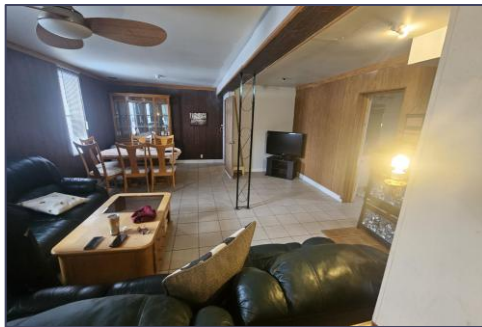
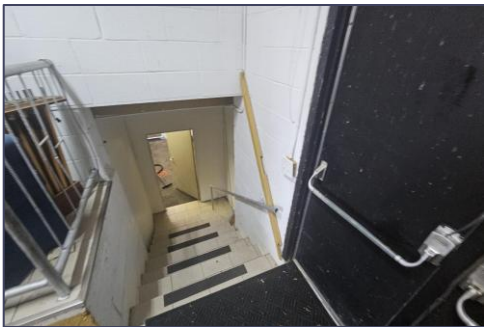
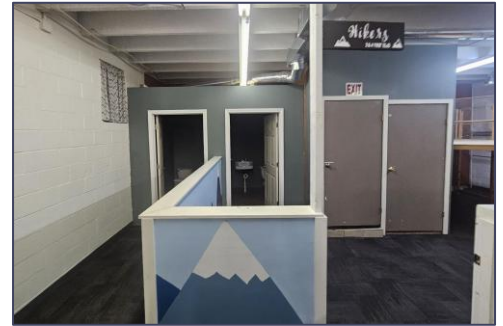
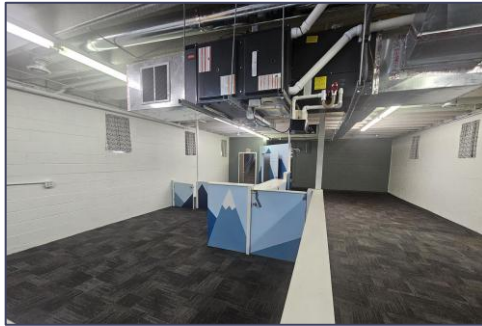
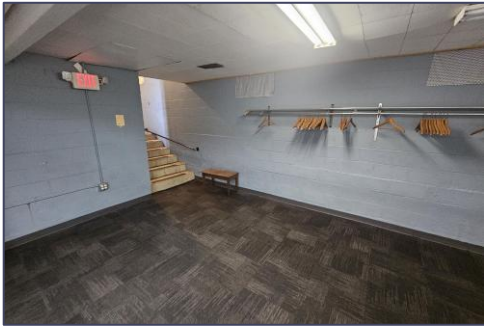
**SIGNATURE ASSOCIATES**  
1188 East Paris Ave SE, Suite 220  
Grand Rapids, MI 49546  
www.signatureassociates.com

# 5329 Chamberlin Street – Portage, MI

## Specialty for Sale

4,038  
Square Feet  
AVAILABLE

### Interior Photos



For more information, please contact:

**JOE RIZQALLAH**  
(616) 822 6310  
jrizzqallah@signatureassociates.com

**SIGNATURE ASSOCIATES**  
1188 East Paris Ave SE, Suite 220  
Grand Rapids, MI 49546  
www.signatureassociates.com

# 5329 Chamberlin Street – Portage, MI

Specialty for Sale

4,038  
Square Feet  
AVAILABLE

## Aerial



### DEMOGRAPHICS

	POPULATION	MED. HH INCOME
1 MILE	2,831	\$66,724
3 MILE	47,907	\$65,316
5 MILE	133,686	\$69,862

For more information, please contact:

**JOE RIZQALLAH**  
(616) 822 6310  
jrizqallah@signatureassociates.com

**SIGNATURE ASSOCIATES**  
1188 East Paris Ave SE, Suite 220  
Grand Rapids, MI 49546  
www.signatureassociates.com