

2307 BROADWAY

BETWEEN WEST 83rd AND WEST 84th STREETS



Kolorban

SILVER MIRROR & FACIAL BARI



MADISONREED®

2307 BROADWAY

BETWEEN WEST 83rd AND WEST 84th STREETS

PROPERTY HIGHLIGHTS

- All uses considered
- Prominent Branding Opportunity
- Legal Lower Level with Backyard
- Neighbors include:

Pura Vida, Starbucks, Chase Bank, Bank of America, Citi Bank, Duane Reade (Walgreens), CVS Pharmacy, The UPS Store, The Vitamin Shoppe, Whole Foods Market, Trader Joe's, Target, TJ Max

SIZE: 3,080 SF Ground + 2,856 SF Lower Level

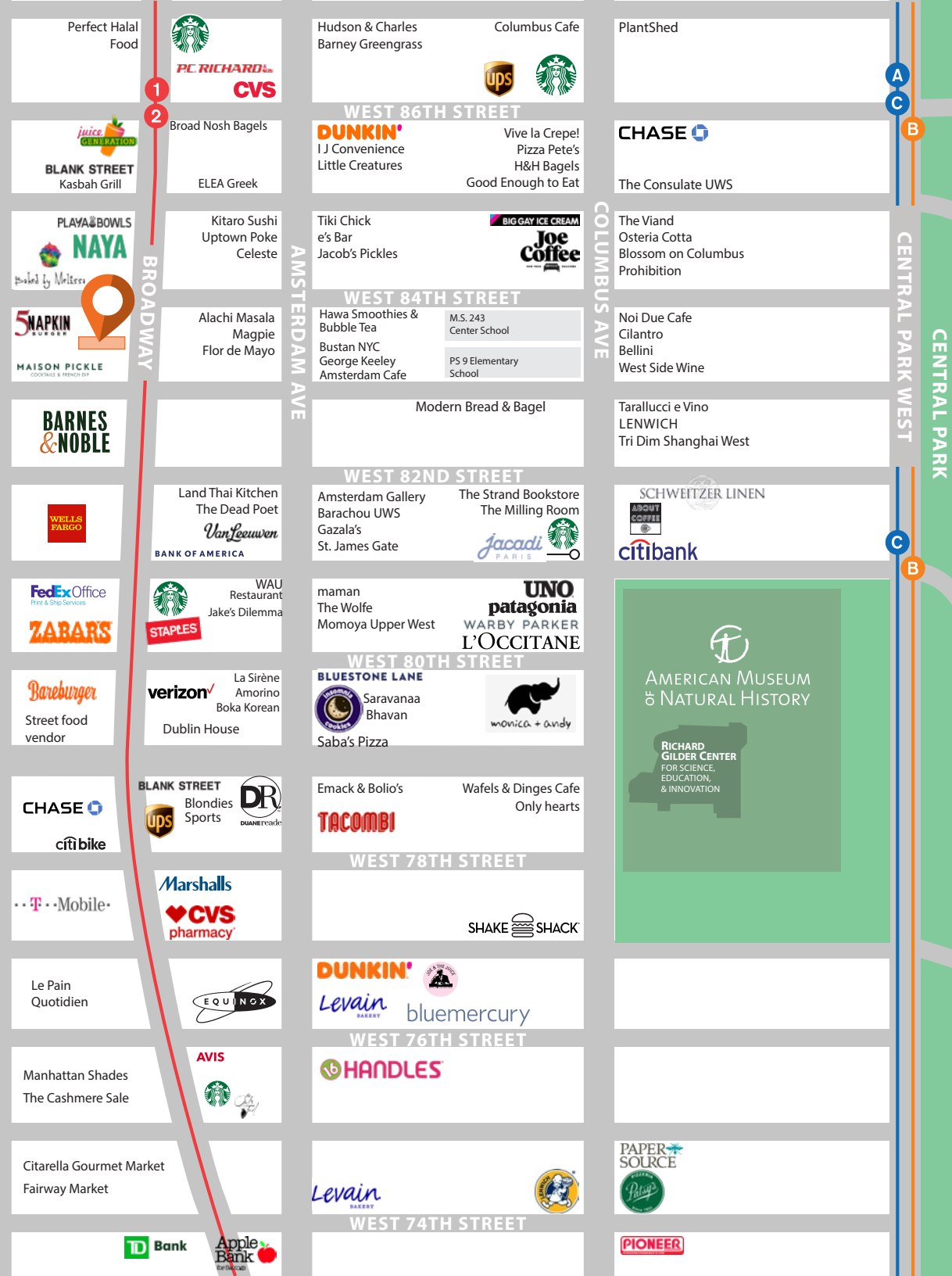
FRONTAGE: 27'

CEILING HEIGHT: Approx 15' Ground, 9'5" Lower

POSSESSION: Immediate

ASKING RENT: Upon Request

TRANSPORTATION: 1 2 and M104 Bus



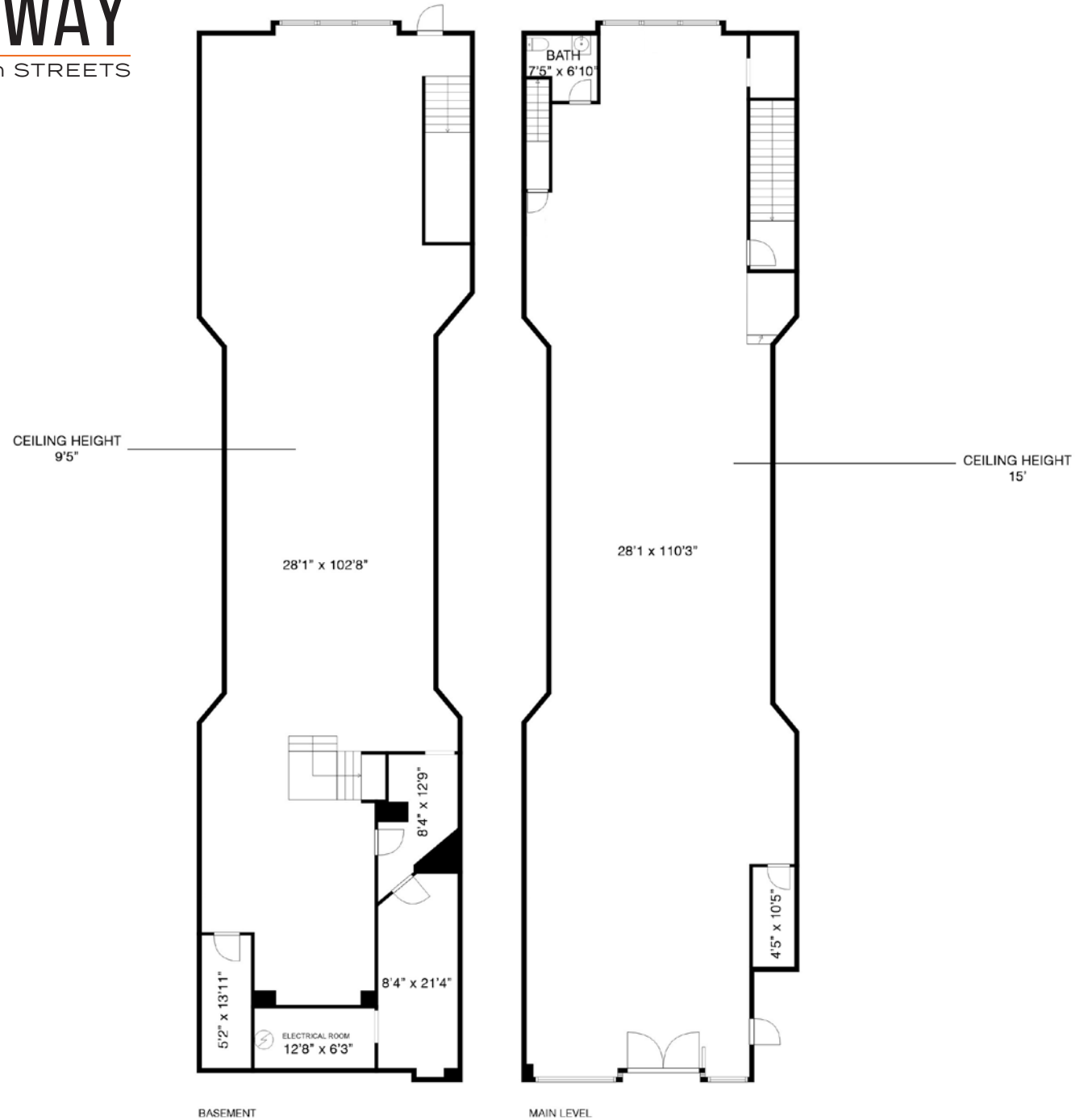
2307 BROADWAY

BETWEEN WEST 83rd AND WEST 84th STREETS

FLOOR PLAN:

GROSS INTERNAL AREA - 5,936 SF

- BASEMENT - 2,856 SF
- MAIN LEVEL - 3,080 SF



2307 BROADWAY

BETWEEN WEST 83rd AND WEST 84th STREETS

FOR MORE INFORMATION,
PLEASE CONTACT:

SAM SABIN

917.846.5367 | SSabin@ksrny.com

SAM CHERA

718.614.1731 | SChera@ksrny.com

ALBERT MANOPLA

212.380.8369 | AManopla@ksrny.com

