

1551 East Willow Street

Kankakee, IL 60901



269,488 SF AVAILABLE

SUBLEASE POSSIBLE THROUGH 1/31/2027
FLEXIBLE TERM



PROPERTY SPECIFICATIONS



269,488 SF

AVAILABLE SPACE

25

EXTERIOR DOCKS

WET SPRINKLER

SYSTEM

**NORFOLK SOUTHERN RAIL
SPUR - RAIL DOOR ACCESS**

RAIL SERVICE

8,020 SF (2 STORIES)

OFFICE SF

1

DRIVE IN DOORS

40' x 56'

COLUMN SPACING

\$4.25 GROSS

ASKING RATE

25'-28'

CLEAR HEIGHT

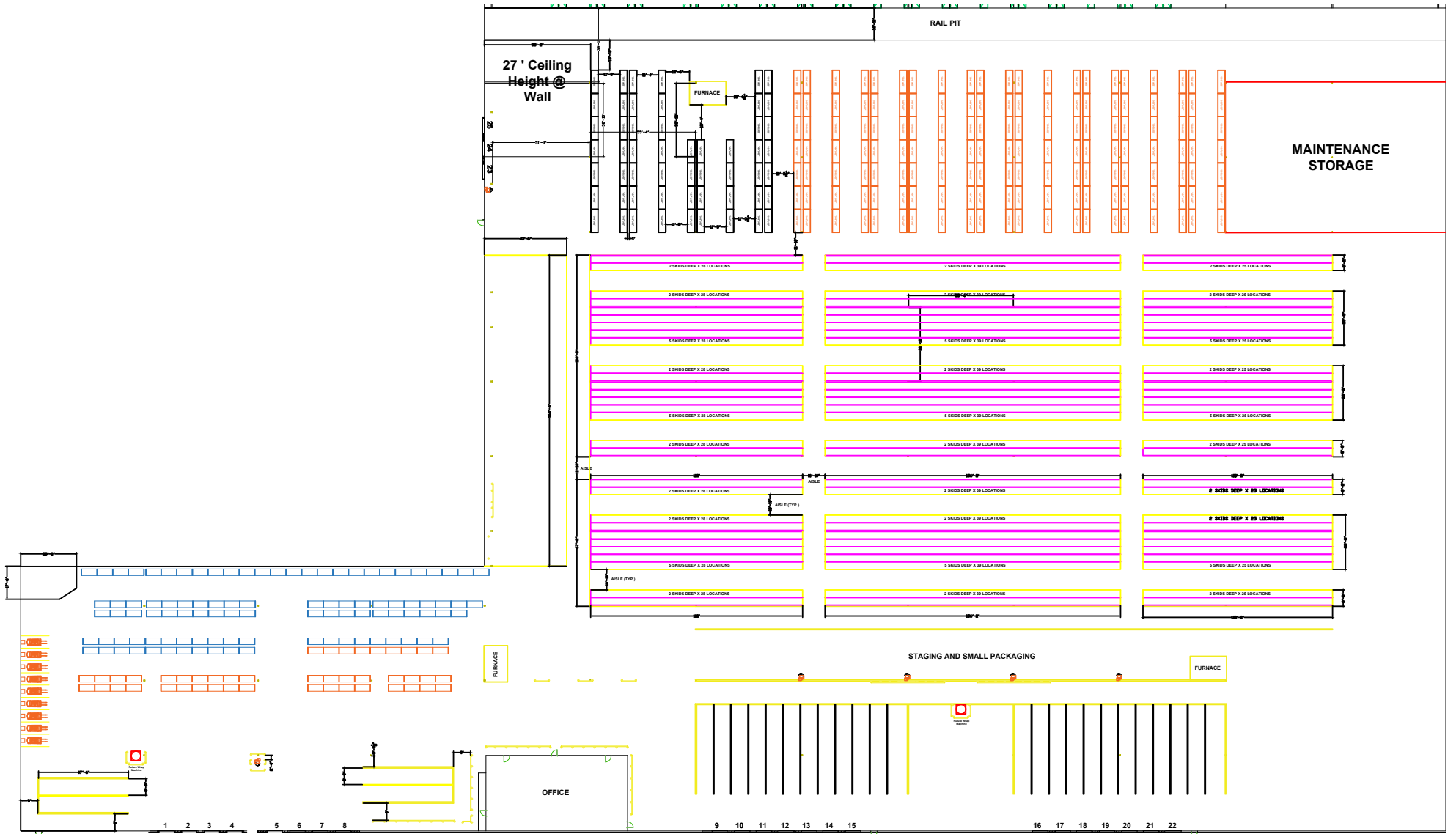
±70

TRAILER STALLS

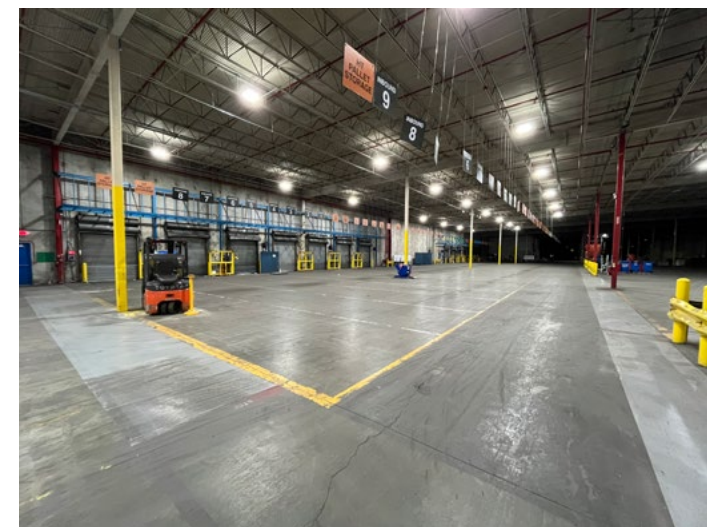
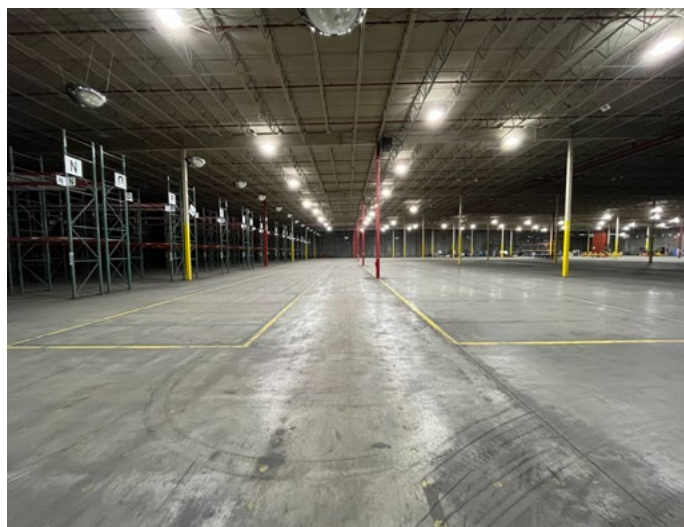
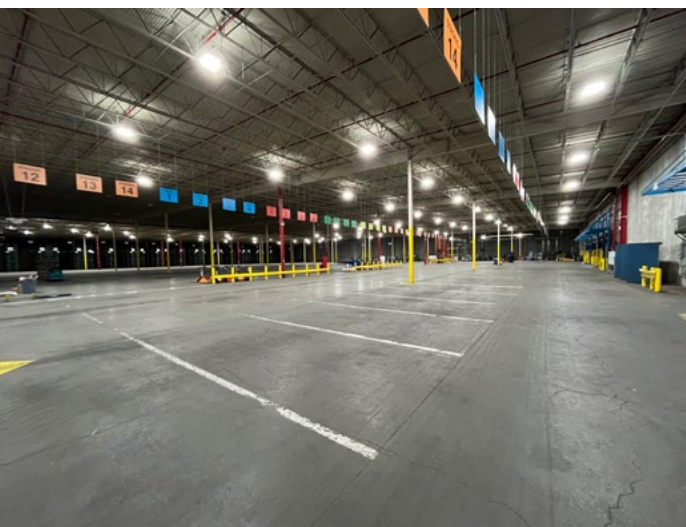
3,000 AMPS / 480 VOLTS

POWER

PROPERTY FLOOR PLAN



PROPERTY PHOTOGRAPHY



PROPERTY AERIAL MAP

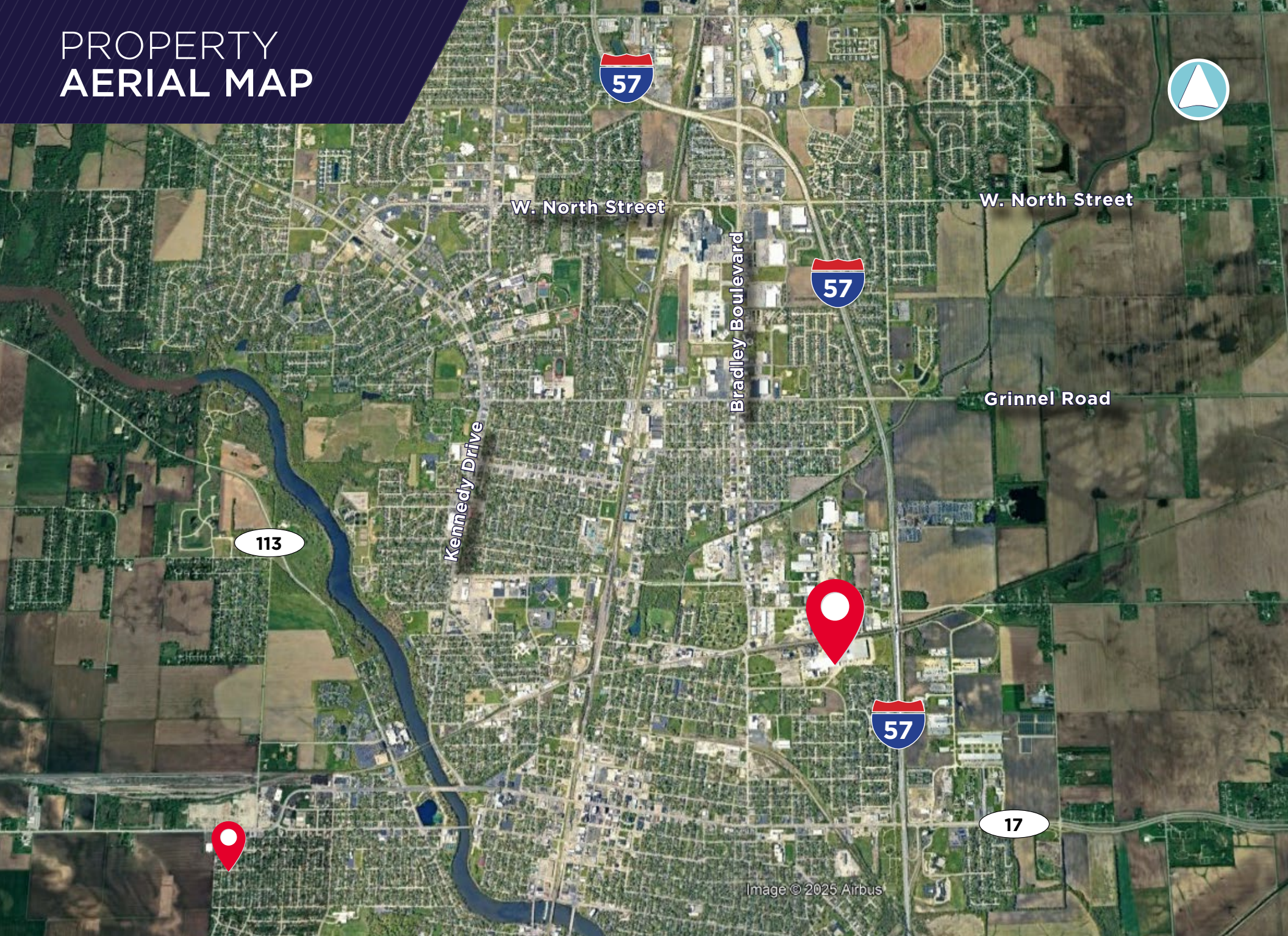
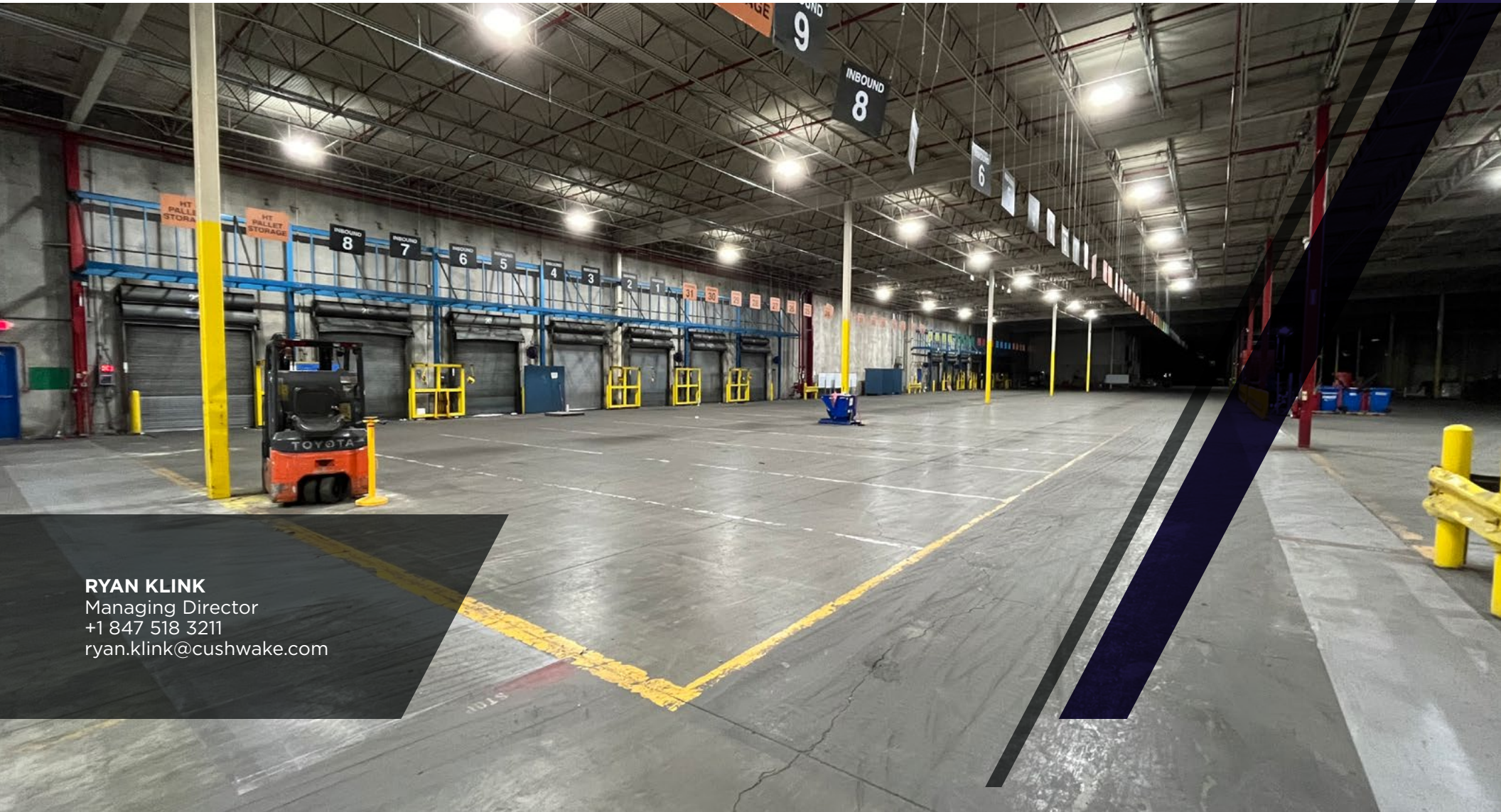


Image © 2025 Airbus

1551 E. Willow Street, Kankakee, IL 60901



RYAN KLINK
Managing Director
+1 847 518 3211
ryan.klink@cushwake.com