



OFFICE SPACE FOR LEASE

361 SOUTHPORT CIRCLE

VIRGINIA BEACH, VA 23452



361 SOUTHPORT CIRCLE

VIRGINIA BEACH, VA 23452

PROPERTY OVERVIEW



OFFERING SUMMARY

Available SF: 2,027 -7,048 SF

Lease Rate: \$21.00 SF/yr (Net of Janitorial)

AVAILABLE SPACES

SF

2nd Floor 2,027 - 7,048 SF
(Subdivisible)

PROPERTY OVERVIEW

Located in the Central Business District of Virginia Beach. Easy access to the Virginia Beach/Norfolk Expressway (I-264), and in close proximity to The Town Center of Virginia Beach.

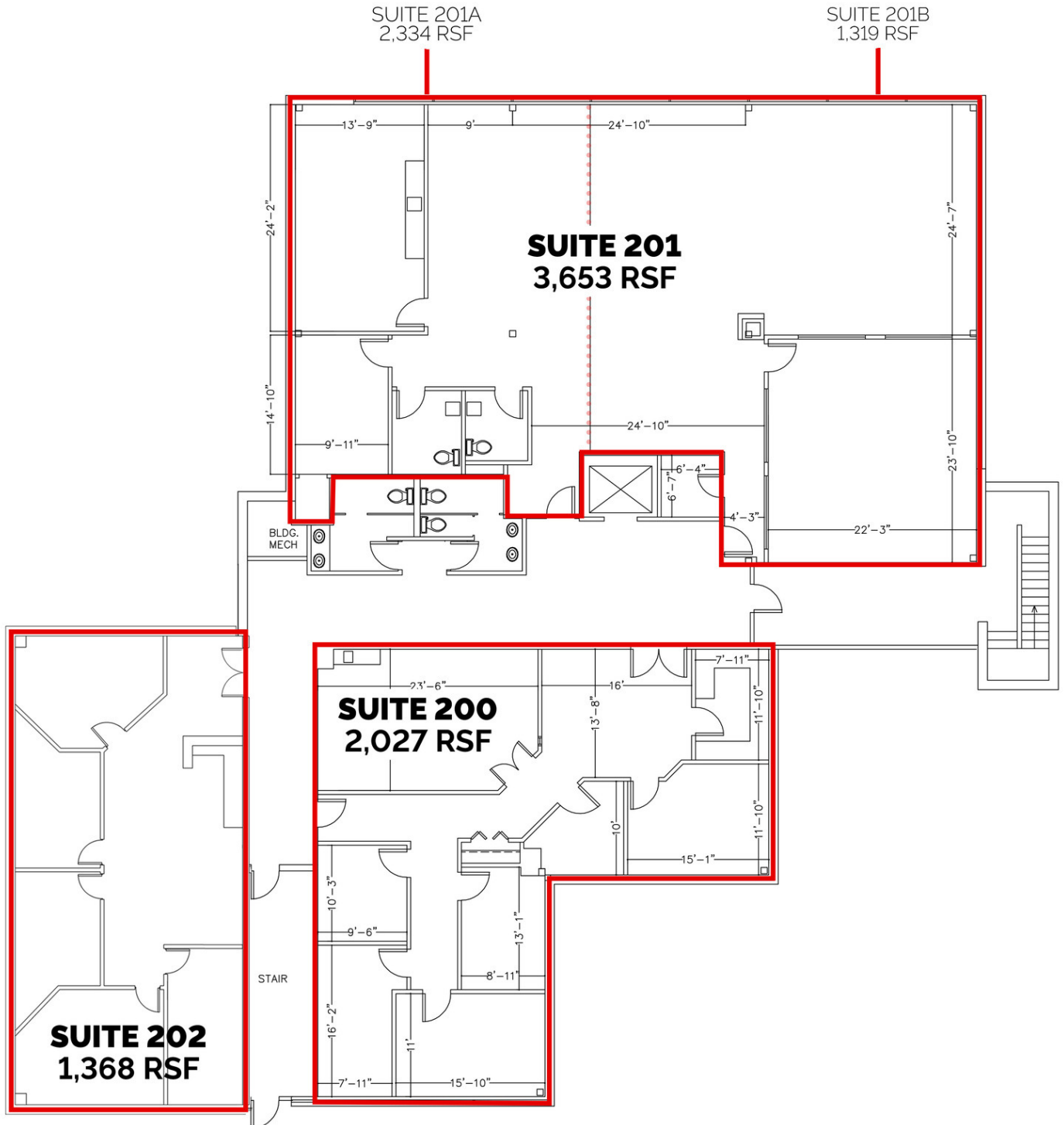
PROPERTY HIGHLIGHTS

- Building Signage available
- Free and ample surface parking
- Common Area Restrooms
- Ideal for Medical Tenants
- Park-like setting
- Nearby shopping, restaurants & hotels
- Close proximity to the Town Center of Virginia Beach

361 SOUTHPORT CIRCLE

VIRGINIA BEACH, VA 23452

SECOND FLOOR | 2,027 - 7,048 SF

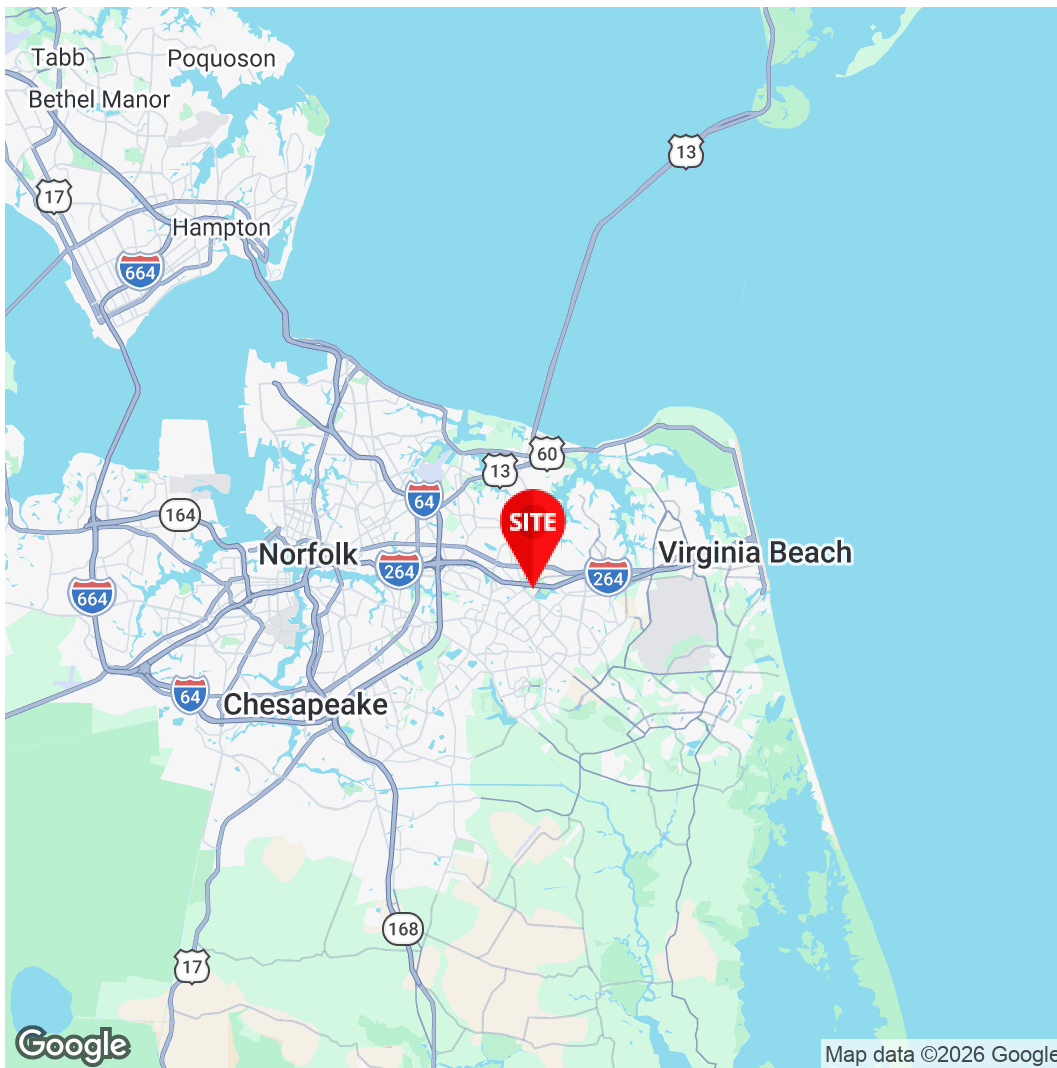


361 SOUTHPORT CIRCLE

VIRGINIA BEACH, VA 23452

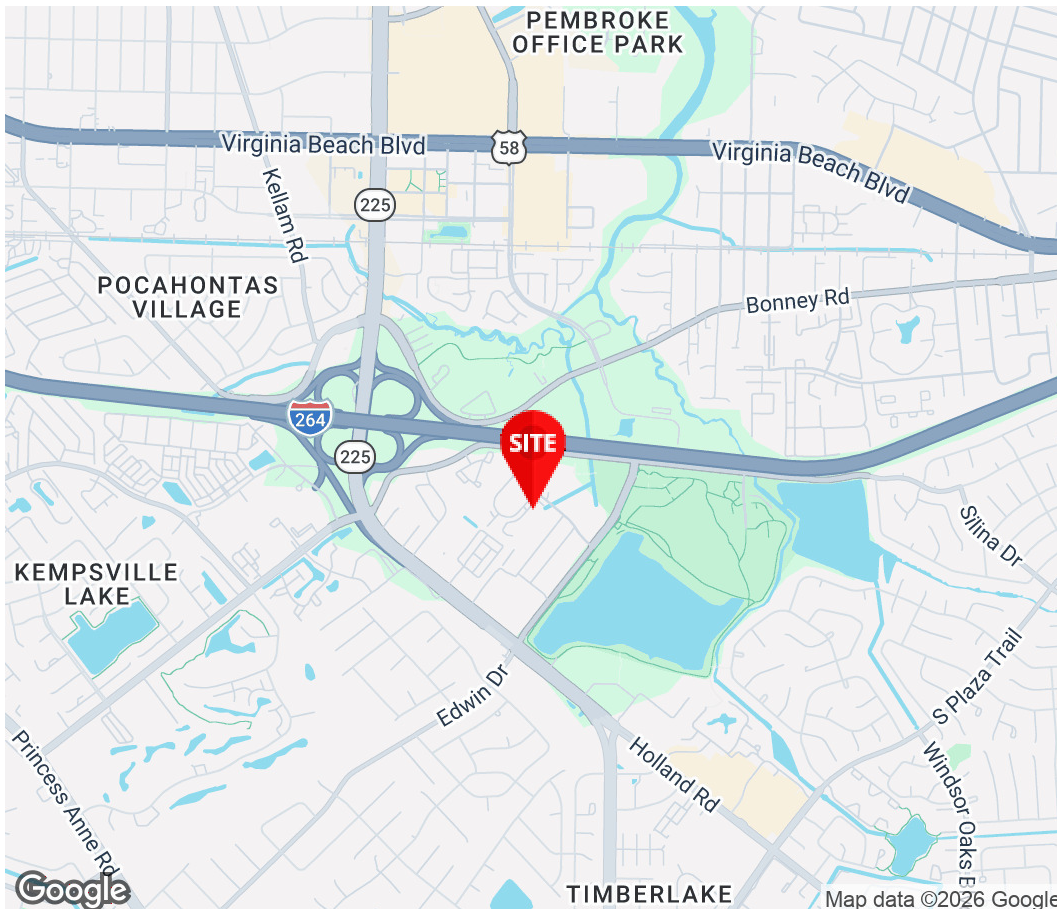
ADDITIONAL PHOTOS | SUITE 201





Elizabeth C. Paasch
 AVP, Office Leasing And
 Sales
 757.333.4322
 Epaasch@Divaris.Com

Ashley Beck
 Senior Associate
 757.333.4302
 Ashley.Beck@Divaris.Com



The information contained herein should be considered confidential and remains the sole property of Divaris Real Estate, Inc. at all times. Although every effort has been made to ensure accuracy, no liability will be accepted for any errors or omissions. Disclosure of any information contained herein is prohibited except with the express written permission of Divaris Real Estate, Inc.