



17813 Edison

Chesterfield | 63005



FOR LEASE

2,221 SF

4,764 SF

\$15/SF MG

OFFICE

- Second floor office suites
- Elevator served
- Accessible entry
- Common ADA bathrooms
- Abundant parking
- Excellent highway access
- Close to retail, restaurants, and services in the high-growth Chesterfield Valley
- Separately metered utilities
- Private offices and full suites available with flexible terms



JUSTIN STRÖHM, BROKER

(314) 814-6178

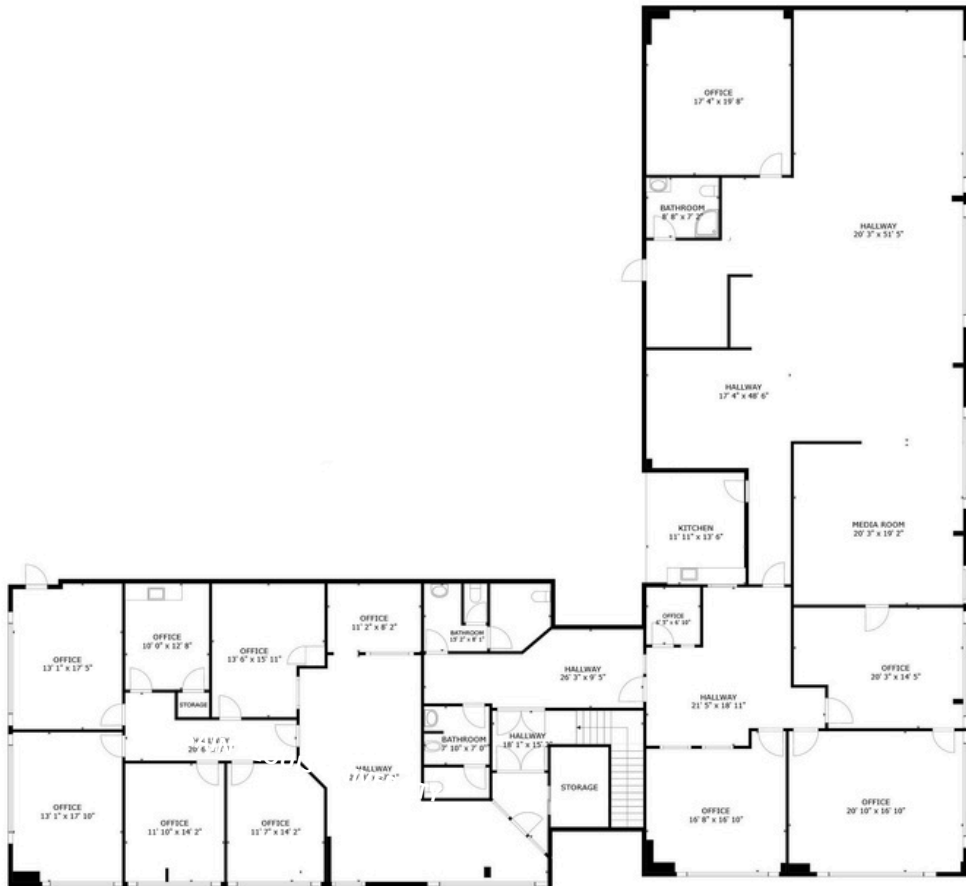
Justin.Strohm@CircaSTL.com

CIRCA PROPERTIES

(314) 352-5200

3353 ROGER PLACE ST. LOUIS, 63116

WWW.CIRCASTL.COM



No expressed or implied warranty or representation is made as to the accuracy of the information contained herein. This property is submitted subject to errors, omissions, change of price, withdrawal without notice, prior lease or sale and any other listing conditions imposed by the principals.