

830 N. Columbia Center Boulevard



830 N. Columbia Center Blvd Kennewick, WA 99336

- SUITES: H, F1, F2
- AVAILABLE NOW
- RSF: 6,896 +/-
- RATE: \$19 SF/YR
- TERM/LEASE: 3-5 YR
- Modified Gross



Plaza West is in the prime location of the Central Business District near retail, hotels, services, and restaurants. The building has exceptional visibility with being on the signalized corner of Columbia Center Blvd & Grandridge. Ample parking is available, along with prominent monument and building signage.

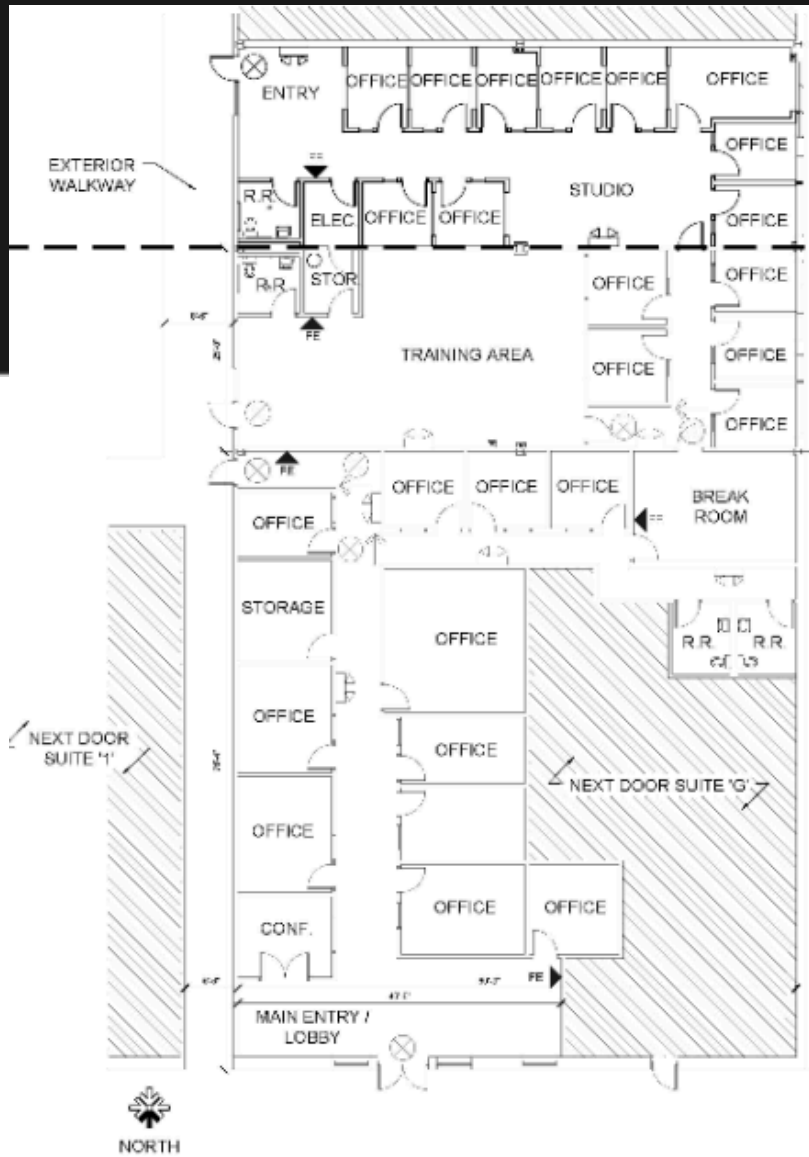
Recently remodeled in 2019, this professional office space boasts a contemporary design with an array of features. Suites H, F1, and F2 are fully equipped with amenities including a welcoming reception and waiting area, spacious kitchen with a stovetop and oven, open work areas, private offices, and conference rooms. Space can be leased as-is, or there are flexible options for dividing as needed! Please see the attached floorplan for clarification.



HARLEY HUSTON
COMMERCIAL BROKER
509-619-7347 MOBILE
509-735-0161 COMMERCIAL LEASING
HHUSTON@CROWNPROPERTYMANAGEMENT.COM

OLIVIA KELLY
COMMERCIAL BROKERAGE ASSISTANT
509-957-2900 MOBILE
509-735-0161 COMMERCIAL LEASING
OKELLY@CROWNPROPERTYMANAGEMENT.COM

FOR LEASE: Suites H, F1, F2 830 N. Columbia Center Blvd. Kennewick, WA 99336



Please note: Plan is intended to provide a representation for layout. Actual dimensions may vary as this document is not 100% to scale.

Disclaimer: The material contained herein is furnished solely for the purpose of considering the Leasing of the Property. Neither Crown Property Management nor the Owner make any representation or warranty, express or implied as to the accuracy or completeness of the information contained herein. The information contained herein is subject to change without notice and the recipient of these materials are advised and encouraged to conduct their own comprehensive review and analysis of the Property. The Owner expressly reserves the right, at it's sole discretion, to reject any or all expressions of interest to Lease the Property and to terminate negotiations with any entity, for any reason, at any time with or without notice.



CROWN PROPERTY MANAGEMENT
552 N. COLORADO ST. STE. 101
KENNEWICK, WA 99336
509-619-7347 OFFICE
CROWNCOMMERCIALREALESTATE.COM

HARLEY HUSTON
COMMERCIAL BROKER
509-619-7347 MOBILE
509-735-0161 COMMERCIAL LEASING
HHUSTON@CROWNPROPERTYMANAGEMENT.COM