

CREATIVE • OFFICE • SPACE

RADWORKS » FULL SERVICE OFFICES » RIVER ARTS DISTRICT

20 ARTFUL WAY • ASHEVILLE • NC

RADVIEW

LIVE. WORK. CREATE. PLAY.

In the Heart of the River Arts District

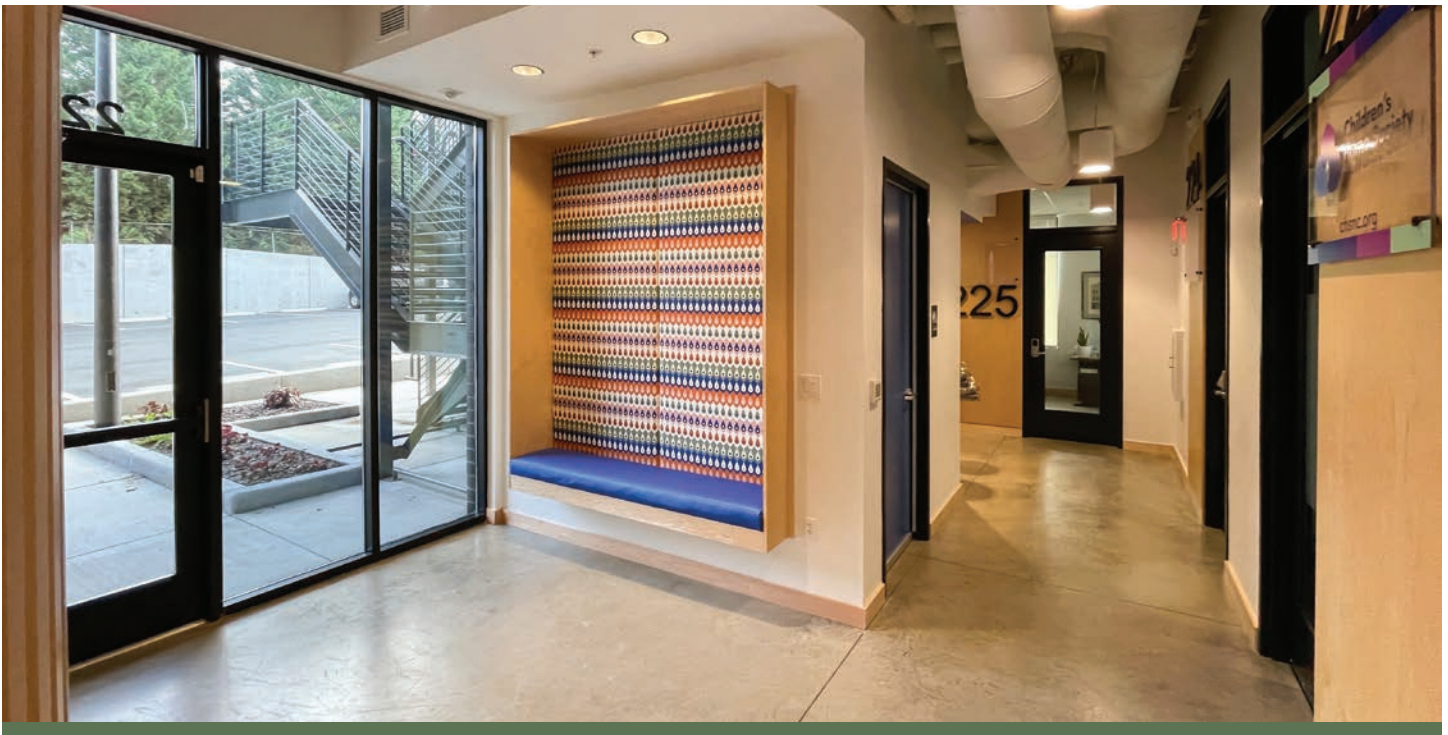
SEE INSIDE FOR MORE INFORMATION!



20 ARTFUL WAY ASHEVILLE, NC

LIVE. WORK. CREATE. PLAY.

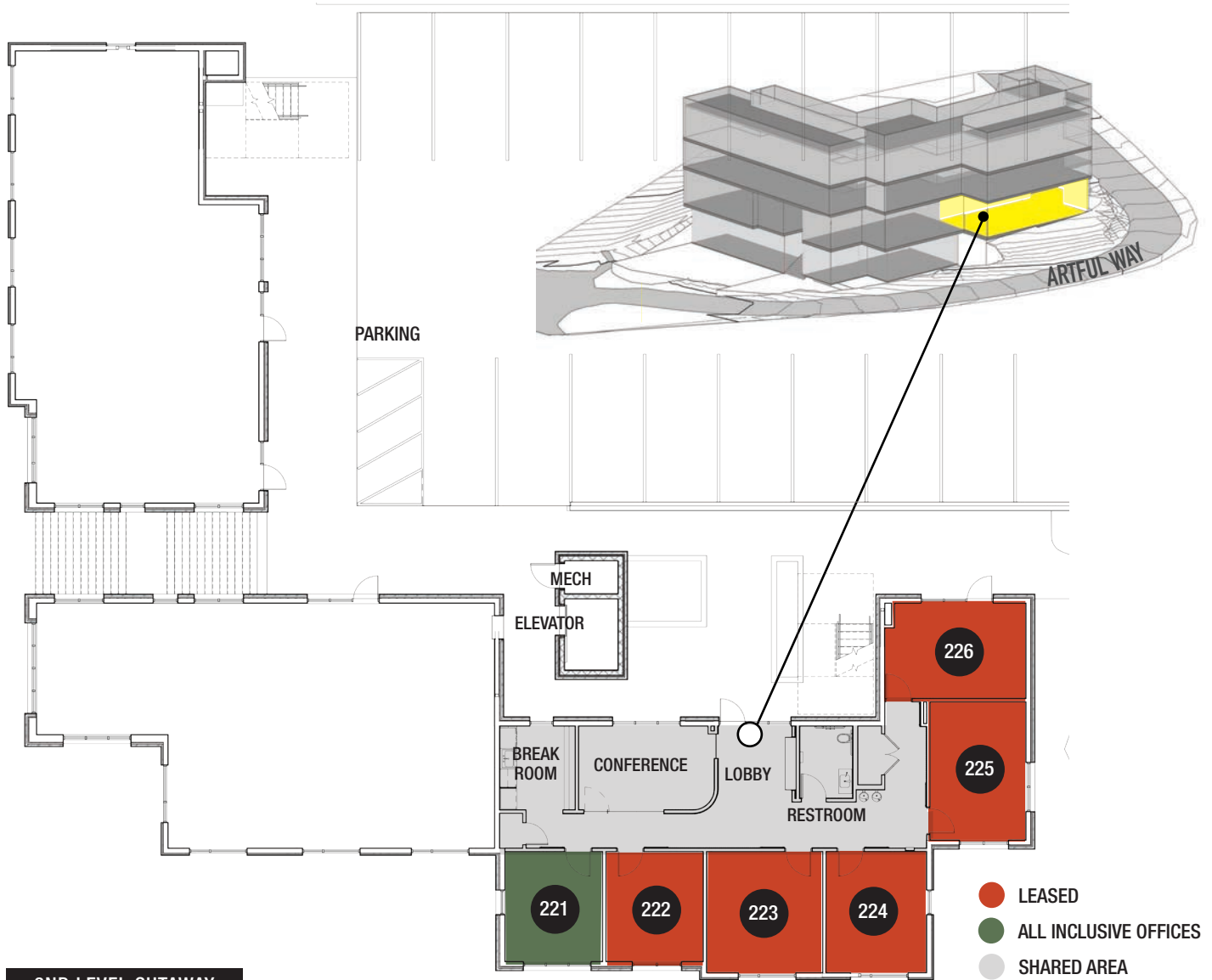
Radview is a dynamic place for people to fully inhabit the River Arts District. Twenty-six studio apartments with southwestern views are perched on the 3rd and 4th floors. The 2nd floor offers an eclectic mix of creative office space while street level storefronts deliver much needed studio, gallery and retail space. Developed, designed, built and owned by locals for locals. Activating the building 24/7 infuses a robust, innovative energy of people living, working, creating and playing within the River Arts District.



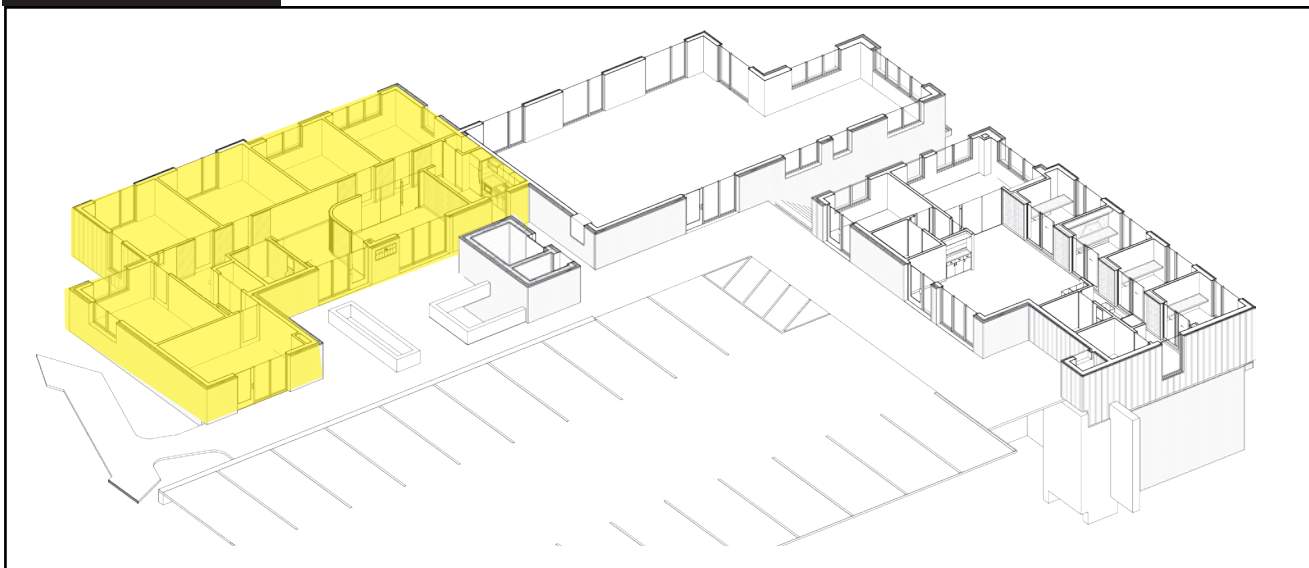


LEVEL TWO

FULL SERVICE » RADworks



2ND LEVEL CUTAWAY



LEVEL TWO

FULL SERVICE » RADworks

LOCATION	SQFT	DIMENSIONS (+/-)	EXPOSURE	FEATURES	MO RENT
#221	164	13'5" X 12'3"	SW CORNER	MORE WINDOWS	\$1,495
#222	164	13'5" X 12'3"	SOUTH	MOST AFFORDABLE	
#223	215	14'9" X 14'7"	SOUTH	LARGEST OFFICE	
#224	181	14'9" X 12'3"	SE CORNER	MORE WINDOWS	
#225	206	17'2" X 12'0"	SE CORNER	MORE WINDOWS	
#226	200	11'8" X 17'2"	NE CORNER	EXTERIOR ENTRANCE	

» Fully finished all-inclusive offices in the heart of the River Arts District with on-site parking.

» Perfect for organizations or individuals seeking a prominent foothold in Asheville's vibrant arts and riverfront community.

» State of the art offices and amenities provide much needed creative space for Asheville's local, homegrown businesses.

» Rent is "Full Service" and includes all Sundries and Supplies.

» CANVAS

- New Steel & Concrete Construction
- Delivered Fully Finished
- Polished Concrete Floors & Carpeting
- Acoustically Insulated Walls & Ceilings
- Recessed, Pendant & Suspended LED Lighting
- Custom Wood Wall Panels & Slats
- 10-Foot Finished & 14-Foot Exposed Structure Ceilings
- Fully Sprinklered

» SUNDRIES

- High Speed Internet
- Electric/Water/Sewer
- Common Area Maintenance
- Real Estate Taxes
- Insurance
- Weekly Janitorial
- Property Video Surveillance
- On Site Parking

» COMPOSITION

- Signage Opportunity
- Individually-Zoned HVAC In Offices
- Built-In Exterior Mailboxes
- Keypad Entry Access
- Security System
- WiFi Access Points
- Above Ceiling Window Shade Pockets
- Live/Work Opportunity (Apartments Above)

» SUPPLIES

- Fully Furnished Conference Room
- Wall Mounted Flat Screen Display
- Break Room with Counter Seating
- Quartz Countertops
- Refrigerator
- Microwave
- Built-In Custom Lobby Seating
- ADA Restroom & Drinking Fountain

LEVEL TWO: #221

FULL SERVICE » RADworks



» COMMUNITY » RIVER ARTS DISTRICT

AS A BUSTLING ARTIST ENCLAVE DRAPED ALONG THE FRENCH BROAD RIVER, Asheville's River Arts District (known locally as the "RAD") pulses with an artistic energy born of diverse media, lively interchange and countless handmade projects in motion on any given day. Asheville's former industrial and warehouse section just southwest of downtown is the up-and-coming art-and-crafts center of the region, with many studios and galleries, plus cafés, breweries, and nightclubs. As industrial companies moved out, artists moved in, seeking cheaper rents for studios and loft apartments.

RIVER ARTS DISTRICT
ARTISTS

**Support the RAD today:
Visit and Donate!**

Legend

- Parking
- Open Business & Studios
- Saturday Art Market
- Food, Beer, or Coffee

MAP NOT TO SCALE

Businesses:

- Hatchery Studios
- The Radical
- Phil Mechanic Studios
- All Souls Pizza
- Wedge Studios
- Saturday Art Market
- Grey Eagle Taqueria
- 20 Artful Way
- Anoche
- WAREHOUSE STUDIOS
- Wedge Brewery
- Roberts St Studios
- The Wyre Shops
- Odyssey Gallery of Ceramic Arts + Studios
- Rite of Passage Sew + Co.
- Ultra Coffeebar
- Dead End
- Olde London Road English Pub
- Fresh West Pizza
- Pink Dog Creative
- Zen Ink
- The Lift Studios
- NorthLight Studios
- Aura Arts Studios
- Penny Cup Coffee
- 362 Depot St
- ButterPunk

Streets: ROBERTS STREET, HAYWOOD ROAD, WEDGE BROAD RIVER, PAINES WAY, LYMAN STREET, CLINGMAN AVENUE, DEPTOT STREET, BARTLETT STREET



All information is from sources deemed reliable. No warranty nor representation is made as to the accuracy thereof and all information above is subject to errors, omissions or change without notice.



Jeremy Goldstein
jgold@gmproperty.com



John Menkes
jmenk@gmproperty.com

Please contact Jeremy Goldstein or John Menkes at G/M Property Group, LLC

G/M PROPERTY GROUP, LLC
20 Artful Way
Asheville, NC 28801
(828) 281-4024 (Main)



G/M PROPERTY GROUP, LLC

YOUR COMMERCIAL
REAL ESTATE EXPERTS

WWW.GMPROPERTY.COM