

Buckhead's Healthcare Hub

371 East Paces is a boutique-style medical and office building designed to reflect the energy and affluence of Buckhead. With seven floors of medical office space over two levels of retail and lobby areas, the building offers a sophisticated location for physicians in one of Atlanta's most dynamic neighborhoods.

Space for Lease
371 East Paces Ferry Rd
Atlanta, GA 30305



Total SF
111,060 SF



Available SF
2,392 - 4,476 SF



Property Highlights



Prominent Luxury District

Located in the heart of Buckhead, this building is surrounded by fine dining, upscale shopping, and high-end amenities that enhance the experience for both patients and providers.



Elevated Design

With highly efficient floor plans, onsite retail, and a contemporary design that balances function with comfort, this property delivers modern infrastructure in a high-demand submarket.



Hassle-Free Parking

This location features a 4.31/1,000 parking ratio with direct garage access to the first five floors, supporting seamless arrival and navigation for patients and staff.



Optimal Accessibility

Four elevators, including one dedicated service elevator, support efficient vertical movement throughout the building, creating a highly accessible space for patients and staff members.



Strategic Connectivity

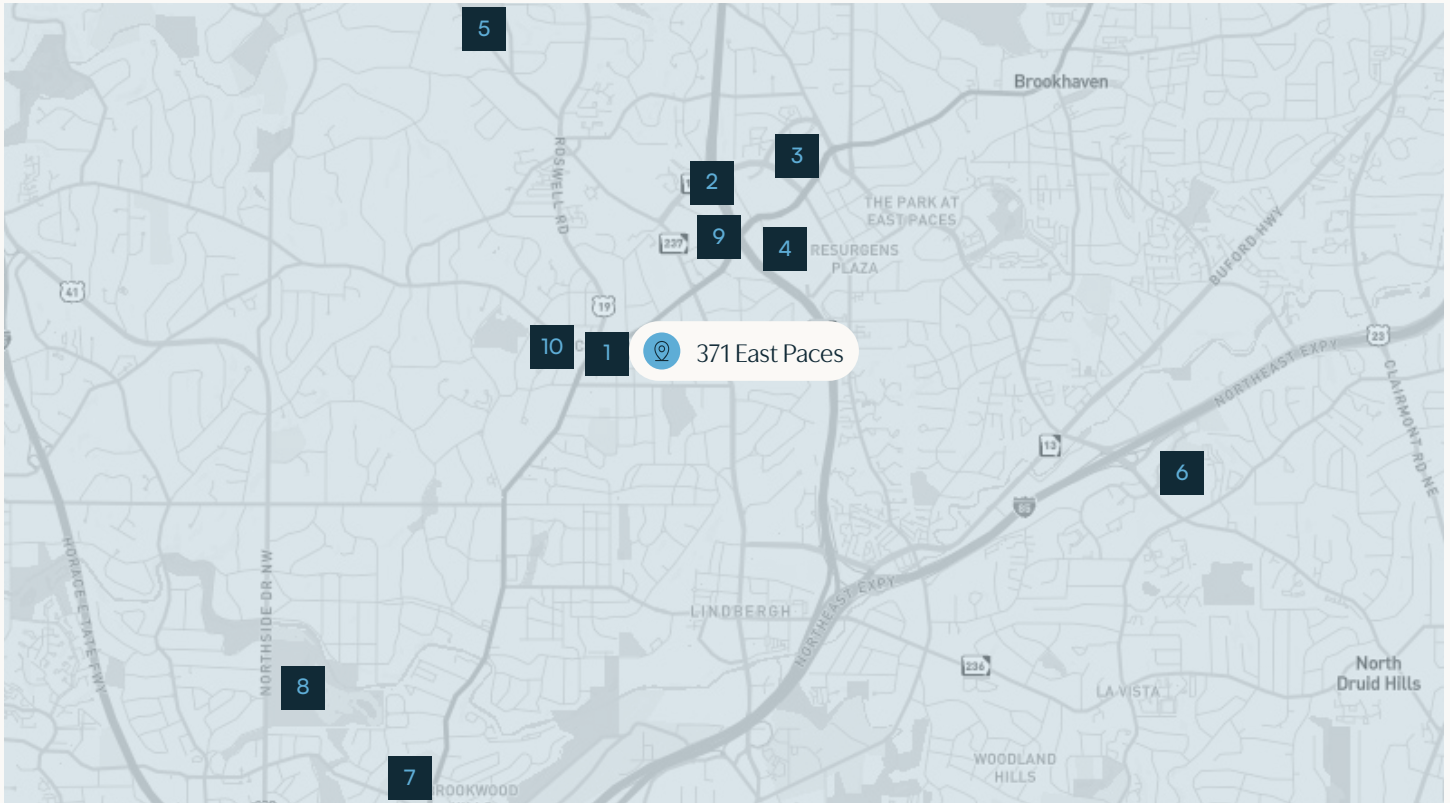
This facility is situated in the Buckhead Village District with quick access to GA-400, connecting physicians to high-income, growing patient networks across Buckhead and Metro Atlanta.



Referral Opportunities

With a diverse range of specialties located throughout the seven floors of medical space, strong built-in referral networks support ongoing practice growth and patient retention.

Points of Interest



1 Buckhead Village District
📍 0 miles

2 GA-400
📍 1 mile

3 Phipps Plaza
📍 2 miles

4 Lenox Mall
📍 2 miles

5 Chastain Park
📍 3 miles

6 Arthur M. Blank CHOA
📍 4 miles

7 Piedmont Atlanta Hospital
📍 3 miles

8 Bobby Jones Golf Course
📍 4 miles

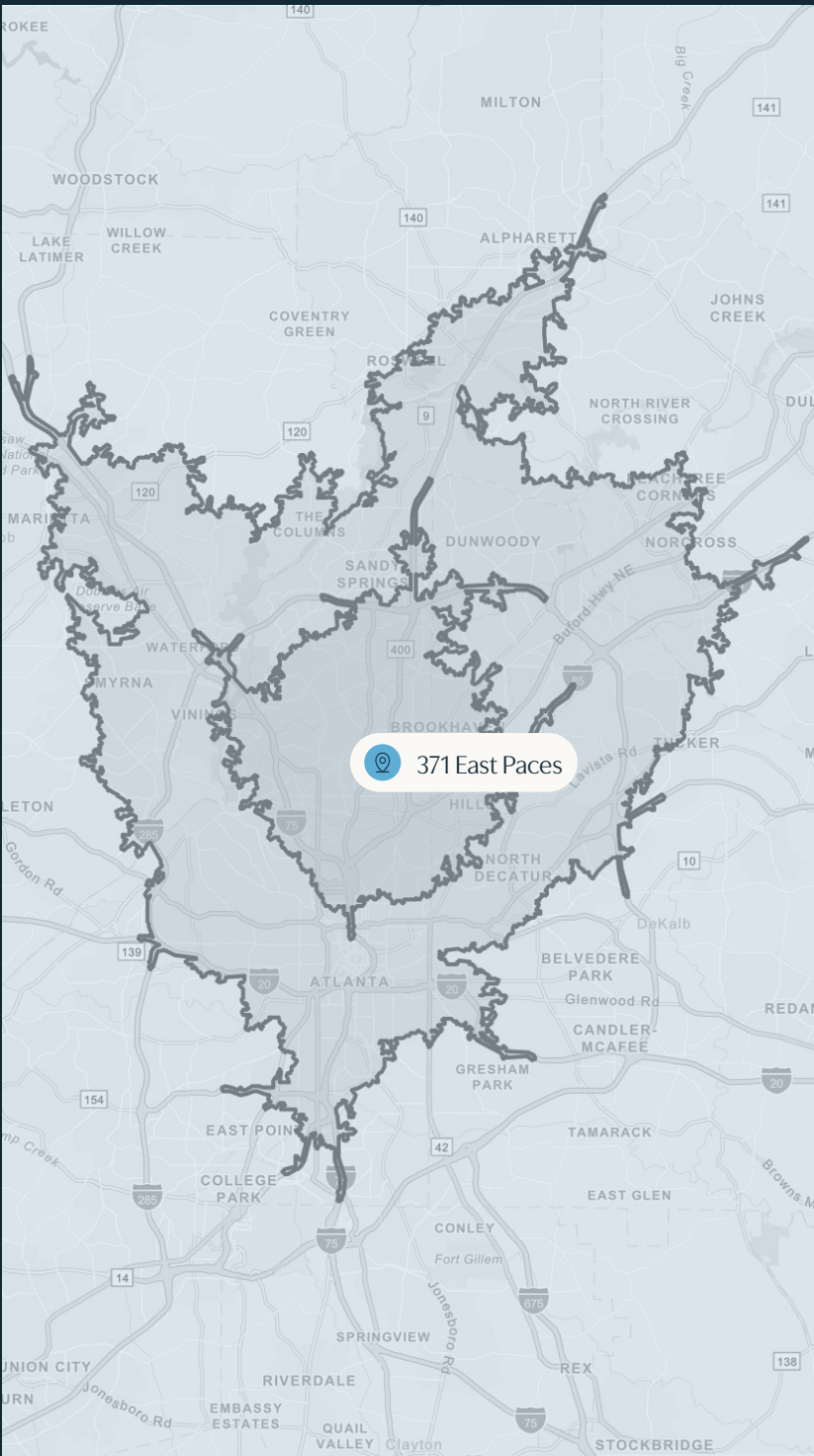
9 Buckhead Marta Station
📍 1 mile

10 St. Regis Atlanta
📍 1 mile





Additional notable locations

- Buckhead Theatre
- Bagley Park
- Atlanta History Center
- LEGO Discovery Center
- Whole Foods Market
- Trader Joe's
- Northside Beltline
- CVS Pharmacy
- Walgreens Pharmacy
- Lindbergh Center Marta Station



Demographics

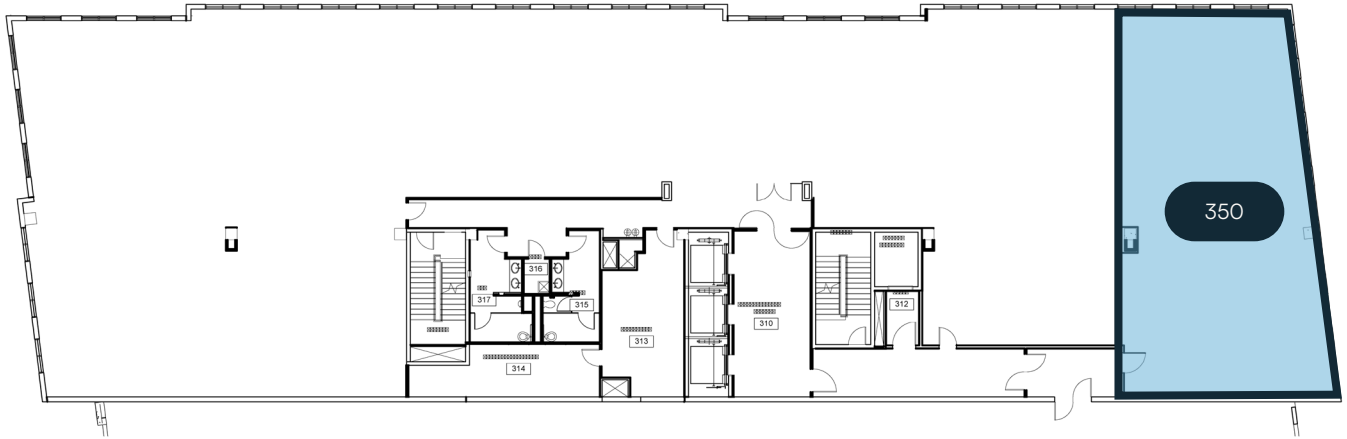


15 Minute Drive Time

-  Population
264,612
-  Median Income
\$118,085
-  Median Age
34.3 years old
-  CAGR
.76%

25 Minute Drive Time

-  Population
1,080,871
-  Median Income
\$100,066
-  Median Age
35.0 years old
-  CAGR
.92%



FLOOR PLAN

Floor Three

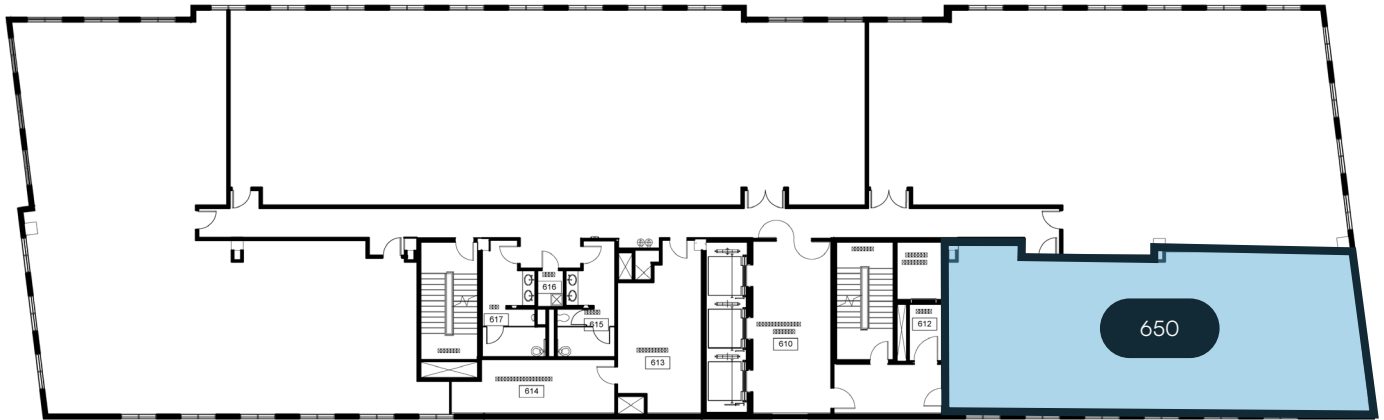
Suite 350



Size
2,815 RSF



Availability
Vacant



FLOOR PLAN

Floor Six

Suite 650



Size
2,392 RSF



Availability
Vacant

Exterior



Interior





Buckhead's Healthcare Hub

371 East Paces Ferry Rd
Atlanta, GA 30305

George Olmstead
Senior Vice President, Brokerage Services



Phone
(470) 740-2791



Email
george.olmstead@meadowsandohly.com