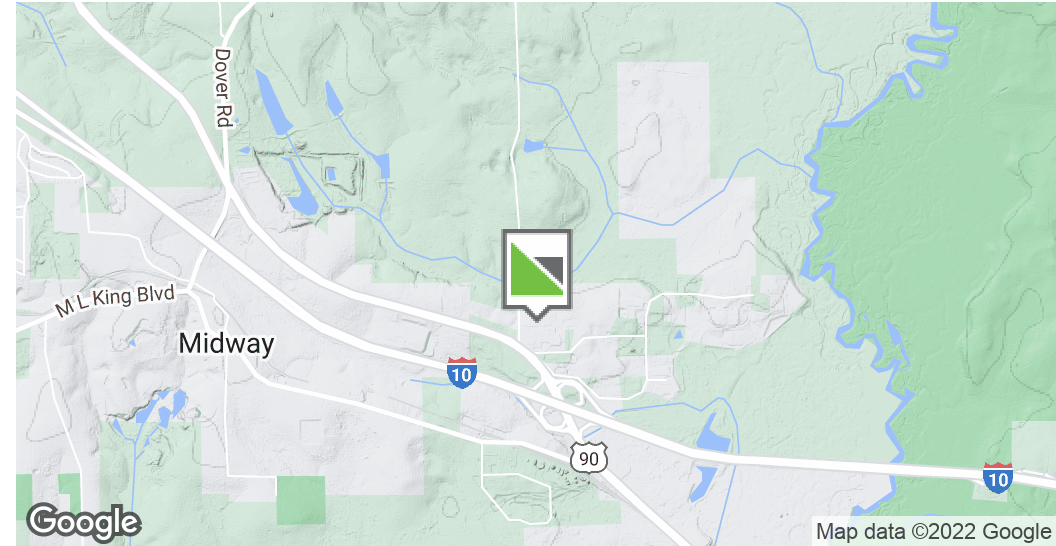


EXECUTIVE SUMMARY



OFFERING SUMMARY

Lease Rate:	Negotiable
Building Size:	10,000 SF
Available SF:	10,000 - 50,000 SF
Lot Size:	80 Acres
Zoning:	Industrial
Market:	Tallahassee

PROPERTY OVERVIEW

Midway Industrial Park is a new 80 acre Industrial development located 12 miles west of downtown Tallahassee FL. This site is located at Exit 192 on Interstate 10 and is adjacent to 10/ 90 Commerce Park. Build to suit opportunities starting at 10,000sf (+/-). Site Plans, Topo and Demographics available upon request.

PROPERTY HIGHLIGHTS

- Build to Suit
- Located at Exit 192, Interstate 10
- 170 Miles to Port Of Jacksonville
- 230 Miles to Port Of Mobile

For More Information:

Chad Knaepple,
CCIM, SIOR
850.687.4075
chad@taylorallenllc.com

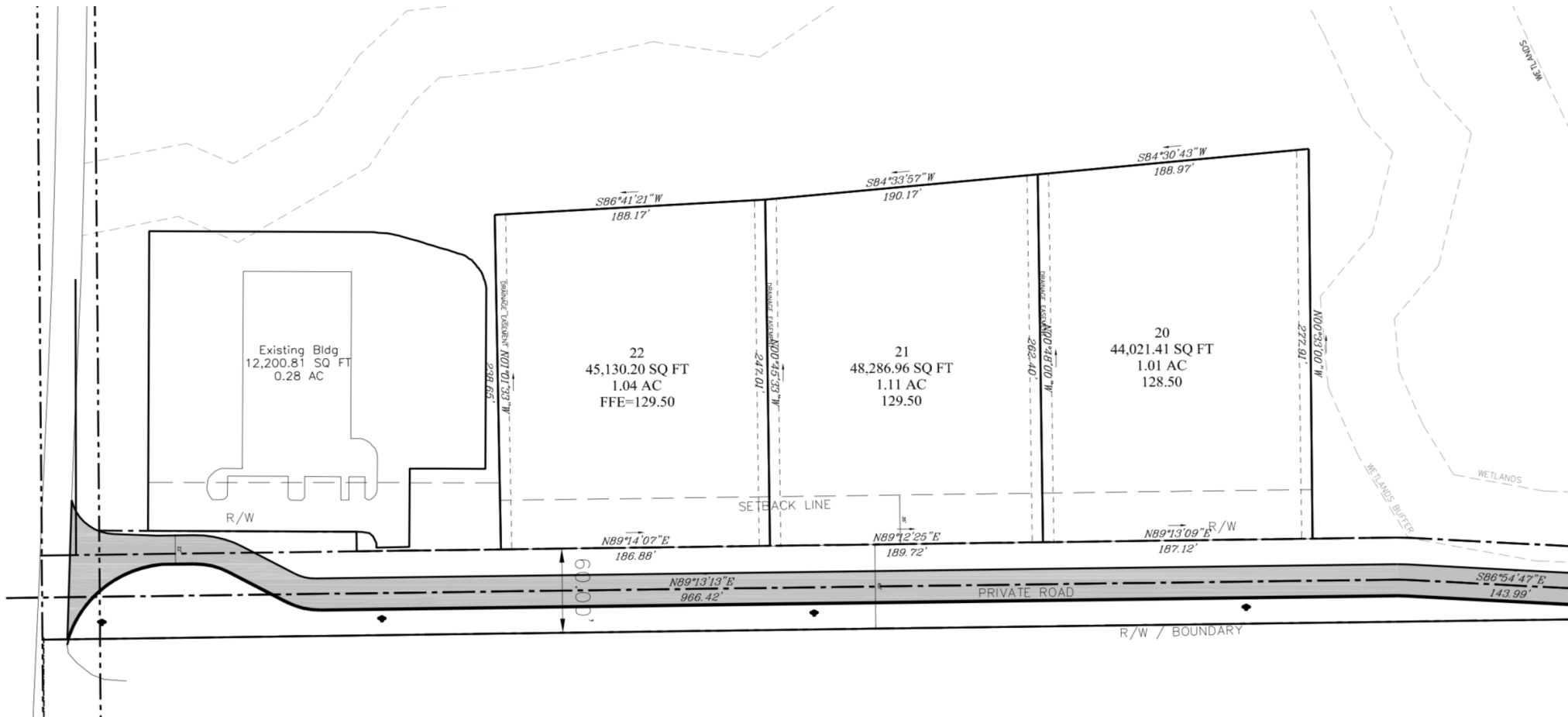
MIDWAY INDUSTRIAL PARK

156 Dupont Road, Havana, FL 32333

INDUSTRIAL PROPERTY FOR LEASE

PHASE ONE - 3.16 ACRES

TAYLORALLEN
PROPERTIES



For More Information:

Chad Knaepple,
CCIM, SIOR
850.687.4075
chad@taylorallenllc.com

MIDWAY INDUSTRIAL PARK

156 Dupont Road, Havana, FL 32333

INDUSTRIAL PROPERTY FOR LEASE

MASTER SITE PLAN

TAYLORALLEN
PROPERTIES



For More Information:

Chad Knaeple,
CCIM, SIOR
850.687.4075
chad@taylorallenllc.com

PAGE 3

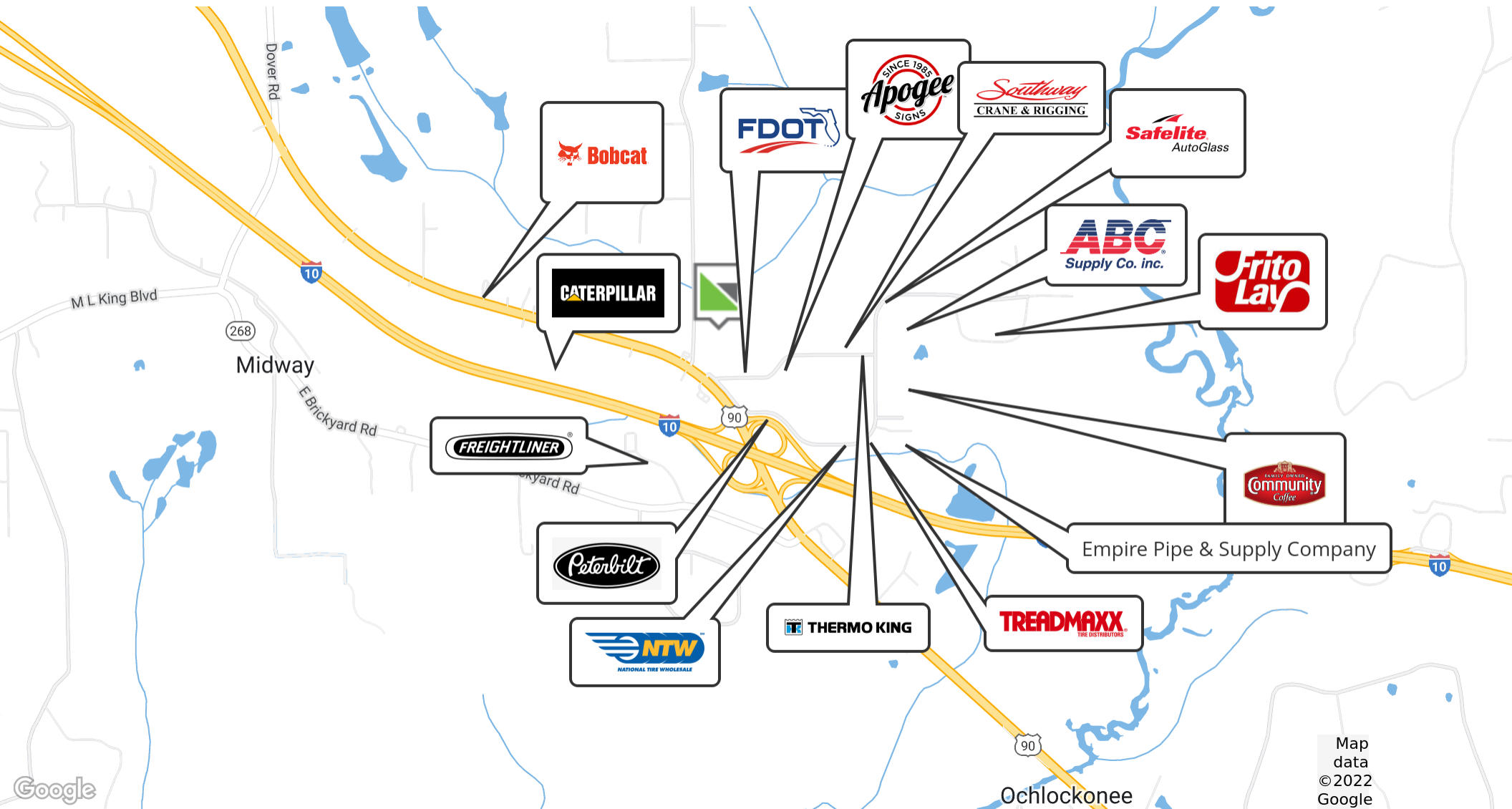
1219 Airport Road | Destin, FL 32541
taylorallenllc.com

MIDWAY INDUSTRIAL PARK

156 Dupont Road, Havana, FL 32333

INDUSTRIAL PROPERTY FOR LEASE

TAYLORALLEN
PROPERTIES



For More Information:

Chad Knaepple,
CCIM, SIOR
850.687.4075
chad@taylorallenllc.com

ADVISOR BIO & CONTACT 1

CHAD KNAEPPEL, CCIM, SIOR

Executive Director



1219 Airport Road , Suite 311
Destin, FL 32541
T 850.687.4075
chad@taylorallenllc.com
FL #SL3050854

PROFESSIONAL BACKGROUND

Chad Knaepple is the Co-founder/Executive Director of Taylor Allen Properties and specializes in the sale of Commercial Investment Property and the Leasing of Office and Industrial space. Chad is one of only two Brokers in Northwest Florida to achieve both the CCIM and the SIOR designations from the Society of Industrial and Office Realtors. These designations are reserved for highly-qualified real estate practitioners with a strong transactional history. Chad has been a Licensed Realtor in the State of Florida since 2002 and has solely focused on commercial sales and leasing over the last ten years. In 2019, Chad was able to sell or lease over 300,000 square feet of improved commercial property to include negotiating a 25,000 square foot, Class A office lease with Turnberry Associates in Destin, Florida. He also secured the re-tenant and sale of a 61,000 square foot business park in Panama City Beach, Florida, and the re-development of 32,000 square foot heavy industrial site in Freeport, Florida. Mr. Knaepple currently serves as a Board Member of Gulf Coast Commercial MLS (regional commercial MLS), Treasurer of the Airport Plaza Commercial Condominium and also volunteers his time professionally for Food for Thought Florida (501 c 3) advising on site selection, valuations, and negotiations for their current and past locations.

EDUCATION

Louisiana State University- School Of Architecture

MEMBERSHIPS & AFFILIATIONS

CCIM SIOR
Commercial Realtor of the Year 2015 , 2017 & 2021
Gulf Coast Commercial MLS- Board of Directors

For More Information:

Chad Knaepple,
CCIM, SIOR
850.687.4075
chad@taylorallenllc.com