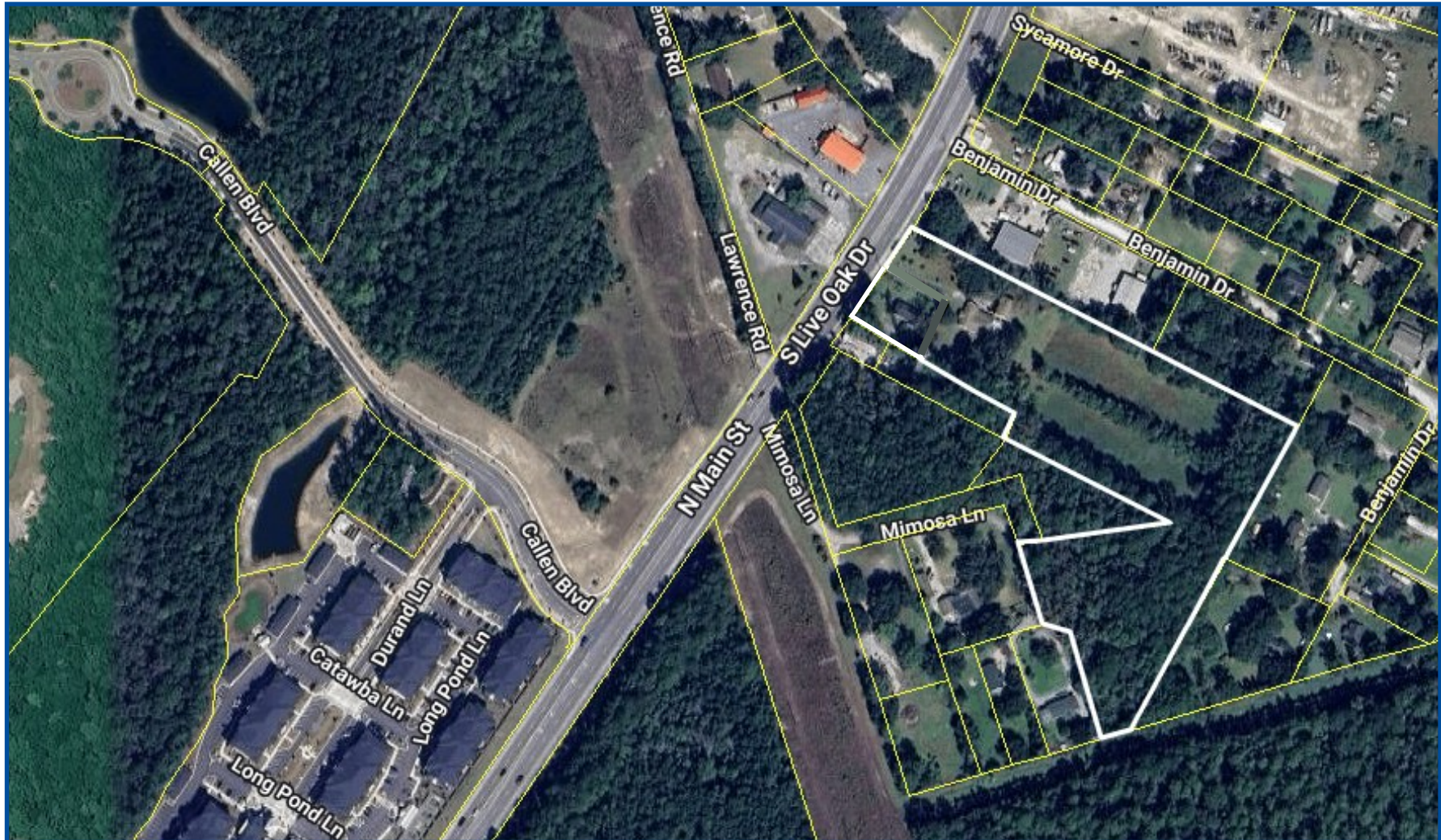


MIXED USE REDEVELOPMENT SITE

FOR SALE

APPROXIMATELY 7.66 ACRES

\$1,950,000



RE/MAX
COMMERCIAL®

RE/MAX Southern Shores
Robert Pratt
(843) 343-6085:cell
robert@robertpratt.com

3556 S. LIVE OAK DR.

| MONCKS CORNER |

SOUTH CAROLINA

3556 S. LIVE OAK DRIVE

\$1,950,000



Approx 7.66 Acres



209-00-02-011
209-00-02-012
Berkeley County



0.44 Acre Zoned GC
7.22 Acres Zoned R-2
Berkeley County



21,000 VPD
SCDOT

Fantastic development opportunity in one of the region's exploding growth corridors. Ideally located only 3/4 mile from Carnes Crossroads and 3 miles from Nexton & Cane Bay... Summerville's prime residential developments. Three schools within 1 mile: Northwood Academy, Palmetto Learning Academy & Carolyn Lewis School. This unique property offers approximately 0.44 acre zoned General Commercial and approximately 7.22 acres zoned R-2 in Berkeley County, providing for a mixed-use development opportunity.

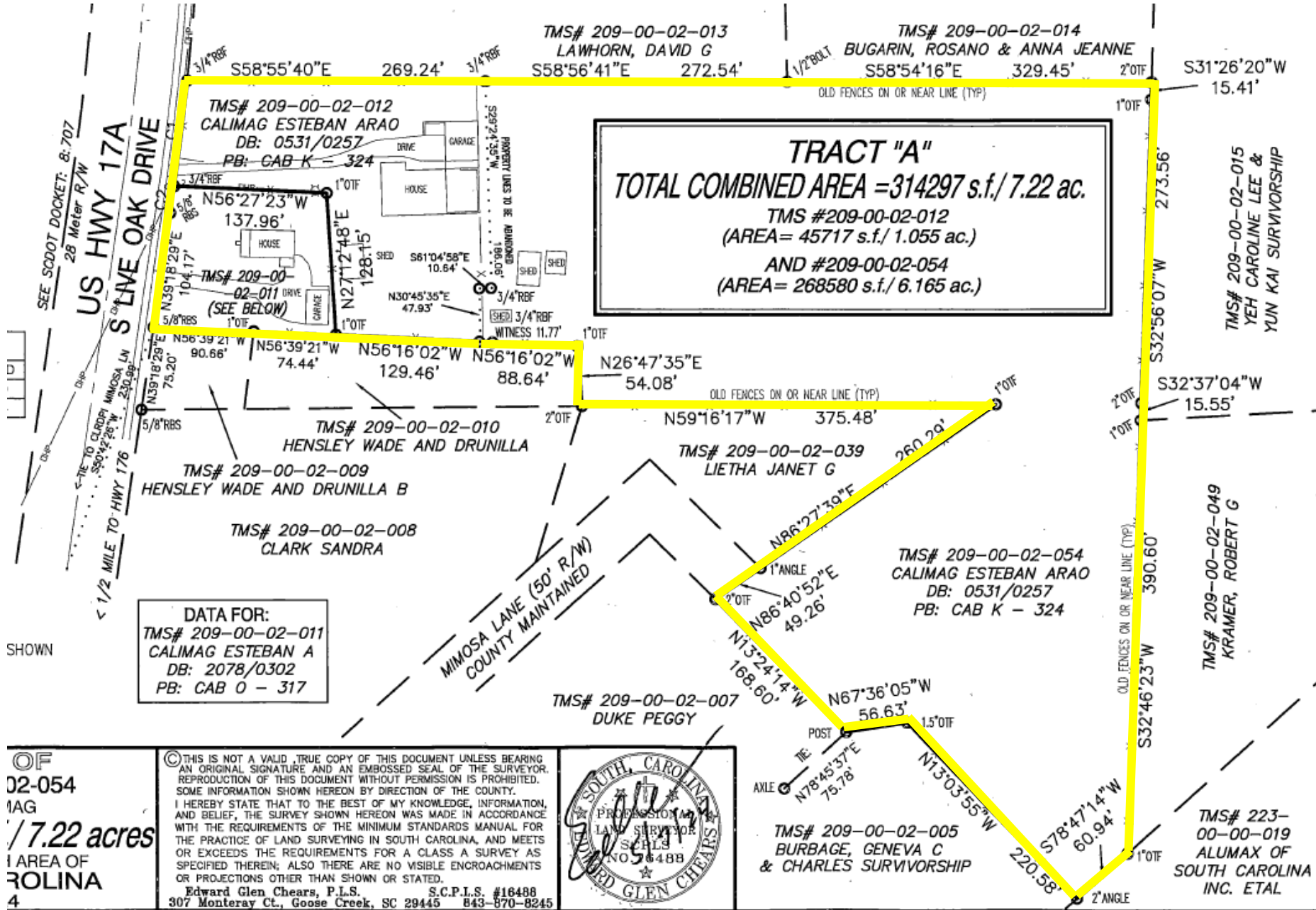
RE/MAX
COMMERCIAL®

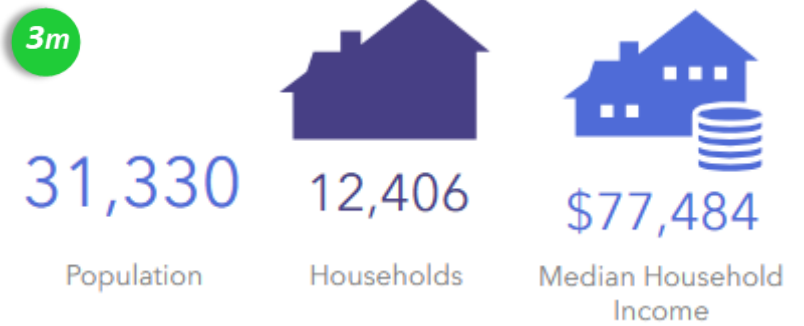
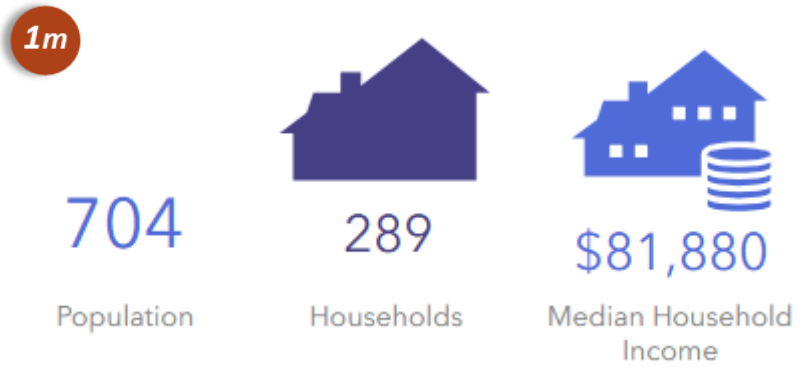
RE/MAX Southern Shores
Robert Pratt
(843) 343-6085:cell
robert@robertpratt.com

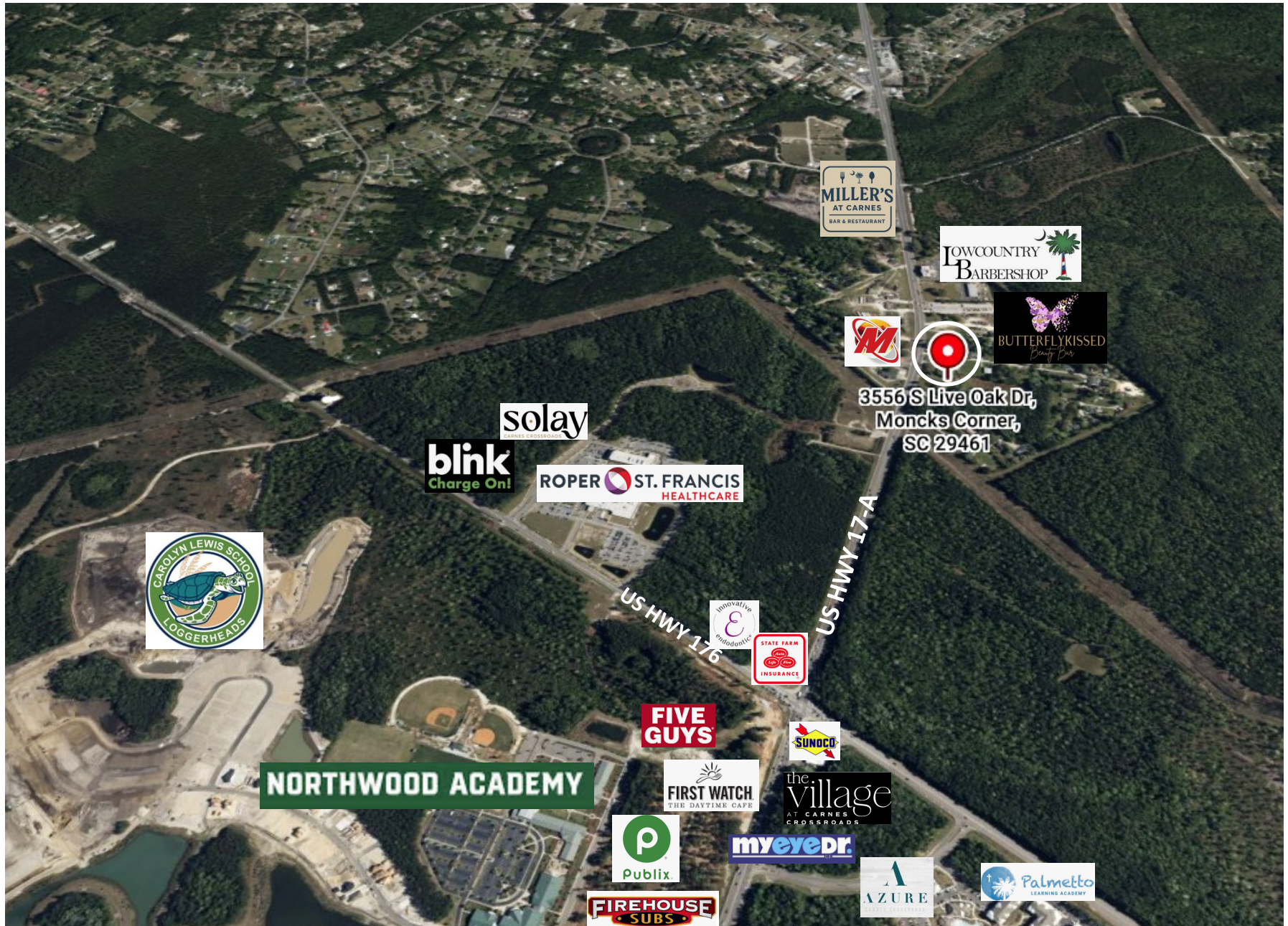
3556 S. LIVE OAK DR.

| MONCKS CORNER |

SOUTH CAROLINA







MILLER'S
AT CARNES
BAR & RESTAURANT

LOWCOUNTRY
BARBERSHOP

BUTTERFLYKISSED
Beauty Bar

W



3556 S Live Oak Dr,
Moncks Corner,
SC 29461

solay

blink
Charge On!

ROPER ST. FRANCIS
HEALTHCARE



US HWY 176

Innovative
Podiatry

STATE FARM
INSURANCE

US HWY 17-A

FIVE
GUYS

SUNOCO

NORTHWOOD ACADEMY

FIRST WATCH
THE DAYTIME CAFE

the village
AT CARNES
CROSSROADS

Publix

myeyedr.

FIREHOUSE
SUBS

AZURE

Palmetto
LEARNING ACADEMY